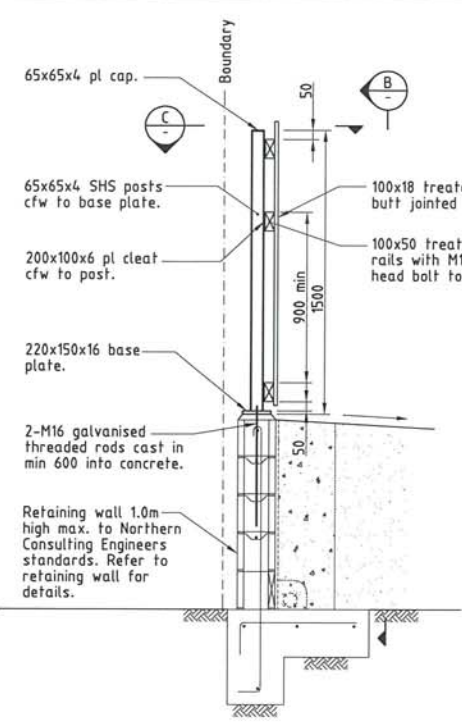
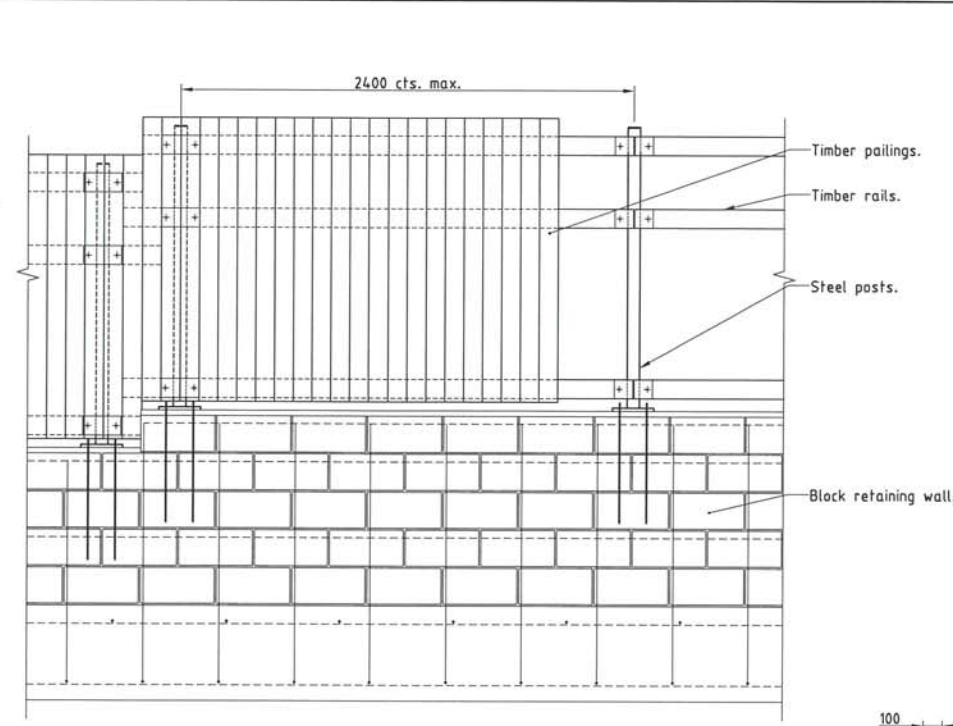


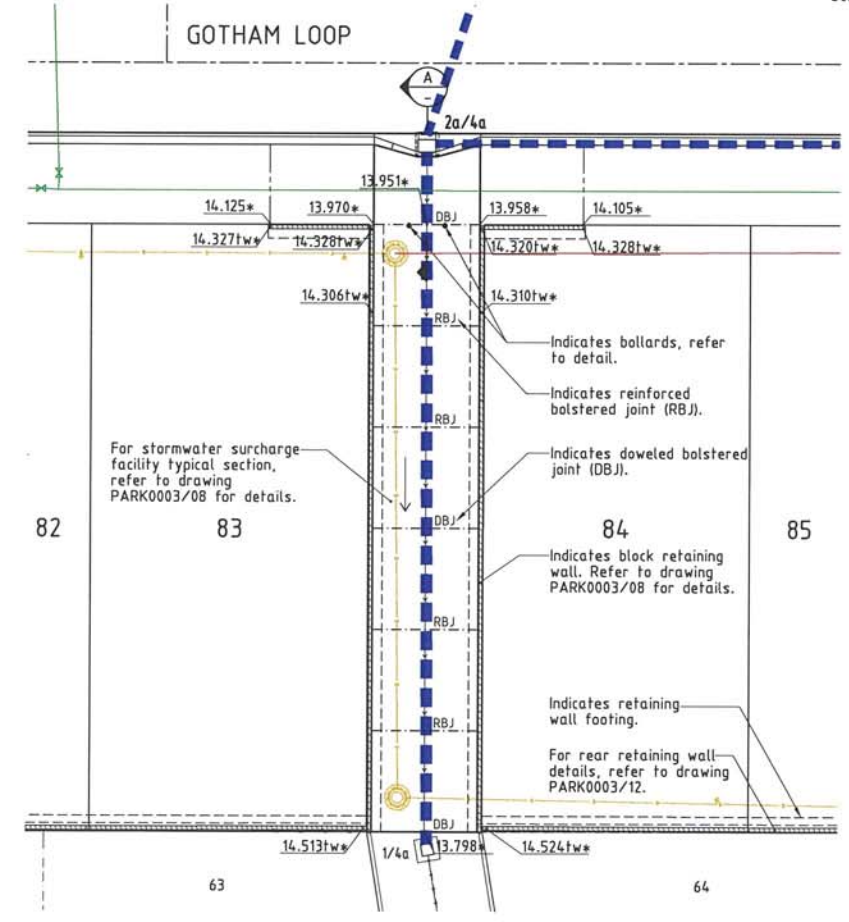
RETAINING WALL DETAIL
FOR RETAINING WALLS UP TO 1000 HIGH
Scale 'B'



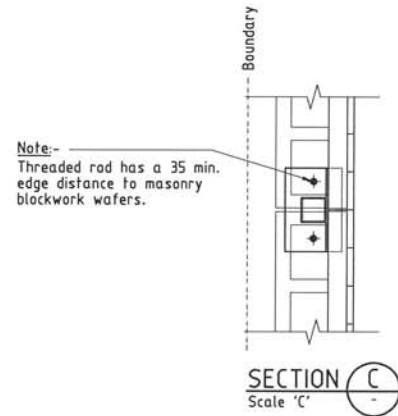
FENCE DETAIL
Scale 'B'



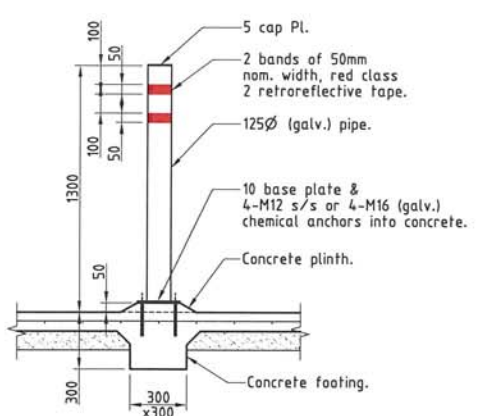
SECTION B
Scale 'B'



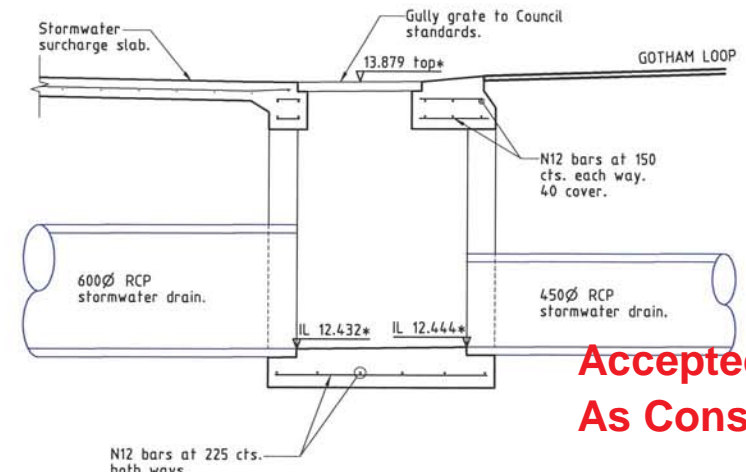
STORMWATER SURCHARGE FACILITY LAYOUT PLAN
Scale 'A'



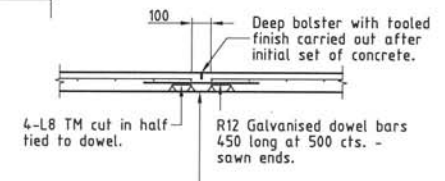
RETAINING WALL STEP DETAIL
Scale 'B'



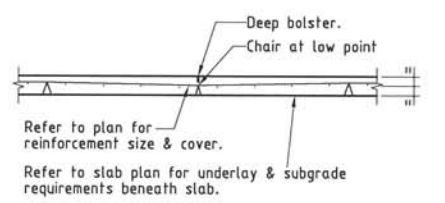
BOLLARD DETAIL
Scale 'B'



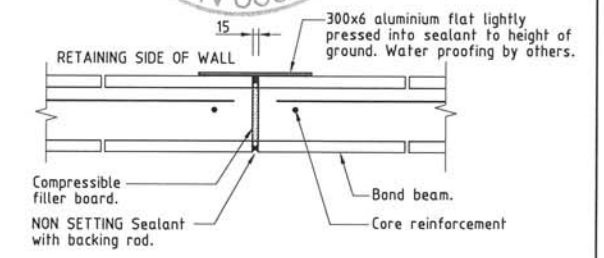
SECTION A
Scale 'B'



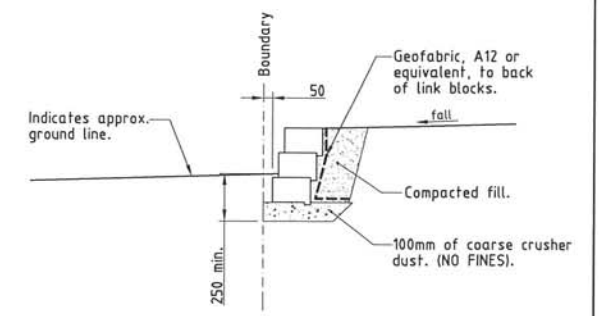
DOWELLED BOLSTERED JOINT (DBJ)
Scale 'B'



REINFORCED BOLSTERED JOINT (RBJ)
Scale 'B'



VERTICAL JOINT (VJ)
Not to Scale



LINK BLOCK RETAINING WALL
FOR RETAINING WALLS UP TO 600 HIGH
Scale 'B'

LEGEND

- 12.000* - As constructed surface level.
- 12.000** - As constructed top of wall level.
- - RP boundary.
- - - - - Invert of drain.
- - - - - Change of grade.
- - Stormwater drain line.
- - Subsoil drainage.
- - uPVC water main.
- - Sewer main.
- - Sewer manhole.

AS CONSTRUCTED
Northern Consulting Engineers hereby certify that the works detailed on this drawing have been constructed to the dimensions and levels detailed.
Derek Robert Conley Saw Date: 8-10-14

AS CONSTRUCTED
BRAZIER & MOTTI PTY LTD (ACN 066 411 041), 595 FLINDERS STREET, TOWNSVILLE HEREBY CERTIFY THAT THIS DRAWING ACCURATELY AND CORRECTLY DESCRIBES AND RECORDS THE NATURE AND THE LOCATION OF THE WORKS DEPICTED BY ASTERISKS (*) HEREON AS THEY HAVE BEEN CONSTRUCTED FOR SUBDIVISION.
REGISTERED SURVEYOR AND DIRECTOR
DATED THIS DAY 9/10/14
ACN 066 411 041

Accepted As Constructed

REAL PROPERTY DESCRIPTION

Lot 2 on SP 232875
Parish of BOHLE
County of ELPHINSTONE
Geaney Lane - Deeragun

In Association with:-
brazier motti
surveying | town planning | project management | mapping and GIS
Brazier Motti Pty Ltd (ACN 066 411 041)
595 Flinders St, Townsville, Q. 4810
Phone: 07 4772 1144, Fax: 07 4772 2557, Email: townsville@braziermotti.com.au

BASE SURVEY
Brazier Motti (06692/091)
TRUNCATED COORDINATES
E 0.000, N 0.000
EQUIVALENT TO
E 460000, N 7800000
LEVEL DATUM A.H.D.
Horizontal Datum GDA '94 Zone 55
Refer P.M. 177233 RL. 13.514
Bolt & washer in kerb,
Intersection SOMERTON/OUNDABELLA

Scale 'A' 0 2 4 6 m
Scale 'B' 0 200 400 600
Scale 'C' 0 100 200 300 400
THE ORIGINAL OF THIS DOCUMENT IS COMPLETED TO THE SCALE NOTED.
AS REPRODUCTION CAN DISTORT SIZE & SHAPE USE ONLY THE DIMENSIONS PROVIDED ON ARCHITECTURAL &/OR ENGINEERING DRAWINGS.
VERIFY DIMENSIONS ON SITE BEFORE CONSTRUCTION.

All work has been carried out in accordance with LOCAL AUTHORITIES standard details.

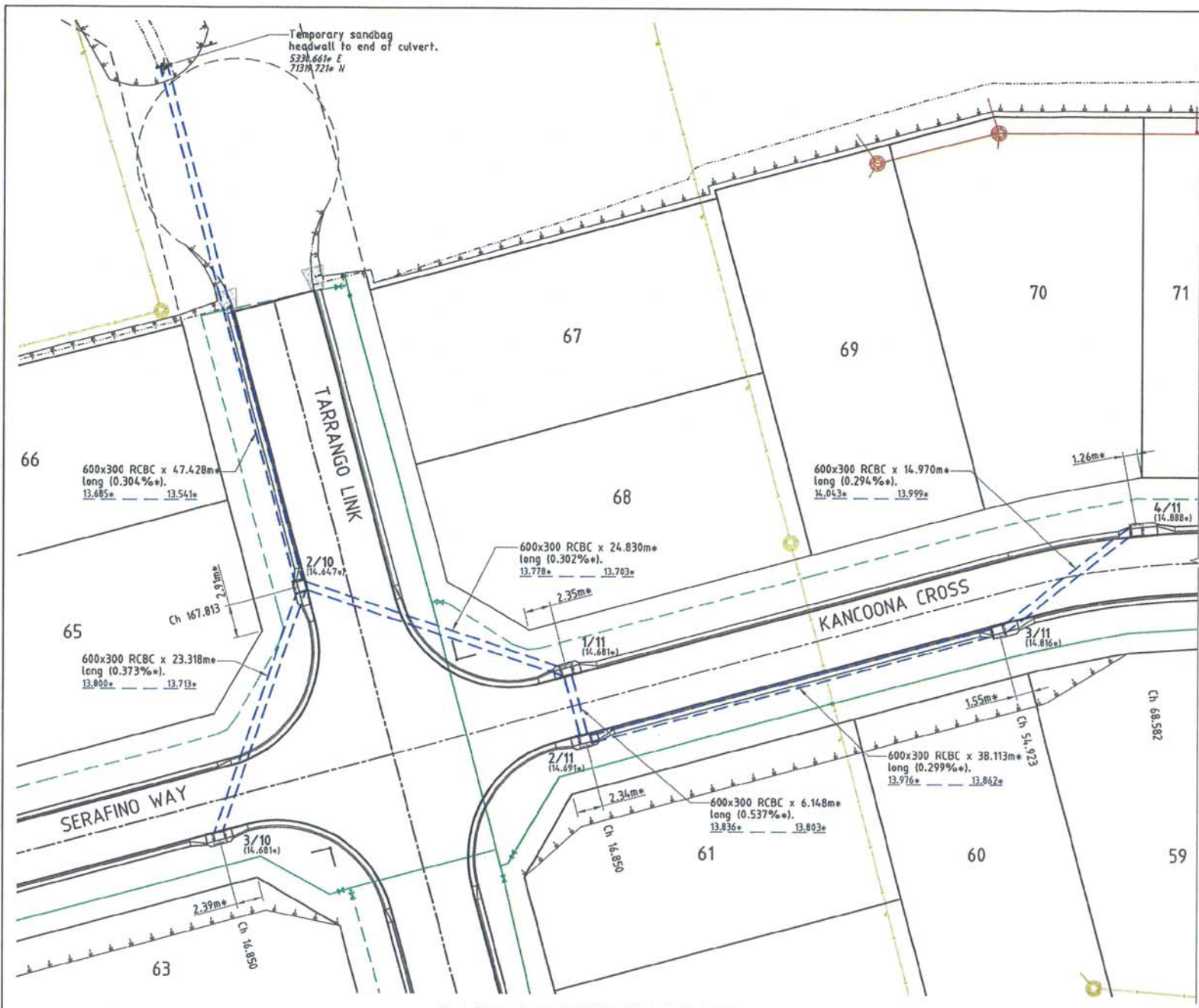
SCI QUAL INTERNATIONAL
QUALITY APPROVED TO
AS/NZS ISO 9001:2008
REG. NUMBER 10441

NORTHERN CONSULTING engineers
Civil & Structural Engineers
50 Punari Street, Currajong 4812
Phone: [07] 4725 5550 Fax: [07] 4725 5850
Email: mail@nceng.com.au
Milton Messer & Associates Pty. Ltd.
ACN 100 817 356

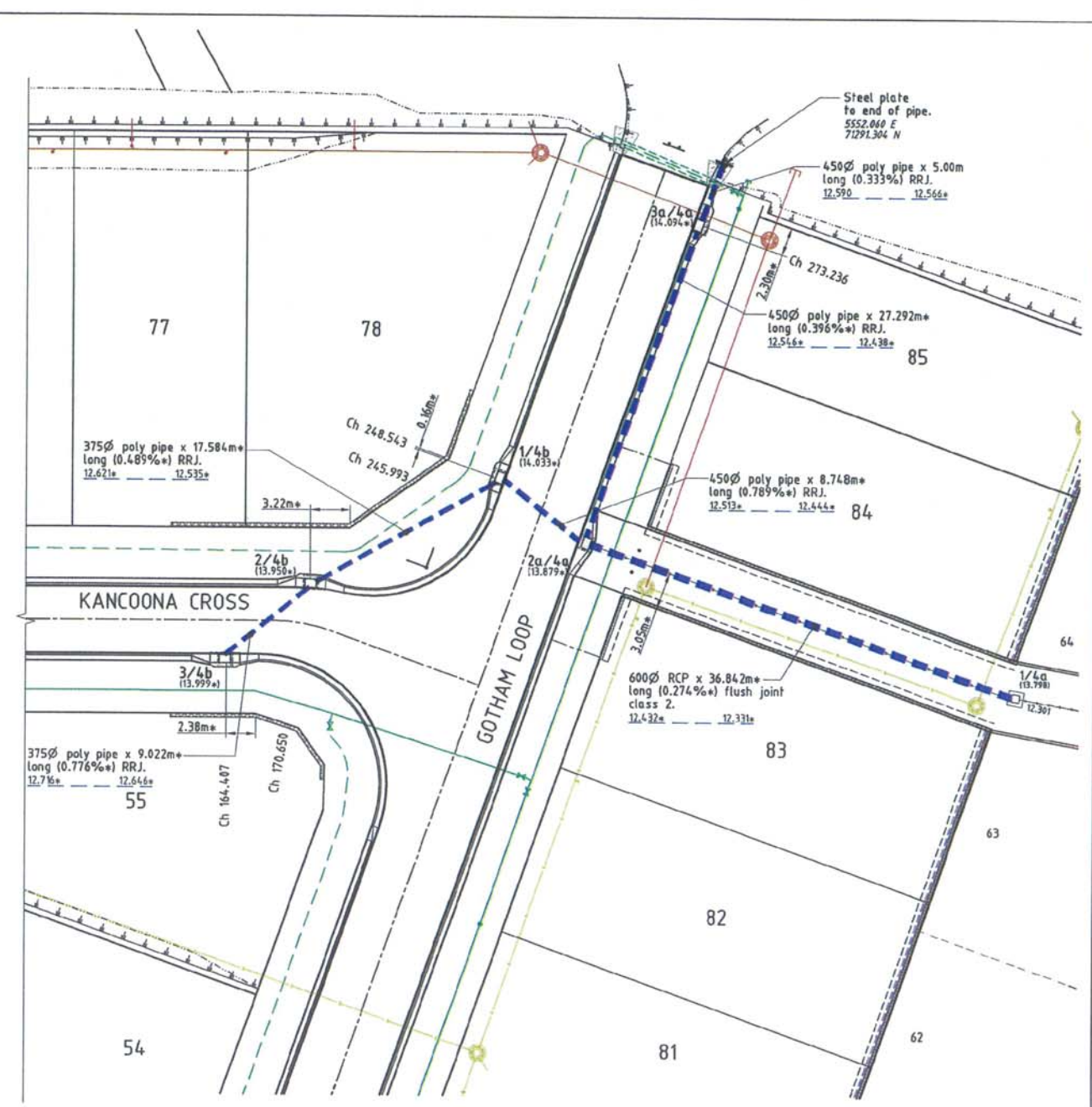
Issue	Description	Date
B	AMENDED TO AS CONSTRUCTED.	08/10/2014
A	ISSUED FOR TENDER / CONSTRUCTION	16/07/2012
P3	PRELIMINARY - NOT FOR CONSTRUCTION - FENCE HEIGHT AMENDED TO 1.5m - ISSUED COUNCIL APPROVAL (OPW).	12/07/2012
P2	PRELIMINARY - NOT FOR CONSTRUCTION - ISSUED COUNCIL APPROVAL (OPW).	29/04/2012
P1	PRELIMINARY - NOT FOR CONSTRUCTION - ISSUED FOR CLIENT APPROVAL & CONSULTANT INFORMATION.	17/02/2012

Drawn	JHS	In Association With	PARKSIDE DEVELOPMENT PTY LTD
Date	17/02/2012		
Checked	VA		
Approved	MA		
COPYRIGHT ©			

STORMWATER SURCHARGE FACILITY & CONSTRUCTION DETAILS	
Drawing Number	PARK0003/13
Issue	B



PART LAYOUT PLAN (A)



PART LAYOUT PLAN (B)

LEGEND

- 2/1 (12.000+) - Pit No. 2/Drainline No. 1
- 12.000+ - As constructed top of structure levels.
- - - - - As constructed pipe invert levels.
- - - - - RP boundary.
- - - - - Top of batter.
- - - - - Toe of batter.
- - - - - Change of grade.
- - - - - Invert of drain.
- - - - - Sewer main.
- - - - - Sewer manhole.
- - - - - uPVC water main.
- - - - - Poly water main.
- - - - - Stormwater drain line.
- - - - - Subsoil drainage.
- - - - - Sewer main.
- - - - - Sewer manhole.

REAL PROPERTY DESCRIPTION

Lot 2 on SP 232875
Parish of BOHLE
County of ELPHINSTONE
Geaney Lane - Deeragun

In Association with:

BASE SURVEY
Brazier Motti (05092/091)
TRUNCATED COORDINATES
E 8,000, N 0,000
EQUIVALENT TO
E 460000, N 7800000

LEVEL DATUM A.M.D.
Horizontal Datum GDA' 94 Zone 55
Refer P.M. 177233 RL, 13.514
Bolt & washer in kerb,
Intersection SOHERTON/DUNDELLA

AS CONSTRUCTED

BRAZIER & MOTTI PTY.LTD. (ACN 066 411 041), 595 FLINDERS STREET, TOWNSVILLE HEREBY CERTIFY THAT THIS DRAWING ACCURATELY AND CORRECTLY DESCRIBES AND RECORDS THE NATURE AND THE LOCATION OF THE WORKS DEPICTED BY ASTERISKS (*) HEREON AS THEY HAVE BEEN CONSTRUCTED FOR SUBDIVISION

All work has been carried out in accordance with LOCAL AUTHORITIES standard details.

Scale 1:1000
THE ORIGINAL OF THIS DOCUMENT IS COMPLETED TO THE SCALE NOTED. AS REPRODUCTION CAN DISTORT SIZE & SHAPE USE ONLY THE DIMENSIONS PROVIDED ON ARCHITECTURAL &/OR ENGINEERING DRAWINGS. VERIFY DIMENSIONS ON SITE BEFORE CONSTRUCTION.



Civil & Structural Engineers
50 Punari Street, Currajong 4812
Phone: [07] 4725 5550 Fax: [07] 4725 5850
Email: mail@nceng.com.au
Milton Messer & Associates Pty. Ltd.
ACN 100 817 350

STORMWATER STRUCTURE SETOUT TABLE

PIT No.	EASTING	NORTHING	STRUCTURE TYPE	TOP LEVEL
2/10	5338.458*	71272.938*	Grated Kerb Inlet (2400L) - Type 1	14.647*
3/10	5328.960*	71251.642*	Grated Kerb Inlet (2400C) - Type 1	14.681*
1/11	5361.268*	71263.130*	Grated Kerb Inlet (2400C) - Type 1	14.681*
2/11	5362.252*	71257.061*	Grated Kerb Inlet (2400C) - Type 1	14.691*
3/11	5395.865*	71263.214*	Grated Kerb Inlet (2400L) - Type 1	14.816*
4/11	5412.902*	71270.571*	Grated Kerb Inlet (2400R) - Type 1	14.888*
2a/4a	5538.094*	71261.763*	Grated Inlet - Non Standard	13.879*
3a/4a	5549.524*	71286.546*	Grated Kerb Inlet (2400L) - Type 1	14.094*
1/4b	5531.514*	71267.528*	Grated Kerb Inlet (2400C) - Type 1	14.833*
2/4b	5515.378*	71260.557*	Grated Kerb Inlet (2400C) - Type 1	13.950*
3/4b	5508.087*	71255.232*	Grated Kerb Inlet (2400C) - Type 1	13.999*

- All dimensions are to centre of chamber.
- Pit 2a/4a is non standard, refer to drawing PARK0003/13 for details.

Accepted
As Constructed

C AS CONSTRUCTED AMENDED TO COUNCIL REQUIREMENTS.	28/10/2014
B AMENDED TO AS CONSTRUCTED.	08/10/2014
A ISSUED FOR TENDER / CONSTRUCTION	16/07/2012
P2 PRELIMINARY - NOT FOR CONSTRUCTION - ISSUED COUNCIL APPROVAL (OPW).	20/04/2012
P1 PRELIMINARY - NOT FOR CONSTRUCTION - ISSUED FOR CLIENT APPROVAL & CONSULTANT INFORMATION.	17/02/2012

Issue	Description	Date
Drawn JHS	In Association With PARKSIDE DEVELOPMENT PTY LTD	
Date 17/02/2012	STAGE 3, 32 ALLOTMENT RESIDENTIAL SUBDIVISION	
Checked [Signature]	BRENDALE	
Approved [Signature]	TARRANGO LINK, DEERAGUN	
COPYRIGHT ©		

STORMWATER DRAIN LINE PLAN	Drawing Number	Issue
	PARK0003/14	C