

- LEGEND**
GENERAL:-
- - - - - RP boundary.
 - - - - - Top of batter.
 - - - - - Toe of batter.
 - - - - - Change of grade.
 - - - - - Invert of drain.
 - - - - - Sewer main.
 - - - - - Sewer manhole.
 - - - - - Crusher dust/sodic soil backfill.
 - - - - - uPVC water main.
 - - - - - Poly water main.
 - - - - - Stormwater drain line.
 - - - - - Subsoil drainage.
 - - - - - Stormwater drain line.
 - - - - - Subsoil drainage.
 - - - - - Sewer main.
 - - - - - Sewer manhole.
 - - - - - Water main.
 - - - - - Poly water main.
 - - - - - Fence.
 - - - - - Electrical power supply.

- SEWERAGE RETICULATION:-**
- Manhole Number
 - IA Sewer line description
 - Sewer invert levels at manhole.
 - 1A Sewer line description.
 - 150mm uPVC SN8 28.500m at 1:108.4 Diameter of pipe.
 - Distance between manholes, centreline to centreline and grade.
 - Top of manhole level.

- SERVICES:-**
- └ Direct connection (DC)
 - └ Jump up connection (JU)
 - └ Riser connection (RC)
 - └ 100mm manhole connection - Benching (BC) - Vertical Drop (VD)
 - └ Distance from downstream manhole to 'Y'-junction - dimension 'L'.
 - └ Invert level at limit of house connection branch.
 - └ Allotment connection dimension 'X'.
 - └ Allotment connection dimension 'Y'.
 - └ Type JU
 - └ Type RC
 - └ Level at top of riser cap.

- NOTES:**
1. All sewer manholes are 1050mm type C2 U.N.O.
 2. All sewer manhole tops are type 2 class 'B' covers U.N.O.
 3. All 150mm sewer mains & fittings are uPVC class SN8.
 4. All 100mm sewer mains & fittings are uPVC class SN10.

REAL PROPERTY DESCRIPTION
Lot 2 on SP 232875
Parish of BOHLE
County of ELPHINSTONE
Geaney Lane - Deeragun

In Association with:

surveying | town planning | project management | mapping and GIS
Brazier Motti Pty Ltd (ACN 066 411 041)
595 Flinders St, Townsville, Q, 4810
Phone 07 4772 1144, Fax 07 4772 2557, Email: townsville@braziermotti.com.au

AS CONSTRUCTED

BRAZIER & MOTTI PTY LTD. (ACN 066 411 041), 595 FLINDERS STREET, TOWNSVILLE HEREBY CERTIFY THAT THIS DRAWING ACCURATELY AND CORRECTLY DESCRIBES AND RECORDS THE NATURE AND THE LOCATION OF THE WORKS DEPICTED BY ASTERISKS (*) HEREON AS THEY HAVE BEEN CONSTRUCTED FOR SUBDIVISION

REGISTERED SURVEYOR AND DIRECTOR
DATED THIS DAY: 31 OF Oct. 2014

BASE SURVEY
Brazier Motti (06092/091)
TRUNCATED COORDINATES
E 0.000, N 0.000
EQUIVALENT TO
E 460000, N 7800000

LEVEL DATUM A.M.D.
Horizontal Datum GDA' 94 Zone 55
Refer P.M. 17233 RL. 13.516
Bolt & washer in kerb
Intersection SOMERTON/DUNDABELLA

Scale
0 5 10 15 20m

THE ORIGINAL OF THIS DOCUMENT IS COMPLETED TO THE SCALE NOTED. AS REPRODUCTION CAN DISTORT SIZE & SHAPE USE ONLY THE DIMENSIONS PROVIDED BY ARCHITECTURAL &/OR ENGINEERING DRAWINGS. VERIFY DIMENSIONS ON SITE BEFORE CONSTRUCTION.

LAYOUT PLAN

- Indicates calculated 'Y' junction level (200mm above sewer main invert)

Manhole No.	Easting	Northing
1/WD2E4	5555.125m	71284.767m
1/WD2E5	5537.508m	71293.471m
2/WD2E5	5459.232m	71301.445m
3/WD2E5	5404.131m	71307.030m
4/WD2E5	5393.048m	71305.367m

- All dimensions are to centre of chamber.

All work has been carried out in accordance with LOCAL AUTHORITIES standard details.

Civil & Structural Engineers
50 Punari Street, Currarajong 4812
Phone: (07) 4725 5550 Fax: (07) 4725 5850
Email: mail@nceng.com.au
Milton Messer & Associates Pty. Ltd.
ACN 100 817 350

SEWER MANHOLES

Manhole No.	Easting	Northing
1/WD2E4	5555.125m	71284.767m
1/WD2E5	5537.508m	71293.471m
2/WD2E5	5459.232m	71301.445m
3/WD2E5	5404.131m	71307.030m
4/WD2E5	5393.048m	71305.367m

Accepted As Constructed

AS CONSTRUCTED AMENDED TO COUNCIL REQUIREMENTS.
C AMENDED TO AS CONSTRUCTED.
B ISSUED FOR TENDER / CONSTRUCTION
A PRELIMINARY - NOT FOR CONSTRUCTION - ISSUED COUNCIL APPROVAL (OPW).
P1 PRELIMINARY - NOT FOR CONSTRUCTION - ISSUED FOR CLIENT APPROVAL & CONSULTANT INFORMATION.

Issue	Description	Date
C	AS CONSTRUCTED AMENDED TO COUNCIL REQUIREMENTS.	28/10/2014
B	AMENDED TO AS CONSTRUCTED.	08/10/2014
P2	ISSUED FOR TENDER / CONSTRUCTION	16/07/2012
A	PRELIMINARY - NOT FOR CONSTRUCTION - ISSUED COUNCIL APPROVAL (OPW).	20/04/2012
P1	PRELIMINARY - NOT FOR CONSTRUCTION - ISSUED FOR CLIENT APPROVAL & CONSULTANT INFORMATION.	17/02/2012

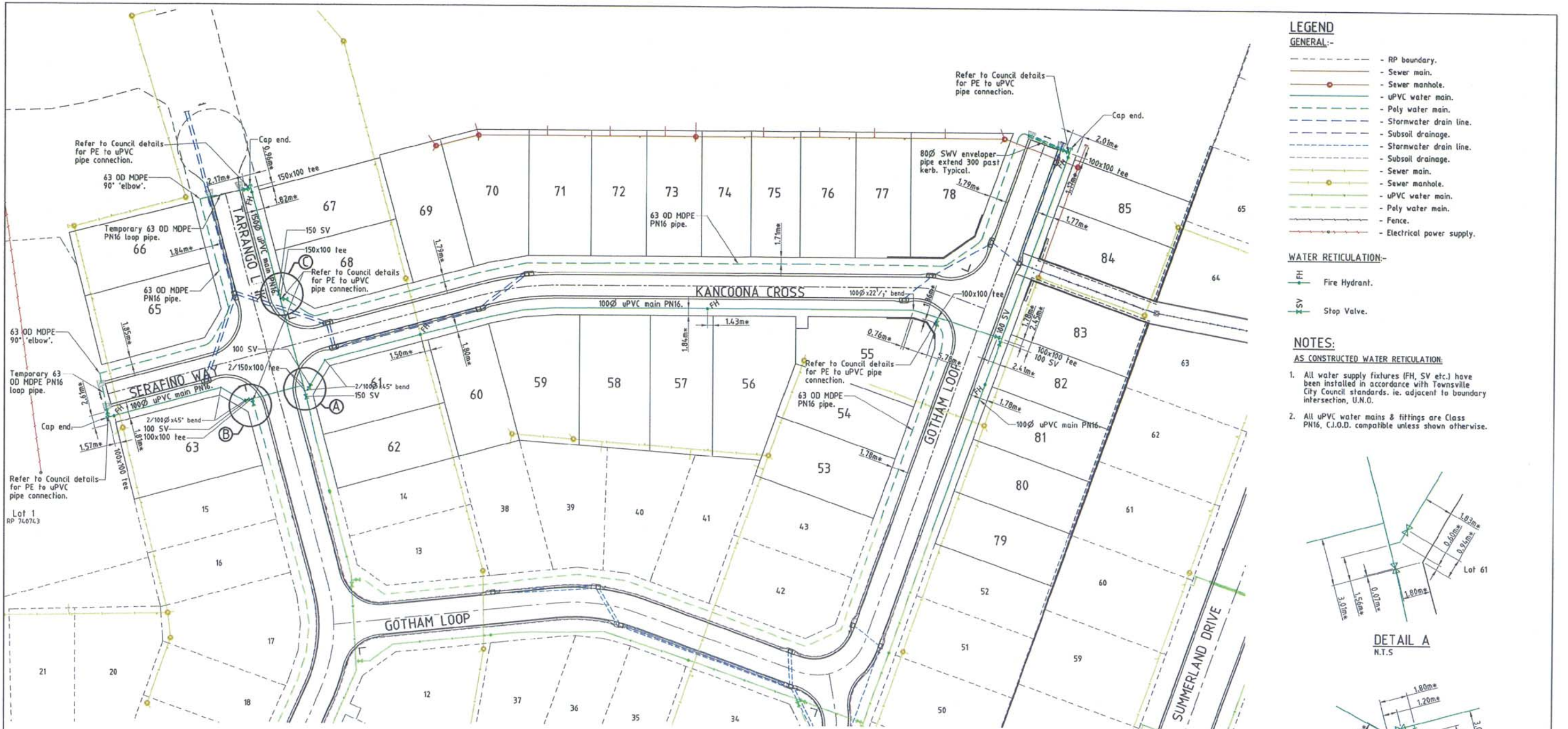
Drawn: JHS
Date: 17/02/2012
Checked: [Signature]
Approved: [Signature]

Copyright ©

In Association with
PARKSIDE DEVELOPMENT PTY LTD
STAGE 3, 32 ALLOTMENT RESIDENTIAL SUBDIVISION
BRENDALE
TARRANGO LINK, DEERAGUN

SEWERAGE RETICULATION PLAN
Drawing Number
PARK003/15

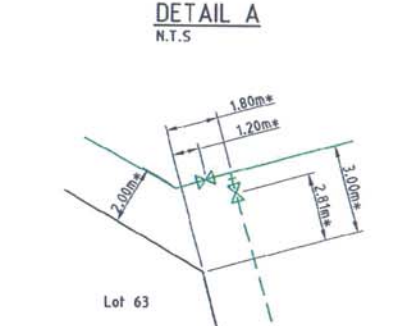
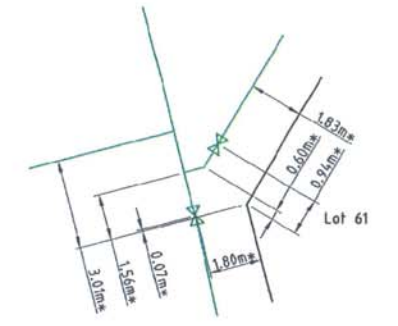
Issue
C



- LEGEND**
GENERAL:-
- - - - - RP boundary.
 - - - - - Sewer main.
 - - - - - Sewer manhole.
 - - - - - uPVC water main.
 - - - - - Poly water main.
 - - - - - Stormwater drain line.
 - - - - - Subsoil drainage.
 - - - - - Stormwater drain line.
 - - - - - Subsoil drainage.
 - - - - - Sewer main.
 - - - - - Sewer manhole.
 - - - - - uPVC water main.
 - - - - - Poly water main.
 - - - - - Fence.
 - - - - - Electrical power supply.

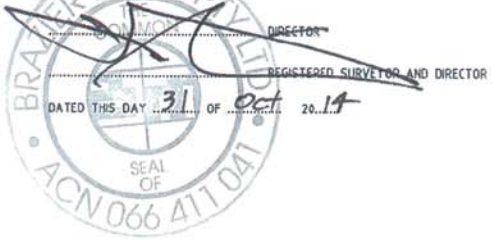
- WATER RETICULATION:-**
- FH Fire Hydrant.
 - SV Stop Valve.

- NOTES:**
AS CONSTRUCTED WATER RETICULATION:
- All water supply fixtures (FH, SV etc.) have been installed in accordance with Townsville City Council standards, ie. adjacent to boundary intersection, U.N.O.
 - All uPVC water mains & fittings are Class PN16, C.I.O.D. compatible unless shown otherwise.



LAYOUT PLAN

AS CONSTRUCTED
BRAZIER & MOTTI PTY.LTD. (ACN 066 411 041), 595 FLINDERS STREET, TOWNSVILLE HEREBY CERTIFY THAT THIS DRAWING ACCURATELY AND CORRECTLY DESCRIBES AND RECORDS THE NATURE AND THE LOCATION OF THE WORKS DEPICTED BY ASTERISKS (*) HEREON AS THEY HAVE BEEN CONSTRUCTED FOR SUBDIVISION



**Accepted
As Constructed**

REAL PROPERTY DESCRIPTION

Lot 2 on SP 232875
Parish of BOHLE
County of ELPHINSTONE
Geaney Lane - Deeragun

In Association with:-

surveying | town planning | project management | mapping and GIS
Brazier Motti Pty Ltd (ACN 066 411 041)
595 Flinders St, Townsville, Q., 4810
Phone: 07 4772 1144, Fax: 07 4772 2557, Email: townsville@braziermotti.com.au

BASE SURVEY
Brazier Motti (06692/091)
TRUNCATED COORDINATES
E 0.000, N 0.000
EQUIVALENT TO
E 466000, N 7800000
LEVEL DATUM A.H.D.
Horizontal Datum GDA' 94 Zone 55
Refer P.M. 177233 RL, 13.514
Belt & washer in kerb.
Intersection SOMERTON/DUNDELLA

Scale
0 5 10 15 20m
THE ORIGINAL OF THIS DOCUMENT IS COMPLETED TO THE SCALE NOTED. AS REPRODUCTION CAN DISTORT SIZE & SHAPE USE ONLY THE DIMENSIONS PROVIDED ON ARCHITECTURAL &/OR ENGINEERING DRAWINGS. VERIFY DIMENSIONS ON SITE BEFORE CONSTRUCTION.

All work has been carried out in accordance with LOCAL AUTHORITIES standard details.



NORTHERN CONSULTING
engineers
Civil & Structural Engineers
50 Punari Street, Currajong 4812
Phone: [07] 4725 5550 Fax: [07] 4725 5850
Email: mail@nceng.com.au
Milton Messer & Associates Pty. Ltd.
ACN 100 817 355

Issue	Description	Date
C	AS CONSTRUCTED AMENDED TO COUNCIL REQUIREMENTS.	28/10/2014
B	AMENDED TO AS CONSTRUCTED.	08/10/2014
A	ISSUED FOR TENDER / CONSTRUCTION	16/07/2012
P2	PRELIMINARY - NOT FOR CONSTRUCTION - ISSUED COUNCIL APPROVAL (OPW).	20/04/2012
P1	PRELIMINARY - NOT FOR CONSTRUCTION - ISSUED FOR CLIENT APPROVAL & CONSULTANT INFORMATION.	17/02/2012

Drawn JHS Date 17/02/2012 Checked D.A. Approved [Signature]	In Association With PARKSIDE DEVELOPMENT PTY LTD STAGE 3, 32 ALLOTMENT RESIDENTIAL SUBDIVISION BRENDALE TARRANGO LINK, DEERAGUN	WATER RETICULATION PLAN Drawing Number PARK003/16	Issue C
--	--	---	-------------------