

LAYOUT PLAN

**Accepted
As Constructed**

REAL PROPERTY DESCRIPTION

Lot 2 on SP 232875
Parish of BOHLE
County of ELPHINSTONE
Geaney Lane - Deeragun

In Association with:-

surveying | town planning | project management | mapping and GIS

Brazier Motti Pty Ltd (ACN 066 411 041)
595 Flinders St, Townsville, Q, 4810
Phone: 07 4772 1144, Fax: 07 4772 2557, Email: townsville@braziermotti.com.au

BASE SURVEY
Brazier Motti (04092/091)
TRUNCATED COORDINATES
E 0.000, N 0.000
EQUIVALENT TO
E 466000, N 7800000

LEVEL DATUM A.H.D.
Horizontal Datum GDA '94 Zone 55
Refer P.M. 177233 RL, 13.514
Bell & washer in kerb
Intersection SOMERTON/DUNDABELLA



THE ORIGINAL OF THIS DOCUMENT IS COMPLETED TO THE SCALE NOTED.
AS REPRODUCTION CAN DISTORT SIZE & SHAPE USE ONLY THE
DIMENSIONS PROVIDED IN ARCHITECTURAL &/OR ENGINEERING DRAWINGS.
VERIFY DIMENSIONS ON-SITE BEFORE CONSTRUCTION.

All work has been carried out in accordance with LOCAL AUTHORITIES standard details.



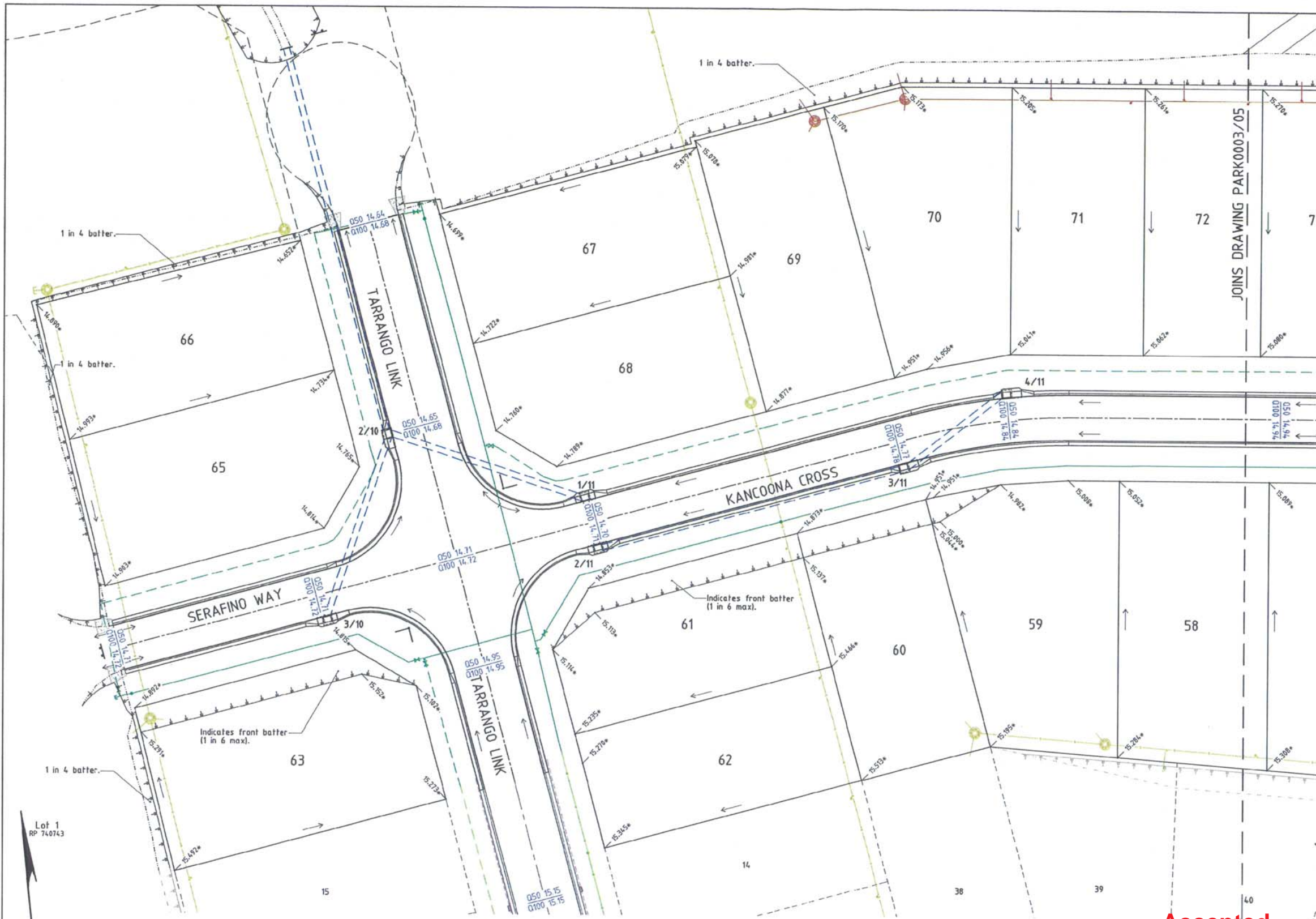
NORTHERN CONSULTING
engineers

Civil & Structural Engineers
50 Punari Street, Currajong 4812
Phone: (07) 4725 5550 Fax: (07) 4725 5850
Email: mail@ncong.com.au
Milton Messer & Associates Pty. Ltd.
ACN 100 817 350

REFER TO DRAWING PARK0003/08 FOR ROAD TYPICAL SECTIONS.

| Issue | Description | Date |
|-------|---|------------|
| C | AS CONSTRUCTED AMENDED TO COUNCIL REQUIREMENTS. | 28/10/2014 |
| B | AMENDED TO AS CONSTRUCTED. | 08/10/2014 |
| A | ISSUED FOR TENDER / CONSTRUCTION | 16/07/2012 |
| P2 | PRELIMINARY - NOT FOR CONSTRUCTION - ISSUED COUNCIL APPROVAL (OPW). | 26/04/2012 |
| P1 | PRELIMINARY - NOT FOR CONSTRUCTION - ISSUED FOR CLIENT APPROVAL & CONSULTANT INFORMATION. | 17/02/2012 |

| | | |
|--------------------|---|---|
| Drawn JHS | In Association With PARKSIDE DEVELOPMENT PTY LTD | LAYOUT PLAN ROADWORKS & STORMWATER |
| Date 17/02/2012 | STAGE 3, 32 ALLOTMENT RESIDENTIAL SUBDIVISION BRENDALE TARRANGO LINK, DEERAGUN | |
| Checked D.A. | | Drawing Number PARK0003/03 |
| Approved D.A. | | Issue C |



- LEGEND**
- 12.000*
 - 050 13.48
 - 0100 13.50
 - Stormwater flow arrow.
 - RP boundary.
 - Top of batter.
 - Toe of batter.
 - Change of grade.
 - Invert of drain.
 - Sever main.
 - Sever manhole.
 - uPVC water main.
 - Poly water main.
 - Stormwater drain line.
 - Subsoil drainage.
 - Subsoil drainage.
 - Sever main.
 - Sever manhole.
 - uPVC water main.
 - Poly water main.

NOTES:
 1. All 050 flows remain within the road & drainage reserves.

AS CONSTRUCTED
 BRAZIER & MOTTI PTY.LTD. (ACN 066 411 041), 595 FLINDERS STREET, TOWNSVILLE HEREBY CERTIFY THAT THIS DRAWING ACCURATELY AND CORRECTLY DESCRIBES AND RECORDS THE NATURE AND THE LOCATION OF THE WORKS DEPICTED BY ASTERISKS (*) HEREON AS THEY HAVE BEEN CONSTRUCTED FOR SUBDIVISION

DATED THIS DAY 31 OF OCT 2014

REGISTERED SURVEYOR AND DIRECTOR
 SEAL OF
 ACN 066 411 041

**Accepted
 As Constructed**

LAYOUT PLAN

REAL PROPERTY DESCRIPTION

Lot 2 on SP 232875
 Parish of BOHLE
 County of ELPHINSTONE
 Geaney Lane - Deeragun

In Association with:-

surveying | town planning | project management | mapping and GIS

Brazier Motti Pty Ltd (ACN 066 411 041)
 595 Flinders St, Townsville, Q. 4810
 Phone: 07 4772 1144, Fax: 07 4772 2557, Email: townsville@braziermotti.com.au

BASE SURVEY
 Brazier Motti (06092/091)
 TRUNCATED COORDINATES
 E 0.000, N 0.000
 EQUIVALENT TO
 E 460000, N 7800000

LEVEL DATUM A.H.D.
 Horizontal Datum GDA' 94 Zone 55
 Refer P.M. 177233 RL. 13.514
 Bolt & vcsr in kerb.
 Intersection SOMERTON/DUNDABELLA

Scale
 1:1000

THE ORIGINAL OF THIS DOCUMENT IS COMPLETED TO THE SCALE NOTED.
 AS REPRODUCTION CAN DISTORT SIZE & SHAPE USE ONLY THE DIMENSIONS PROVIDED ON ARCHITECTURAL &/OR ENGINEERING DRAWINGS.
 VERIFY DIMENSIONS ON SITE BEFORE CONSTRUCTION.

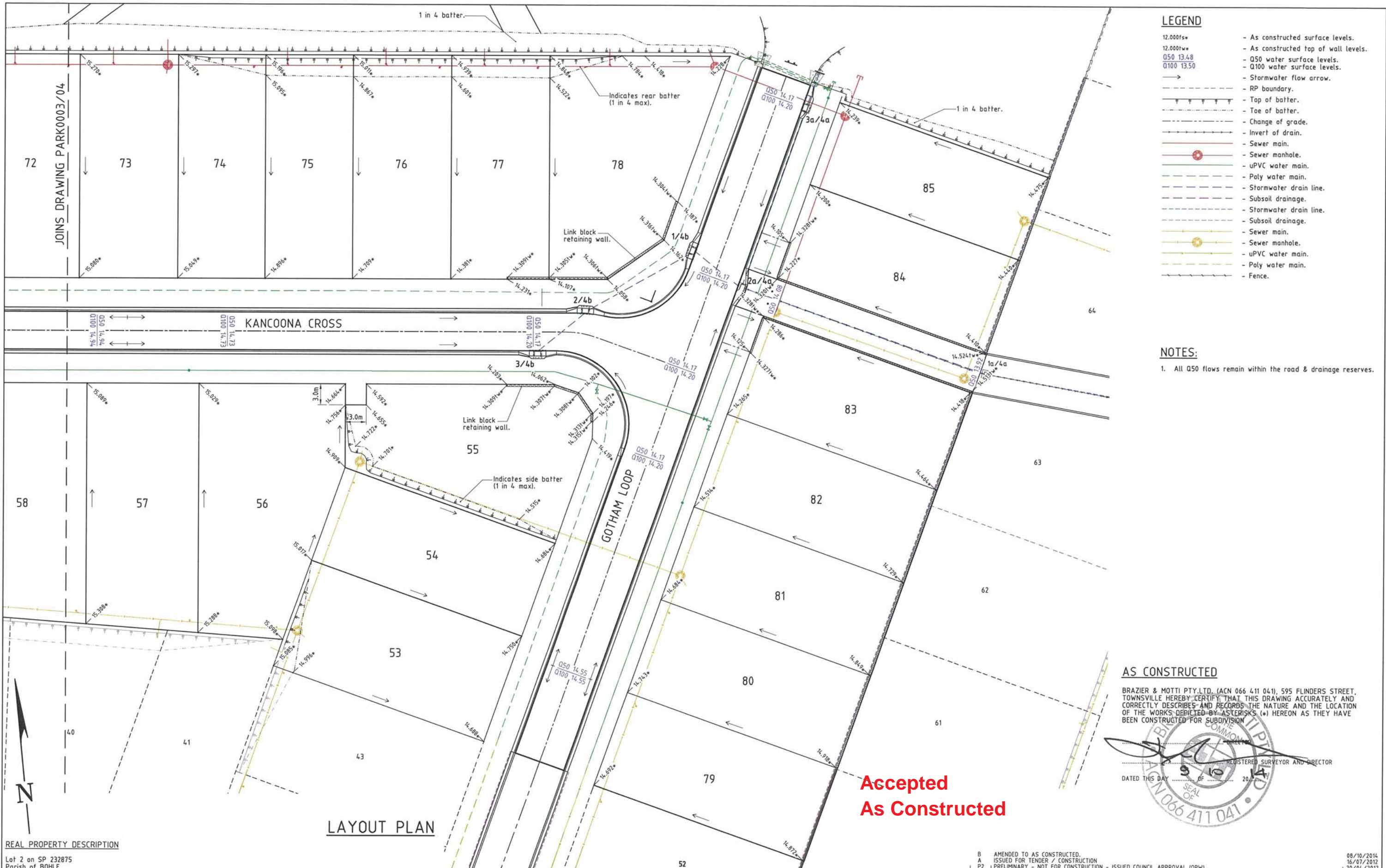
All work has been carried out in accordance with LOCAL AUTHORITIES standard details.



Civil & Structural Engineers
 50 Punari Street, Currajong 4812
 Phone: [07] 4725 5550 Fax: [07] 4725 5850
 Email: mail@ncong.com.au
 Milton Messer & Associates Pty. Ltd.
 ACN 100 817 356

| Issue | Description | Date |
|-------|---|------------|
| C | AS CONSTRUCTED AMENDED TO COUNCIL REQUIREMENTS. | 28/10/2014 |
| B | AMENDED TO AS CONSTRUCTED. | 08/10/2014 |
| A | ISSUED FOR TENDER / CONSTRUCTION. | 16/07/2012 |
| P2 | PRELIMINARY - NOT FOR CONSTRUCTION - ISSUED COUNCIL APPROVAL (OPV). | 20/04/2012 |
| P1 | PRELIMINARY - NOT FOR CONSTRUCTION - ISSUED FOR CLIENT APPROVAL & CONSULTANT INFORMATION. | 17/02/2012 |

| | | |
|-------------------------|---|--------------------------------------|
| Drawn JHS | In Association With PARKSIDE DEVELOPMENT PTY LTD | CUT/FILL LAYOUT PLAN |
| Date 17/02/2012 | STAGE 3, 32 ALLOTMENT RESIDENTIAL SUBDIVISION BRENDALE TARRANGO LINK, DEERAGUN | |
| Checked D.A. | | Drawing Number PARK0003/04 |
| Approved [Signature] | | Issue C |



REAL PROPERTY DESCRIPTION

Lot 2 on SP 232875
 Parish of BOHLE
 County of ELPHINSTONE
 Geaney Lane - Deeragun

In Association with:-

surveying | town planning | project management | mapping and GIS

Brazier Motti Pty Ltd (ACN 066 411 041)
 595 Flinders St, Townsville, Q, 4810
 Phone: 07 4772 1144, Fax: 07 4772 2557, Email: townsville@braziermotti.com.au

BASE SURVEY
 Brazier Motti (06092/091)
 TRUNCATED COORDINATES
 E 0.000, N 0.000
 EQUIVALENT TO
 E 460000, N 7800000

LEVEL DATUM A.H.D.
 Horizontal Datum GDA' 94 Zone 55
 Refer P.M. 177233 RL. 13.514
 Bolt & washer in kerb.
 Intersection SOMERTON/DUNDELLA



THE ORIGINAL OF THIS DOCUMENT IS COMPLETED TO THE SCALE NOTED.
 AS REPRODUCTION CAN DISTORT SIZE & SHAPE USE ONLY THE DIMENSIONS PROVIDED ON ARCHITECTURAL &/OR ENGINEERING DRAWINGS.
 VERIFY DIMENSIONS ON SITE BEFORE CONSTRUCTION.

All work has been carried out in accordance with LOCAL AUTHORITIES standard details.



Civil & Structural Engineers
 50 Punari Street, Currajong 4812
 Phone: [07] 4725 5550 Fax: [07] 4725 5850
 Email: mail@nceng.com.au
 Milton Messer & Associates Pty. Ltd.
 ACN 100 817 356

Accepted As Constructed

AS CONSTRUCTED

BRAZIER & MOTTI PTY.LTD. (ACN 066 411 041), 595 FLINDERS STREET, TOWNSVILLE HEREBY CERTIFY THAT THIS DRAWING ACCURATELY AND CORRECTLY DESCRIBES AND RECORDS THE NATURE AND THE LOCATION OF THE WORKS DEPICTED BY ASTERISKS (*) HEREON AS THEY HAVE BEEN CONSTRUCTED FOR SUBDIVISION

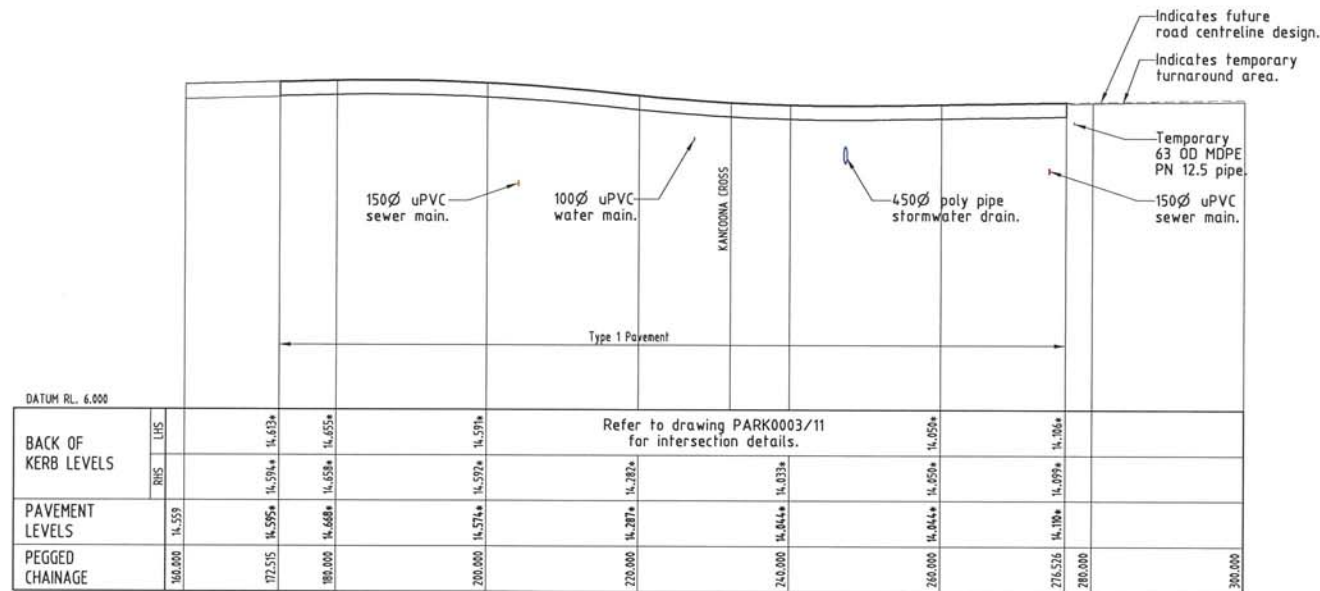
DATED THIS DAY 10 OF 2014

| Issue | Description | Date |
|-------|---|------------|
| B | AMENDED TO AS CONSTRUCTED. | 08/10/2014 |
| A | ISSUED FOR TENDER / CONSTRUCTION | 16/07/2012 |
| P2 | PRELIMINARY - NOT FOR CONSTRUCTION - ISSUED COUNCIL APPROVAL (OPW). | 20/04/2012 |
| P1 | PRELIMINARY - NOT FOR CONSTRUCTION - ISSUED FOR CLIENT APPROVAL & CONSULTANT INFORMATION. | 17/02/2012 |

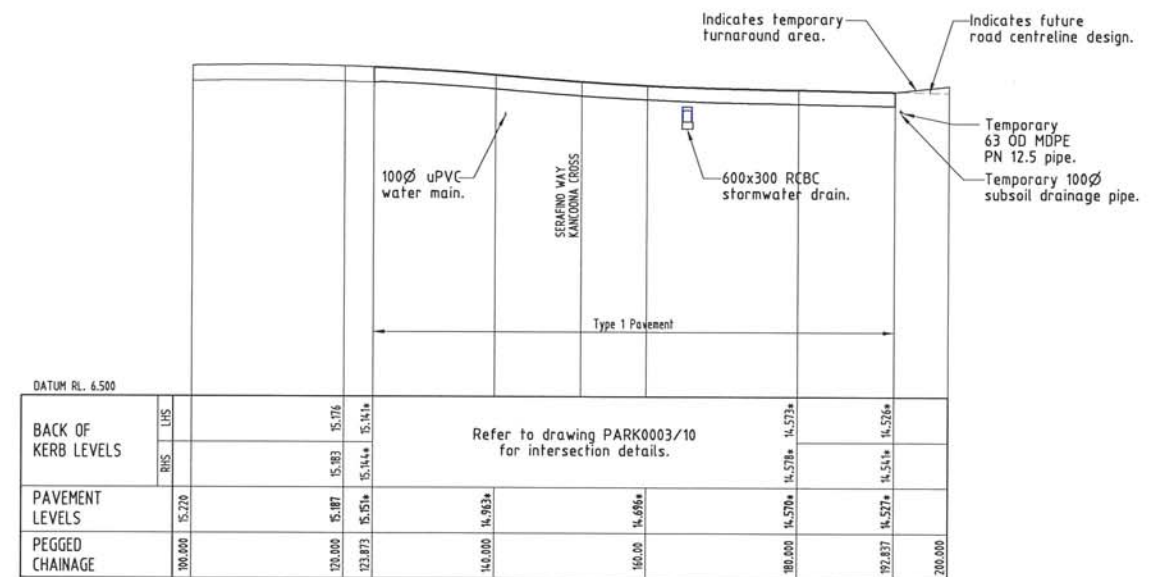
| | | |
|--|--|-------------------------------------|
| Drawn JHS Date 17/02/2012 | In Association With PARKSIDE DEVELOPMENT PTY LTD | CUT/FILL LAYOUT PLAN |
| Checked D.A. Approved [Signature] | STAGE 3, 32 ALLOTMENT RESIDENTIAL SUBDIVISION | |
| COPYRIGHT © | | Drawing Number PARK003/05 |
| | | Issue B |

PAVEMENT TABLE

| PAVEMENT TYPE | PAVEMENT DESCRIPTION |
|---------------|---|
| TYPE 1 | 30mm DG10 AC AMCO Prime 100mm Cement modified Base Type 2.1, 1.5% cement by weight. 125mm Cement modified Sub-base Type 2.3, 1.5% cement by weight. 200mm In-situ Lime Stabilised (3.0% Hydrated Lime, Spread rate 17kg/m ²). |



GOTHAM LOOP
(Regulatory Speed Zone 50 km/h)



TARRANGO LINK
(Regulatory Speed Zone 50 km/h)

LONGITUDINAL SECTIONS

Scale 'A' - Horizontal
Scale 'B' - Vertical

AS CONSTRUCTED

BRAZIER & MOTTI PTY LTD (ACN 066 411 041), 595 FLINDERS STREET, TOWNSVILLE HEREBY CERTIFY THAT THIS DRAWING ACCURATELY AND CORRECTLY DESCRIBES AND RECORDS THE NATURE AND THE LOCATION OF THE WORKS DEPICTED BY ASTERISKS (*) HEREON AS THEY HAVE BEEN CONSTRUCTED FOR SUBDIVISION

REGISTERED SURVEYOR AND DIRECTOR
DATED THIS DAY 10 OF 10 2014

AS CONSTRUCTED

Northern Consulting Engineers hereby certify that the works detailed on this drawing have been constructed to the dimensions and levels detailed.

Date: 8-10-14
Derek Robert Conley Saw

REAL PROPERTY DESCRIPTION

Lot 2 on SP 232875
Parish of BOHLE
County of ELPHINSTONE
Geaney Lane - Deeragun

In Association with:-

surveying | town planning | project management | mapping and GIS
Brazier Motti Pty Ltd (ACN 066 411 041)
595 Flinders St, Townsville, Q. 4810
Phone: 07 4772 1144, Fax: 07 4772 2557, Email: townsville@braziermotti.com.au

BASE SURVEY
Brazier Motti (06092/091)
TRUNCATED COORDINATES
E 0.000, N 0.000
EQUIVALENT TO
E 460000, N 7800000
LEVEL DATUM A.H.D.
Horizontal Datum GDA' 94 Zone 55
Refer P.M. 177233 RL. 13.514
Bolt & washer in kerb.
Intersection SOMERTON/DUNDELLA

Scale 'A' 1:1000
Scale 'B' 1:100
THE ORIGINAL OF THIS DOCUMENT IS COMPLETED TO THE SCALE NOTED.
AS REPRODUCTION CAN DISTORT SIZE & SHAPE USE ONLY THE DIMENSIONS PROVIDED ON ARCHITECTURAL &/OR ENGINEERING DRAWINGS.
VERIFY DIMENSIONS ON SITE BEFORE CONSTRUCTION.

All work has been carried out in accordance with LOCAL AUTHORITIES standard details.

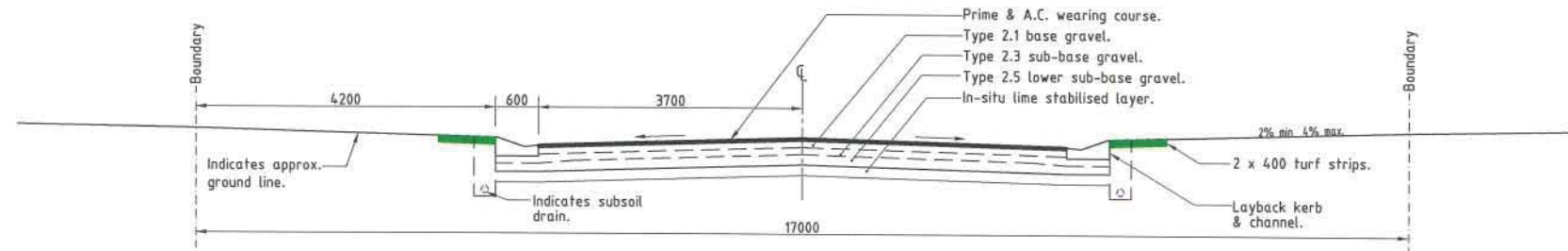


Civil & Structural Engineers
50 Punari Street, Currajong 4812
Phone: [07] 4725 5550 Fax: [07] 4725 5850
Email: mail@nceng.com.au
Milton Messer & Associates Pty. Ltd.
ACN 100 817 356

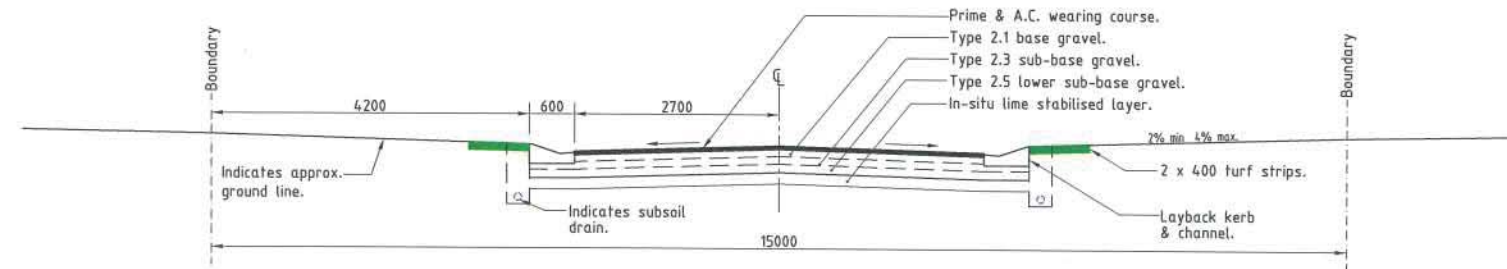
Accepted
As Constructed
REFER TO DRAWING PARK003/08 FOR ROAD TYPICAL SECTIONS.

| Issue | Description | Date |
|-------|---|------------|
| B | AMENDED TO AS CONSTRUCTED. | 08/10/2014 |
| A | ISSUED FOR TENDER / CONSTRUCTION | 16/07/2012 |
| P2 | PRELIMINARY - NOT FOR CONSTRUCTION - ISSUED COUNCIL APPROVAL (OPW). | 20/04/2012 |
| P1 | PRELIMINARY - NOT FOR CONSTRUCTION - ISSUED FOR CLIENT APPROVAL & CONSULTANT INFORMATION. | 17/02/2012 |

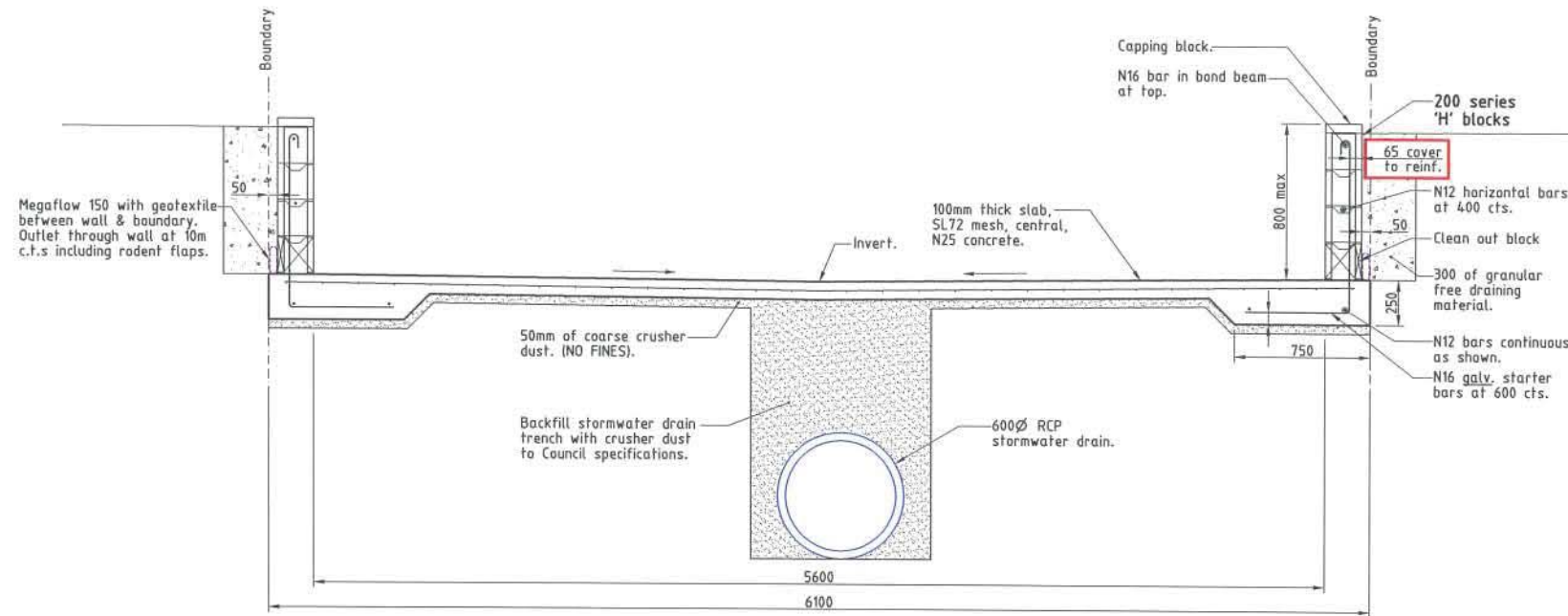
| Drawn | In Association With | Description | Issue |
|-------------|---|----------------------------|-------|
| JHS | PARKSIDE DEVELOPMENT PTY LTD | ROAD LONGITUDINAL SECTIONS | B |
| Date | | | |
| 17/02/2012 | | | |
| Checked | STAGE 3, 32 ALLOTMENT RESIDENTIAL SUBDIVISION | Drawing Number | |
| P.A. | BRENDALE | PARK003/06 | |
| Approved | TARRANGO LINK, DEERAGUN | | |
| COPYRIGHT © | | | |



TYPICAL SECTION - GOTHAM LOOP & TARRANGO LINK
Scale 'A'



TYPICAL SECTION - SERAFINO WAY & KANCOONA CROSS
Scale 'A'



TYPICAL SECTION - OVERLAND DRAINAGE STRUCTURE
Scale 'B'

AS CONSTRUCTED

Northern Consulting Engineers hereby certify that the works detailed on this drawing have been constructed to the dimensions and levels detailed.

[Signature]
Derek Robert Gately Saw
Date: 8-10-14

REAL PROPERTY DESCRIPTION

Lot 2 on SP 232875
Parish of BOHLE
County of ELPHINSTONE
Geaney Lane - Deeragun

In Association with:-



surveying | town planning | project management | mapping and GIS

Brazier Motti Pty Ltd (ACH 066 411 041)

595 Flinders St, Townsville, Q, 4810

Phone: 07 4772 1144, Fax: 07 4772 2557, Email: townsville@braziermotti.com.au

BASE SURVEY
Brazier Motti (06092/091)
TRUNCATED COORDINATES
E 0.000, N 0.000
EQUIVALENT TO
E 460000, N 7800000

LEVEL DATUM A.H.D.
Horizontal Datum GDA' 94 Zone 55
Refer P.M. 177233 RL. 13.514
Bolt & washer in kerb.
Intersection SOMERTON/DUNDEBELLA

TYPICAL SECTIONS

All work has been carried out in accordance with LOCAL AUTHORITIES standard details.



SCI QUAL INTERNATIONAL
QUALITY APPROVED TO
AS/NZS 2900:2005
REG. Number 2004



Civil & Structural Engineers
50 Punari Street, Currajong 4812
Phone: [07] 4725 5550 Fax: [07] 4725 5850
Email: mail@nceng.com.au
Milton Messer & Associates Pty. Ltd.
ACN 100 817 356

**Accepted
As Constructed**

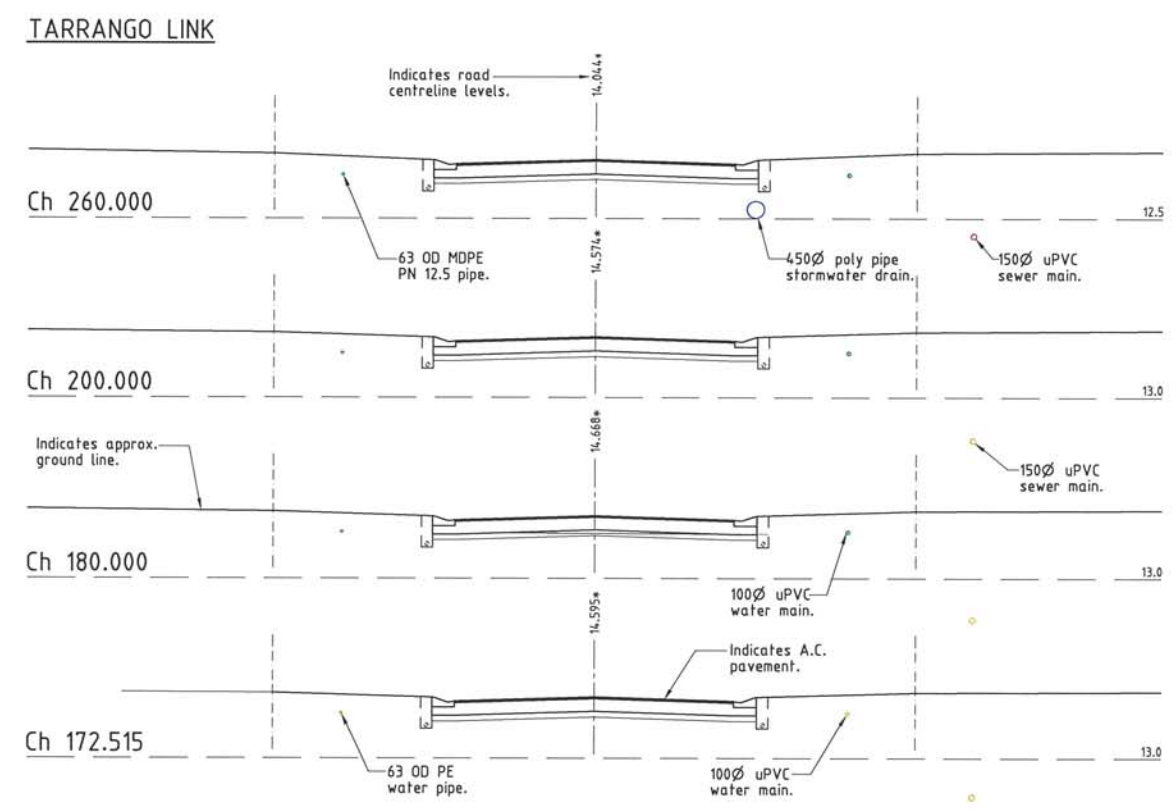
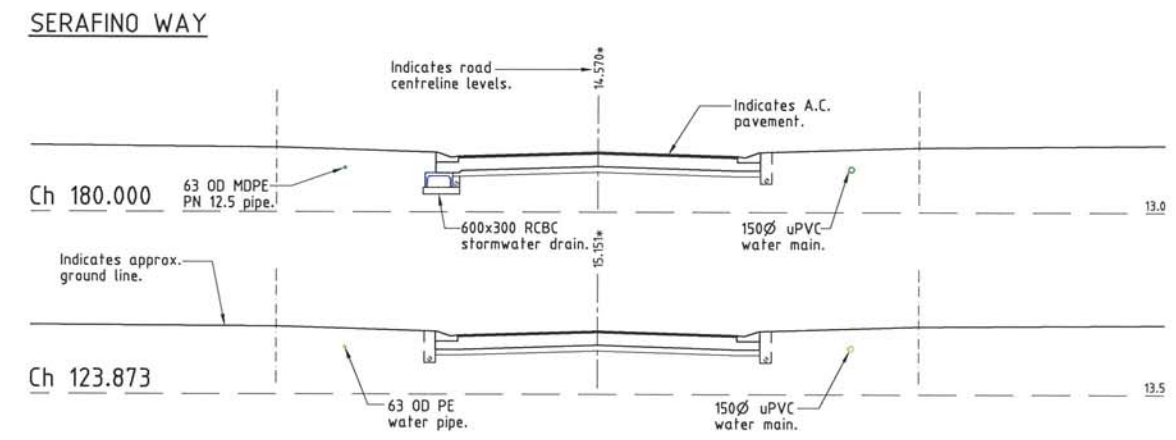
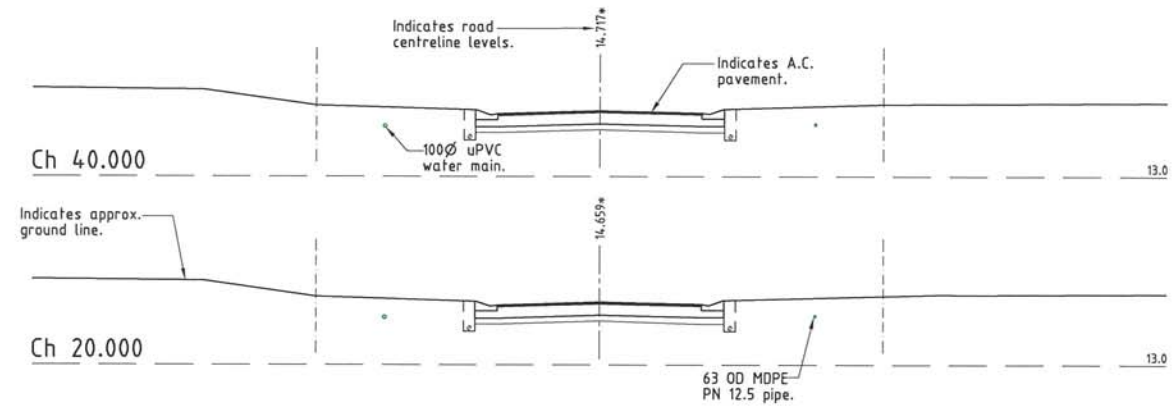
| Issue | Description | Date |
|-------|---|------------|
| B | AMENDED TO AS CONSTRUCTED. | 08/10/2014 |
| A | ISSUED FOR TENDER / CONSTRUCTION | 16/07/2012 |
| P2 | PRELIMINARY - NOT FOR CONSTRUCTION - ISSUED COUNCIL APPROVAL (OPW). | 20/04/2012 |
| P1 | PRELIMINARY - NOT FOR CONSTRUCTION - ISSUED FOR CLIENT APPROVAL & CONSULTANT INFORMATION. | 17/02/2012 |

Drawn
JHS
Date
17/02/2012
Checked
D.A.
Approved
COPYRIGHT ©

In Association With
**PARKSIDE DEVELOPMENT
PTY LTD**
STAGE 3, 32 ALLOTMENT
RESIDENTIAL SUBDIVISION
BRENDALE
TARRANGO LINK, DEERAGUN

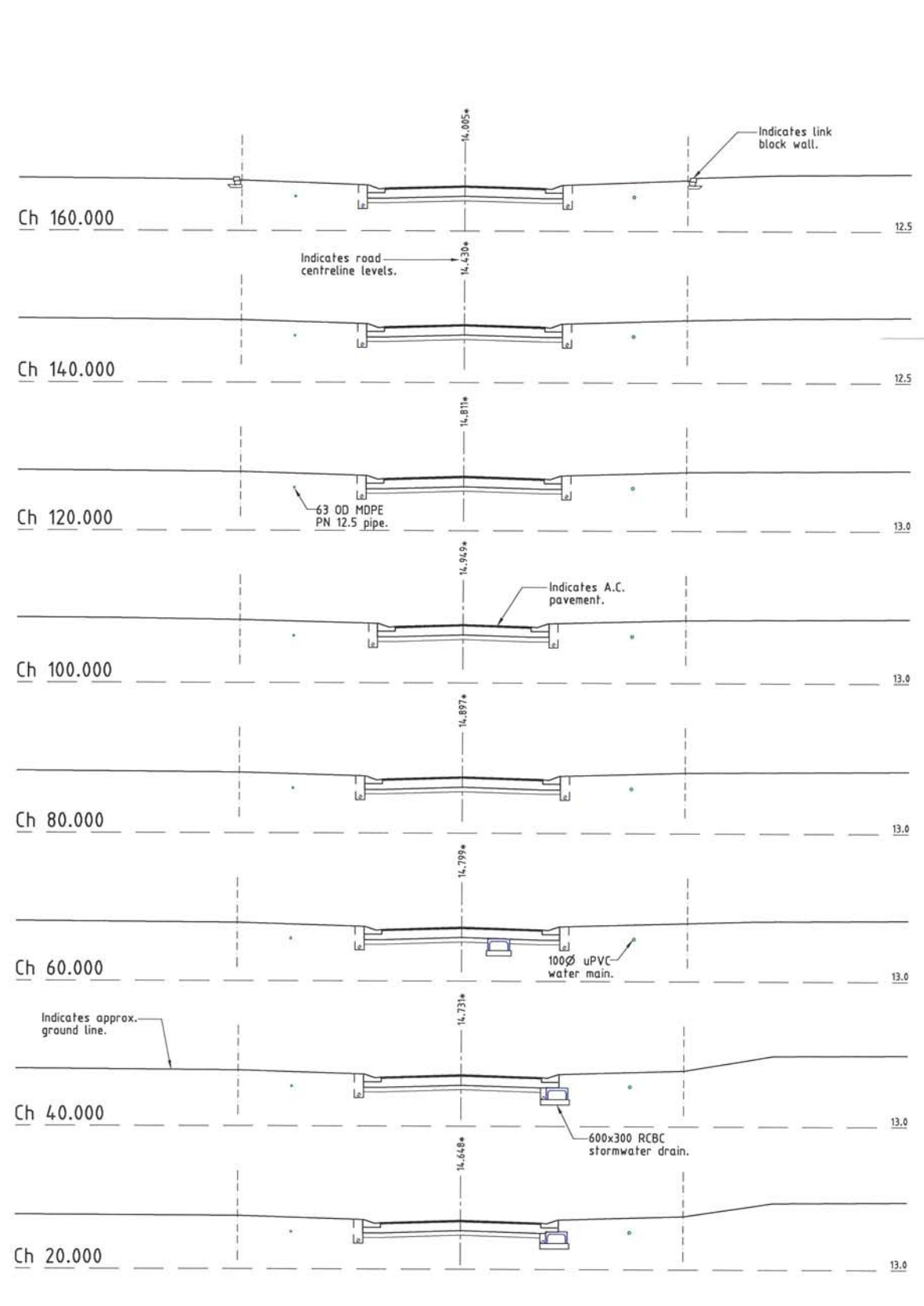
TYPICAL CROSS SECTIONS

Drawing Number
PARK0003/08
Issue
B



GOTHAM LOOP

AS CONSTRUCTED



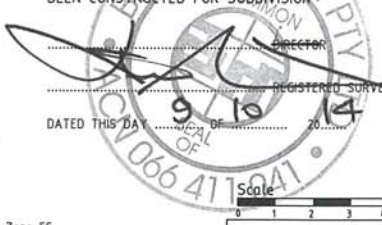
KANCOONA CROSS

CROSS SECTIONS

BRAZIER & MOTTI PTY LTD. (ACN 066 411 041), 595 FLINDERS STREET, TOWNSVILLE HEREBY CERTIFY THAT THIS DRAWING ACCURATELY AND CORRECTLY DESCRIBES AND RECORDS THE NATURE AND THE LOCATION OF THE WORKS DEPICTED BY ASTERISKS (*) HEREON AS THEY HAVE BEEN CONSTRUCTED FOR SUBDIVISION.

DATED THIS DAY 9th OF 10th MONTH 2014

REGISTERED SURVEYOR AND DIRECTOR



Scale 1:200

THE ORIGINAL OF THIS DOCUMENT IS COMPLETED TO THE SCALE NOTED. AS REPRODUCTION CAN DISTORT SIZE & SHAPE USE ONLY THE DIMENSIONS PROVIDED ON ARCHITECTURAL &/OR ENGINEERING DRAWINGS. VERIFY DIMENSIONS ON SITE BEFORE CONSTRUCTION.

All work has been carried out in accordance with LOCAL AUTHORITIES standard details.



Accepted As Constructed

REFER TO DRAWING PARK0003/08 FOR ROAD TYPICAL SECTIONS.

Civil & Structural Engineers
50 Punari Street, Currajong 4812
Phone: [07] 4725 5550 Fax: [07] 4725 5850
Email: mail@nceng.com.au
Milton Messer & Associates Pty. Ltd.
ACN 100 817 356

| | | | |
|-----------|--|---------------------|--|
| Issue | B AMENDED TO AS CONSTRUCTED. A ISSUED FOR TENDER / CONSTRUCTION P2 PRELIMINARY - NOT FOR CONSTRUCTION - ISSUED COUNCIL APPROVAL (OPW). P1 PRELIMINARY - NOT FOR CONSTRUCTION - ISSUED FOR CLIENT APPROVAL & CONSULTANT INFORMATION. | Date | 08/10/2014 16/07/2012 20/04/2012 17/02/2012 |
| Drawn | JHS | In Association With | PARKSIDE DEVELOPMENT PTY LTD |
| Date | 17/02/2012 | Description | ROAD CROSS SECTIONS |
| Checked | [Signature] | Drawing Number | PARK0003/09 |
| Approved | [Signature] | Issue | B |
| Copyright | © | | |

REAL PROPERTY DESCRIPTION

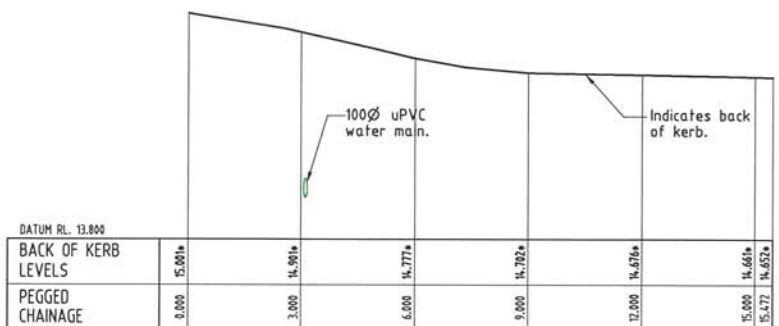
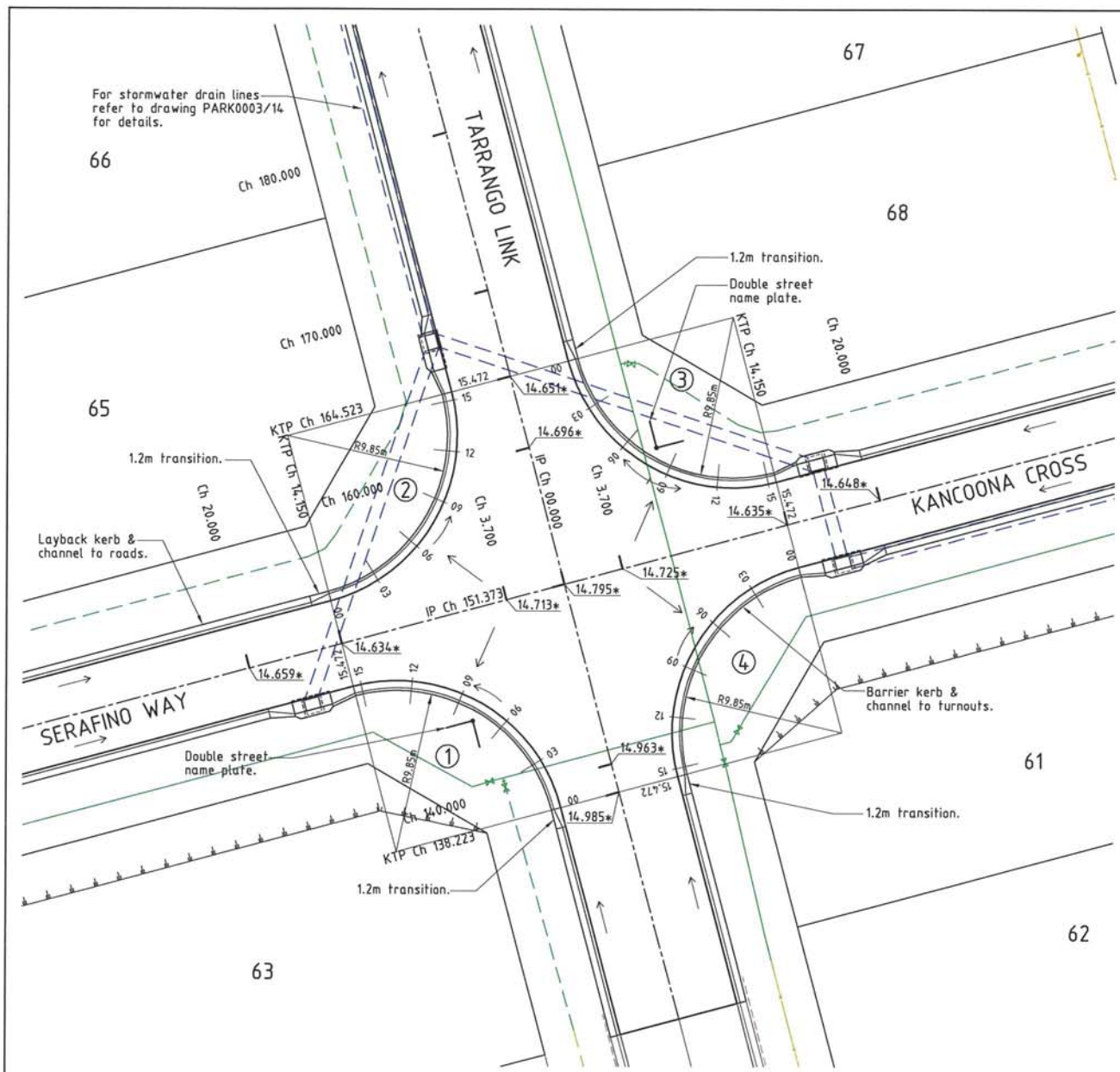
Lot 2 on SP 232875
Parish of BOHLE
County of ELPHINSTONE
Geaney Lane - Deeragun

In Association with:-

surveying | town planning | project management | mapping and GIS
Brazier Motti Pty Ltd (ACN 066 411 041)
595 Flinders St., Townsville, Q., 4810
Phone: 07 4772 1144, Fax: 07 4772 2557, Email: townsville@braziermotti.com.au

BASE SURVEY
Brazier Motti (06092/091)
TRUNCATED COORDINATES
E 0.000, N 0.000
EQUIVALENT TO
E 460000, N 7800000

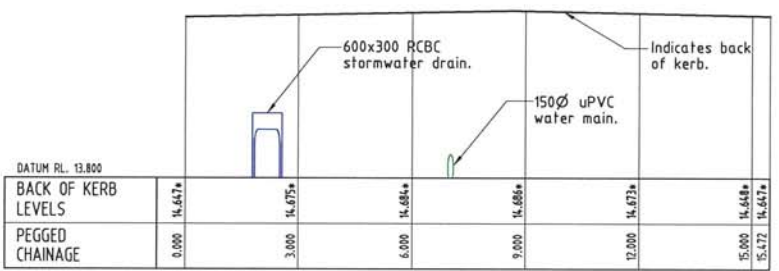
LEVEL DATUM A.H.D.
Horizontal Datum GDA' 94 Zone 55
Refer P.M. 177233 RL. 13.514
Bolt & washer in kerb.
Intersection SOMERTON/DUNDABELLA



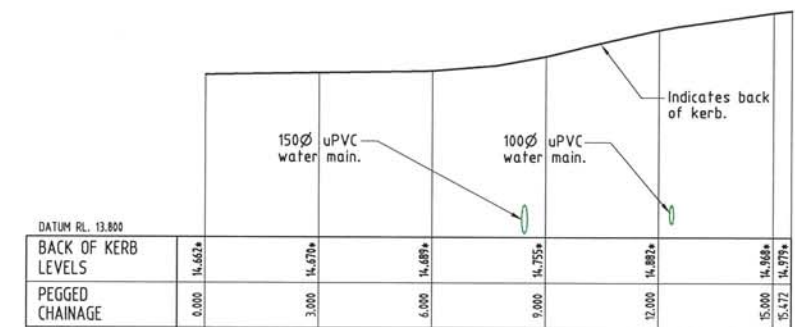
TURNOUT 1
Scale 'B' - Horizontal
Scale 'C' - Vertical



TURNOUT 2
Scale 'B' - Horizontal
Scale 'C' - Vertical



TURNOUT 3
Scale 'B' - Horizontal
Scale 'C' - Vertical



TURNOUT 4
Scale 'B' - Horizontal
Scale 'C' - Vertical

INTERSECTION LAYOUT PLAN
Scale 'A'

LONGITUDINAL SECTIONS

- LEGEND**
- GENERAL:-**
- 12.000* - As constructed surface level.
 - - Stormwater flow arrow.
 - - Top of batter.
 - - uPVC water main.
 - - Poly water main.
 - - Stormwater drain line.
 - - Subsoil drainage.
 - - Sewer main.
 - - uPVC water main.
 - - Poly water main.

AS CONSTRUCTED

BRAZIER & MOTTI PTY LTD (ACN 066 411 041), 595 FLINDERS STREET, TOWNSVILLE HEREBY CERTIFY THAT THIS DRAWING ACCURATELY AND CORRECTLY DESCRIBES AND RECORDS THE NATURE AND THE LOCATION OF THE WORKS DEPICTED BY ASTERISKS (*) HEREON AS THEY HAVE BEEN CONSTRUCTED FOR SUBDIVISION

REGISTERED SURVEYOR AND DIRECTOR

DATED THIS DAY 9/10/14 OF 2014

REAL PROPERTY DESCRIPTION

Lot 2 on SP 232875
Parish of BOHLE
County of ELPHINSTONE
Geaney Lane - Deeragun

In Association with:-

surveying | town planning | project management | mapping and GIS

Brazier Motti Pty Ltd (ACN 066 411 041)
595 Flinders St, Townsville, Q. 4810
Phone: 07 4772 1144, Fax: 07 4772 2557, Email: townsville@braziermotti.com.au

BASE SURVEY
Brazier Motti (06092/091)
TRUNCATED COORDINATES
E 0.000, N 0.000
EQUIVALENT TO
E 460000, N 7800000

LEVEL DATUM A.H.D.
Horizontal Datum GDA' 94 Zone 55
Refer P.M. 177233 RL. 13.514
Bolt & washer in kerb.
Intersection SOMERTON/DUNDABELLA

Scale 'A' 0 2 4 6 8m

Scale 'B' 0 1 2 3 4m

Scale 'C' 0 0.2 0.4 0.6 0.8m

THE ORIGINAL OF THIS DOCUMENT IS COMPLETED TO THE SCALE NOTED. AS REPRODUCTION CAN DISTORT SIZE & SHAPE USE ONLY THE DIMENSIONS PROVIDED ON ARCHITECTURAL &/OR ENGINEERING DRAWINGS. VERIFY DIMENSIONS ON SITE BEFORE CONSTRUCTION.

All work has been carried out in accordance with LOCAL AUTHORITIES standard details.

QUALITY APPROVED TO
AS/NZS 9001:2008
REGD. NUMBER 2004

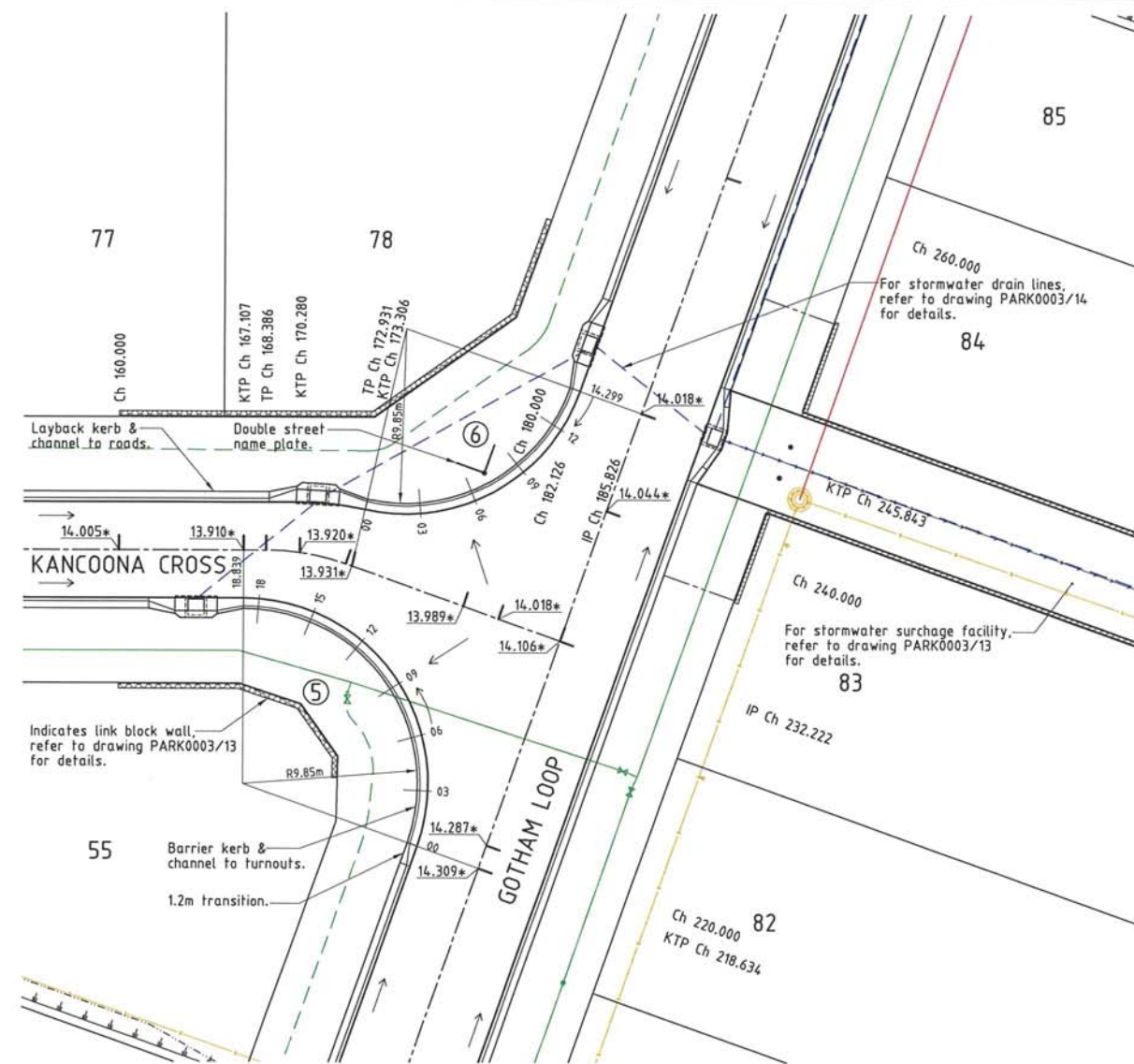
NORTHERN CONSULTING
engineers

Civil & Structural Engineers
50 Punari Street, Currajong 4812
Phone: [07] 4725 5550 Fax: [07] 4725 5850
Email: mail@nceng.com.au
Milton Messer & Associates Pty. Ltd.
ACN 100 817 356

Accepted
As Constructed

| | | | |
|-------|---|-------------|------------|
| Issue | | Description | Date |
| B | AMENDED TO AS CONSTRUCTED. | | 08/10/2014 |
| A | ISSUED FOR TENDER / CONSTRUCTION | | 16/07/2012 |
| P2 | PRELIMINARY - NOT FOR CONSTRUCTION - ISSUED COUNCIL APPROVAL (OPW). | | 28/04/2012 |
| P1 | PRELIMINARY - NOT FOR CONSTRUCTION - ISSUED FOR CLIENT APPROVAL & CONSULTANT INFORMATION. | | 17/02/2012 |

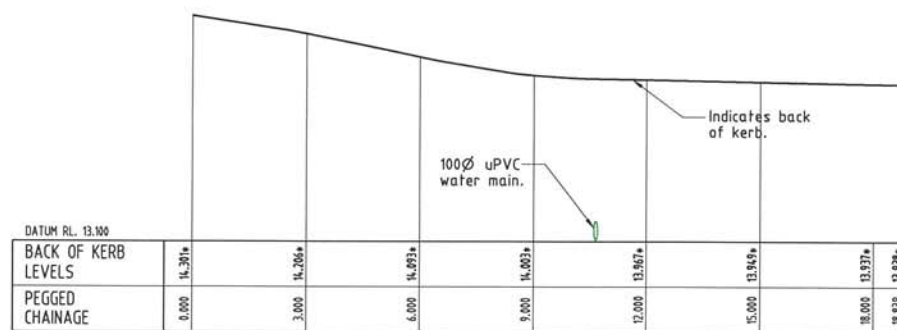
| | | | | |
|-------------|------------|---------------------|--|--------------------------------------|
| Drawn | JHS | In Association With | PARKSIDE DEVELOPMENT PTY LTD | INTERSECTION DETAILS |
| Date | 17/02/2012 | | | |
| Checked | P.A. | | STAGE 3, 32 ALLOTMENT RESIDENTIAL SUBDIVISION | Drawing Number PARK0003/10 |
| Approved | | | BRENDALE | |
| COPYRIGHT © | | | TARRANGO LINK, DEERAGUN | Issue B |



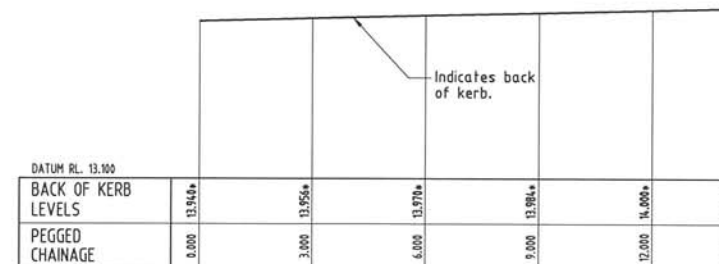
INTERSECTION LAYOUT PLAN
Scale 'A'

AS CONSTRUCTED

BRAZIER & MOTTI PTY.LTD. (ACN 066 411 041), 595 FLINDERS STREET, TOWNSVILLE HEREBY CERTIFY THAT THIS DRAWING ACCURATELY AND CORRECTLY DESCRIBES AND RECORDS THE NATURE AND THE LOCATION OF THE WORKS DEPICTED BY ASTERISKS (*) HEREON AS THEY HAVE BEEN CONSTRUCTED FOR SUBDIVISION



TURNOUT 5
Scale 'B' - Horizontal
Scale 'C' - Vertical



TURNOUT 6
Scale 'B' - Horizontal
Scale 'C' - Vertical

LONGITUDINAL SECTIONS

LEGEND

GENERAL:-

- 12.000* - As constructed surface level.
- - Stormwater flow arrow.
- - Top of batter.
- - Toe of batter.
- - Change of grade.
- - Invert of drain.
- - Sewer main.
- - uPVC water main.
- - Poly water main.
- - Stormwater drain line.
- - Sewer man.
- - Sewer manhole.



REAL PROPERTY DESCRIPTION

Lot 2 on SP 232875
Parish of BOHLE
County of ELPHINSTONE
Geaney Lane - Deeragun

In Association with:-

surveying | town planning | project management | mapping and GIS

Brazier Motti Pty Ltd (ACN 066 411 041)
595 Flinders St, Townsville, Q, 4810
Phone: 07 4772 1144, Fax: 07 4772 2557, Email: townsville@braziermotti.com.au

BASE SURVEY
Brazier Motti (06092/091)
TRUNCATED COORDINATES
E 46000, N 0.000
EQUIVALENT TO
E 460000, N 7800000

LEVEL DATUM A.H.D.
Horizontal Datum GDA' 94 Zone 55
Refer P.M. 177233 RL. 13.514
Bolt & washer in kerb.
Intersection SOMERTON/DUNDABELLA

Scale 'A' 0 2 4 6 m

Scale 'B' 0 1 2 3 4m

Scale 'C' 0 0.2 0.4 0.6 0.8m

THE ORIGINAL OF THIS DOCUMENT IS COMPLETED TO THE SCALE NOTED.
AS REPRODUCTION CAN DISTORT SIZE & SHAPE USE ONLY THE DIMENSIONS PROVIDED ON ARCHITECTURAL &/OR ENGINEERING DRAWINGS.
VERIFY DIMENSIONS ON SITE BEFORE CONSTRUCTION.

All work has been carried out in accordance with LOCAL AUTHORITIES standard details.



NORTHERN CONSULTING
engineers

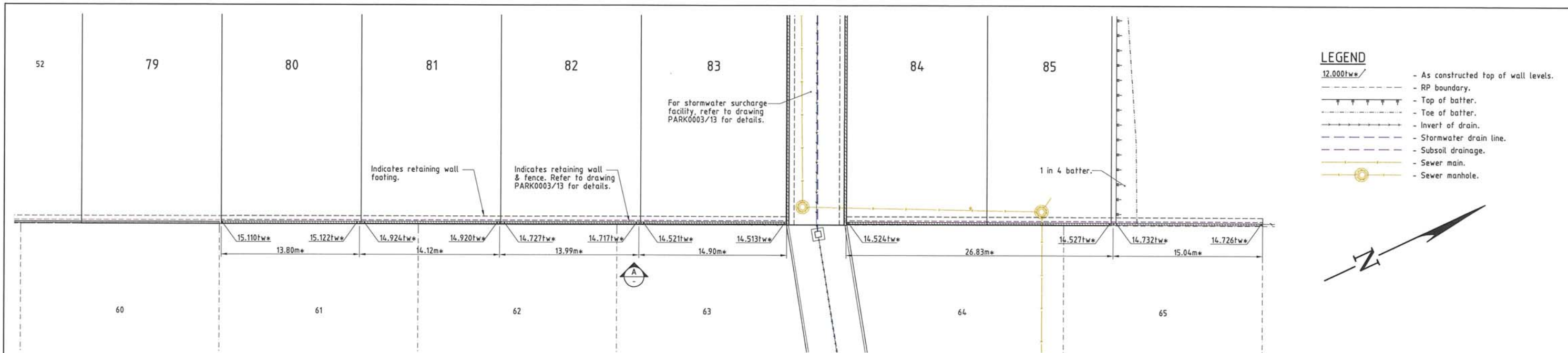
Civil & Structural Engineers
50 Punari Street, Currajong 4812
Phone: [07] 4725 5550 Fax: [07] 4725 5850
Email: mail@nceng.com.au
Milton Messer & Associates Pty. Ltd.
ACN 100 817 356

Accepted
As Constructed

| Issue | Description | Date |
|-------|---|------------|
| B | AMENDED TO AS CONSTRUCTED. | 08/10/2014 |
| A | ISSUED FOR TENDER / CONSTRUCTION | 16/07/2012 |
| P2 | PRELIMINARY - NOT FOR CONSTRUCTION - ISSUED COUNCIL APPROVAL (OPW). | 20/04/2012 |
| P1 | PRELIMINARY - NOT FOR CONSTRUCTION - ISSUED FOR CLIENT APPROVAL & CONSULTANT INFORMATION. | 17/02/2012 |

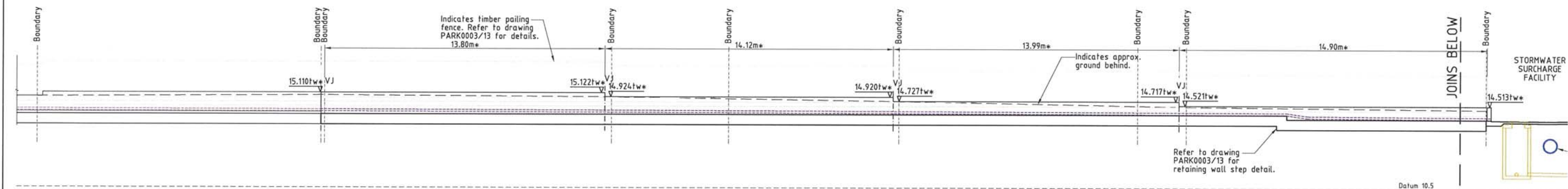
| Drawn | In Association With | INTERSECTION & SLOW POINT DETAILS |
|------------|--|-----------------------------------|
| JHS | PARKSIDE DEVELOPMENT PTY LTD | |
| Date | STAGE 3, 32 ALLOTMENT RESIDENTIAL SUBDIVISION | |
| 17/02/2012 | BRENDALE | |
| Checked | TARRANGO LINK, DEERAGUN | |
| Approved | | |
| Copyright | | |

| Drawing Number | Issue |
|--------------------|----------|
| PARK0003/11 | B |

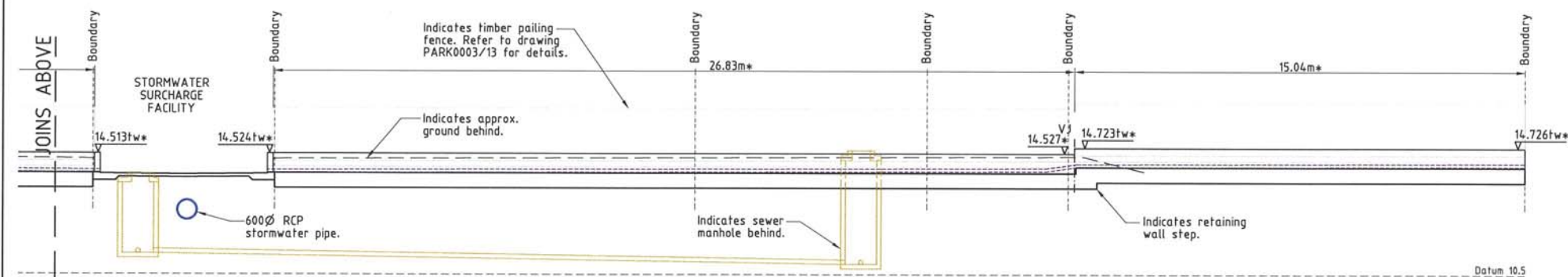


- LEGEND**
- 12.000tw* - As constructed top of wall levels.
 - RP boundary.
 - Top of batter.
 - Toe of batter.
 - Invert of drain.
 - Stormwater drain line.
 - Subsoil drainage.
 - Sewer main.
 - Sewer manhole.

LAYOUT PLAN
Scale 'A'



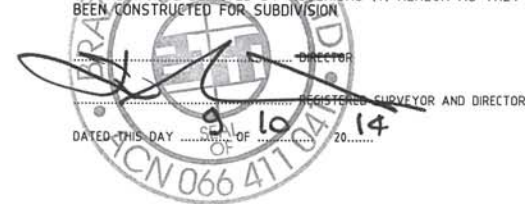
ELEVATION A
Scale 'B'



ELEVATION A
Scale 'B'

AS CONSTRUCTED

BRAZIER & MOTTI PTY LTD (ACN 066 411 041), 595 FLINDERS STREET, TOWNSVILLE HEREBY CERTIFY THAT THIS DRAWING ACCURATELY AND CORRECTLY DESCRIBES AND RECORDS THE NATURE AND THE LOCATION OF THE WORKS DEPICTED BY ASTERISKS (*) HEREON AS THEY HAVE BEEN CONSTRUCTED FOR SUBDIVISION



REAL PROPERTY DESCRIPTION

Lot 2 on SP 232875
Parish of BOHLE
County of ELPHINSTONE
Geaney Lane - Deeragun

In Association with:-

surveying | town planning | project management | mapping and GIS

Brazier Motti Pty Ltd (ACN 066 411 041)
595 Flinders St, Townsville, Q. 4810
Phone: 07 4772 1144, Fax: 07 4772 2557, Email: townsvill@braziermotti.com.au

BASE SURVEY
Brazier Motti (06092/091)
TRUNCATED COORDINATES
E 0.000, N 0.000
EQUIVALENT TO
E 460000, N 7800000

LEVEL DATUM A.H.D.
Horizontal Datum GDA' 94 Zone 55
Refer P.M. 17233 RL. 13.514
Bolt & washer in kerb.
Intersection SOMERTON/DUNDABELLA



THE ORIGINAL OF THIS DOCUMENT IS COMPLETED TO THE SCALE NOTED.
AS REPRODUCTION CAN DISTORT SIZE & SHAPE USE ONLY THE DIMENSIONS PROVIDED ON ARCHITECTURAL &/OR ENGINEERING DRAWINGS.
VERIFY DIMENSIONS ON SITE BEFORE CONSTRUCTION.

All work has been carried out in accordance with LOCAL AUTHORITIES standard details.



Civil & Structural Engineers
50 Punari Street, Currajong 4812
Phone: [07] 4725 5550 Fax: [07] 4725 5850
Email: mail@nceng.com.au
Milton Messer & Associates Pty. Ltd.
ACN 100 817 356

**Accepted
As Constructed**

| Issue | Description | Date |
|-------|---|------------|
| B | AMENDED TO AS CONSTRUCTED. | 08/10/2014 |
| A | ISSUED FOR TENDER / CONSTRUCTION | 16/07/2012 |
| P2 | PRELIMINARY - NOT FOR CONSTRUCTION - ISSUED COUNCIL APPROVAL (OPW). | 20/04/2012 |
| P1 | PRELIMINARY - NOT FOR CONSTRUCTION - ISSUED FOR CLIENT APPROVAL & CONSULTANT INFORMATION. | 17/02/2012 |

| Drawn | In Association With | RETAINING WALL LAYOUT & ELEVATIONS PLAN |
|-------------|--|---|
| JHS | PARKSIDE DEVELOPMENT PTY LTD | |
| Date | STAGE 3, 32 ALLOTMENT RESIDENTIAL SUBDIVISION | |
| 17/02/2012 | BRENDALE | |
| Checked | TARRANGO LINK, DEERAGUN | |
| Approved | | |
| COPYRIGHT © | | |

| Drawing Number | Issue |
|--------------------|----------|
| PARK0003/12 | B |