

- LEGEND**
- 2/1 - Pit No. 2/Drainline No. 1
  - 12.000e - Surface levels.
  - 12.000\* - Surface levels.
  - Q50 WSL 13.48 - Q50 water surface levels.
  - - Stormwater flow arrow.
  - - - - - RP boundary.
  - - - - - Top of batter.
  - - - - - Toe of batter.
  - - - - - Stormwater drain line.
  - - - - - Subsoil drain.
  - - - - - Stormwater drain line.
  - - - - - Fence.

**NOTES:**

- All Q50 flows remain within the road reserve & open drain boundaries.

**AS CONSTRUCTED**

BRAZIER & MOTTI PTY.LTD. (ACN 066 411 041), 595 FLINDERS STREET, TOWNSVILLE HEREBY CERTIFY THAT THIS DRAWING ACCURATELY AND CORRECTLY DESCRIBES AND RECORDS THE NATURE AND THE LOCATION OF THE WORKS DEPICTED BY ASTERISKS (\*) HEREON AS THEY HAVE BEEN CONSTRUCTED FOR SUBDIVISION



**Q50 STORMWATER LEVELS**

Road Name	Chainage	Description	Q50 Level	Q100 Level
GOTHAM LOOP	41.324	Pit 8/2	14.64	14.64
	67.452	Pit 7/2	14.56	14.57
	74.901	Pit 6/2	14.52	14.52
	118.195	Pit 1/7	14.43	14.44
	145.325	Pit 2/6	14.45	14.46
BARWICK MEWS	28.815	Pit 3/2	14.22	14.23
	43.583	Pit 2/5	14.14	14.15
	70.965	Pit 2/2	14.07	14.08
	109.218	Pit 1/4	14.08	14.08
	117.393	Pit 2/4	14.13	14.15
Overland Outlet		Pit 1/2	13.99	14.00

**REAL PROPERTY DESCRIPTION**

Lot 2 on SP 232875  
Parish of BOHLE  
County of ELPHINSTONE  
Geaney Lane - Deeragun

In Association with:-

surveying | town planning | project management | mapping and GIS

Brazier Motti Pty Ltd (ACN 066 411 041)  
595 Flinders St, Townsville, Q. 4810  
Phone: 07 4772 1144, Fax: 07 4772 2557, Email: townsville@braziermotti.com.au

BASE SURVEY  
Brazier Motti (06092/091)  
TRUNCATED COORDINATES  
E: 0.000, N: 0.000  
EQUIVALENT TO  
E: 460000, N: 7800000

LEVEL DATUM A.H.D.  
Horizontal Datum GDA' 94 Zone 55  
Refer P.M. 177233 RL: 13.514  
Bolt & washer in kerb.  
Intersection SOMERTON/DUNDELLA

Scale 0 5 10 15 20m

THE ORIGINAL OF THIS DOCUMENT IS COMPLETED TO THE SCALE NOTED. AS REPRODUCTION CAN DISTORT SIZE & SHAPE USE ONLY THE DIMENSIONS PROVIDED ON ARCHITECTURAL &/OR ENGINEERING DRAWINGS. VERIFY DIMENSIONS ON SITE BEFORE CONSTRUCTION.

**LAYOUT PLAN**

\* - Indicates as constructed information.

All work is to be carried out in accordance with LOCAL AUTHORITIES standard details.

REFER TO DRAWING PARK002/06 FOR ROAD TYPICAL SECTIONS.

Civil & Structural Engineers  
50 Punari Street, Currajong 4812  
Phone: 07 4725 5550 Fax: 07 4725 5850  
Email: mail@nceng.com.au  
Milton Messer & Associates Pty. Ltd.  
ACN 100 817 356

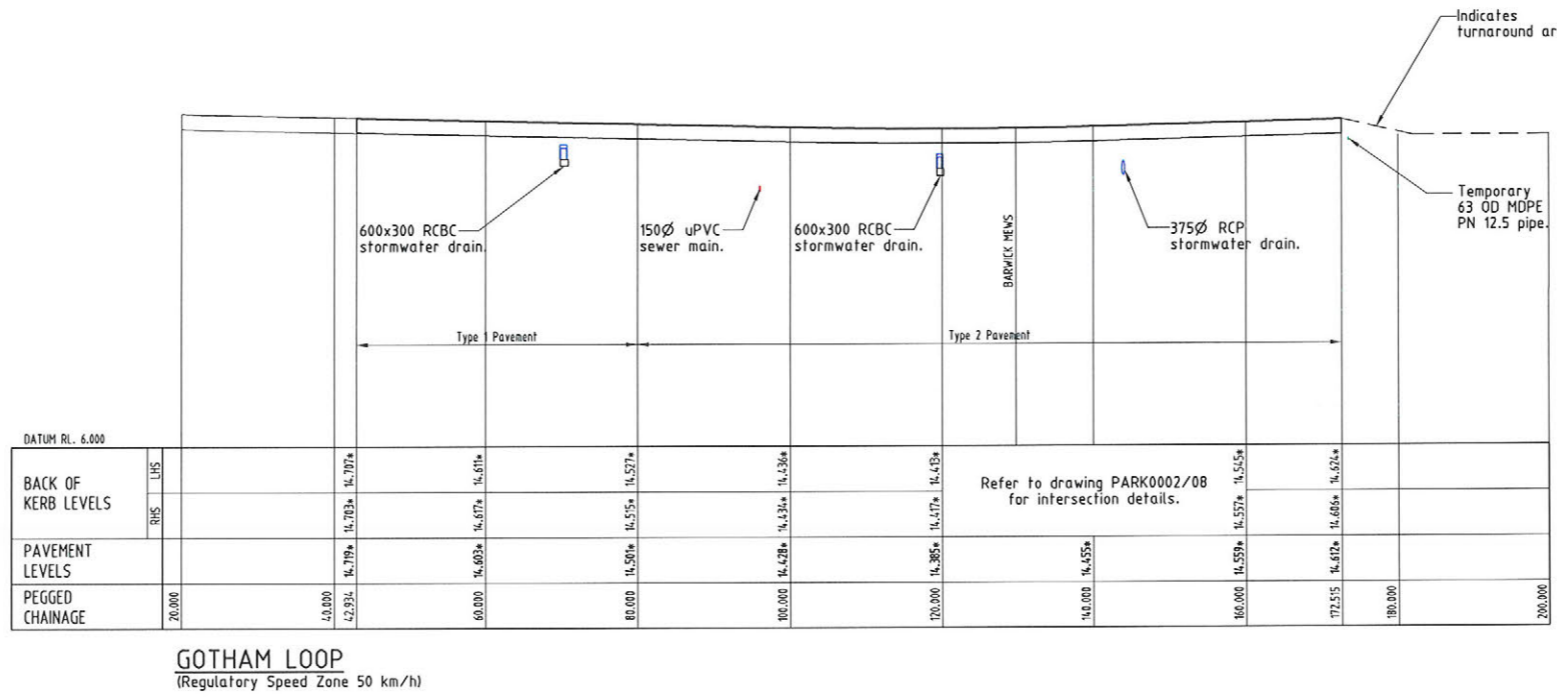
Issue	Description	Date
D	AS CONSTRUCTED - STAGE 2 REVISION C - REAR LOT LEVELS OF LOTS 44-52 AMENDED.	17/09/2012
C	AS CONSTRUCTED - BW2A (22 LOTS) REVISION B	05/07/2012
B	PEDESTRIAN PATHWAY AMENDED & KERB RAMP ADDED.	17/01/2012
A	ISSUED FOR CONSTRUCTION	08/12/2011
P3	PRELIMINARY - NOT FOR CONSTRUCTION - AMENDED TO COUNCIL R.O.L. NOTICE - ISSUED FOR COUNCIL APPROVAL (OPW).	23/08/2011
P2	PRELIMINARY - NOT FOR CONSTRUCTION - ISSUED FOR COUNCIL APPROVAL (OPW).	21/07/2011
P1	PRELIMINARY - NOT FOR CONSTRUCTION - ISSUED FOR COUNCIL APPROVAL (OPW).	11/07/2011

Drawn	JHS	In Association With	PARKSIDE DEVELOPMENT PTY LTD	LAYOUT PLAN, ROADWORKS & STORMWATER
Date	11/07/2011	Checked		
Approved		Approved	BRENDALE WEST	Drawing Number
COPYRIGHT ©			GOTHAM LOOP, DEERAGUN	PARK002/03
				Issue
				D

**ACCEPTED AS CONSTRUCTED**

PAVEMENT TABLE

PAVEMENT TYPE	UNBOUND PAVEMENT DESCRIPTION
TYPE 1	30mm DG10 Prime & Seal 100mm Base Type 2.1 CBR80 (approved alternate Type 2.3) 100mm Sub-base Type 2.3 CBR45 140mm Lower Sub-base. Min CBR10. 200mm Improved Sub-grade. Min CBR10.
TYPE 2	30mm DG10 Prime & Seal 100mm Base Type 2.1 CBR80 (approved alternate Type 2.3) 100mm Sub-base Type 2.3 CBR45 140mm Lower Sub-base. Min CBR10. 150mm Improved Sub-grade. Min CBR10.



**AS CONSTRUCTED**

BRAZIER & MOTTI PTY.LTD. (ACN 066 411 041), 595 FLINDERS STREET, TOWNSVILLE HEREBY CERTIFY THAT THIS DRAWING ACCURATELY AND CORRECTLY DESCRIBES AND RECORDS THE NATURE AND THE LOCATION OF THE WORKS DEPICTED BY ASTERISKS (\*) HEREON AS THEY HAVE BEEN CONSTRUCTED FOR SUBDIVISION

..... DIRECTOR  
..... REGISTERED SURVEYOR AND DIRECTOR

DATED THIS DAY 5 OF JULY 2012

SEAL OF  
ACN 066 411 041

LONGITUDINAL SECTIONS

Scale 'A' - Horizontal  
Scale 'B' - Vertical

**ACCEPTED  
AS CONSTRUCTED**

REAL PROPERTY DESCRIPTION

Lot 2 on SP 232875  
Parish of BOHLE  
County of ELPHINSTONE  
Geaney Lane - Deeragun

In Association with:-

surveying | town planning | project management | mapping and GIS

Brazier Motti Pty Ltd (ACN 066 411 041)  
595 Flinders St, Townsville, Q., 4810  
Phone: 07 4772 1144, Fax: 07 4772 2557, Email: townsville@braziermotti.com.au

BASE SURVEY  
Brazier Motti (06092/091)  
TRUNCATED COORDINATES  
E 0.000, N 0.000  
EQUIVALENT TO  
E 460000, N 7800000

LEVEL DATUM A.H.D.  
Horizontal Datum GDA' 94 Zone 55  
Refer P.M. 177233 RL. 13.514  
Bolt & washer in kerb.  
Intersection SOMERTON/DUNDABELLA

Scale 'A' 0 5 10 15 20m  
Scale 'B' 0 1 2 3 4m

THE ORIGINAL OF THIS DOCUMENT IS COMPLETED TO THE SCALE NOTED. AS REPRODUCTION CAN DISTORT SIZE & SHAPE USE ONLY THE DIMENSIONS PROVIDED ON ARCHITECTURAL &/OR ENGINEERING DRAWINGS. VERIFY DIMENSIONS ON SITE BEFORE CONSTRUCTION.

\* - Indicates as constructed information.

All work is to be carried out in accordance with LOCAL AUTHORITIES standard details.

REFER TO DRAWING PARK0002/06 FOR ROAD TYPICAL SECTIONS.

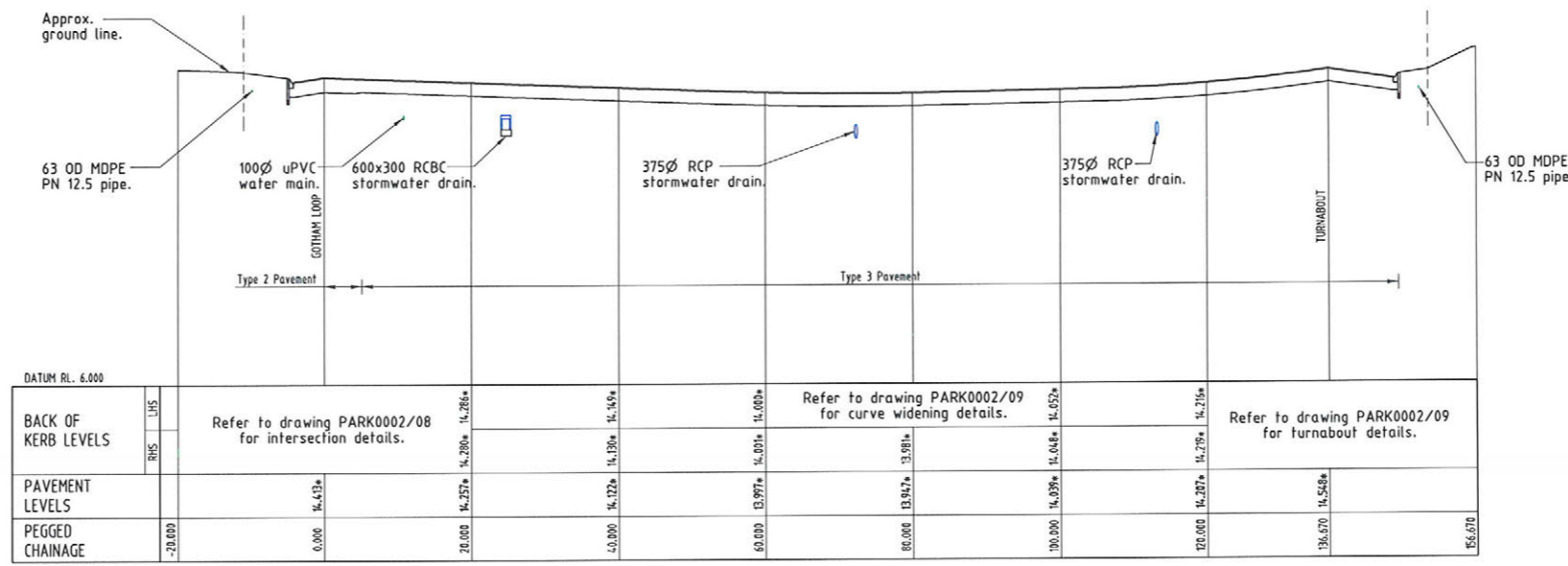
Civil & Structural Engineers  
50 Punari Street, Currajong 4812  
Phone: 07 4725 5550 Fax: 07 4725 5850  
Email: mail@nceng.com.au  
Milton Messer & Associates Pty. Ltd.  
ACN 100 817 356

Issue	Description	Date
C	AS CONSTRUCTED - BW2A (22 LOTS) REVISION B	05/07/2012
B	PRELIMINARY - AS CONSTRUCTED - BW2A (22 LOTS) REVISION A	21/06/2012
A	ISSUED FOR CONSTRUCTION	08/12/2011
P2	PRELIMINARY - NOT FOR CONSTRUCTION - ISSUED FOR COUNCIL APPROVAL (OPW).	21/07/2011
P1	PRELIMINARY - NOT FOR CONSTRUCTION - ISSUED FOR COUNCIL APPROVAL (OPW).	11/07/2011

Drawn JHS Date 11/07/2011	In Association With <b>PARKSIDE DEVELOPMENT PTY LTD</b>	<b>ROAD LONGITUDINAL SECTION</b>
Checked Approved	STAGE 2, 31 ALLOTMENT RESIDENTIAL SUBDIVISION BREDALE WEST GOTHAM LOOP, DEERAGUN	
COPYRIGHT ©		Drawing Number <b>PARK0002/04</b>
		Issue <b>C</b>

PAVEMENT TABLE

PAVEMENT TYPE	UNBOUND PAVEMENT DESCRIPTION
TYPE 2	30mm DG10 Prime & Seal 100mm Base Type 2.1 CBR80 (approved alternate Type 2.3) 100mm Sub-base Type 2.3 CBR45 140mm Lower Sub-base. Min CBR10. 150mm Improved Sub-grade. Min CBR10.
TYPE 3	30mm DG10 Prime & Seal 100mm Base Type 2.1 CBR80 (approved alternate Type 2.3) 145mm Sub-base Type 2.3 CBR45 150mm Improved Sub-grade. Min CBR10.



BARWICK MEWS  
(Regulatory Speed Zone 50 km/h)

AS CONSTRUCTED

BRAZIER & MOTTI PTY.LTD. (ACN 066 411 041), 595 FLINDERS STREET, TOWNSVILLE HEREBY CERTIFY THAT THIS DRAWING ACCURATELY AND CORRECTLY DESCRIBES AND RECORDS THE NATURE AND THE LOCATION OF THE WORKS DEPICTED BY ASTERISKS (\*) HEREON AS THEY HAVE BEEN CONSTRUCTED FOR SUBDIVISION

DIRECTOR  
REGISTERED SURVEYOR AND DIRECTOR  
DATED THIS DAY 5 OF JULY 2012  
SEAL OF  
ACN 066 411 041

LONGITUDINAL SECTIONS

Scale 'A' - Horizontal  
Scale 'B' - Vertical

REAL PROPERTY DESCRIPTION

Lot 2 on SP 232875  
Parish of BOHLE  
County of ELPHINSTONE  
Geaney Lane - Deeragun

**ACCEPTED  
AS CONSTRUCTED**

In Association with:-  
**brazier motti**  
surveying | town planning | project management | mapping and GIS  
Brazier Motti Pty Ltd (ACN 066 411 041)  
595 Flinders St, Townsville, Q. 4810  
Phone: 07 4772 1144, Fax: 07 4772 2557, Email: townsville@braziermotti.com.au

BASE SURVEY  
Brazier Motti (06092/091)  
TRUNCATED COORDINATES  
E 0.000, N 0.000  
EQUIVALENT TO  
E 460000, N 7800000

LEVEL DATUM A.H.D.  
Horizontal Datum GDA' 94 Zone 55  
Refer P.M. 177233 RL. 13.514  
Bolt & washer in kerb.  
Intersection SOMERTON/DUNDABELLA

Scale 'A' 0 5 10 15 20m  
Scale 'B' 0 1 2 3 4m  
THE ORIGINAL OF THIS DOCUMENT IS COMPLETED TO THE SCALE NOTED. AS REPRODUCTION CAN DISTORT SIZE & SHAPE USE ONLY THE DIMENSIONS PROVIDED ON ARCHITECTURAL &/OR ENGINEERING DRAWINGS. VERIFY DIMENSIONS ON SITE BEFORE CONSTRUCTION.

\* - Indicates as constructed information.

All work is to be carried out in accordance with LOCAL AUTHORITIES standard details.

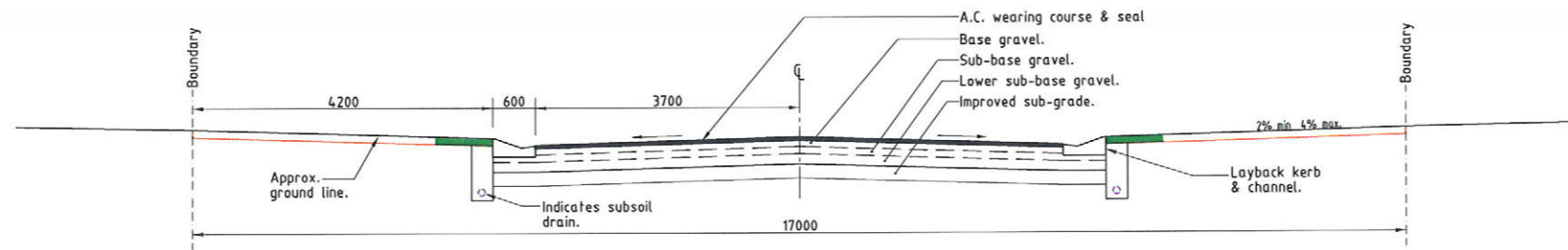
REFER TO DRAWING PARK0002/06 FOR ROAD TYPICAL SECTIONS.

**NORTHERN CONSULTING** engineers  
Civil & Structural Engineers  
50 Punari Street, Currajong 4812  
Phone: 07 4725 5550 Fax: 07 4725 5850  
Email: mail@nceng.com.au  
Milton Messer & Associates Pty. Ltd.  
ACN 100 817 956

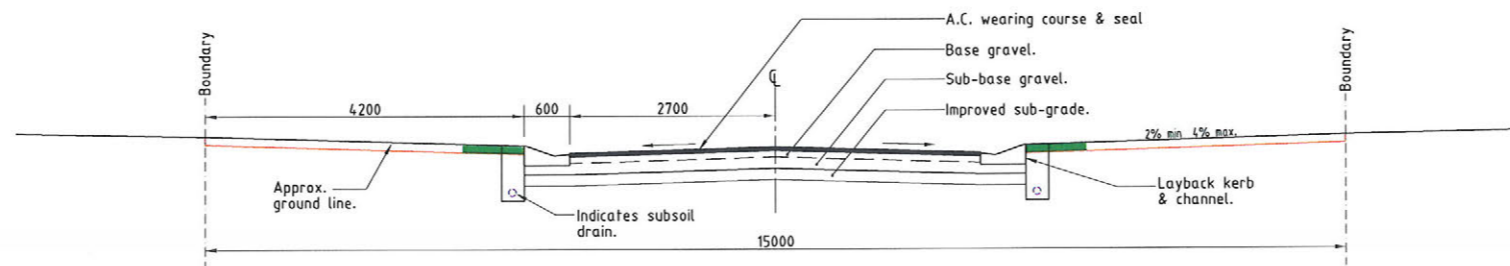
Issue	Description	Date
C	AS CONSTRUCTED - BW2A (22 LOTS) REVISION B	05/07/2012
B	PRELIMINARY - AS CONSTRUCTED - BW2A (22 LOTS) REVISION A	21/06/2012
A	ISSUED FOR CONSTRUCTION.	08/12/2011
P2	PRELIMINARY - NOT FOR CONSTRUCTION - ISSUED FOR COUNCIL APPROVAL (OPW).	21/07/2011
P1	PRELIMINARY - NOT FOR CONSTRUCTION - ISSUED FOR COUNCIL APPROVAL (OPW).	11/07/2011

Drawn	In Association With	Description	Date
JHS	PARKSIDE DEVELOPMENT PTY LTD	ROAD LONGITUDINAL SECTION	11/07/2011
Checked	STAGE 2, 31 ALLOTMENT RESIDENTIAL SUBDIVISION		
Approved	BRENDALE WEST		
COPYRIGHT ©	GOHAM LOOP, DEERAGUN		

Drawing Number	Issue
PARK0002/05	C



TYPICAL SECTION - GOTHAM LOOP



TYPICAL SECTION - BARWICK MEWS

**AS CONSTRUCTED**

Northern Consulting Engineers hereby certify that the works detailed on this drawing have been constructed to the dimensions and levels detailed.

*[Signature]*  
 Date: 5-7-12  
 Derek Robert Conley Saw

REAL PROPERTY DESCRIPTION

Lot 2 on SP 232875  
 Parish of BOHLE  
 County of ELPHINSTONE  
 Geaney Lane - Deeragun

**ACCEPTED  
 AS CONSTRUCTED**

In Association with:-

**brazier motti**  
 surveying | town planning | project management | mapping and GIS  
 Brazier Motti Pty Ltd (ACN 066 411 041)  
 595 Flinders St, Townsville, Q. 4810  
 Phone: 07 4772 1144, Fax: 07 4772 2557, Email: townsville@braziermotti.com.au

BASE SURVEY  
 Brazier Motti (06092/091)  
 TRUNCATED COORDINATES  
 F 0.000, N 0.000  
 EQUIVALENT TO  
 E 460000, N 7800000

LEVEL DATUM A.H.D.  
 Horizontal Datum GDA' 94 Zone 55  
 Refer P.M. 177233 RL. 13.514  
 Bolt & washer in kerb  
 Intersection SOMERTON/DUNDABELLA



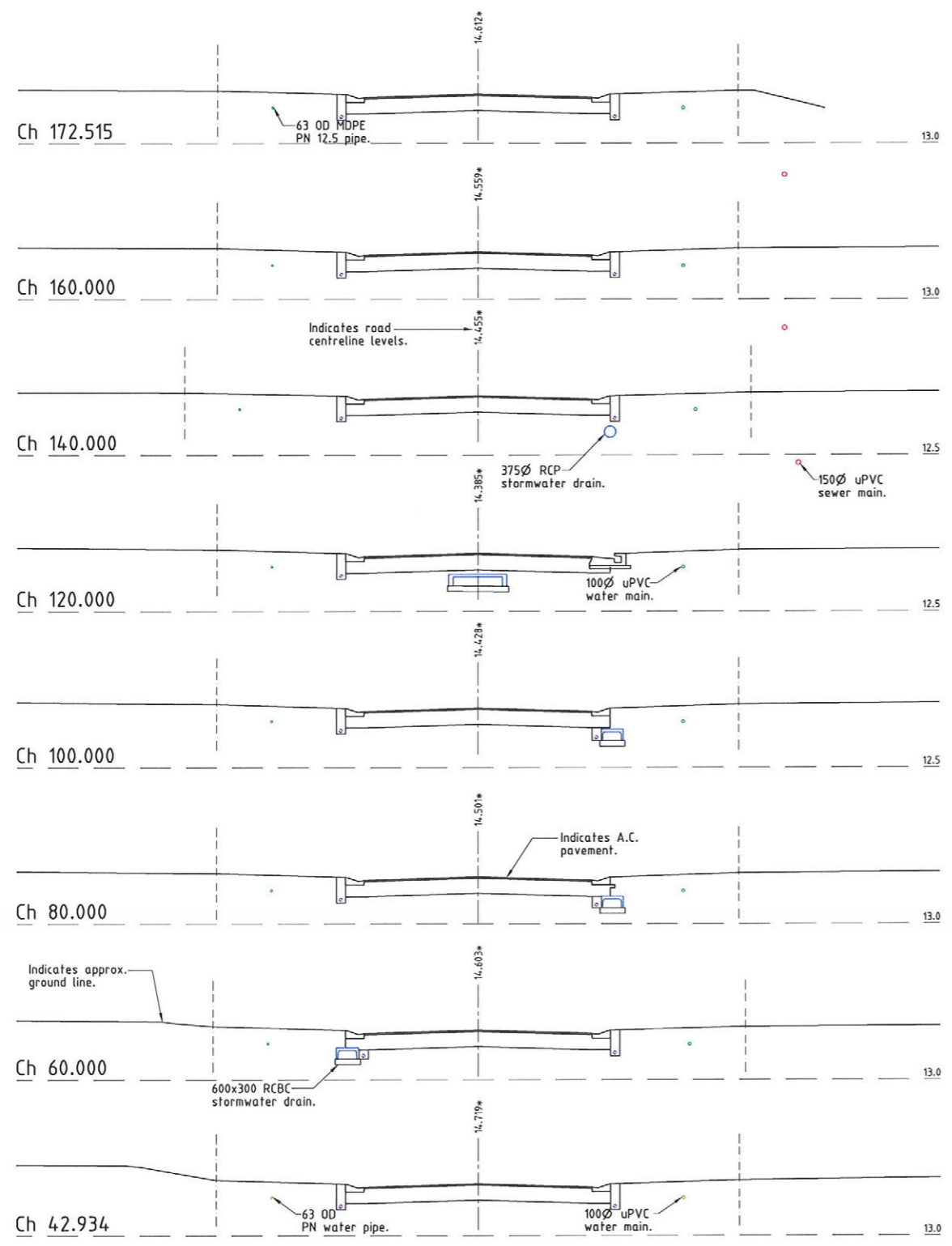
THE ORIGINAL OF THIS DOCUMENT IS COMPLETED TO THE SCALE NOTED.  
 AS REPRODUCTION CAN DISTORT SIZE & SHAPE USE ONLY THE  
 DIMENSIONS PROVIDED ON ARCHITECTURAL &/OR ENGINEERING DRAWINGS.  
 VERIFY DIMENSIONS ON SITE BEFORE CONSTRUCTION.

All work is to be carried out in accordance with LOCAL AUTHORITIES standard details.

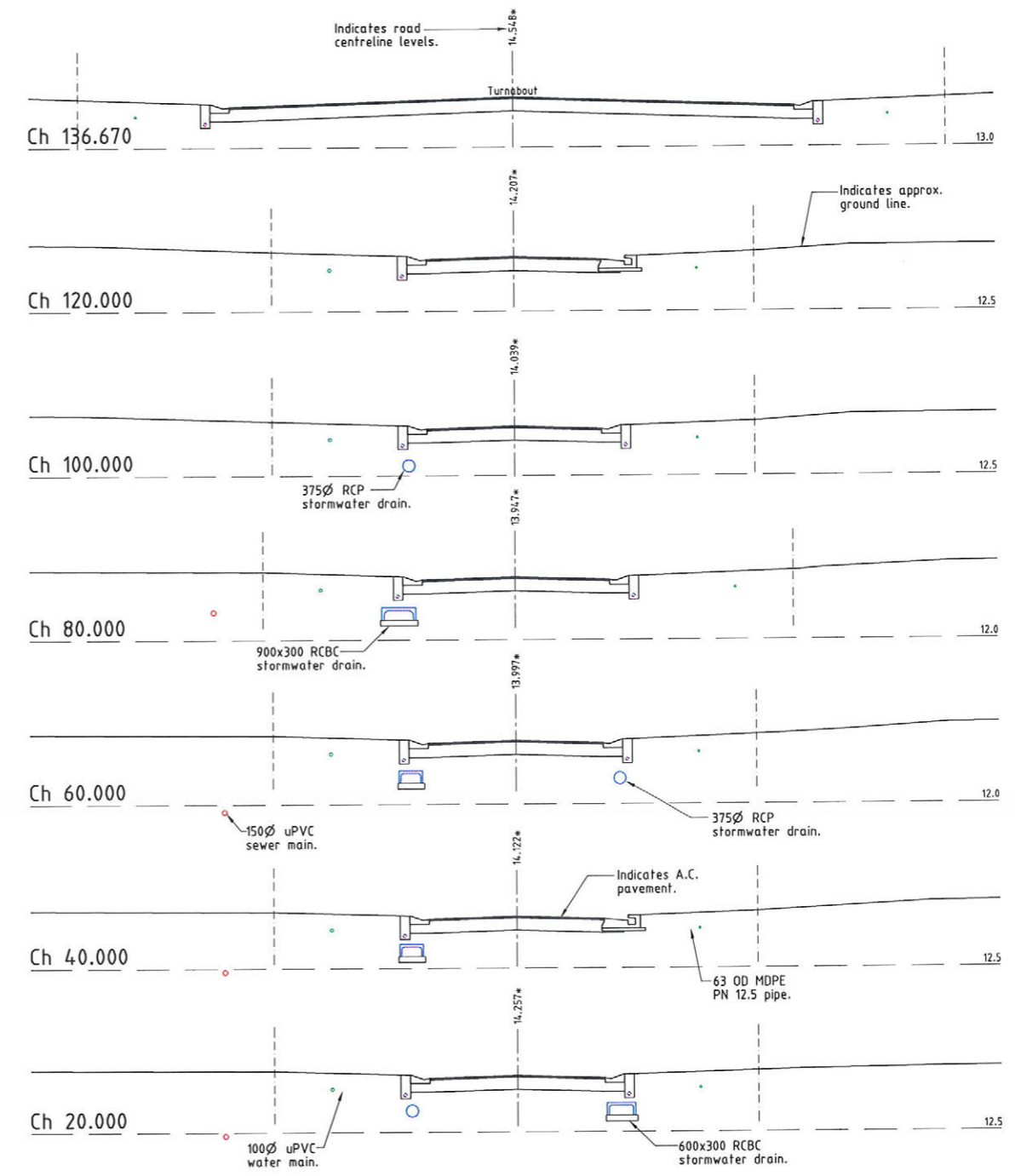
**NORTHERN CONSULTING**  
 engineers

Civil & Structural Engineers  
 50 Punari Street, Currajong 4812  
 Phone: 07 4725 5550 Fax: 07 4725 5850  
 Email: mail@nceng.com.au  
 Milton Messer & Associates Pty. Ltd.  
 ACN 100 817 356

C	AS CONSTRUCTED - BW2A (22 LOTS) REVISION B	05/07/2012
B	PRELIMINARY - AS CONSTRUCTED - BW2A (22 LOTS) REVISION A	21/06/2012
A	ISSUED FOR CONSTRUCTION	08/12/2011
P1	PRELIMINARY - NOT FOR CONSTRUCTION - ISSUED FOR COUNCIL APPROVAL (OPW).	11/07/2011
Issue	Description	Date
Drawn JHS Date 11/07/2011	In Association With <b>PARKSIDE DEVELOPMENT PTY LTD</b>	ROAD TYPICAL SECTIONS
Checked AS Approved	STAGE 2, 31 ALLOTMENT RESIDENTIAL SUBDIVISION BRENDALE WEST GOTHAM LOOP, DEERAGUN	
COPYRIGHT ©		Drawing Number <b>PARK0002/06</b>
		Issue <b>C</b>



**GOTHAM LOOP**



**BARWICK MEWS** **ACCEPTED AS CONSTRUCTED**

**CROSS SECTIONS**

\* - Indicates as constructed information.

All work is to be carried out in accordance with LOCAL AUTHORITIES standard details.

REFER TO DRAWING PARK0002/06 FOR ROAD TYPICAL SECTIONS.

**REAL PROPERTY DESCRIPTION**

Lot 2 on SP 232875  
Parish of BOHLE  
County of ELPHINSTONE  
Geaney Lane - Deeragun

In Association with:-



surveying | town planning | project management | mapping and GIS  
Brazier Motti Pty Ltd (ACN 066 411 041)  
595 Flinders St, Townsville, Q, 4810  
Phone: 07 4772 1144, Fax: 07 4772 2557, Email: townsville@braziermotti.com.au

**AS CONSTRUCTED**

BRAZIER & MOTTI PTY LTD (ACN 066 411 041), 595 FLINDERS STREET, TOWNSVILLE HEREBY CERTIFY THAT THIS DRAWING ACCURATELY AND CORRECTLY DESCRIBES AND RECORDS THE NATURE AND THE LOCATION OF THE WORKS DEPICTED BY ASTERISKS (\*) HEREON AS THEY HAVE BEEN CONSTRUCTED FOR SUBDIVISION

DIRECTOR  
REGISTERED SURVEYOR AND DIRECTOR  
DATED THIS DAY OF 2012

BASE SURVEY  
Brazier Motti (06092/091)  
TRUNCATED COORDINATES  
E 0.000, N 0.000  
EQUIVALENT TO  
E 4.60000, N 7800000

LEVEL DATUM A.H.D.  
Horizontal Datum GDA' 94 Zone 55  
Refer P.M. 177233 RL - 13.514  
Belt & washer in kerb.  
Intersection SOMERTON/DUNDABELLA



THE ORIGINAL OF THIS DOCUMENT IS COMPLETED TO THE SCALE NOTED. AS REPRODUCTION CAN DISTORT SIZE & SHAPE USE ONLY THE DIMENSIONS PROVIDED ON ARCHITECTURAL &/OR ENGINEERING DRAWINGS. VERIFY DIMENSIONS ON SITE BEFORE CONSTRUCTION.

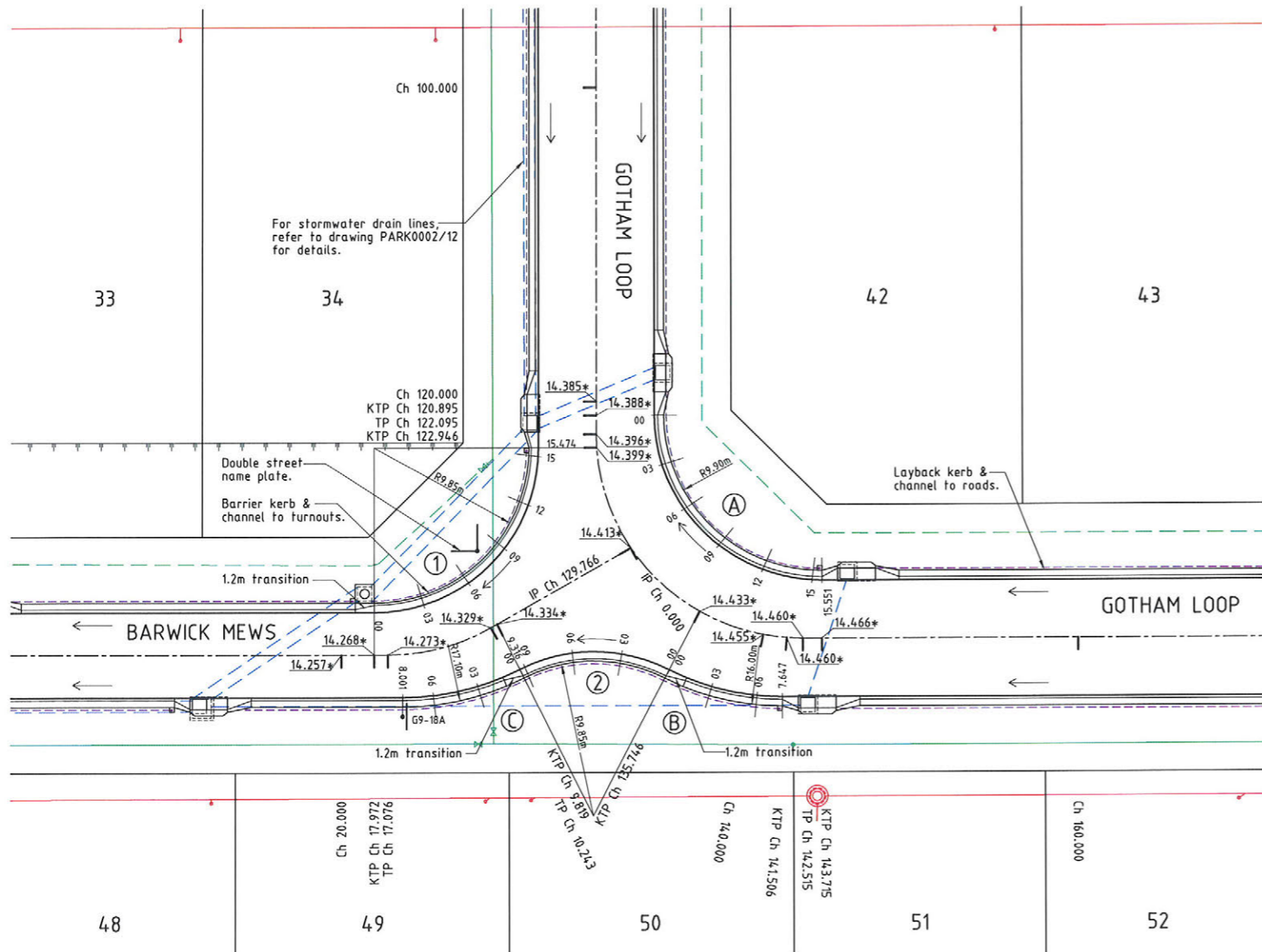


Civil & Structural Engineers  
50 Punari Street, Currajong 4812  
Phone: 07 4725 5550 Fax: 07 4725 5850  
Email: mail@nceng.com.au  
Milton Messer & Associates Pty. Ltd.  
ACN 100 817 356

Issue	Description	Date
B	AS CONSTRUCTED - BW2A (22 LOTS) REVISION B	05/07/2012
A	ISSUED FOR CONSTRUCTION.	08/12/2011
P1	PRELIMINARY - NOT FOR CONSTRUCTION - ISSUED FOR COUNCIL APPROVAL (OPW).	11/07/2011

Drawn JHS	In Association With <b>PARKSIDE DEVELOPMENT PTY LTD</b>	<b>ROAD CROSS SECTIONS</b>
Date 11/07/2011	<b>STAGE 2, 31 ALLOTMENT RESIDENTIAL SUBDIVISION BRENDALE WEST GOTHAM LOOP, DEERAGUN</b>	
Checked AS		Drawing Number <b>PARK0002/07</b>
Approved AS		Issue <b>B</b>
COPYRIGHT ©		



LAYOUT PLAN  
Scale 'A'

LEGEND

- 12.000\* - Surface level.
- - Direction of fall.
- - - - - Top of batter.
- - - - - Toe of batter.
- - - - - Stormwater drain line.
- - - - - Subsoil drain.
- - - - - Sewer main.
- - Sewer manhole.
- - - - - Water main.
- - - - - Poly water main.

SIGNAGE--

CODE	EXAMPLE	DESCRIPTION
G9-18A		No Through Road

No.	CORNER EDGE A	CORNER EDGE B	CORNER EDGE C
CHGE.	BACK OF KERB LEVEL	BACK OF KERB LEVEL	BACK OF KERB LEVEL
00	14.400*	14.410*	14.357*
03	14.408*	14.422*	14.336*
06	14.417*	14.439*	14.326*
7.647		14.450*	
8.001			14.319*
09	14.429*		
12	14.444*		
15	14.457*		
15.551	14.465*		

**ACCEPTED  
AS CONSTRUCTED**

REAL PROPERTY DESCRIPTION

Lot 2 on SP 232875  
Parish of BOHLE  
County of ELPHINSTONE  
Geaney Lane - Deeragun

In Association with:-



surveying | town planning | project management | mapping and GIS

Brazier Motti Pty Ltd (ACN 066 411 041)

595 Flinders St, Townsville, Q. 4810

Phone: 07 4772 1144, Fax: 07 4772 2557, Email: townsville@braziermotti.com.au

AS CONSTRUCTED

BRAZIER & MOTTI PTY LTD, (ACN 066 411 041), 595 FLINDERS STREET, TOWNVILLE HEREBY CERTIFY THAT THIS DRAWING ACCURATELY AND CORRECTLY DESCRIBES AND RECORDS THE NATURE AND THE LOCATION OF THE WORKS DEPICTED BY ASTERISKS (\*) HEREON AS THEY HAVE BEEN CONSTRUCTED FOR SUBDIVISION

DATED THIS DAY 5 OF JULY 2012

REGISTERED SURVEYOR AND DIRECTOR

BASE SURVEY  
Brazier Motti (06092/091)  
TRUNCATED COORDINATES  
E 0.000, N 0.000  
EQUIVALENT TO  
E 460000, N 7800000

LEVEL DATUM A.H.D.  
Horizontal Datum GDA' 94 Zone 55  
Refer P.M. 177233 RL: 13.514  
Bolt & washer in kerb.  
Intersection SOMERTON/DUNDABELLA

Scale 'A'  
0 2 4 6 8m

Scale 'B'  
0 1 2 3 4m

Scale 'C'  
0 0.2 0.4 0.6 0.8m

THE ORIGINAL OF THIS DOCUMENT IS COMPLETED TO THE SCALE NOTED. AS REPRODUCTION CAN DISTORT SIZE & SHAPE USE ONLY THE DIMENSIONS PROVIDED ON ARCHITECTURAL &/OR ENGINEERING DRAWINGS. VERIFY DIMENSIONS ON SITE BEFORE CONSTRUCTION.

All work is to be carried out in accordance with LOCAL AUTHORITIES standard details.



Civil & Structural Engineers  
50 Punari Street, Currajong 4812  
Phone: 07 4725 5550 Fax: 07 4725 5850  
Email: mail@nceng.com.au  
Milton Messer & Associates Pty. Ltd.  
ACN 100 817 356

Indicates back of kerb.

BACK OF KERB LEVELS	0.000	3.000	6.000	9.000	12.000	15.000	18.000
PEGGED CHAINAGE	0.000	3.000	6.000	9.000	12.000	15.000	18.000

TURNOUT 1  
Scale 'B' - Horizontal  
Scale 'C' - Vertical

Indicates back of kerb.

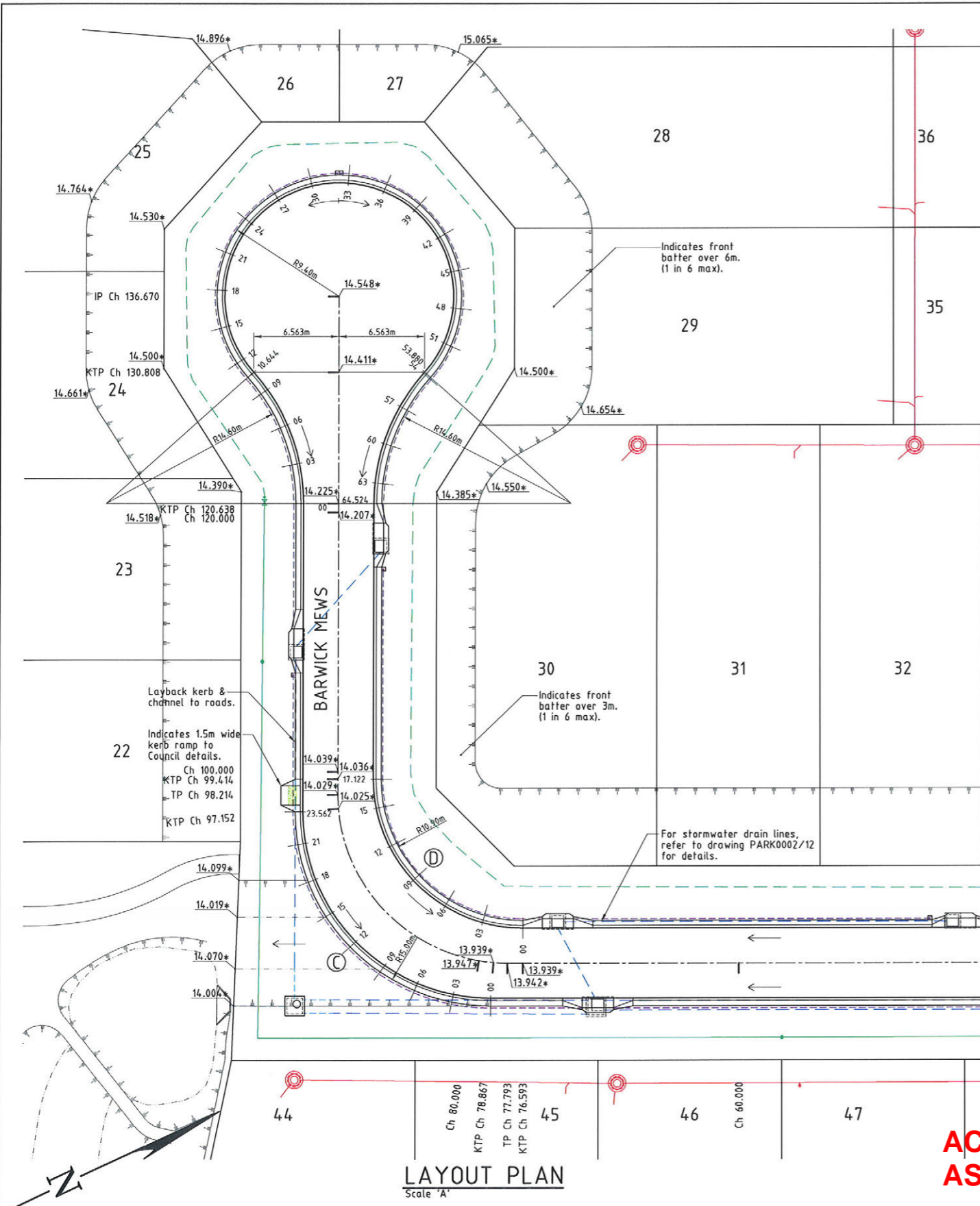
BACK OF KERB LEVELS	0.000	3.000	6.000	9.000	12.000	15.000	18.000
PEGGED CHAINAGE	0.000	3.000	6.000	9.000	12.000	15.000	18.000

TURNOUT 2  
Scale 'B' - Horizontal  
Scale 'C' - Vertical

\* - Indicates as constructed information.

Issue	Description	Date
C	AS CONSTRUCTED - BW2A (22 LOTS) REVISION B	05/07/2012
B	PRELIMINARY - AS CONSTRUCTED - BW2A (22 LOTS) REVISION A	21/06/2012
A	ISSUED FOR CONSTRUCTION.	08/12/2011
P2	PRELIMINARY - NOT FOR CONSTRUCTION - ISSUED FOR COUNCIL APPROVAL (OPW).	21/07/2011
P1	PRELIMINARY - NOT FOR CONSTRUCTION - ISSUED FOR COUNCIL APPROVAL (OPW).	11/07/2011

Drawn JHS Date 11/07/2011	In Association With <b>PARKSIDE DEVELOPMENT PTY LTD</b>	<b>INTERSECTION &amp; CORNER WIDENING DETAILS</b>
Checked Approved	<b>STAGE 2, 31 ALLOTMENT RESIDENTIAL SUBDIVISION BRENDALE WEST GOTHAM LOOP, DEERAGUN</b>	
COPYRIGHT ©		Drawing Number <b>PARK002/08</b>
		Issue <b>C</b>



DATUM RL. 12.500

BACK OF KERB LEVELS	0.000	3.000	6.000	9.000	12.000	15.000	18.000	21.000	24.000	27.000	30.000	33.000	36.000	39.000	42.000	45.000	48.000	51.000	54.000	57.000	60.000	63.000	64.500
PEGGED CHAINAGE	0.000	14.225*	14.266*	14.289*	14.309*	14.333*	14.351*	14.366*	14.377*	14.381*	14.384*	14.386*	14.387*	14.388*	14.389*	14.390*	14.391*	14.392*	14.393*	14.394*	14.395*	14.396*	14.397*

**BARWICK MEWS - TURNABOUT**  
 Scale 'A' - Horizontal  
 Scale 'B' - Vertical

No.	CORNER EDGE C	CORNER EDGE D
CHGE.	BACK OF KERB LEVEL	BACK OF KERB LEVEL
00	13.970*	13.966*
03	13.977*	13.981*
06	13.984*	13.993*
09	13.989*	14.011*
12	14.010*	14.025*
15	14.016*	14.035*
17.122		14.043*
18	14.019*	
21	14.030*	
23.562	14.037*	

- LEGEND**
- 12.000\* - Surface level.
  - - Direction of fall.
  - - Top of batter.
  - - Toe of batter.
  - - Stormwater drain line.
  - - Subsoil drain.
  - - Sewer main.
  - - Sewer manhole.
  - - Water main.
  - - Poly water main.
  - - Stormwater drain line.

**AS CONSTRUCTED**

BRAZIER & MOTTL PTY. LTD. (ACN 066 411 041), 595 FLINDERS STREET, CROWNSVILLE HEREBY CERTIFY THAT THIS DRAWING ACCURATELY AND CORRECTLY DESCRIBES AND RECORDS THE NATURE AND THE LOCATION OF THE WORKS DEPICTED BY ASTERISKS (\*) HEREON AS THEY HAVE BEEN CONSTRUCTED FOR SUBDIVISION

..... DIRECTOR

..... REGISTERED SURVEYOR AND DIRECTOR

DATED THIS DAY OF JULY 2012

**ACCEPTED AS CONSTRUCTED**

**REAL PROPERTY DESCRIPTION**

Lot 2 on SP 232875  
 Parish of BOHLE  
 County of ELPHINSTONE  
 Geaney Lane - Deeragun

In Association with:-

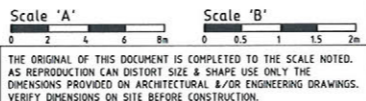
**brazier mottl**

surveying | town planning | project management | mapping and GIS

Brazier Mottl Pty Ltd (ACN 066 411 041)  
 595 Flinders St., Townsville, Q., 4810  
 Phone: 07 4772 1144, Fax: 07 4772 2557, Email: townsville@braziermottl.com.au

BASE SURVEY  
 Brazier Mottl (06092/091)  
 TRUNCATED COORDINATES  
 E 0.000, N 0.000  
 EQUIVALENT TO  
 E 466000, N 7800000

LEVEL DATUM A.H.D.  
 Horizontal Datum GDA' 94 Zone 55  
 Refer P.M. 177233 RL. 13.514  
 Bolt & washer in kerb.  
 Intersection SOMERTON/DUNDEBELLA



\* - Indicates as constructed information.

All work is to be carried out in accordance with LOCAL AUTHORITIES standard details.

**NORTHERN CONSULTING**  
 engineers

Civil & Structural Engineers  
 50 Punari Street, Currajong 4812  
 Phone: 07 4725 5550 Fax: 07 4725 5850  
 Email: mail@nceng.com.au  
 Milton Messer & Associates Pty. Ltd.  
 ACN 100 817 358

Issue	Description	Date
D	AS CONSTRUCTED - BW2A (22 LOTS) REVISION B	05/07/2012
C	PRELIMINARY - AS CONSTRUCTED - BW2A (22 LOTS) REVISION A	21/06/2012
B	PEDESTRIAN PATHWAY AMENDED & KERB RAMP ADDED.	17/01/2012
A	ISSUED FOR CONSTRUCTION.	08/12/2011
P3	PRELIMINARY - NOT FOR CONSTRUCTION - AMENDED TO COUNCIL R.O.L. NOTICE - ISSUED FOR COUNCIL APPROVAL (OPW).	23/08/2011
P2	PRELIMINARY - NOT FOR CONSTRUCTION - ISSUED FOR COUNCIL APPROVAL (OPW).	21/07/2011
P1	PRELIMINARY - NOT FOR CONSTRUCTION - ISSUED FOR COUNCIL APPROVAL (OPW).	11/07/2011

Drawn	In Association With	TURNABOUT & CORNER WIDENING DETAILS
JHS	<b>PARKSIDE DEVELOPMENT PTY LTD</b>	
11/07/2011	<b>STAGE 2, 31 ALLOTMENT RESIDENTIAL SUBDIVISION BRENDALE WEST GOTHAM LOOP, DEERAGUN</b>	
Checked		Drawing Number
Approved		<b>PARK0002/09</b>
COPYRIGHT ©		Issue
		<b>D</b>

