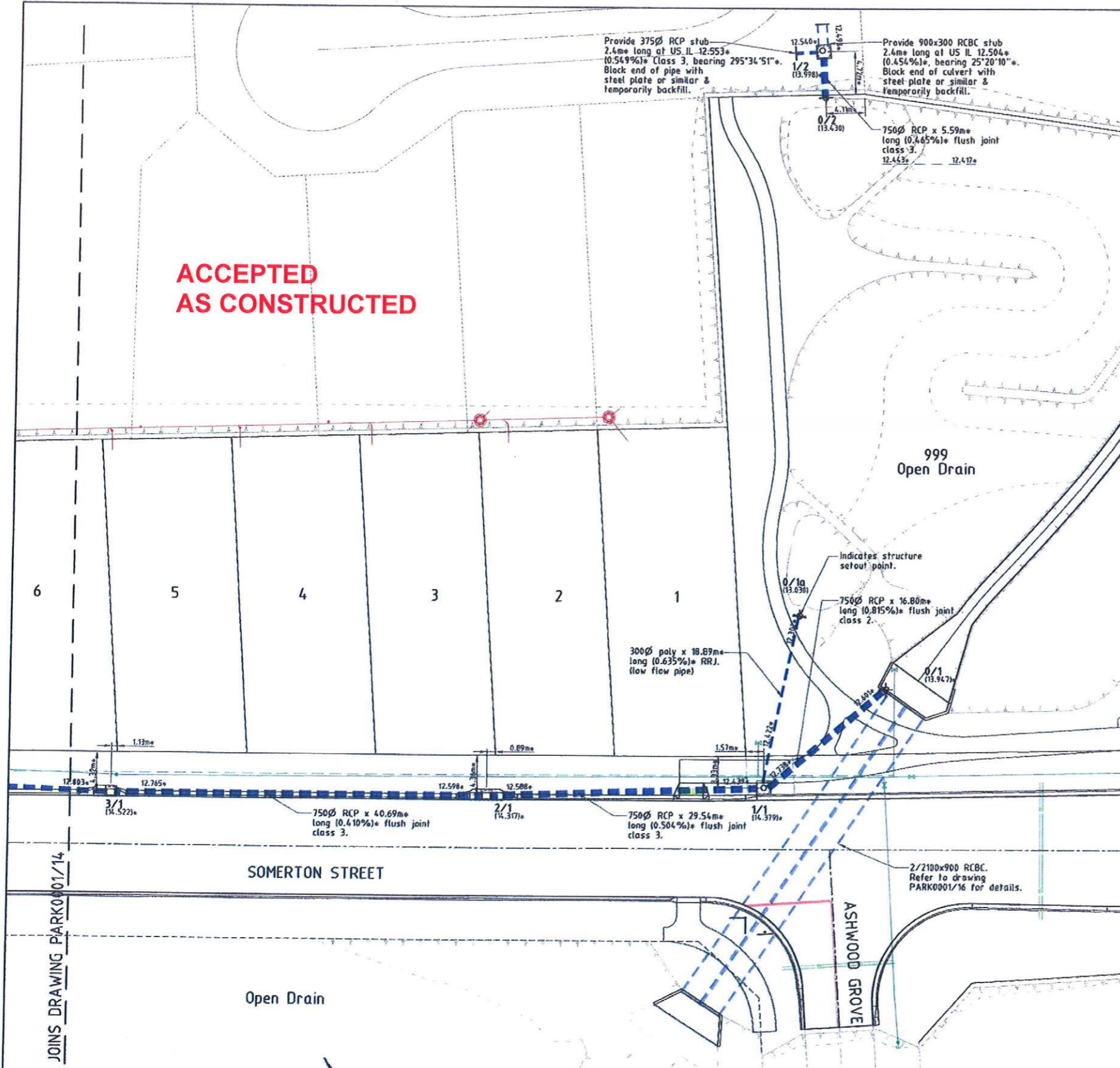


**ACCEPTED
AS CONSTRUCTED**

LEGEND

2/1	- Pit No. 2/Drainline No. 1
(12.000)+	- As constructed top of structure levels.
12.000+	- As constructed pipe invert levels.
- - - - -	- Top of batter.
- - - - -	- Toe of batter.
- - - - -	- Stormwater drain line.
- - - - -	- Sewer main.
- - - - -	- Sewer manhole.
- - - - -	- Water main.
- - - - -	- Poly water main.
- - - - -	- Irrigation conduits.
- - - - -	- Structure setout point.



STORMWATER STRUCTURE SETOUT TABLE

PIT No.	EASTING	NORTHING	STRUCTURE TYPE	TOP LEVEL
0/1	5423.373+	7908.787+	Culvert Head Wall Structure	13.947+
0/1a	5417.830+	7922.657+	Outlet Structure - Temporary Sandbag Headwall	13.030
1/1	5405.671+	7908.213+	Stormwater Manhole - Type 2	14.379+
2/1	5379.297+	7921.526+	Grated Kerb Inlet (1360x) - Type 1	14.317+
3/1	5343.731+	7941.291+	Grated Kerb Inlet (2400x) - Type 1	14.522+
0/2	5447.224+	7909.831+	Outlet Structure - Temporary Sandbag Headwall	13.430
1/2	5449.640+	7974.869+	Stormwater Manhole - Type 2	13.998+

- All dimensions are to centre of chamber.
 - Setout of stormwater structure 0/1 is to end of pipe.
 - Refer to drawing PARK001/16 for details.

AS CONSTRUCTED

BRAZIER & MOTTI PTY LTD, IACN 066 411 9411, 595 FLINDERS STREET, TOWNSVILLE HEREBY CERTIFY THAT THIS DRAWING ACCURATELY AND CORRECTLY DESCRIBES AND RECORDS THE NATURE AND THE LOCATION OF THE WORKS DEPICTED BY ASTERISKS (*) HEREON AS THEY HAVE BEEN CONSTRUCTED FOR SUBDIVISION

DIRECTOR
 REGISTERED SURVEYOR AND DIRECTOR
 DATED THIS DAY 7th July 2012

REAL PROPERTY DESCRIPTION

Lot 2 on SP 232875
 Parish of BOHLE
 County of ELPHINSTONE
 Geancy Lane - Deeragun



BASE SURVEY
 Brazier Motti 106092/0911
 TRUNCATED COORDINATES
 E 0.000, N 0.000
 EQUIVALENT TO
 E 440000, N 7800000

LEVEL DATUM A.M.D.
 Horizontal Datum GDA 94 Zone 55
 Refer P.M. 177233 RL. 13.514
 Bolt & washer in kerb.
 Intersection SOMERTON/DUNDELLA

Scale
 1:250
 THE ORIGINAL OF THIS DOCUMENT IS COMPLETED TO THE SCALE NOTED.
 AS REPRODUCTION CAN DISTORT SIZE & SHAPE USE ONLY THE
 DIMENSIONS PROVIDED ON ARCHITECTURAL &/OR ENGINEERING DRAWINGS.
 VERIFY DIMENSIONS ON SITE BEFORE CONSTRUCTION.

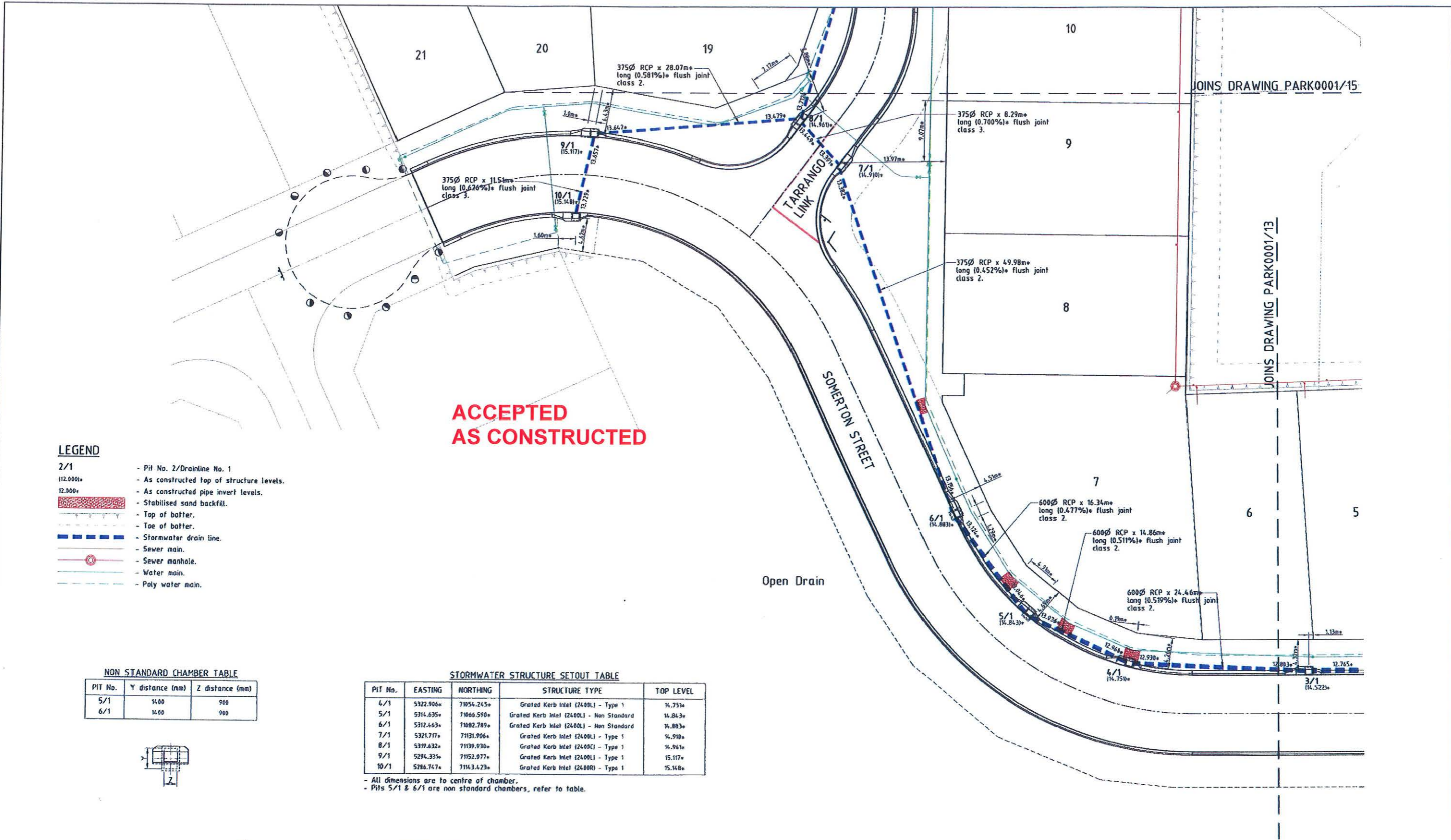
All work is carried out in accordance with LOCAL AUTHORITIES standard details. * - Indicates as constructed information.



Civil & Structural Engineers
 50 Punari Street, Currarong 4812
 Phone: 07 4725 5550 Fax: 07 4725 5850
 Email: mail@nceng.com.au
 Milton Messer & Associates Pty. Ltd.
 ACN 100 817 356

Issue	Description	Date
E	AMENDED TO AS CONSTRUCTED (ON MAINTENANCE).	07/08/2012
D	AMENDED TO AS CONSTRUCTED (ON MAINTENANCE).	23/07/2012
C	AMENDED TO AS CONSTRUCTED (EARLY PLAN OF SURVEY RELEASE).	27/04/2012
B	AMENDED TO AS CONSTRUCTED (EARLY PLAN OF SURVEY RELEASE).	26/04/2012
A	ISSUED FOR CONSTRUCTION.	08/12/2011
P3	PRELIMINARY - NOT FOR CONSTRUCTION - OUTLETS 0/2 & 0/1a AMENDED - ISSUED FOR INFORMATION ONLY.	17/11/2011
P2	PRELIMINARY - NOT FOR CONSTRUCTION - AMENDED TO COUNCIL R.O.L. NOTICE - ISSUED FOR COUNCIL APPROVAL (OPW).	23/08/2011
P1	PRELIMINARY - NOT FOR CONSTRUCTION - ISSUED FOR COUNCIL APPROVAL (OPW).	24/06/2011

Drawn	In Association With	STORMWATER DRAIN LINE PLAN
JHS	PARKSIDE DEVELOPMENT PTY LTD	
Date	24/06/2011	
Checked	STAGE 1, 21 ALLOTMENT RESIDENTIAL SUBDIVISION	
Approved	BRENDALE WEST	
COPYRIGHT ©	SOMERTON STREET, DEERAGUN	Drawing Number PARK001/13
		Issue E



JOINS DRAWING PARK0001/15

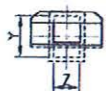
JOINS DRAWING PARK0001/13

LEGEND

- 2/1 - Pit No. 2/Drainline No. 1
- 112.000+ - As constructed top of structure levels.
- 12.300+ - As constructed pipe invert levels.
- [Red hatched box] - Stabilised sand backfill.
- [Dashed line] - Top of batter.
- [Dotted line] - Toe of batter.
- [Blue dashed line] - Stormwater drain line.
- [Red line] - Sewer main.
- [Red circle with cross] - Sewer manhole.
- [Blue line] - Water main.
- [Green dashed line] - Poly water main.

NON STANDARD CHAMBER TABLE

PIT No.	Y distance (mm)	Z distance (mm)
5/1	14.60	980
6/1	14.60	980



STORMWATER STRUCTURE SETOUT TABLE

PIT No.	EASTING	NORTHING	STRUCTURE TYPE	TOP LEVEL
4/1	5322.906+	71054.245+	Grated Kerb Intel (2400L) - Type 1	14.751+
5/1	5314.635+	71066.590+	Grated Kerb Intel (2400L) - Non Standard	14.843+
6/1	5312.463+	71082.789+	Grated Kerb Intel (2400L) - Non Standard	14.883+
7/1	5311.717+	71131.906+	Grated Kerb Intel (2400L) - Type 1	14.910+
8/1	5319.632+	71139.930+	Grated Kerb Intel (2400L) - Type 1	14.961+
9/1	5294.335+	71152.977+	Grated Kerb Intel (2400L) - Type 1	15.117+
10/1	5286.747+	71163.423+	Grated Kerb Intel (2400R) - Type 1	15.148+

- All dimensions are to centre of chamber.
- Pits 5/1 & 6/1 are non standard chambers, refer to table.

AS CONSTRUCTED

BRAZIER & MOTTI PTY.LTD. (ACN 066 411 041), 595 FLINDERS STREET, TOWNSVILLE HEREBY CERTIFY THAT THIS DRAWING ACCURATELY AND CORRECTLY DESCRIBES AND RECORDS THE NATURE AND THE LOCATION OF THE WORKS DEPICTED BY ASTERISKS (*) HEREON AS THEY HAVE BEEN CONSTRUCTED FOR SUBMISSION

DIRECTOR
REGISTERED SURVEYOR AND DIRECTOR
DATED THIS DAY OF 20/12/2011

LEVEL DATUM A.M.D.
Horizontal Datum GDA' 94 Zone 55
Refer P.M. 17233 RL 13.514
Bolt & washer in kerb.
Intersection SOMERTON/DUNDABELLA

Scale
0 2.5 5 7.5 10m

THE ORIGINAL OF THIS DOCUMENT IS COMPLETED TO THE SCALE NOTED. AS REPRODUCTION CAN DISTORT SIZE & SHAPE USE ONLY THE DIMENSIONS PROVIDED BY ARCHITECTURAL &/OR ENGINEERING DRAWINGS. VERIFY DIMENSIONS ON SITE BEFORE CONSTRUCTION.

LAYOUT PLAN

Issue	Description	Date
E	AMENDED TO AS CONSTRUCTED (ON MAINTENANCE).	23/07/2012
D	AMENDED TO AS CONSTRUCTED (EARLY PLAN OF SURVEY RELEASE).	27/04/2012
C	AMENDED TO AS CONSTRUCTED (EARLY PLAN OF SURVEY RELEASE).	26/04/2012
B	ISSUED FOR CONSTRUCTION - MINOR AMENDMENTS.	08/12/2011
A	ISSUED FOR CONSTRUCTION.	29/11/2011
P1	PRELIMINARY - NOT FOR CONSTRUCTION - ISSUED FOR COUNCIL APPROVAL (DPW).	24/05/2011

REAL PROPERTY DESCRIPTION

Lot 2 on SP 232875
Parish of BOHLE
County of ELPHINSTONE
Geaney Lane - Deeragun

In Association with:-

brazier motti
surveying | town planning | project management | mapping and GIS
Brazier Motti Pty Ltd (ACN 066 411 041)
595 Flinders St. Townsville, Q. 4810
Phone: 07 4772 1144, Fax: 07 4772 2557, Email: townsville@braziermotti.com.au

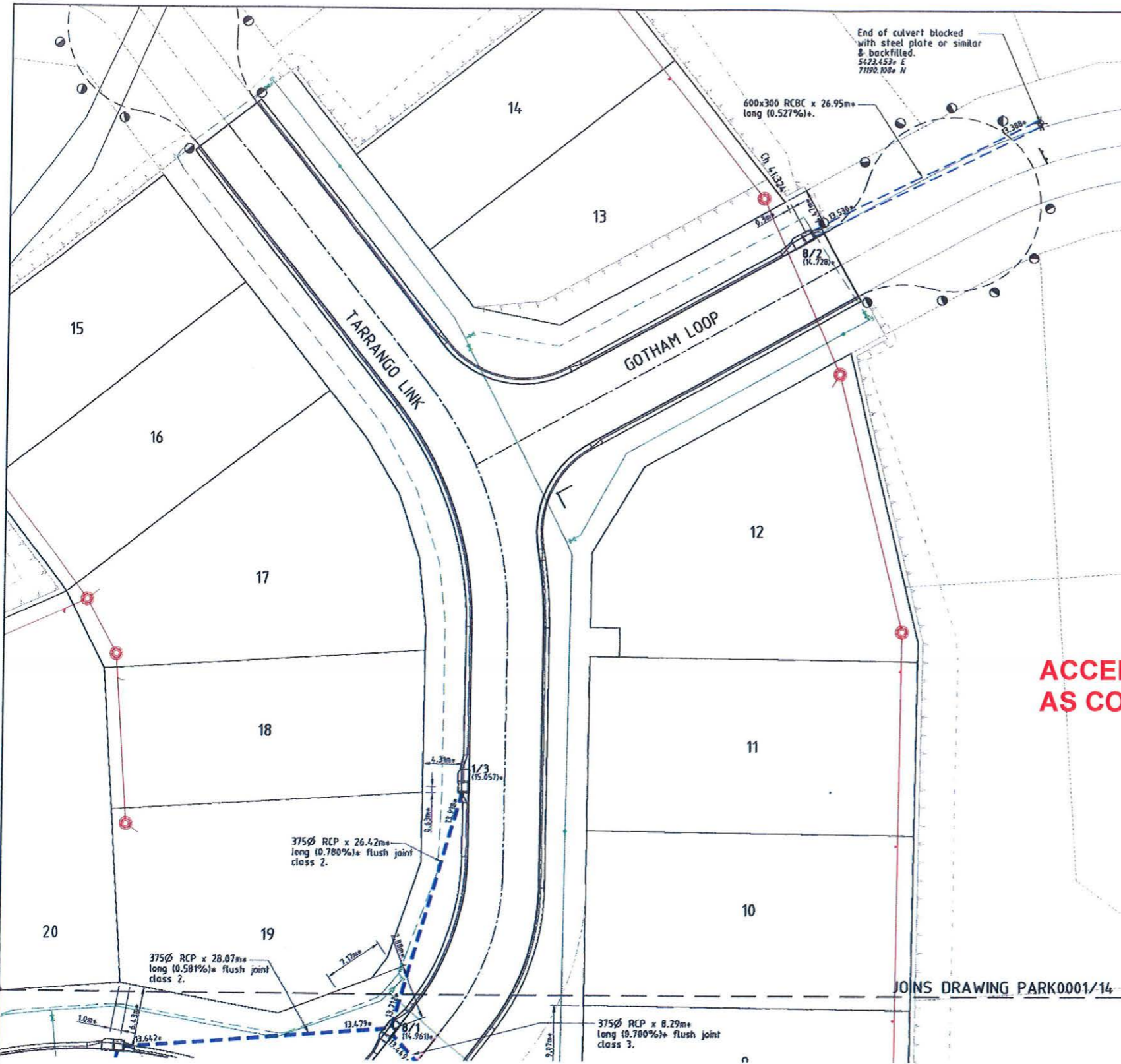
All work is carried out in accordance with LOCAL AUTHORITIES standard details. * - Indicates as constructed information.

NORTHERN CONSULTING
engineers
Civil & Structural Engineers
50 Punari Street, Currajong 4812
Phone: 07 4725 5550 Fax: 07 4725 5850
Email: mail@nceng.com.au
Milton Messer & Associates Pty. Ltd.
ACN 100 817 358

Drawn: JHS
Date: 24/06/2011
Checked: [Signature]
Approved: [Signature]

In Association with
PARKSIDE DEVELOPMENT PTY LTD
STAGE 1, 21 ALLOTMENT RESIDENTIAL SUBDIVISION
BRENDALE WEST
SOMERTON STREET, DEERAGUN

STORMWATER DRAIN LINE PLAN
Drawing Number: **PARK0001/14**
Issue: **E**



LEGEND

- 2/1 - Pit No. 2/Drainline No. 1
- (12.000)+ - As constructed top of structure levels.
- 12.000+ - As constructed pipe invert levels.
- Top of batter.
- Top of batter.
- Stormwater drain line.
- Sewer main.
- Sewer manhole.
- Water main.
- Poly water main.
- Structure setout point.

ACCEPTED AS CONSTRUCTED

STORMWATER STRUCTURE SETOUT TABLE

PIT No.	EASTING	NORTHING	STRUCTURE TYPE	TOP LEVEL
B/2	5386.517+	71191.161+	Grated Kerb Inlet (2400L) - Type 1	14.726+
1/3	5338.384+	71158.545+	Grated Kerb Inlet (2400L) - Type 1	15.857+

- All dimensions are to centre of chamber.

AS CONSTRUCTED

BRAZIER & MOTTI PTY LTD. (ACN 066 411 041), 595 FLINDERS STREET, TOWNSVILLE, HEREBY CERTIFY THAT THIS DRAWING ACCURATELY AND CORRECTLY DESCRIBES AND RECORDS THE NATURE AND THE LOCATION OF THE WORKS DEPICTED BY ASTERISKS (*) HEREON AS THEY HAVE BEEN CONSTRUCTED FOR SUBDIVISION.

REGISTERED SURVEYOR AND DIRECTOR
 DATED THIS DAY 17 OF July 2012

All work is carried out in accordance with LOCAL AUTHORITIES standard defaults. * - Indicates as constructed information.

NORTHERN CONSULTING engineers
 Civil & Structural Engineers
 50 Punari Street, Currajong 4812
 Phone: 07 4725 5550 Fax: 07 4725 5850
 Email: mail@nceng.com.au
 Milton Messer & Associates Pty. Ltd.
 ACN 100 817 356

Issue	Description	Date
C	AMENDED TO AS CONSTRUCTED (ON MAINTENANCE).	23/07/2012
B	AMENDED TO AS CONSTRUCTED (EARLY PLAN OF SURVEY RELEASE).	26/04/2012
A	ISSUED FOR CONSTRUCTION.	08/12/2011
P2	PRELIMINARY - NOT FOR CONSTRUCTION - AMENDED TO COUNCIL R.O.L. NOTICE - ISSUED FOR COUNCIL APPROVAL (OPW).	23/08/2011
P1	PRELIMINARY - NOT FOR CONSTRUCTION - ISSUED FOR COUNCIL APPROVAL (OPW).	24/06/2011

REAL PROPERTY DESCRIPTION

Lot 2 on SP 232875
 Parish of BOHLE
 County of ELPHINSTONE
 Geaney Lane - Deeragun

In Association with:-

brazier motti
 surveying | town planning | project management | mapping and GIS
 Brazier Motti Pty Ltd (ACN 066 411 041)
 595 Flinders St, Townsville, Q. 4810
 Phone: 07 4772 1144, Fax: 07 4772 2557, Email: townsville@braziermotti.com.au

BASE SURVEY
 Brazier Motti (06692/1891)
 TRUNCATED COORDINATES
 E 8.000, N 8.000
 EQUIVALENT TO
 E 468000, N 7800000

LEVEL DATUM A.M.D.
 Horizontal Datum GDA' 94 Zone 55
 Refer P.M. 172233 RL. 13.54
 Bolt & washer in kerb.
 Intersection SOMERTON/DUNDABELLA

Scale
 0 2.5 5 7.5 10m
 THE ORIGINAL OF THIS DOCUMENT IS COMPLETED TO THE SCALE NOTED.
 AS REPRODUCTION CAN DISTORT SIZE & SHAPE USE ONLY THE DIMENSIONS PROVIDED ON ARCHITECTURAL &/OR ENGINEERING DRAWINGS.
 VERIFY DIMENSIONS ON SITE BEFORE CONSTRUCTION.

Drawn JHS
 Date 24/06/2011
 Checked [Signature]
 Approved [Signature]
 COPYRIGHT ©

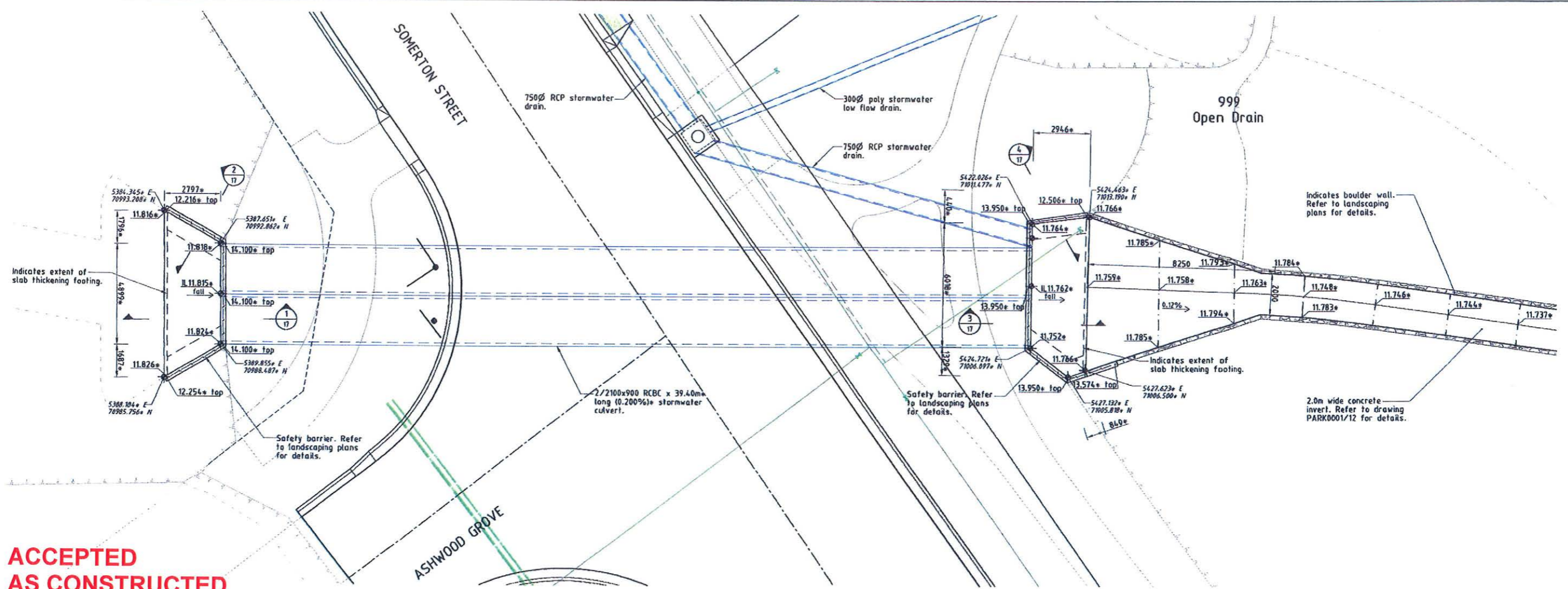
In Association With
PARKSIDE DEVELOPMENT PTY LTD
 STAGE 1, 21 ALLOTMENT RESIDENTIAL SUBDIVISION
 BRENDALE WEST
 SOMERTON STREET, DEERAGUN

STORMWATER DRAIN LINE PLAN
 Drawing Number
PARK001/15

Issue
 C

**ACCEPTED
AS CONSTRUCTED**

**PART LAYOUT PLAN
SOMERTON STREET CULVERT**



LEGEND

12.000*	- Surface level.
→	- Direction of fall.
—	- Top of batter.
—	- Top of batter.
—	- Stormwater drain line.
—	- Subsoil drainage.
—	- Water main.
+	- Structure setout point.

AS CONSTRUCTED

BRAZIER & MOTTI PTY LTD, IACN 066 411 0411, 595 FLINDERS STREET, TOWNSVILLE HEREBY CERTIFY THAT THIS DRAWING ACCURATELY AND CORRECTLY DESCRIBES AND RECORDS THE NATURE AND THE LOCATION OF THE WORKS, DEPICTED BY ASTERISKS (*) HEREON AS THEY HAVE BEEN CONSTRUCTED FOR SUBDIVISION

DATED THIS DAY 7 OF July 2012

DIRECTOR
REGISTERED SURVEYOR AND DIRECTOR

REAL PROPERTY DESCRIPTION

Lot 2 on SP 232875
Parish of BOHLE
County of ELPHINSTONE
Geaney Lane - Deeragun

In Association with:-

brazier motti
surveying | town planning | project management | mapping and GIS

BASE SURVEY
Brazier Motti (66092/091)
TRUNCATED COORDINATES
E 0.000, N 0.000
EQUIVALENT TO
E 468000, N 7800000

LEVEL DATUM A.H.D.
Horizontal Datum GDA' 94 Zone 55
Refer P.M. 177233 RL. 13.514
Bolt & washer in kerb
Intersection SOMERTON/DUNDELLA

Scale 'A'
0 100 200 300 400

THE ORIGINAL OF THIS DOCUMENT IS COMPLETED TO THE SCALE NOTED.
AS REPRODUCTION CAN DISTORT SIZE & SHAPE USE ONLY THE
DIMENSIONS PROVIDED IN ARCHITECTURAL &/OR ENGINEERING DRAWINGS.
VERIFY DIMENSIONS ON SITE BEFORE CONSTRUCTION.

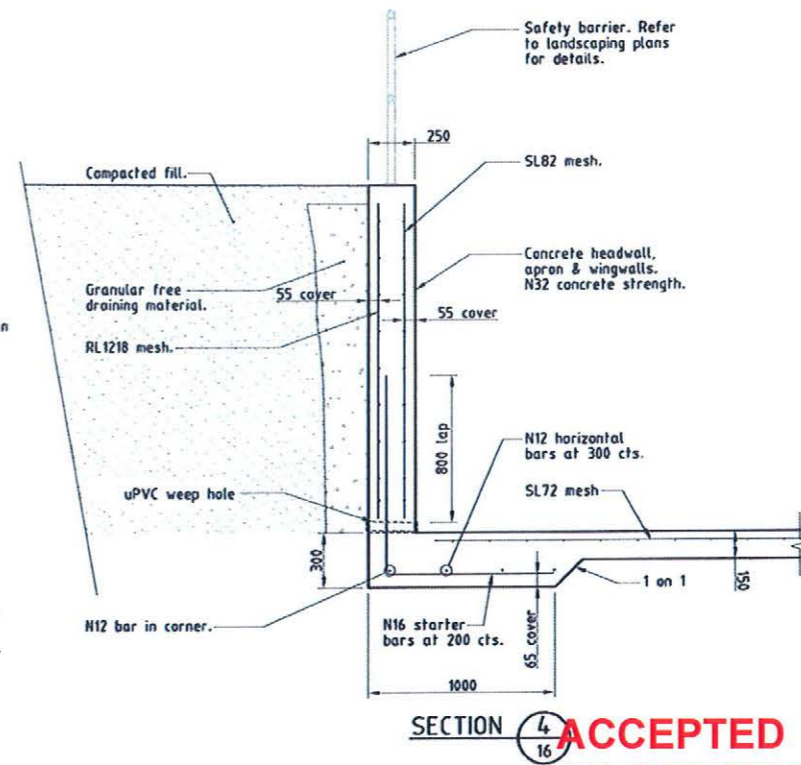
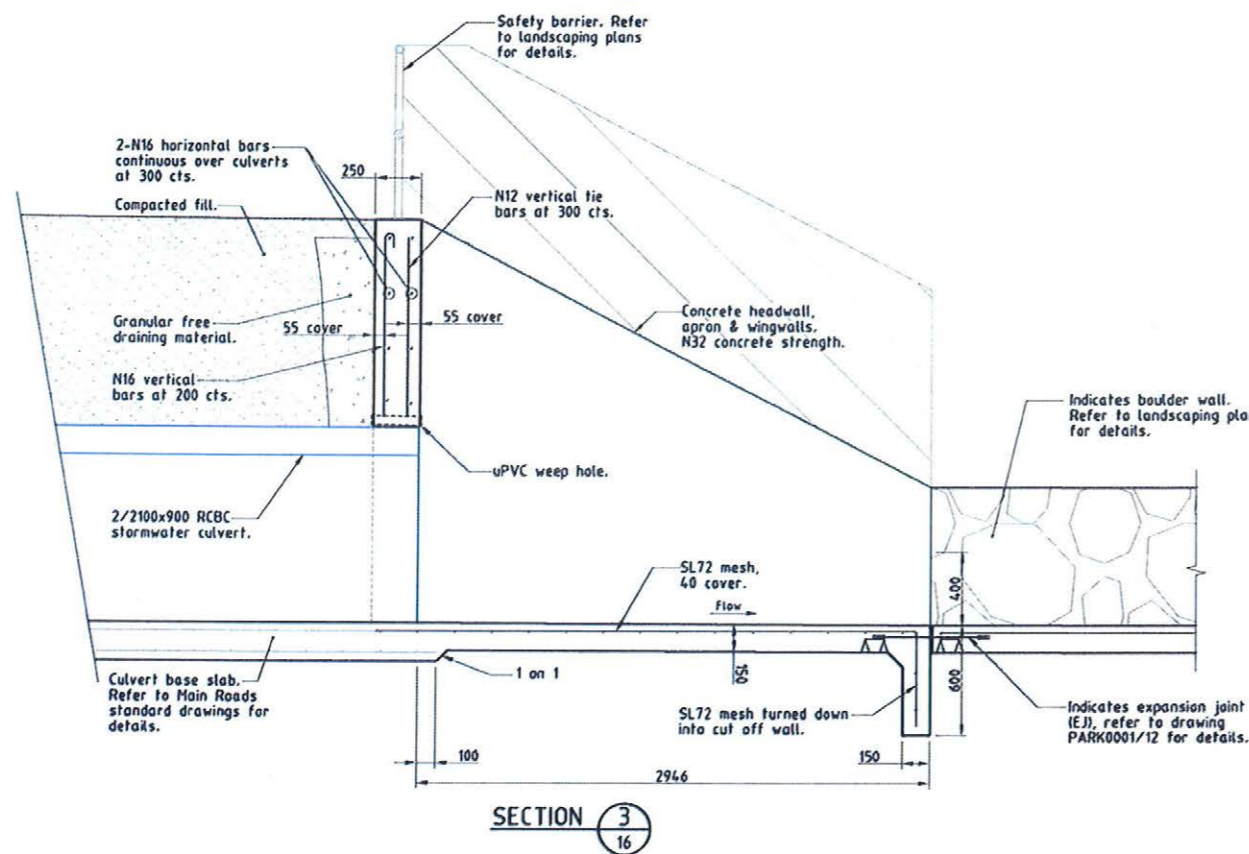
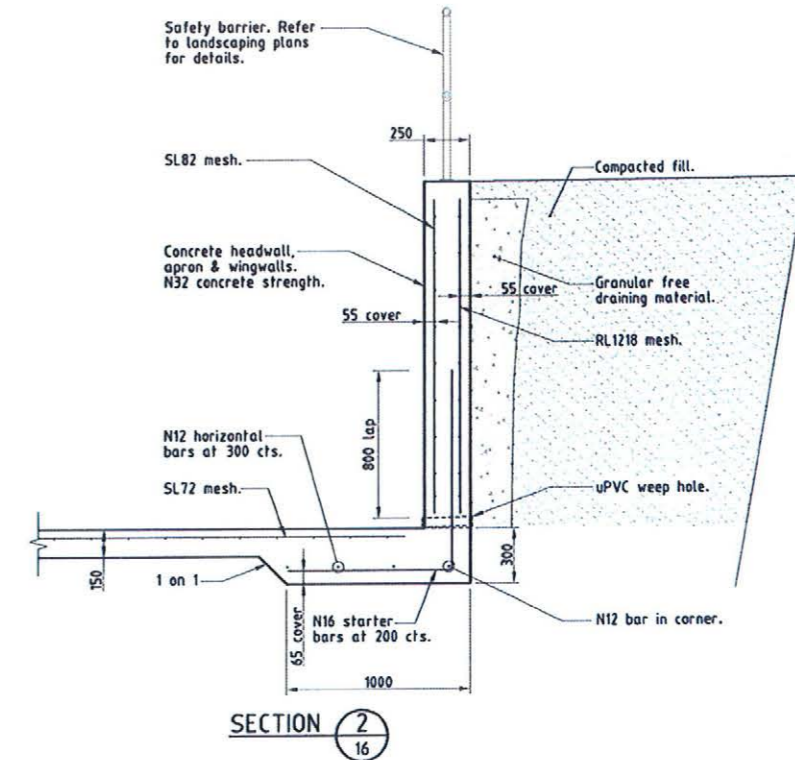
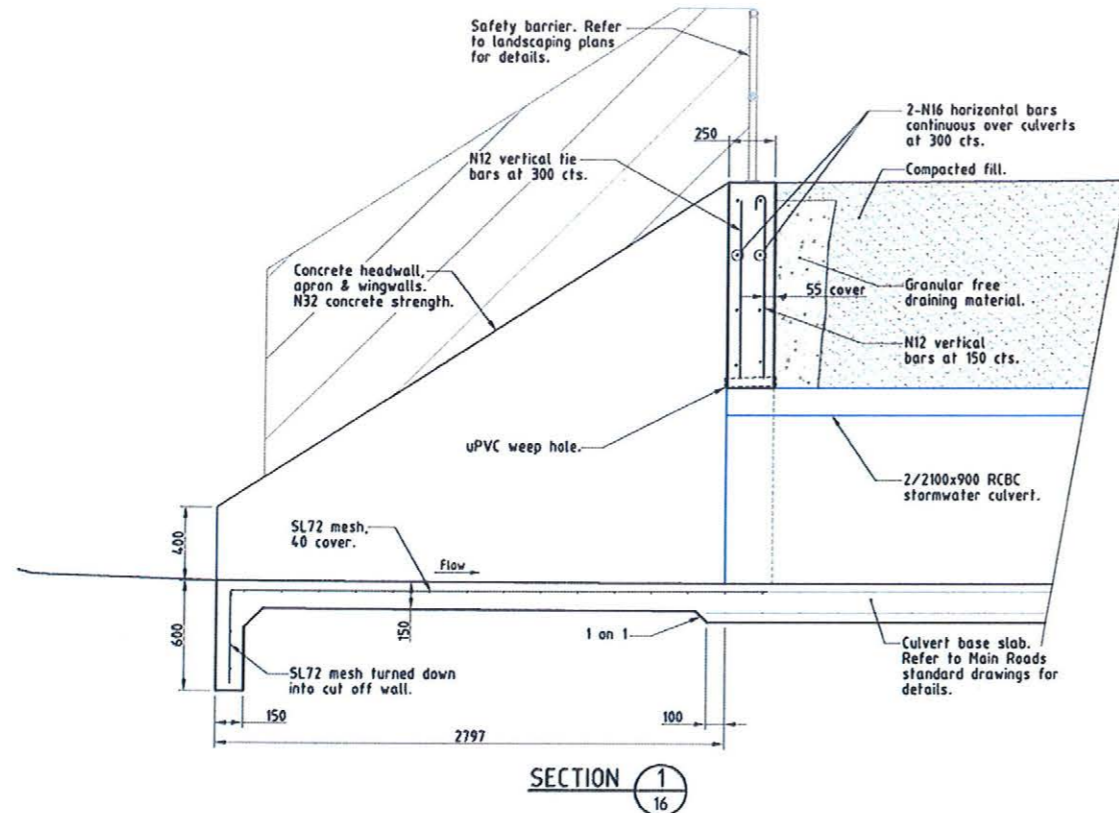
All work is carried out in accordance with LOCAL AUTHORITIES standard details. * - Indicates as constructed information.

NORTHERN CONSULTING
engineers

Civil & Structural Engineers
50 Punari Street, Curnajong 4812
Phone: 07 4725 5550 Fax: 07 4725 5850
Email: mail@nceng.com.au
Mikun Messer & Associates Pty. Ltd.
ACN 100 817 356

Issue	Description	Date
E	AMENDED TO AS CONSTRUCTED FOR MAINTENANCE	07/08/2012
D	AMENDED TO AS CONSTRUCTED FOR MAINTENANCE	23/07/2012
C	AMENDED TO AS CONSTRUCTED EARLY PLAN OF SURVEY RELEASE	27/04/2012
B	AMENDED TO AS CONSTRUCTED EARLY PLAN OF SURVEY RELEASE	26/04/2012
A	ISSUED FOR CONSTRUCTION	08/12/2011
P1	PRELIMINARY - NOT FOR CONSTRUCTION - ISSUED FOR COUNCIL APPROVAL 10P/W1.	24/06/2011

Drawn: JHS Date: 24/06/2011	In Association With PARKSIDE DEVELOPMENT PTY LTD	SOMERTON STREET CULVERT DETAILS
Checked: Approved:	STAGE 1, 21 ALLOTMENT RESIDENTIAL SUBDIVISION BRENDALE WEST SOMERTON STREET, DEERAGUN	
COPYRIGHT ©		Drawing Number PARK001/16
		Issue E



**ACCEPTED
AS CONSTRUCTED**

AS CONSTRUCTED
Northern Consulting Engineers hereby certify that the works detailed on this drawing have been constructed to the dimensions and levels detailed.

T. Messer Date: 26/4/12
Timothy Roy Messer

All work is carried out in accordance with LOCAL AUTHORITIES standard details.



Civil & Structural Engineers
50 Punsari Street, Currarong 4812
Phone: 07 4725 5550 Fax: 07 4725 5850
Email: mail@nceng.com.au
Milton Messer & Associates Pty. Ltd.
ACN 100 817 356

REAL PROPERTY DESCRIPTION

Lot 2 on SP 232875
Parish of BOHLE
County of ELPHINSTONE
Geaney Lane - Deeragun

In Association with:-



surveying | town planning | project management | mapping and GIS
Brazier Motti Pty Ltd (ACN 060 411 041)
595 Flinders St. Townsville, Q. 4810
EQUVALENT TO
E 466000, N 7800000

BASE SURVEY
Brazier Motti (06092/091)
TRUNCATED COORDINATES
E 46600, N 8 000
EQUVALENT TO
E 466000, N 7800000

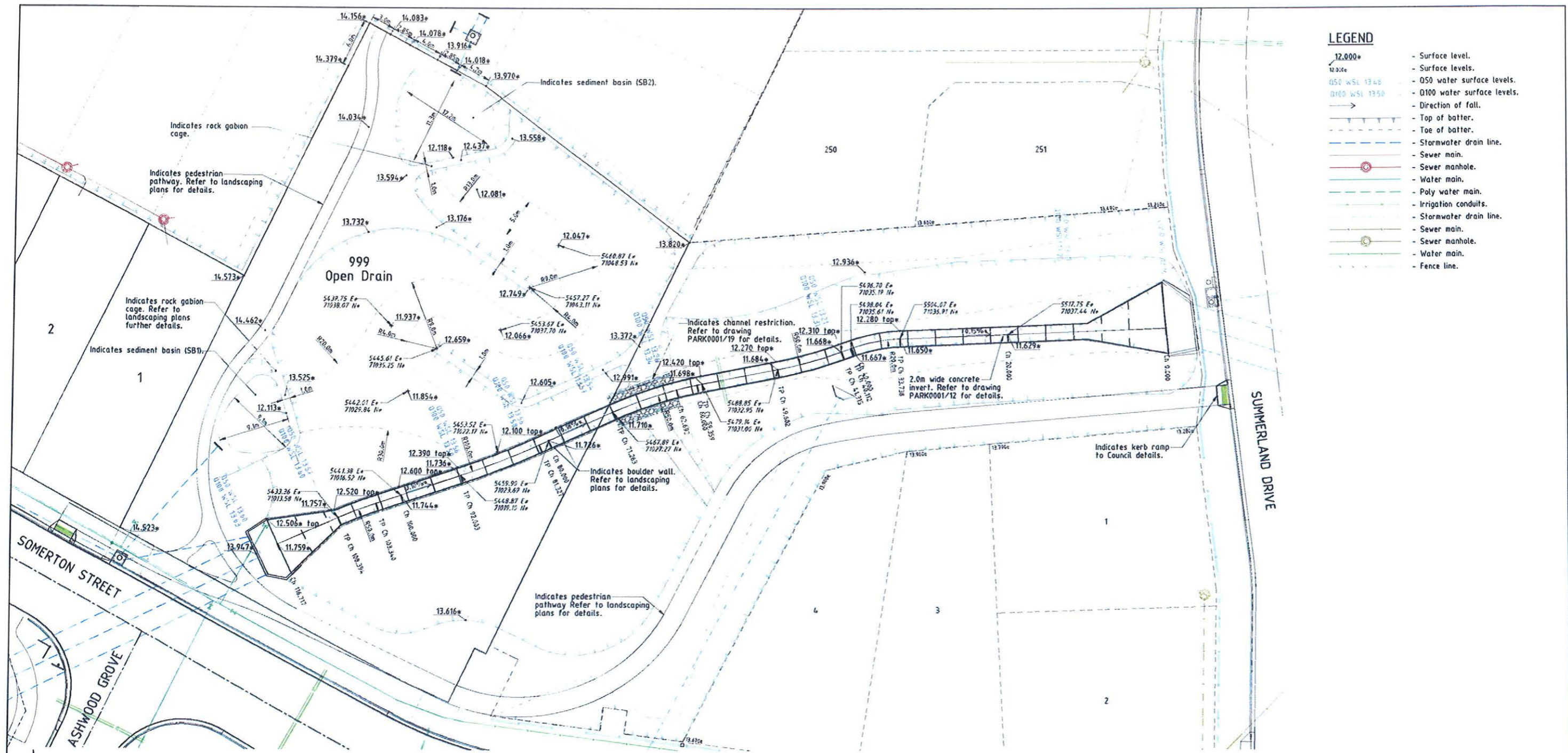
LEVEL DATUM A.M.D.
Horizontal Datum GDA 94 Zone 55
Refer P 95, 17723 RL: 13.514
Bolt & washer in kerb.
Intersection SOMERTON/DUNDABELLA



THE ORIGINAL OF THIS DOCUMENT IS COMPLETED TO THE SCALE NOTED. AS REPRODUCTION CAN DISTORT SIZE & SHAPE USE ONLY THE DIMENSIONS PROVIDED ON ARCHITECTURAL &/OR ENGINEERING DRAWINGS. VERIFY DIMENSIONS ON SITE BEFORE CONSTRUCTION.

Issue	Description	Date
B	AMENDED TO AS CONSTRUCTED EARLY PLAN OF SURVEY RELEASED.	26/04/2012
A	ISSUED FOR CONSTRUCTION.	08/12/2011
P1	PRELIMINARY - NOT FOR CONSTRUCTION - ISSUED FOR COUNCIL APPROVAL (OPW).	24/06/2011

Drawn RHS	In Association With PARKSIDE DEVELOPMENT PTY LTD	SOMERTON STREET CULVERT DETAILS
Date 24/06/2011	STAGE 1, 21 ALLOTMENT RESIDENTIAL SUBDIVISION BREDALE WEST SOMERTON STREET, DEERAGUN	
Checked [Signature]	Drawing Number PARK0001/17	Issue B



- LEGEND**
- 12.000* - Surface level.
 - 12.000 - Surface levels.
 - 050 WSL 13.48 - 050 water surface levels.
 - 0100 WSL 13.50 - 0100 water surface levels.
 - - Direction of fall.
 - - Top of batter.
 - - Toe of batter.
 - - Stormwater drain line.
 - - Sewer main.
 - - Sewer manhole.
 - - Water main.
 - - Poly water main.
 - - Irrigation conduits.
 - - Stormwater drain line.
 - - Sewer main.
 - - Sewer manhole.
 - - Water main.
 - - Fence line.

LAYOUT PLAN

AS CONSTRUCTED

BRAZIER & MOTTI PTY.LTD. (ACN 066 411 041), 595 FLINDERS STREET, TOWNSVILLE HEREBY CERTIFY THAT THIS DRAWING ACCURATELY AND CORRECTLY DESCRIBES AND RECORDS THE NATURE AND THE LOCATION OF THE WORKS DEPICTED BY ASTERISKS (*) HEREON AS THEY HAVE BEEN CONSTRUCTED FOR SUBMISSION.



REAL PROPERTY DESCRIPTION

Lot 2 on SP 232875
Parish of BOHLE
County of ELPHINSTONE
Geaney Lane - Deeragun

In Association with:

surveying | town planning | project management | mapping and GIS

BASE SURVEY
Brazier Motti (06092/091)
TRUNCATED COORDINATES
E 8,000, N 0,000
EQUIVALENT TO
E 4,600, N 7,800,000

LEVEL DATUM A.M.D.
Horizontal Datum GDA' 94 Zone 55
Refer: P.M. 17733 RL, 13,514
Belt & washer in north.
Intersection SOMERTON/DUNDABELLA

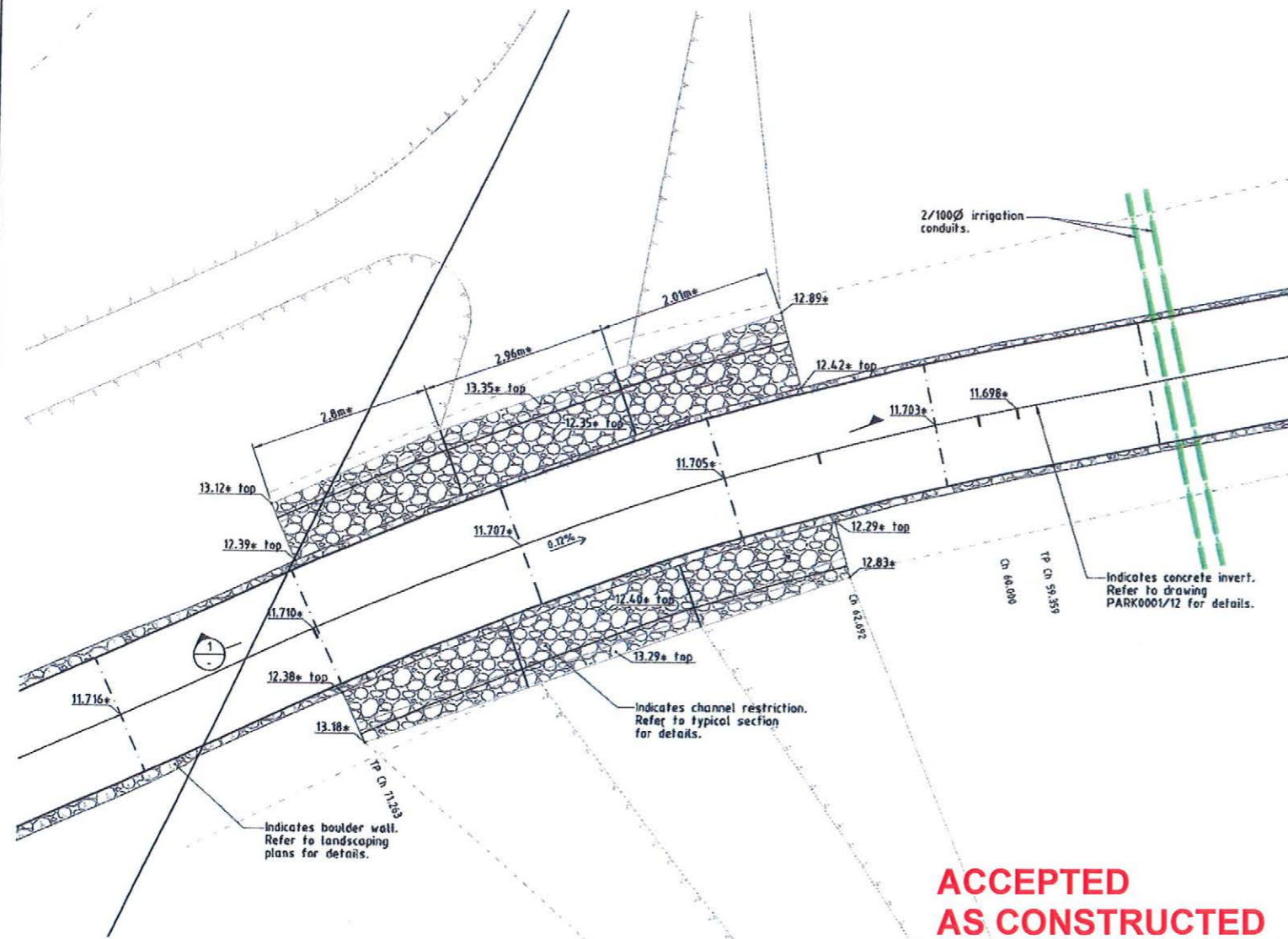
**ACCEPTED
AS CONSTRUCTED**

All work is carried out in accordance with LOCAL AUTHORITIES standard details. * - Indicates as constructed information.

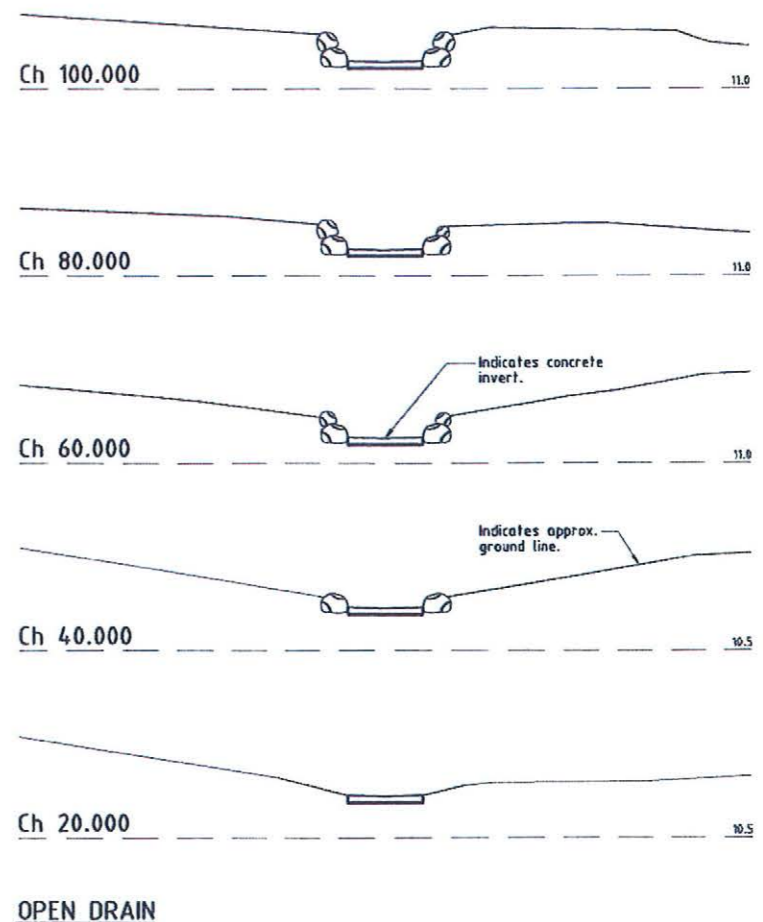
Civil & Structural Engineers
50 Punari Street, Currajong 4812
Phone: 07 4725 5550 Fax: 07 4725 5850
Email: mail@nceng.com.au
Miron Meeser & Associates Pty. Ltd.
ACN 100 817 388

Issue	Description	Date
B	AMENDED TO AS CONSTRUCTED.	17/05/2012
A	ISSUED FOR CONSTRUCTION.	08/12/2011
P2	PRELIMINARY - NOT FOR CONSTRUCTION - AMENDED TO COUNCIL R.O.I. NOTICE - ISSUED FOR COUNCIL APPROVAL (OPW).	23/08/2011
P1	PRELIMINARY - NOT FOR CONSTRUCTION - ISSUED FOR COUNCIL APPROVAL (OPW).	24/05/2011

Drawn JHS	In Association With PARKSIDE DEVELOPMENT PTY LTD	OPEN DRAIN LAYOUT PLAN & DETAILS
Date 24/06/2011	STAGE 1, 21 ALLOTMENT RESIDENTIAL SUBDIVISION BRENDALE WEST SOMERTON STREET, DEERAGUN	
Checked		Drawing Number PARK0001/18
Approved		Issue B
COPYRIGHT ©		



**ACCEPTED
AS CONSTRUCTED**



LEGEND

- 12.000* - Surface level.
- - Direction of fall.
- - - - - Top of batter.
- - - - - Toe of batter.
- - - - - Subsoil drainage.

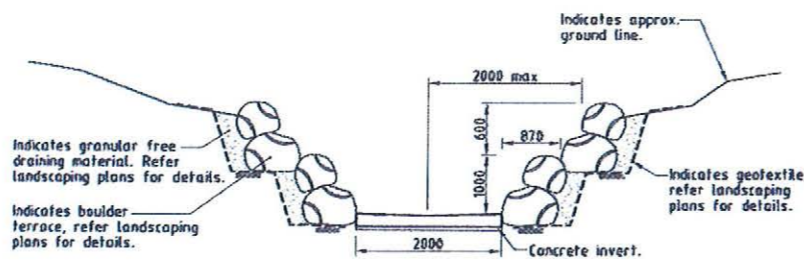
PART LAYOUT PLAN
Scale 'A'

CROSS SECTIONS
Scale 'C'

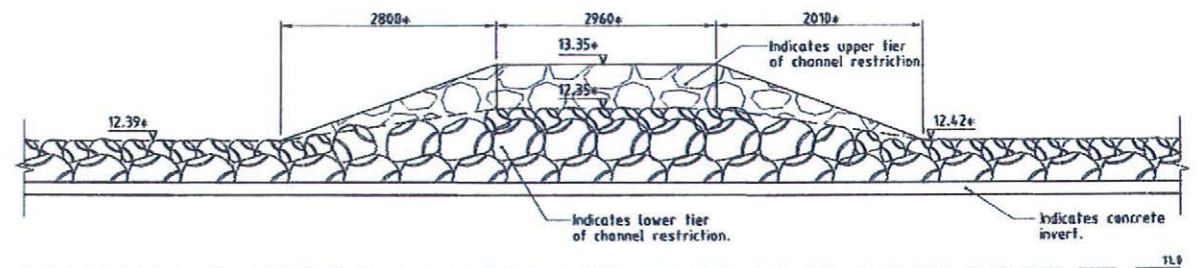
AS CONSTRUCTED

BRAZIER & MOTTI PTY LTD (ACN 066 411 041) 595 FLINDERS STREET, TOWNSVILLE HEREBY CERTIFY THAT THIS DRAWING ACCURATELY AND CORRECTLY DESCRIBES AND RECORDS THE NATURE AND THE LOCATION OF THE WORKS DEPICTED BY ASTERISKS (*) HEREON AS THEY HAVE BEEN CONSTRUCTED FOR SUBDIVISION

DIRECTOR
DEPUTY SURVEYOR AND DIRECTOR
DATED THIS DAY 7 OF July 2012
SEAL OF
ACN 066 411 041



TYPICAL CHANNEL RESTRICTION
Scale 'B'



SECTION 1
Scale 'B'

REAL PROPERTY DESCRIPTION

Lot 2 on SP 232875
Parish of BOHLE
County of ELPHINSTONE
Geaney Lane - Deeragun

In Association with:-

surveying | town planning | project management | mapping and GIS
Brazier Motti Pty Ltd (ACN 066 411 041)
595 Flinders St, Townsville, Q. 4810
Phone: 07 4772 1144, Fax: 07 4772 2557, Email: townsville@braziermotti.com.au

BASE SURVEY
Brazier Motti (86092/091)
TRUNCATED COORDINATES
E 8,000, N 0,000
EQUIVALENT TO
E 468000, N 7800000

LEVEL DATUM A.H.D.
Horizontal Datum GDA '94 Zone 55
Refer P.M. 17233 RL, 13.514
Bull & washer to kerb.
Intersection SOMERTON/DUNDABELLA



THE ORIGINAL OF THIS DOCUMENT IS COMPLETED TO THE SCALE NOTED. AS REPRODUCTION CAN DISTORT SIZE & SHAPE USE ONLY THE DIMENSIONS PROVIDED BY ARCHITECTURAL &/OR ENGINEERING DRAWINGS. VERIFY DIMENSIONS ON SITE BEFORE CONSTRUCTION.

All work is carried out in accordance with LOCAL AUTHORITIES standard details.

* - Indicates as constructed information.

Civil & Structural Engineers
50 Punari Street, Currarong 4812
Phone: 07 4725 5550 Fax: 07 4725 5850
Email: mail@nceng.com.au
Mikael Messer & Associates Pty. Ltd.
ACN 100 817 356

B	AMENDED TO AS CONSTRUCTED.	07/08/2012
A	ISSUED FOR CONSTRUCTION.	08/11/2011
P2	PRELIMINARY - NOT FOR CONSTRUCTION - ISSUED FOR COUNCIL APPROVAL (DPW).	24/04/2011
P1	PRELIMINARY - NOT FOR CONSTRUCTION - ISSUED FOR COUNCIL APPROVAL (DPW).	18/05/2011
Issue	Description	Date
Drawn JHS	In Association With PARKSIDE DEVELOPMENT PTY LTD	
Date 10/05/2011	STAGE 1, 21 ALLOTMENT RESIDENTIAL SUBDIVISION BRENDALE WEST SOMERTON STREET, DEERAGUN	
Checked [Signature]		
Approved [Signature]		
COPYRIGHT ©		
OPEN DRAIN CROSS SECTIONS & CHANNEL RESTRICTION DETAILS		
Drawing Number	PARK0001/19	Issue
		B