

LEGEND

2/1	- Pit No. 2/Drainline No. 1
12.000+	- Surface levels.
12.000+	- Surface levels.
Q50 WSL 13.48	- Q50 water surface levels.
Q100 WSL 13.50	- Q100 water surface levels.
→	- Stormwater flow arrow.
- - -	- RP boundary.
—+—	- Top of batter.
—+—	- Toe of batter.
—+—	- Stormwater drain line.
—+—	- Stormwater drain line.
—+—	- Subsoil drainage.
—+—	- Fence.

NOTES:

- All Q50 flows remain within the road reserve & open drain boundaries.

AS CONSTRUCTED

BRAZIER & MOTTI PTY.LTD. (ACN 066 411 041), 595 FLINDERS STREET, TOWNSVILLE HEREBY CERTIFY THAT THIS DRAWING ACCURATELY AND CORRECTLY DESCRIBES AND RECORDS THE NATURE AND THE LOCATION OF THE WORKS DEPICTED BY ASTERISKS (*) HEREON AS THEY HAVE BEEN CONSTRUCTED FOR SUBDIVISION

COMMON DIRECTOR
REGISTERED SURVEYOR AND DIRECTOR

DATED THIS DAY 27 of April 2012

ACN 066 411 041

Q50 STORMWATER LEVELS

Road Name	Chainage	Description	Q50 Level	Q100 Level
Somerton Street	159.557	Pit 1/1	14.36	14.37
	189.271	Pit 2/1	14.28	14.37
	229.667	Pit 3/1	14.50	14.51
	292.744	Pit 6/1	14.88	14.88
	362.658	Pit 9/1	15.11	15.11
	364.487	Pit 10/1	15.11	15.11
Tarrango Link	385.494	End of Construction	15.17	15.18
	15.297	Pit 7/1	15.07	15.08
	16.656	Pit 8/1	15.07	15.08
	46.504	Pit 1/3	15.07	15.08
Gotham Loop	109.330	Crest	15.15	15.16
	41.324	Pit 8/2	14.64	14.64

REAL PROPERTY DESCRIPTION

Lot 2 on SP 232875
Parish of BOHLE
County of ELPHINSTONE
Geaney Lane - Deeragun

In Association with:-

brazier motti

surveying | town planning | project management | mapping and GIS

Brazier Motti Pty Ltd (ACN 066 411 041)
595 Flinders St, Townsville, Q. 4810
Phone: 07 4772 1144, Fax: 07 4772 2557, Email: townsville@braziermotti.com.au

LAYOUT PLAN

* - Indicates as constructed information.

Scale

LEVEL DATUM A.H.D.
Horizontal Datum GDA' 94 Zone 55
Refer P.M. 177233 RL. 13.514
Bolt & washer in kerb.
Intersection SOMERTON/DUNDABELLA

BASE SURVEY
Brazier Motti (06092/001)
TRUNCATED COORDINATES
E 0.000, N 0.000
EQUIVALENT TO
E 466000, N 7800000

THE ORIGINAL OF THIS DOCUMENT IS COMPLETED TO THE SCALE NOTED.
AS REPRODUCTION CAN DISTORT SIZE & SHAPE USE ONLY THE
DIMENSIONS PROVIDED ON ARCHITECTURAL &/OR ENGINEERING DRAWINGS.
VERIFY DIMENSIONS ON SITE BEFORE CONSTRUCTION.

All work is carried out in accordance with LOCAL AUTHORITIES standard details.

REFER TO DRAWING PARK0001/06 FOR ROAD TYPICAL SECTIONS.

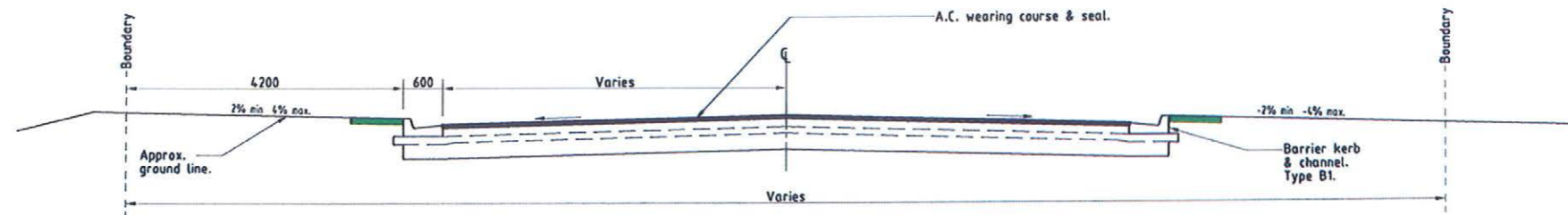
NORTHERN CONSULTING engineers

Civil & Structural Engineers
50 Punari Street, Currajong 4812
Phone: 07 4725 5550 Fax: 07 4725 5850
Email: mail@nconsng.com.au
Milton Messer & Associates Pty. Ltd.
ACN 100 817 356

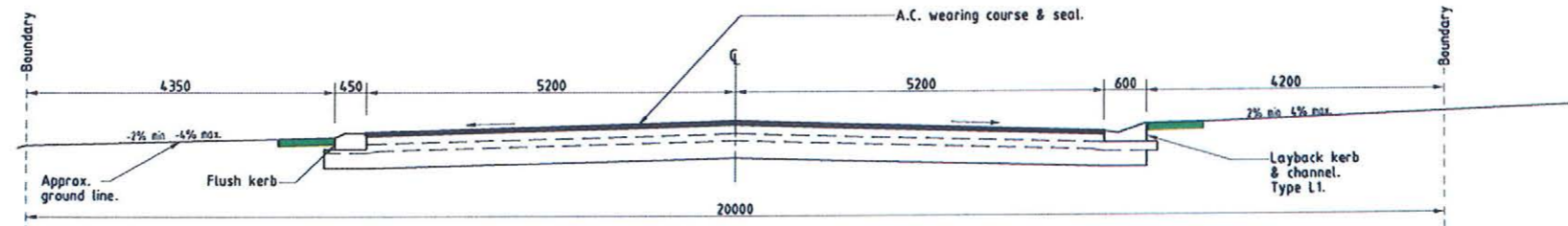
Issue	Description	Date
C	AMENDED TO AS CONSTRUCTED (EARLY PLAN OF SURVEY RELEASE).	27/04/2012
B	AMENDED TO AS CONSTRUCTED (EARLY PLAN OF SURVEY RELEASE).	26/04/2012
A	ISSUED FOR CONSTRUCTION.	08/12/2011
P2	PRELIMINARY - NOT FOR CONSTRUCTION - AMENDED TO COUNCIL R.O.L. NOTICE - ISSUED FOR COUNCIL APPROVAL (OPW).	23/08/2011
P1	PRELIMINARY - NOT FOR CONSTRUCTION - ISSUED FOR COUNCIL APPROVAL (OPW).	24/06/2011

Drawn JHS Date 24/06/2011	In Association With PARKSIDE DEVELOPMENT PTY LTD	LAYOUT PLAN, ROADWORKS & STORMWATER
Checked	STAGE 1, 21 ALLOTMENT RESIDENTIAL SUBDIVISION	
Approved	BRENDALE WEST	
COPYRIGHT ©	SOMERTON STREET, DEERAGUN	
Drawing Number		PARK0001/03
Issue		C

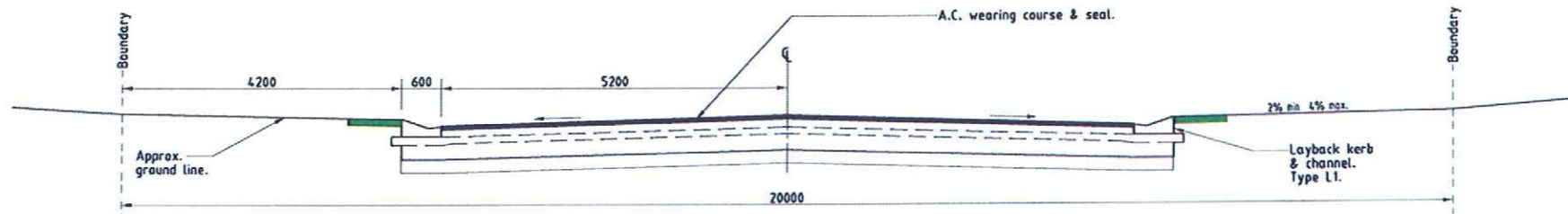
ACCEPTED AS CONSTRUCTED



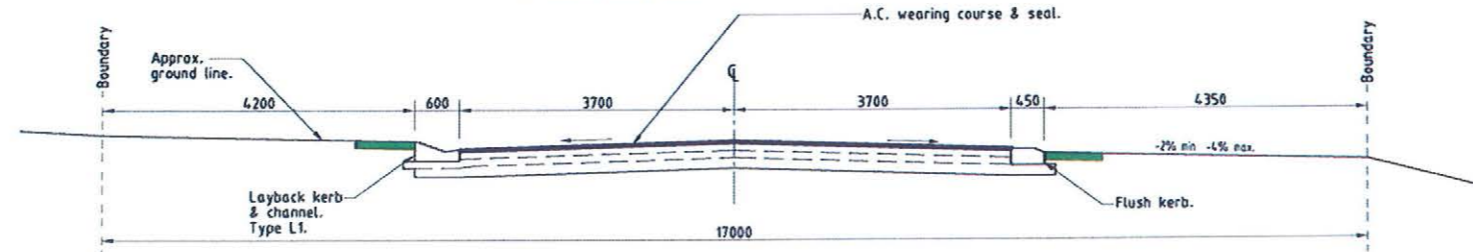
TYPICAL SECTION - SOMERTON STREET
Ch 98.466 to Ch 160.282



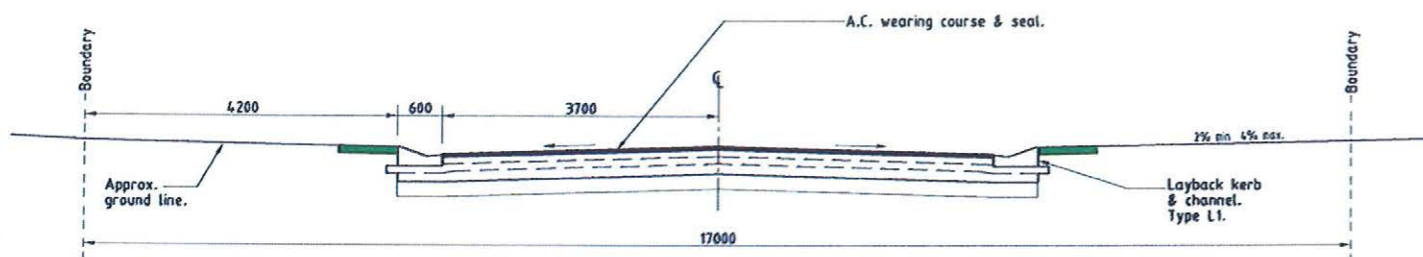
TYPICAL SECTION - SOMERTON STREET
Ch 160.282 to Ch 362.849



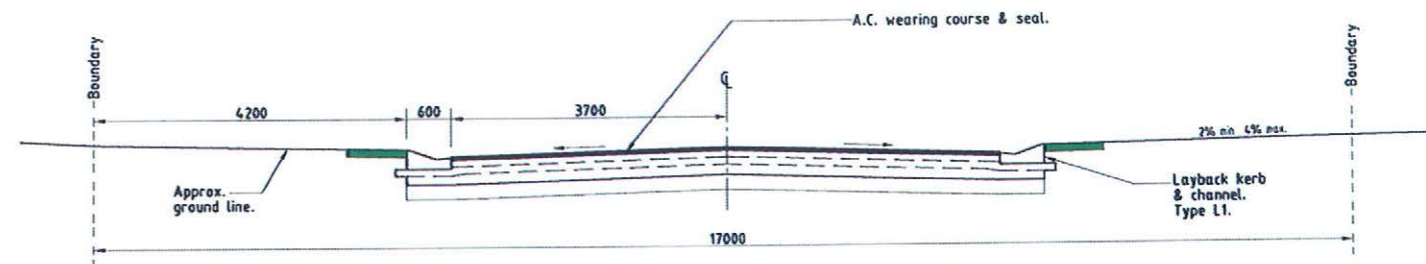
TYPICAL SECTION - SOMERTON STREET
Ch 362.849 to Ch 385.494



TYPICAL SECTION - ASHWOOD GROVE



TYPICAL SECTION - TARRANGO LINK



TYPICAL SECTION - GOTHAM LOOP

AS CONSTRUCTED
Northern Consulting Engineers hereby certify that the works detailed on this drawing have been constructed to the dimensions and levels detailed.

[Signature]
Derek Robert Conley Saw Date: 26-4-2012

REAL PROPERTY DESCRIPTION

Lot 2 on SP 232875
Parish of BOHLE
County of ELPHINSTONE
Geaney Lane - Deeragun

In Association with:-



surveying | town planning | project management | mapping and GIS

Brazier Mott Pty Ltd (ACN 066 411 041)
595 Flinders St. Townsville, Q. 4810
Phone: 07 4772 1144, Fax: 07 4772 2557, Email: townsvic@braziermott.com.au

**ACCEPTED
AS CONSTRUCTED**

BASE SURVEY
Brazier Mott (06692/091)
TRUNCATED COORDINATES
E 6,000, N 0,000
EQUIVALENT TO
E 4,66000, N 7800000

LEVEL DATUM A.M.D.
Horizontal Datum: GDA' 94 Zone 55
Refer P.M. 177233 RL. 13.514
Bolt & washer in kerb.
Intersection SOMERTON/DUNDABELLA



THE ORIGINAL OF THIS DOCUMENT IS COMPLETED TO THE SCALE NOTED.
AS REPRODUCTION CAN DISTORT SIZE & SHAPE USE ONLY THE
DIMENSIONS PROVIDED ON ARCHITECTURAL &/OR ENGINEERING DRAWINGS.
VERIFY DIMENSIONS ON SITE BEFORE CONSTRUCTION.

All work is carried out in accordance with LOCAL AUTHORITIES standard details.

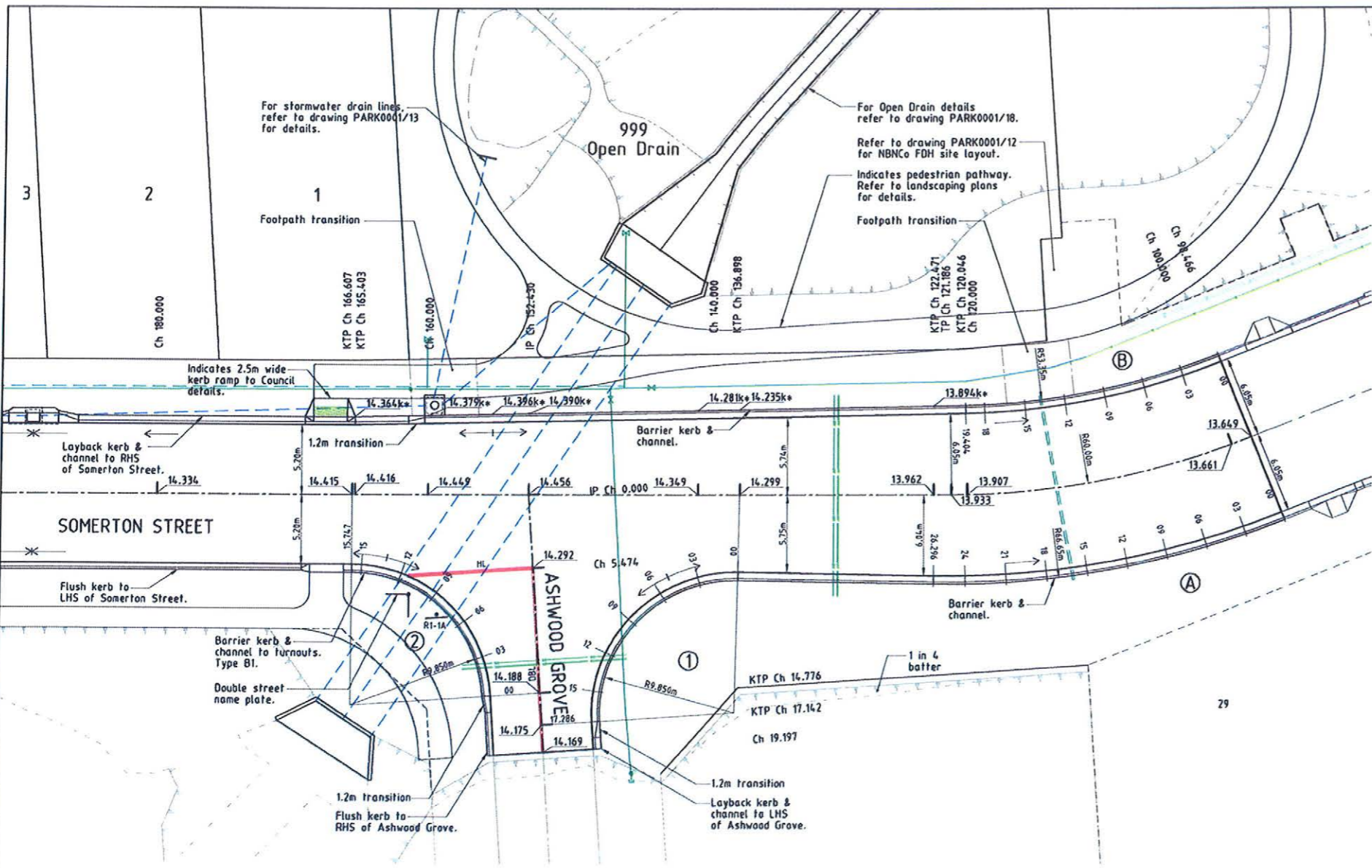


Civil & Structural Engineers
50 Punari Street, Currango 4812
Phone: 07 4725 5550 Fax: 07 4725 5850
Email: mail@nceng.com.au
Milton Messer & Associates Pty. Ltd.
ACN 100 817 356

REFER TO DRAWING PARK001/12 FOR FLUSH KERB DETAILS.

Issue	Description	Date
B	AMENDED TO AS CONSTRUCTED (EARLY PLAN OF SURVEY RELEASE).	26/04/2012
A	ISSUED FOR CONSTRUCTION.	08/12/2011
P1	PRELIMINARY - NOT FOR CONSTRUCTION - ISSUED FOR COUNCIL APPROVAL (OPW).	24/06/2011

Drawn JHS Date 24/06/2011 Checked [Signature] Approved [Signature] COPYRIGHT ©	In Association With PARKSIDE DEVELOPMENT PTY LTD STAGE 1, 21 ALLOTMENT RESIDENTIAL SUBDIVISION BRENDALE WEST SOMERTON STREET, DEERAGUN	ROAD TYPICAL SECTIONS Drawing Number PARK001/06 Issue B
--	--	---



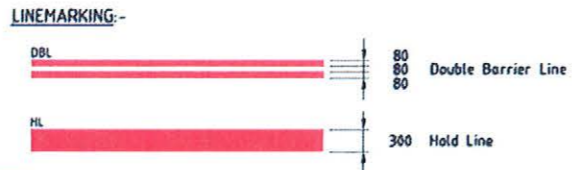
LAYOUT PLAN
Scale 'A'

- LEGEND**
- 12.000+ - Surface level.
 - 12.000k+ - Back of kerb level.
 - - Direction of fall.
 - - Top of batter.
 - - Stormwater drain line.
 - - Water main.
 - - Poly water main.
 - - Irrigation conduits.
 - - Water main.

SIGNAGE:-

CODE	EXAMPLE	DESCRIPTION
R1-1A		Stop

All linemarking & signage is installed in accordance with the M.U.T.C.D.



No.	CORNER EDGE A	CORNER EDGE B
CHGE.	BACK OF KERB LEVEL	BACK OF KERB LEVEL
00	13.525*	13.522*
03	13.545*	13.538*
06	13.570*	13.590*
09	13.625*	13.648*
12	13.721*	13.718*
15	13.761*	13.772*
18	13.801*	13.822*
19.404		13.843*
21	13.830*	
24	13.856*	
26.296	13.887*	

ACCEPTED AS CONSTRUCTED

All work is carried out in accordance with LOCAL AUTHORITIES standard details. * - Indicates as constructed information.

Indicates back of kerb.

DATUM RL: 12.600	BACK OF KERB LEVELS	PEGGED CHAINAGE
0.000	14.274*	0.000
3.000	14.261*	3.000
6.000	14.255*	6.000
9.000	14.204*	9.000
12.000	14.195*	12.000
15.000	14.176*	15.000
17.716	14.165*	17.716

TURNOUT 1
Scale 'B' - Horizontal
Scale 'C' - Vertical

Indicates back of kerb.

DATUM RL: 12.600	BACK OF KERB LEVELS	PEGGED CHAINAGE
0.000	14.172*	0.000
3.000	14.208*	3.000
6.000	14.251*	6.000
9.000	14.298*	9.000
12.000	14.347*	12.000
15.000	14.394*	15.000
17.712	14.394*	17.712

TURNOUT 2
Scale 'B' - Horizontal
Scale 'C' - Vertical

REAL PROPERTY DESCRIPTION

Lot 2 on SP 232875
Parish of BOHLE
County of ELPHINSTONE
Geaney Lane - Deeragun

In Association with:-

surveying | town planning | project management | mapping and GIS
Brazier Motti Pty Ltd (ACN 066 411 041)
593 Flinders St, Townsville, Q. 4810
Phone: 07 4772 1144, Fax: 07 4772 2557, Email: townsville@braziermotti.com.au

AS CONSTRUCTED

BRAZIER & MOTTI PTY LTD (ACN 066 411 041), 593 FLINDERS STREET, TOWNSVILLE HEREBY CERTIFY THAT THIS DRAWING ACCURATELY AND CORRECTLY DESCRIBES AND RECORDS THE NATURE AND THE LOCATION OF THE WORKS DEPICTED BY ASTERISKS (*) HEREON AS THEY HAVE BEEN CONSTRUCTED FOR SUBDIVISION

DIRECTOR
REGISTERED SURVEYOR AND DIRECTOR

DATED THIS DAY 27/06/2011

BASE SURVEY
Brazier Motti (06092/091)
TRUNCATED COORDINATES
E 5000, N 6000
EQUVALENT TO
E 460000, N 7800000

LEVEL DATUM A.M.D.
Horizontal Datum GDA' 84 Zone 55
Refer P.F. 177233 RL. 13.514
Bolt & washer in kerb.
Intersection SOMERTON/DUNDABELLA

Scale 'A' 0 2 4 6 8m

Scale 'B' 0 1 2 3 4m

Scale 'C' 0 0.2 0.4 0.6 0.8m

THE ORIGINAL OF THIS DOCUMENT IS COMPLETED TO THE SCALE NOTED. AS REPRODUCTION CAN DISTORT SIZE & SHAPE USE ONLY THE DIMENSIONS PROVIDED ON ARCHITECTURAL &/OR ENGINEERING DRAWINGS. VERIFY DIMENSIONS ON SITE BEFORE CONSTRUCTION.

NORTHERN CONSULTING engineers

Civil & Structural Engineers
50 Punari Street, Currajong 4812
Phone: 07 4725 5550 Fax: 07 4725 5850
Email: mail@nceng.com.au
Milton Mosser & Associates Pty. Ltd.
ACN 100 817 358

AMENDED TO AS CONSTRUCTED (EARLY PLAN OF SURVEY RELEASE).
C ISSUED FOR CONSTRUCTION - CONTOURS UPDATED.
B ISSUED FOR CONSTRUCTION.
A PRELIMINARY - NOT FOR CONSTRUCTION - AMENDED TO COUNCIL R.O.L. NOTICE - ISSUED FOR COUNCIL APPROVAL (OPW).
P2 PRELIMINARY - NOT FOR CONSTRUCTION - AMENDED TO COUNCIL APPROVAL (OPW).
P1 PRELIMINARY - NOT FOR CONSTRUCTION - ISSUED FOR COUNCIL APPROVAL (OPW).

Issue	Description	Date
C	AMENDED TO AS CONSTRUCTED (EARLY PLAN OF SURVEY RELEASE).	26/04/2012
B	ISSUED FOR CONSTRUCTION - CONTOURS UPDATED.	08/12/2011
A	ISSUED FOR CONSTRUCTION.	17/11/2011
P2	PRELIMINARY - NOT FOR CONSTRUCTION - AMENDED TO COUNCIL R.O.L. NOTICE - ISSUED FOR COUNCIL APPROVAL (OPW).	23/08/2011
P1	PRELIMINARY - NOT FOR CONSTRUCTION - ISSUED FOR COUNCIL APPROVAL (OPW).	24/05/2011

Drawn: JHS
Date: 24/06/2011
Checked: [Signature]
Approved: [Signature]

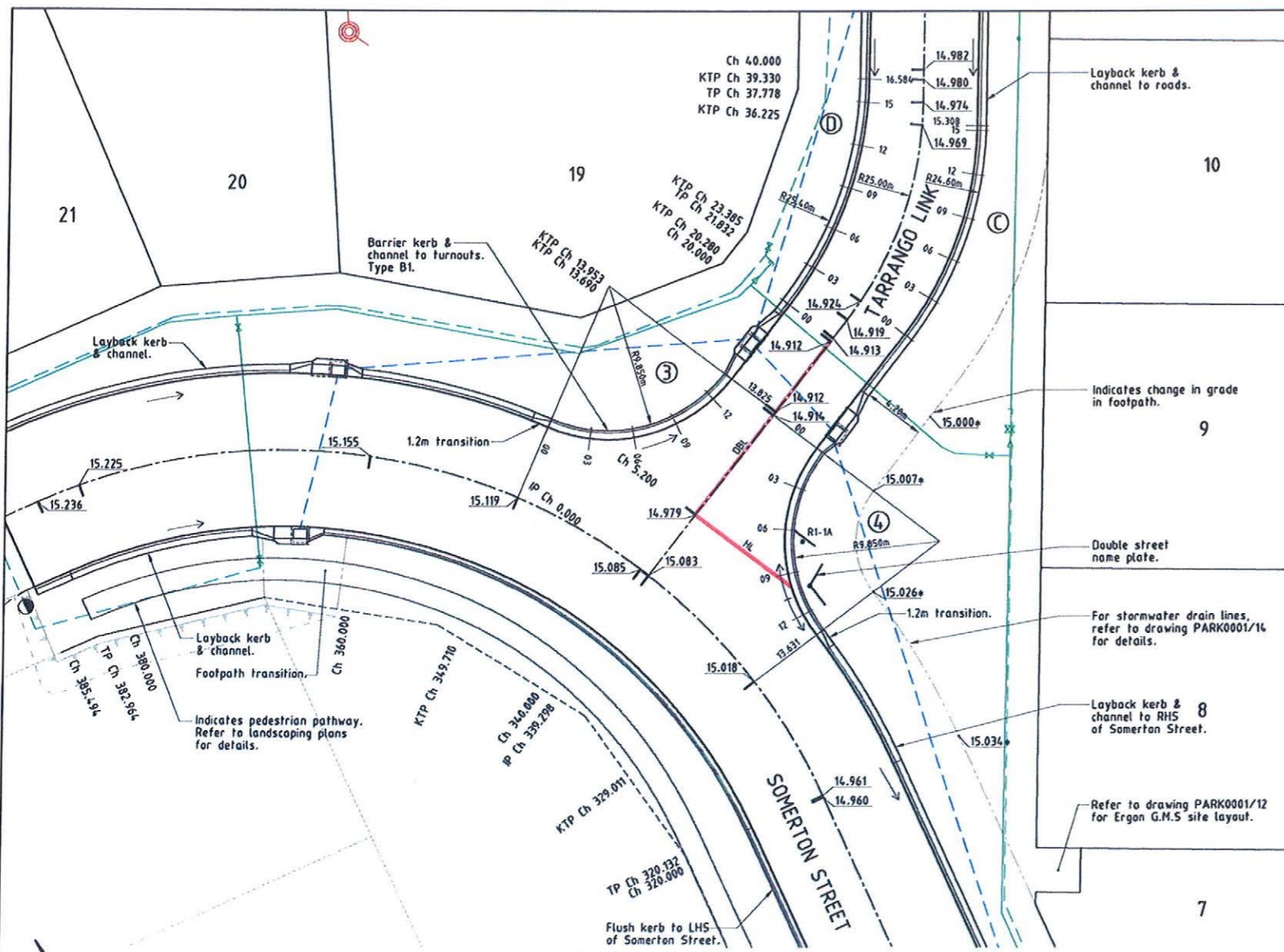
In Association with
PARKSIDE DEVELOPMENT PTY LTD

STAGE 1, 21 ALLOTMENT RESIDENTIAL SUBDIVISION BRENDALE WEST SOMERTON STREET, DEERAGUN

INTERSECTION & TRANSITION DETAILS

Drawing Number: **PARK0001/09**

Issue: **C**



LAYOUT PLAN
Scale 'A'

Indicates back of kerb.

DATUM RL: 13.800					
BACK OF KERB LEVELS	15.071*	15.044*	14.995*	14.977*	14.952*
PEGGED CHAINAGE	0.000	3.000	6.000	9.000	12.000

TURNOUT 3
Scale 'B' - Horizontal
Scale 'C' - Vertical

Indicates back of kerb.

DATUM RL: 13.800					
BACK OF KERB LEVELS	14.979*	14.954*	14.905*	14.889*	14.864*
PEGGED CHAINAGE	0.000	3.000	6.000	9.000	12.000

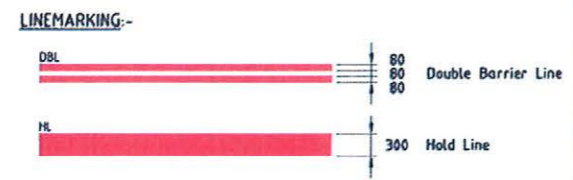
TURNOUT 4
Scale 'B' - Horizontal
Scale 'C' - Vertical

- LEGEND**
- 12.000+ - Surface level.
 - - Direction of fall.
 - - - - Stormwater drain line.
 - - - - Sewer main.
 - ⊙ - Sewer manhole.
 - - - - Water main.
 - - - - Poly water main.

SIGNAGE:-

CODE	EXAMPLE	DESCRIPTION
R1-1A		Stop

All linemarking & signage is installed in accordance with the M.U.T.C.D.



No.	CORNER EDGE C	CORNER EDGE D
00	14.910*	14.931*
03	14.918*	14.947*
06	14.933*	14.962*
09	14.942*	14.976*
12	14.970*	14.985*
15	14.995*	15.000*
15.308	14.999*	
16.584		15.007*

ACCEPTED AS CONSTRUCTED

REAL PROPERTY DESCRIPTION

Lot 2 on SP 232875
Parish of BOHLE
County of ELPHINSTONE
Geaney Lane - Deeragun

In Association with:-

surveying | town planning | project management | mapping and GIS
Brazier Motti Pty Ltd (ACN 066 411 041)
595 Flinders St, Townsville, Q. 4810
Phone: 07 4772 1144, Fax: 07 4772 2557, Email: townsville@braziermotti.com.au

AS CONSTRUCTED

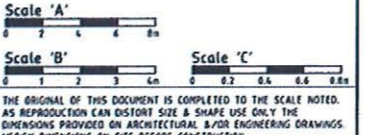
BRAZIER & MOTTI PTY LTD, (ACN 066 411 041), 595 FLINDERS STREET, TOWNSVILLE HEREBY CERTIFY THAT THIS DRAWING ACCURATELY AND CORRECTLY DESCRIBES AND RECORDS THE NATURE AND THE LOCATION OF THE WORKS DEPICTED BY ASTERISKS (*) HEREON AS THEY HAVE BEEN CONSTRUCTED FOR SUBDIVISION

DIRECTOR
REGISTERED SURVEYOR AND DIRECTOR

DATED THIS DAY 22/06/2011 AT 70 A.A.

BASE SURVEY
Brazier Motti (06092/091)
TRUNCATED COORDINATES
E 8,000, N 0,000
EQUIVALENT TO
E 468000, N 7800000

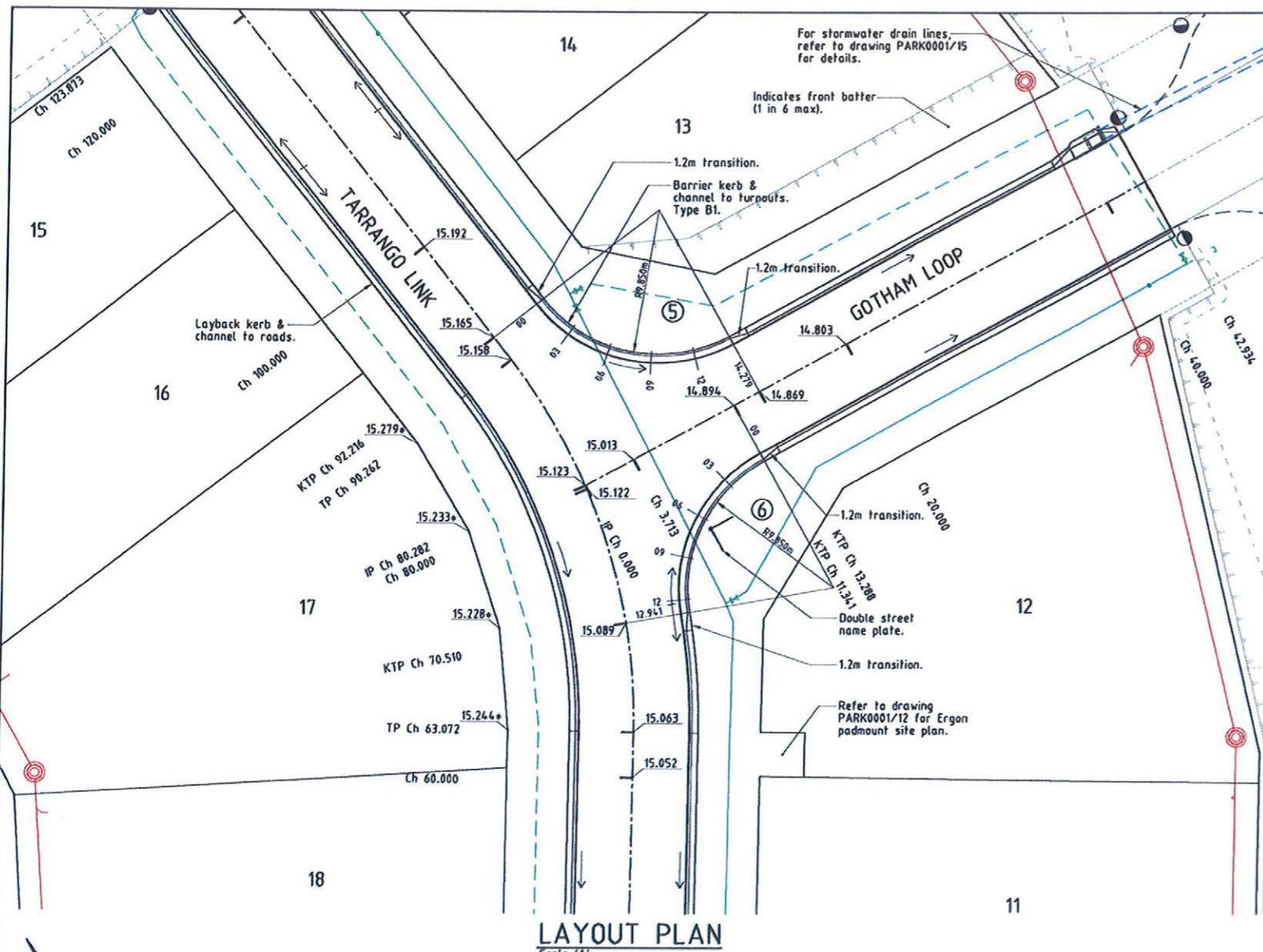
LEVEL DATUM A.M.D.
Horizontal Datum GDA '94 Zone 55
Refer P.P.1, 17733 RL. 13.516
0.011 & weather in kerb.
Intersection SOMERTON/DUNDELLA



All work is carried out in accordance with LOCAL AUTHORITIES standard details. * - Indicates as constructed information.

Civil & Structural Engineers
50 Punari Street, Currajong 4812
Phone: 07 4725 5550 Fax: 07 4725 5850
Email: mail@nceng.com.au
Milton Mosser & Associates Pty. Ltd.
ACN 100 817 355

B A P1	AMENDED TO AS CONSTRUCTED (EARLY PLAN OF SURVEY RELEASE). ISSUED FOR CONSTRUCTION. PRELIMINARY - NOT FOR CONSTRUCTION - ISSUED FOR COUNCIL APPROVAL (OPW).	26/04/2012 08/12/2011 24/06/2011
Issue	Description	Date
Drawn JHS Date 24/06/2011 Checked Approved	In Association With PARKSIDE DEVELOPMENT PTY LTD STAGE 1, 21 ALLOTMENT RESIDENTIAL SUBDIVISION BRENDALE WEST SOMERTON STREET, DEERAGUN	INTERSECTION & CORNER WIDENING DETAILS
Drawing Number PARK0001/10		Issue B



Indicates back of kerb.

DATUM RL: 13.800						
BACK OF KERB LEVELS	15.000	15.100	15.200	15.300	15.400	15.500
PEGGED CHAINAGE	0.000	3.000	6.000	9.000	12.000	15.000

TURNOUT 5
Scale 'B' - Horizontal
Scale 'C' - Vertical

Indicates back of kerb.

DATUM RL: 13.800						
BACK OF KERB LEVELS	14.900	14.950	15.000	15.050	15.100	15.150
PEGGED CHAINAGE	0.000	3.000	6.000	9.000	12.000	15.000

TURNOUT 6
Scale 'B' - Horizontal
Scale 'C' - Vertical

- LEGEND**
GENERAL:-
- 12.000+ - Surface level.
 - - Direction of fall.
 - - Top of batter.
 - - Stormwater drain line.
 - - Sewer main.
 - - Sewer manhole.
 - - Water main.
 - - Poly water main.

AS CONSTRUCTED

BRAZIER & MOTTI PTY LTD (ACN 066 411 041), 595 FLINDERS STREET, TOWNSVILLE HEREBY CERTIFY THAT THIS DRAWING ACCURATELY AND CORRECTLY DESCRIBES AND RECORDS THE NATURE AND THE LOCATION OF THE WORKS DEPICTED BY ASTERISKS (*) HEREON AS THEY HAVE BEEN CONSTRUCTED FOR SUBDIVISION

[Signature]
DIRECTOR
REGISTERED SURVEYOR AND DIRECTOR

DATED THIS DAY 27th of April 2011

REAL PROPERTY DESCRIPTION

Lot 2 on SP 232875
Parish of BOHLE
County of ELPHINSTONE
Geaney Lane - Deeragun

In Association with:-

surveying | town planning | project management | mapping and GIS
Brazier Motti Pty Ltd (ACN 066 411 041)
595 Flinders St, Townsville, Q. 4810
Phone: 07 4772 1144, Fax: 07 4772 2557, Email: townsville@braziermotti.com.au

**ACCEPTED
AS CONSTRUCTED**

BASE SURVEY
Brazier Motti (06092/091)
TRUNCATED COORDINATES
E 4800, N 0.000
EQUIVALENT TO
E 460000, N 7800000

LEVEL DATUM A.M.D.
Horizontal Datum GDA' 94 Zone 55
Refer P.M. 177233 RL, 13.514
Bolt & washer in kerb.
Intersection SOMERTON/DUNDABELLA

Scale 'A' 0 2 4 6 8

Scale 'B' 0 1 2 3 4 5

Scale 'C' 0 0.2 0.4 0.6 0.8

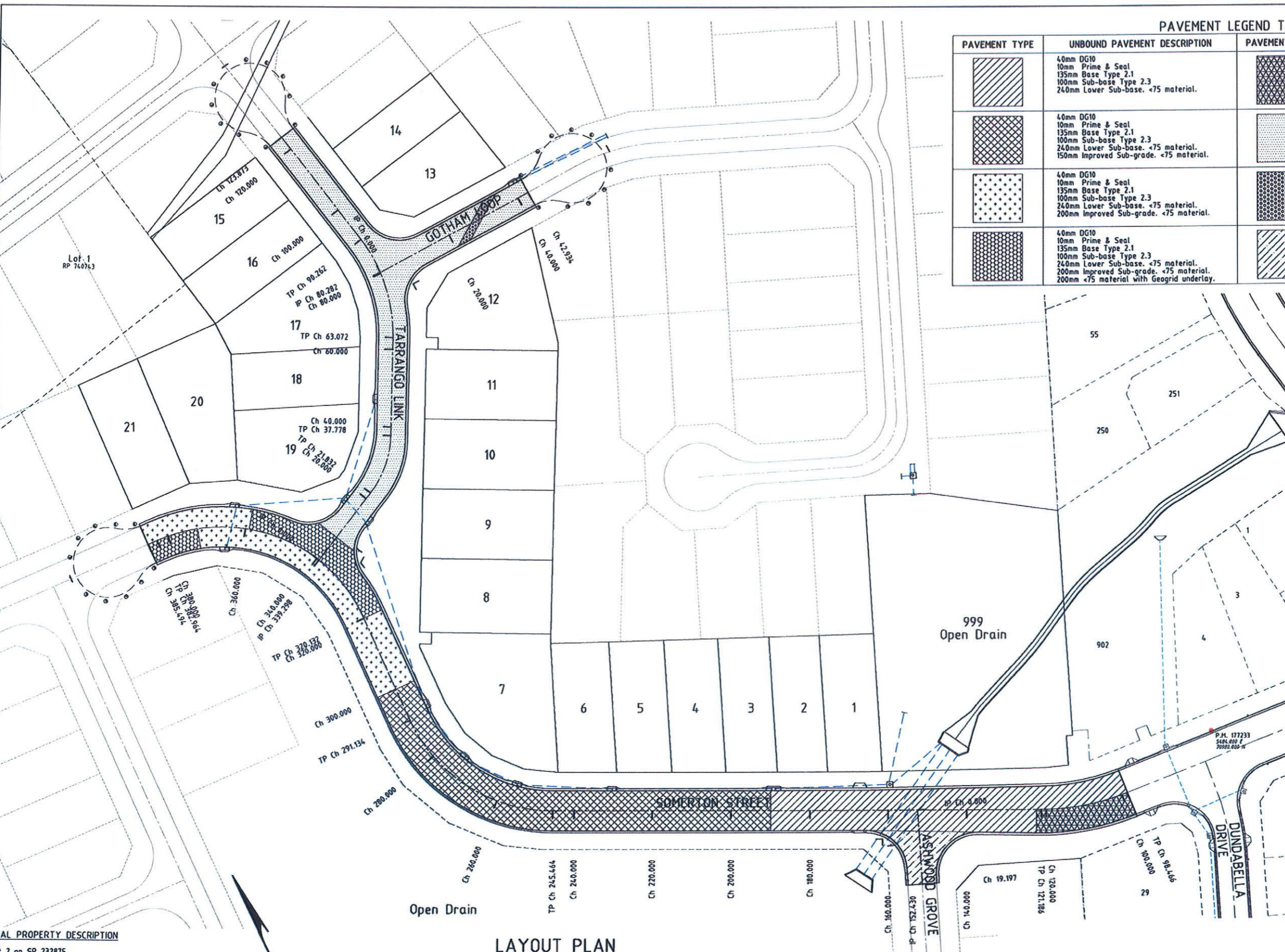
THE ORIGINAL OF THIS DOCUMENT IS COMPLETED TO THE SCALE NOTED. AS REPRODUCTION CAN DISTORT SIZE & SHAPE USE ONLY THE DIMENSIONS PROVIDED ON ARCHITECTURAL &/OR ENGINEERING DRAWINGS. VERIFY DIMENSIONS ON SITE BEFORE CONSTRUCTION.

All work is carried out in accordance with LOCAL AUTHORITIES standard details. '* - Indicates as constructed information.

Civil & Structural Engineers
50 Punari Street, Currajong 4812
Phone: 07 4725 5550 Fax: 07 4725 5850
Email: mail@nceng.com.au
Milton Meeber & Associates Pty. Ltd.
ACN 100 817 358

B	AMENDED TO AS CONSTRUCTED (EARLY PLAN OF SURVEY RELEASE).	26/04/2012
A	ISSUED FOR CONSTRUCTION.	08/12/2011
P2	PRELIMINARY - NOT FOR CONSTRUCTION - AMENDED TO COUNCIL R.O.L. NOTICE - ISSUED FOR COUNCIL APPROVAL (OPW).	23/08/2011
P1	PRELIMINARY - NOT FOR CONSTRUCTION - ISSUED FOR COUNCIL APPROVAL (OPW).	24/06/2011

Issue	Description	Date
Drawn JHS Date 24/06/2011	In Association With PARKSIDE DEVELOPMENT PTY LTD	INTERSECTION DETAILS
Checked JHS Approved	STAGE 1, 21 ALLOTMENT RESIDENTIAL SUBDIVISION BRENDALE WEST SOMERTON STREET, DEERAGUN	
Drawing Number PARK001/11		Issue B



PAVEMENT TYPE	UNBOUND PAVEMENT DESCRIPTION	PAVEMENT TYPE	UNBOUND PAVEMENT DESCRIPTION
	40mm DG10 10mm Prime & Seal 135mm Base Type 2.1 100mm Sub-base Type 2.3 240mm Lower Sub-base. <75 material.		40mm DG10 10mm Prime & Seal 135mm Base Type 2.1 100mm Sub-base Type 2.3 240mm Lower Sub-base. <75 material. Geogrid underlay.
	40mm DG10 10mm Prime & Seal 135mm Base Type 2.1 100mm Sub-base Type 2.3 240mm Lower Sub-base. <75 material. 150mm Improved Sub-grade. <75 material.		30mm DG10 10mm Prime & Seal 100mm Base Type 2.1 100mm Sub-base Type 2.3 140mm Lower Sub-base. <75 material. 200mm Improved Sub-grade. <75 material.
	40mm DG10 10mm Prime & Seal 135mm Base Type 2.1 100mm Sub-base Type 2.3 240mm Lower Sub-base. <75 material. 200mm Improved Sub-grade. <75 material.		30mm DG10 10mm Prime & Seal 100mm Base Type 2.1 100mm Sub-base Type 2.3 140mm Lower Sub-base. <75 material. 200mm Improved Sub-grade. <75 material. 200mm <75 material with Geogrid underlay.
	40mm DG10 10mm Prime & Seal 135mm Base Type 2.1 100mm Sub-base Type 2.3 240mm Lower Sub-base. <75 material. 200mm Improved Sub-grade. <75 material.		30mm DG10 10mm Prime & Seal 100mm Base Type 2.1 100mm Sub-base Type 2.3 140mm Lower Sub-base. <75 material.

AS CONSTRUCTED
 Northern Consulting Engineers hereby certify that the works detailed on this drawing have been constructed to the dimensions and levels detailed.
 Derek Robert Conley Saw
 Date 26-4-2012

REAL PROPERTY DESCRIPTION

Lot 2 on SP 232875
 Parish of BOHLE
 County of ELPHINSTONE
 Geaney Lane - Deeragun

In Association with:-

 surveying | town planning | project management | mapping and GIS
 Brazier Motti Pty Ltd (ACN 056 411 041)
 595 Flinders St, Townsville, Q. 4810
 Phone: 07 4772 1144, Fax: 07 4772 2557, Email: townsville@braziermotti.com.au

ACCEPTED AS CONSTRUCTED

BASE SURVEY
 Brazier Motti (08092/991)
 TRUNCATED COORDINATES
 E 9.600, N 6.000
 EQUIVALENT TO
 E 460000, N 7800000

LEVEL DATUM A.M.D.
 Horizontal Datum GDA' 94 Zone 55
 Refer P.M. 177233 RL. 13.514
 Bolt & washer in kerb.
 Intersection SOMERTON/DUNDABELLA

Scale
 0 5 10 15 20m
 THE ORIGINAL OF THIS DOCUMENT IS COMPLETED TO THE SCALE NOTED.
 AS REPRODUCTION CAN DISTORT SIZE & SHAPE USE ONLY THE
 DIMENSIONS PROVIDED ON ARCHITECTURAL &/OR ENGINEERING DRAWINGS.
 VERIFY DIMENSIONS ON SITE BEFORE CONSTRUCTION.

All work is carried out in accordance with LOCAL AUTHORITIES standard details.

NORTHERN CONSULTING
 engineers

Civil & Structural Engineers
 50 Punari Street, Currajong 4812
 Phone: 07 4725 5550 Fax: 07 4725 5850
 Email: mail@nceng.com.au
 Milton Mosser & Associates Pty. Ltd.
 ACN 100 817 356

A	AMENDED TO AS CONSTRUCTED (EARLY PLAN OF SURVEY RELEASED).	26/04/2012
Issue	Description	Date
Drawn JHS	In Association With PARKSIDE DEVELOPMENT PTY LTD	
Date 26/04/2012	STAGE 1, 21 ALLOTMENT RESIDENTIAL SUBDIVISION BRENDALE WEST SOMERTON STREET, DEERAGUN	
Checked [Signature]		
Approved [Signature]		
COPYRIGHT ©		
Drawing Number PARK0001/25		Issue A