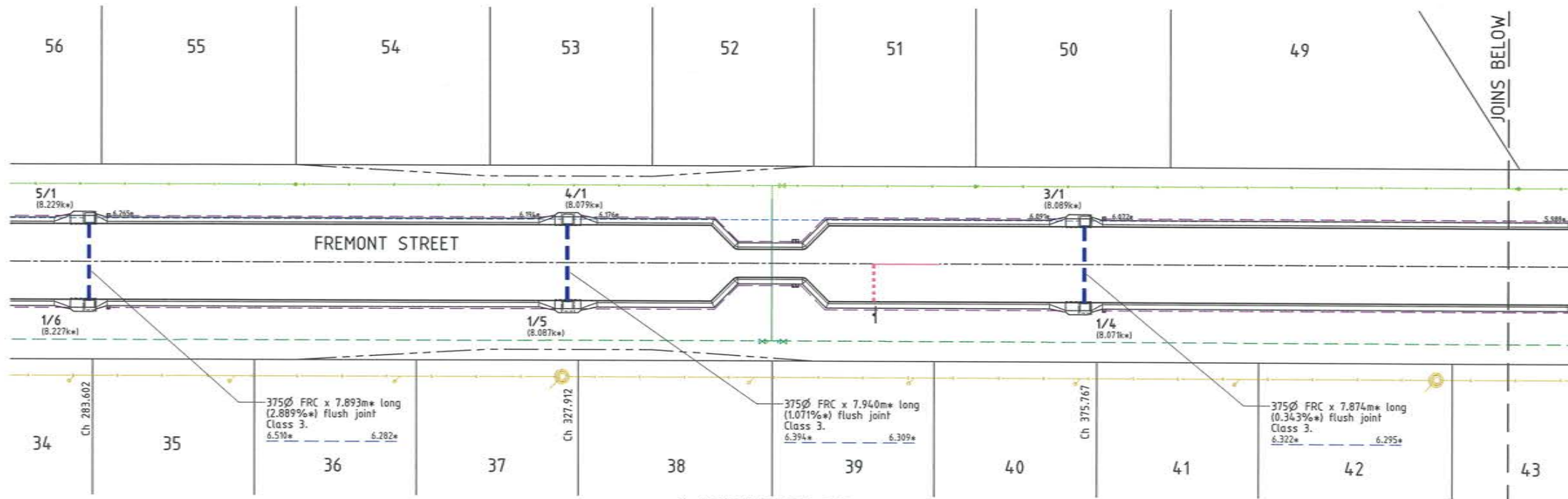


LEGEND

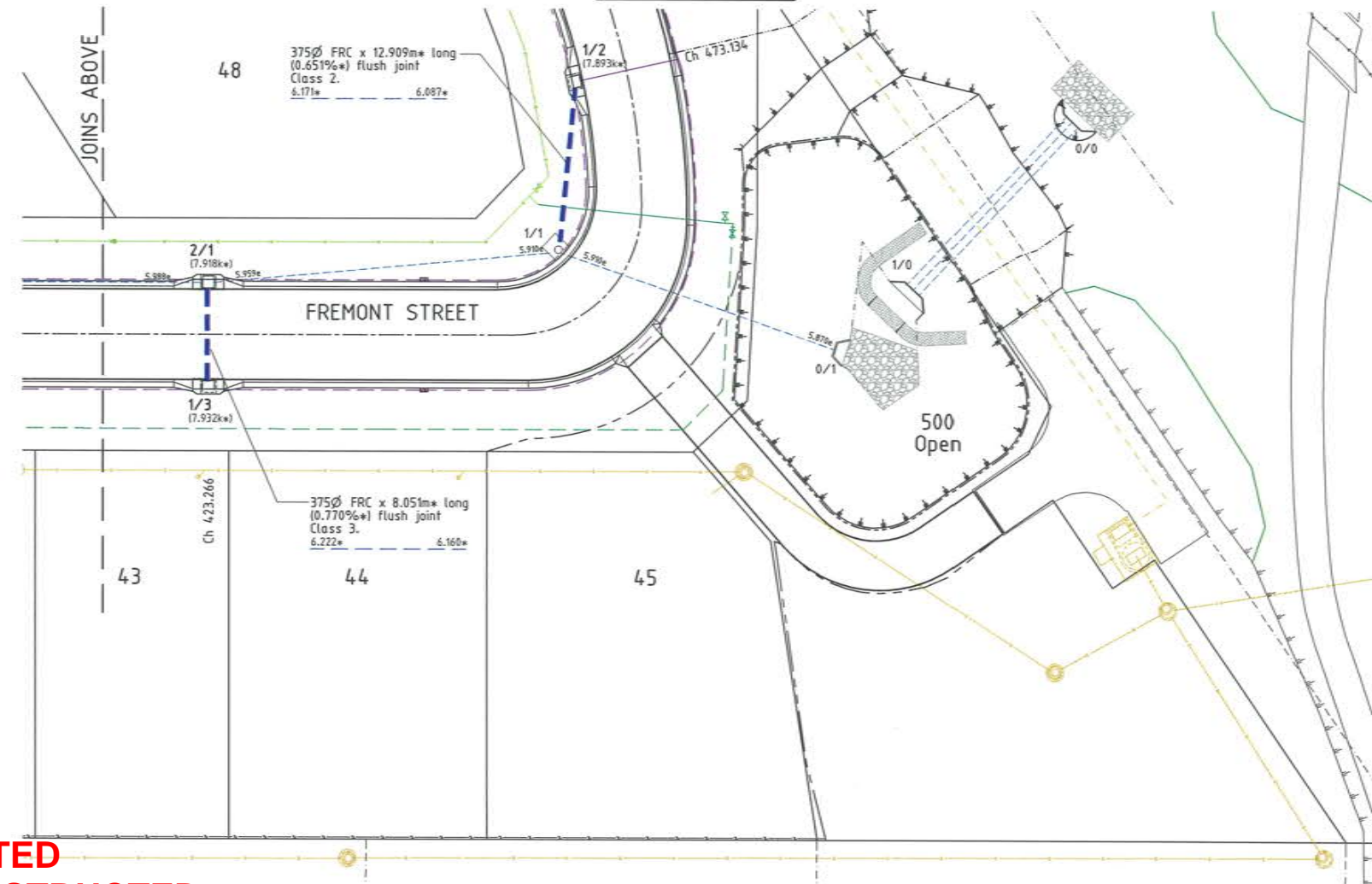
- 2/1 - Pit No. 2/Drainline No. 1
- RP boundary.
- Top of batter.
- Toe of batter.
- Change in grade.
- uPVC water main.
- Poly water main.
- Stormwater drain line.
- Subsoil drainage.
- Timber fence retaining wall.
- Stormwater drain line.
- Sewer main.
- Sewer manhole.
- Water main.

NOTES:

1. All Kerb Inlet Grates are Class 'D' and 'Bicycle Safe' to AS 3996 U.N.O.



LAYOUT PLAN



LAYOUT PLAN

STORMWATER STRUCTURE SETOUT TABLE

| PIT No. | EASTING | NORTHING | STRUCTURE TYPE | TOP LEVEL |
|---------|-------------|--------------|---------------------------|-----------|
| 1/6 | 464663.470* | 7874612.580* | Grated Kerb Inlet (2400R) | 8.227k* |
| 1/5 | 464707.750* | 7874608.590* | Grated Kerb Inlet (2400C) | 8.087k* |
| 1/4 | 464755.110* | 7874604.410* | Grated Kerb Inlet (2400R) | 8.071k* |
| 1/3 | 464802.460* | 7874600.210* | Grated Kerb Inlet (2400C) | 7.932k* |
| 1/2 | 464833.160* | 7874620.980* | Grated Kerb Inlet (2400C) | 7.893k* |

- All dimensions are to centre of chamber.
- All grated kerb inlets constructed over 900x900 Type 1 stormwater manhole to Council standard details U.N.O.

AS CONSTRUCTED

Rowlands Surveys Pty Ltd (ACN 010 025 260) hereby certify that the works detailed on this drawing, denoted *, have been constructed to the dimensions and levels shown.

Signature: Laurence John Nolan
 Director/Registered Surveyor
 Date: 17/12/13

**ACCEPTED
AS CONSTRUCTED**

REAL PROPERTY DESCRIPTION
 Lot 900 on SP243626
 Parish of BOHLE
 County of ELPHINSTONE
 Conway Street - Mount Low

LEVEL DATUM A.H.D. (Der)
 Horizontal Datum MGA 94 Zone 55
 Refer PM 177367 RL, 8.077
 Bull and washer to kerb
 GUNDBLUEY CRESENT.

Scale: 0 2.5 5 7.5 10m
 THE ORIGINAL OF THIS DOCUMENT IS COMPLETED TO THE SCALE NOTED.
 AS REPRODUCTION CAN DISTORT SIZE & SHAPE USE ONLY THE
 DIMENSIONS PROVIDED ON ARCHITECTURAL &/OR ENGINEERING DRAWINGS.
 VERIFY DIMENSIONS ON SITE BEFORE CONSTRUCTION.

All work has been carried out in accordance with LOCAL AUTHORITIES standard details.



Civil & Structural Engineers
 50 Punari Street, Currajong 4812
 Phone: [07] 4725 5550 Fax: [07] 4725 5850
 Email: mail@noeng.com.au
 Milton Messer & Associates Pty. Ltd.
 ACN 100 817 356

| Issue | Description | Date |
|-------|---|------------|
| C | AMENDED TO AS CONSTRUCTED. | 17/12/2013 |
| B | AMENDED FOR 'GENERALLY IN ACCORDANCE WITH' APPLICATION. | 4/07/2013 |
| A | ISSUED FOR CONSTRUCTION. | 12/04/2013 |
| P2 | PRELIMINARY - NOT FOR CONSTRUCTION - ISSUED FOR OPERATIONAL WORKS APPROVAL. | 28/02/2013 |
| P1 | PRELIMINARY - NOT FOR CONSTRUCTION - ISSUED FOR INFORMATION. | 12/2/2013 |

| | | |
|---|---|------------------------------------|
| Drawn LJ Date 12/2/2013 | In Association With BUSHLAND GROVE PTY LTD | STORMWATER DRAIN LINE PLAN |
| Checked [Signature] Approved [Signature] | BUSHLAND GROVE ESTATE STAGE 9, 25 ALLOTMENT RESIDENTIAL SUBDIVISION, MOUNT LOW | |
| COPYRIGHT © | | Drawing Number TUR0809/9 |
| | | Issue C |