

**LAYOUT PLAN**

- LEGEND**
- 2/1 - Pit No. 2/Drainline No. 1
  - - Stormwater flow arrow.
  - Q50 7.500u - Low drain ultimate Q50 level.
  - Q50 7.500i - Low drain interim Q50 level.
  - - - - - RP boundary.
  - - - - - Top of batter.
  - - - - - Toe of batter.
  - - - - - Sewer main.
  - - - - - Sewer manhole.
  - - - - - uPVC water main.
  - - - - - Poly water main.
  - - - - - Stormwater drain line.
  - - - - - Subsoil drainage.
  - - - - - Timber fence retaining wall.
  - - - - - Stormwater drain line.
  - - - - - Subsoil drainage.
  - - - - - Sewer main.
  - - - - - Sewer manhole.
  - - - - - Water main.
  - - - - - Poly water main.

**ROADWAY Q50 STORMWATER LEVELS**

Road Name	Chainage	Description	Q50 Level
FREMONT STREET	240.000	Roadway	8.280
	283.602	Pits 5/1 & 1/6	8.280
	327.912	Pits 4/1 & 1/5	8.270
	341.460	Roadway	8.270
	343.660	Roadway	8.260
	349.660	Roadway	8.210
	351.860	Roadway	8.160
	375.767	Pits 3/1 & 1/4	8.050
	423.266	Pits 2/1 & 1/3	8.040
	440.000	Roadway	8.030
	473.134	Pits 1/2	7.920
	530.000	Roadway	8.010

**AS CONSTRUCTED**  
 Northern Consulting Engineers hereby certify that the works detailed on this drawing have been constructed to the dimensions and levels detailed.  
*Andrew Ian Wallace* Date: 17/12/13  
 Andrew Ian Wallace

**REAL PROPERTY DESCRIPTION**  
 Lot 900 on SP243626  
 Parish of BOHLE  
 County of ELPHINSTONE  
 Conway Street - Mount Low

LEVEL DATUM A.H.D. (Der)  
 Horizontal Datum MGA' 94 Zone 55  
 Refer PH 177367 RL: 8.077  
 Bolt and washer in kerb  
 GUNDABLUEY CRESENT.

Scale  
 0 5 10 15 20m  
 THE ORIGINAL OF THIS DOCUMENT IS COMPLETED TO THE SCALE NOTED.  
 AS REPRODUCTION CAN DISTORT SIZE & SHAPE USE ONLY THE DIMENSIONS PROVIDED ON ARCHITECTURAL &/OR ENGINEERING DRAWINGS.  
 VERIFY DIMENSIONS ON SITE BEFORE CONSTRUCTION.

All work has been carried out in accordance with LOCAL AUTHORITIES standard details.

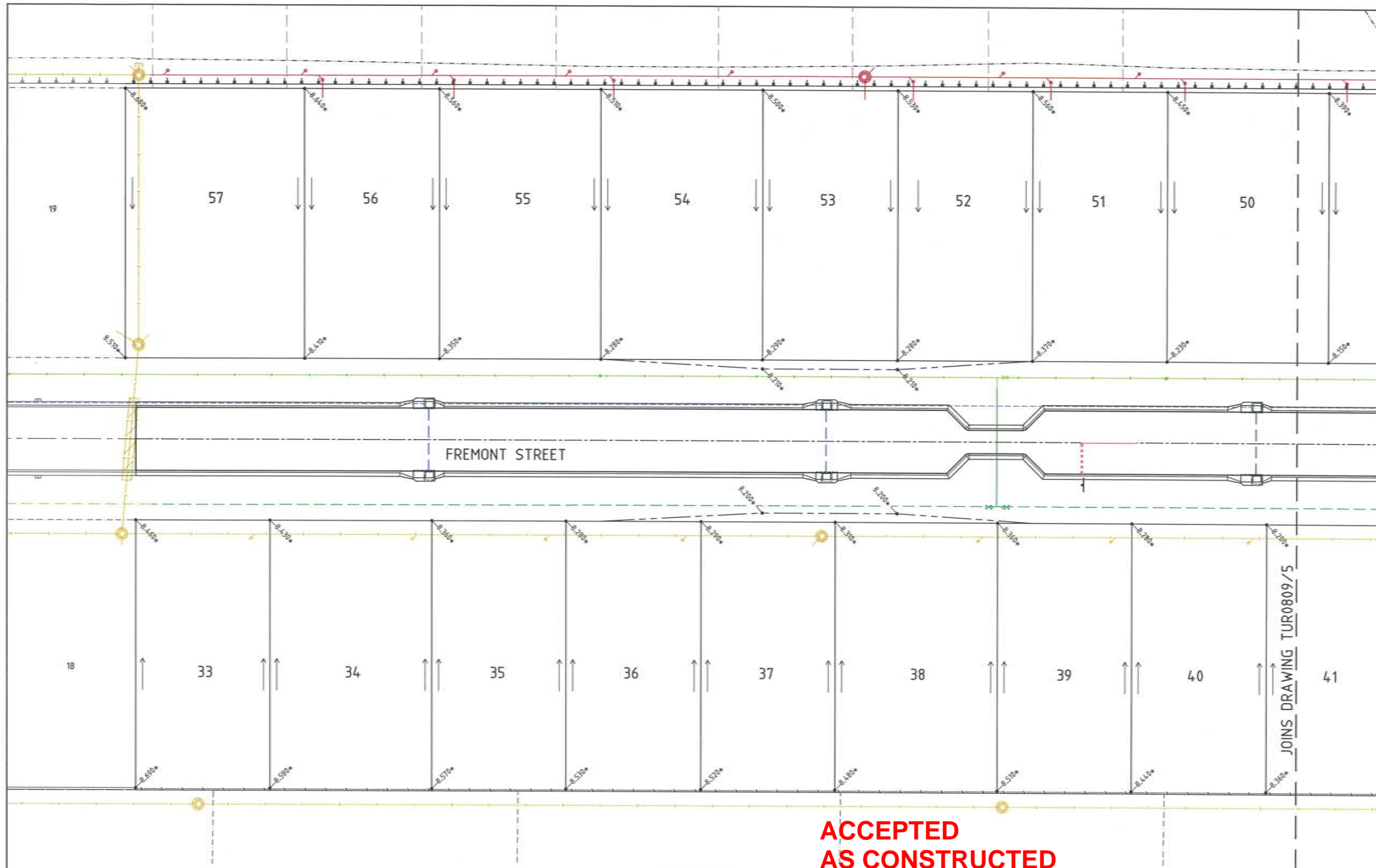
REFER TO DRAWING TUR0809/6 FOR ROAD TYPICAL SECTIONS.



Civil & Structural Engineers  
 50 Punari Street, Currajong 4812  
 Phone: [07] 4725 5550 Fax: [07] 4725 5850  
 Email: mail@nceng.com.au  
 Milton Messer & Associates Pty. Ltd.  
 ACN 100 817 356

Issue	Description	Date
D	AMENDED TO AS CONSTRUCTED.	17/12/2013
C	AMENDED FOR 'GENERALLY IN ACCORDANCE WITH' APPLICATION.	8/07/2013
B	AMENDED FOR 'GENERALLY IN ACCORDANCE WITH' APPLICATION.	4/07/2013
A	ISSUED FOR CONSTRUCTION.	12/04/2013
P1	PRELIMINARY - NOT FOR CONSTRUCTION - ISSUED FOR OPERATIONAL WORKS APPROVAL.	28/02/2013

Drawn KJM Date 28/02/2013	In Association With <b>BUSHLAND GROVE PTY LTD</b>	<b>LAYOUT PLAN, ROADWORKS &amp; STORMWATER</b>
Checked Approved	<b>BUSHLAND GROVE ESTATE STAGE 9, 25 ALLOTMENT RESIDENTIAL SUBDIVISION, MOUNT LOW</b>	
DRAWING NUMBER <b>TUR0809/3</b>		Issue <b>D</b>



- LEGEND**
- 12.000\* - As constructed surface levels.
  - - Stormwater flow arrow.
  - - - - - RP boundary.
  - - - - - Top of batter.
  - - - - - Toe of batter.
  - - - - - Sewer main.
  - - Sewer manhole.
  - - - - - uPVC water main.
  - - - - - Poly water main.
  - - - - - Stormwater drain line.
  - - - - - Timber fence retaining wall.
  - - - - - Stormwater drain line.
  - - - - - Sewer main.
  - - Sewer manhole.
  - - - - - Water main.
  - - - - - Poly water main.

**ACCEPTED  
AS CONSTRUCTED**

LAYOUT PLAN

**AS CONSTRUCTED**  
Rowlands Surveys Pty Ltd (ACN 010 025 260) hereby certify that the works detailed on this drawing, denoted \*, have been constructed to the dimensions and levels shown.

Laurence John Nolan Director/Registered Surveyor Date: 17/12/13

**REAL PROPERTY DESCRIPTION**  
Lot 900 on SP243626  
Parish of BOHLE  
County of ELPHINSTONE  
Conway Street - Mount Low

LEVEL DATUM A.H.D. (Der)  
Horizontal Datum MGA 94 Zone 55  
Refer PN 177367 RL 8.077  
Bolt and washer in kerb  
GUNDABLUVE CRESENT.

Scale  
0 2.5 5 7.5 10m  
THE ORIGINAL OF THIS DOCUMENT IS COMPLETED TO THE SCALE NOTED.  
AS REPRODUCTION CAN DISTORT SIZE & SHAPE USE ONLY THE DIMENSIONS PROVIDED ON ARCHITECTURAL &/OR ENGINEERING DRAWINGS.  
VERIFY DIMENSIONS ON SITE BEFORE CONSTRUCTION.

All work has been carried out in accordance with LOCAL AUTHORITIES standard details.

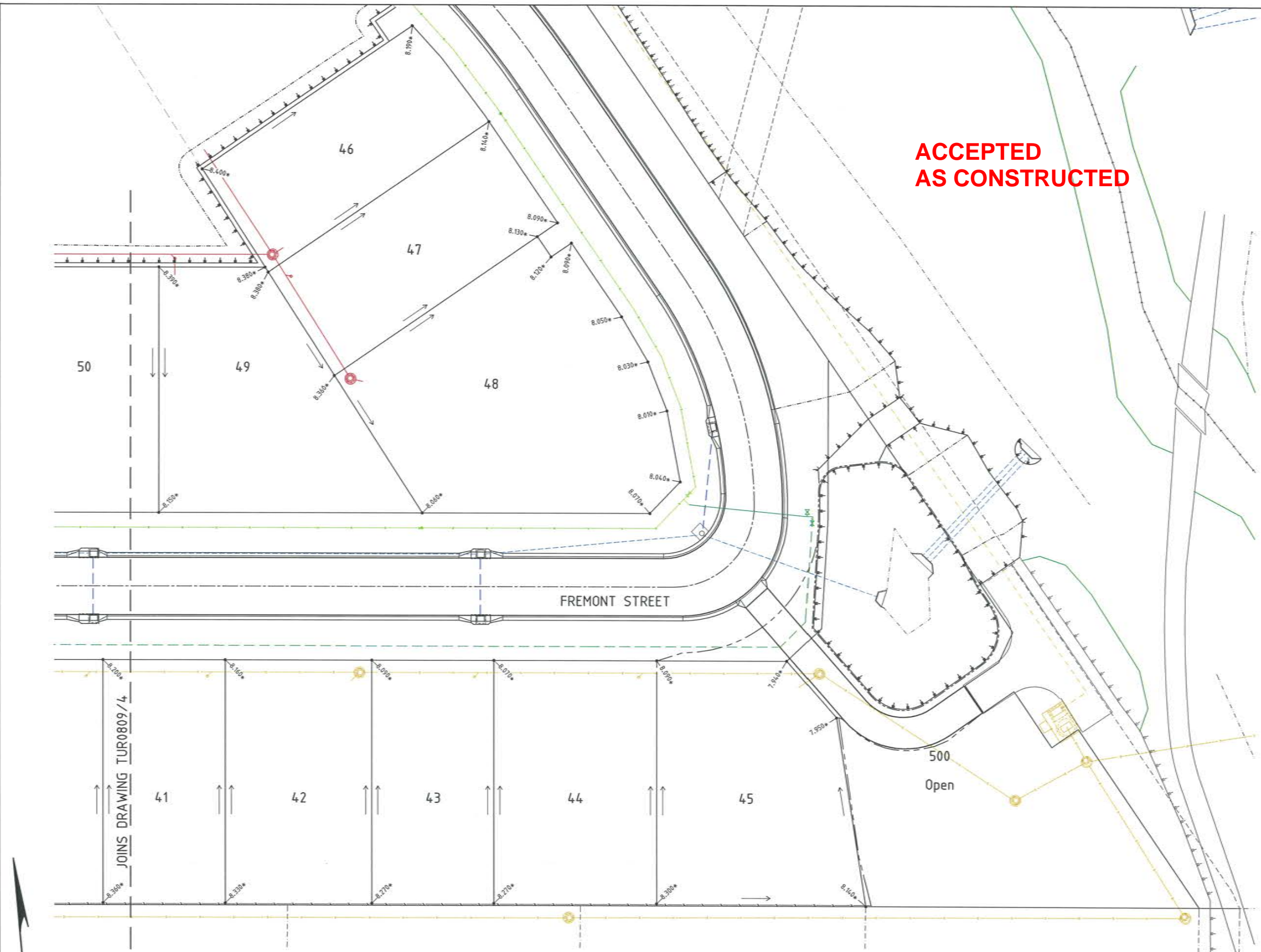


Civil & Structural Engineers  
50 Punari Street, Currajong 4812  
Phone: [07] 4725 5550 Fax: [07] 4725 5850  
Email: mail@nceng.com.au  
Milton Messer & Associates Pty. Ltd.  
ACN 100 817 356

C	AMENDED TO AS CONSTRUCTED.	17/12/2013
B	AMENDED FOR 'GENERALLY IN ACCORDANCE WITH' APPLICATION.	4/07/2013
A	ISSUED FOR CONSTRUCTION.	12/04/2013
P1	PRELIMINARY - NOT FOR CONSTRUCTION - ISSUED FOR OPERATIONAL WORKS APPROVAL.	28/02/2013
Issue	Description	Date
Drawn KJM Date 28/02/2013	In Association With <b>BUSHLAND GROVE PTY LTD</b>	<b>CUT/FILL LAYOUT PLAN</b>
Checked Approved	<b>BUSHLAND GROVE ESTATE STAGE 9, 25 ALLOTMENT RESIDENTIAL SUBDIVISION, MOUNT LOW</b>	
Drawing Number <b>TUR0809/4</b>		Issue <b>C</b>

- LEGEND**
- 12.000\* - As constructed surface levels.
  - - Stormwater flow arrow.
  - - - - - RP boundary.
  - - - - - Top of batter.
  - - - - - Toe of batter.
  - - - - - Change in grade.
  - - - - - Sewer main.
  - - Sewer manhole.
  - - - - - uPVC water main.
  - - - - - Poly water main.
  - - - - - Stormwater drain line.
  - - - - - Timber fence retaining wall.
  - - - - - Stormwater drain line.
  - - - - - Sewer main.
  - - Sewer manhole.
  - - - - - Sewer rising main.
  - - - - - Water main.

**ACCEPTED  
AS CONSTRUCTED**



**LAYOUT PLAN**

**AS CONSTRUCTED**  
Rowlands Surveys Pty Ltd (ACN 010 025 260) hereby certify that the works detailed on this drawing, denoted \*, have been constructed to the dimensions and levels shown.

Signature: Laurence John Nolan  
Director/Registered Surveyor  
Date: 17/12/13

**REAL PROPERTY DESCRIPTION**  
Lot 900 on SP243626  
Parish of BOHLE  
County of ELPHINSTONE  
Conway Street - Mount Low

LEVEL DATUM A.H.D. (Der)  
Horizontal Datum MGA' 94 Zone 55  
Refer PM 17367 RL: 8.077  
Bolt and washer in kerb  
GUNDABLUY CRESSENT.

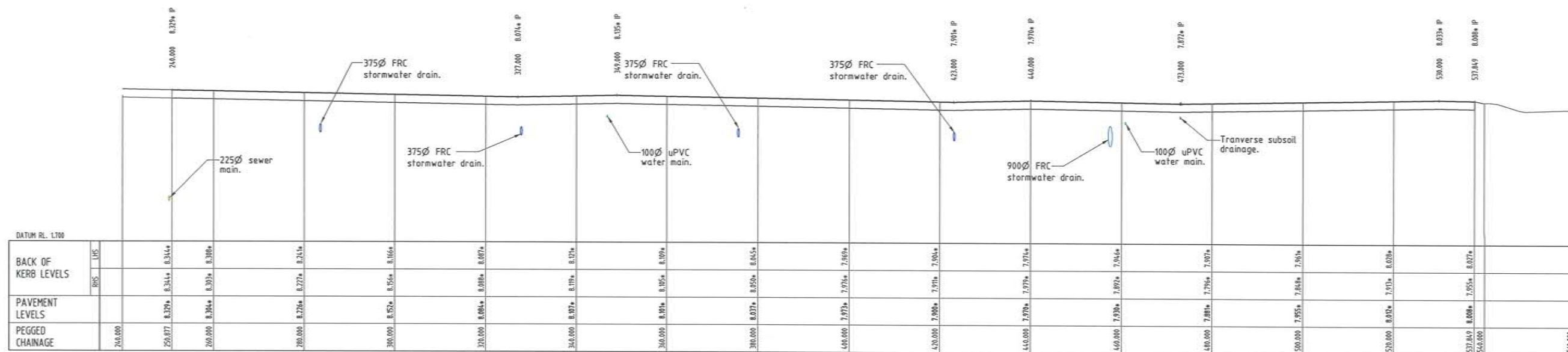
Scale: 1:250  
THE ORIGINAL OF THIS DOCUMENT IS COMPLETED TO THE SCALE NOTED. AS REPRODUCTION CAN DISTORT SIZE & SHAPE USE ONLY THE DIMENSIONS PROVIDED ON ARCHITECTURAL &/OR ENGINEERING DRAWINGS. VERIFY DIMENSIONS ON SITE BEFORE CONSTRUCTION.

All work has been carried out in accordance with LOCAL AUTHORITIES standard details.



Civil & Structural Engineers  
50 Punari Street, Currajong 4812  
Phone: [07] 4725 5550 Fax: [07] 4725 5850  
Email: mail@nceng.com.au  
Milton Messer & Associates Pty. Ltd.  
ACN 100 817 356

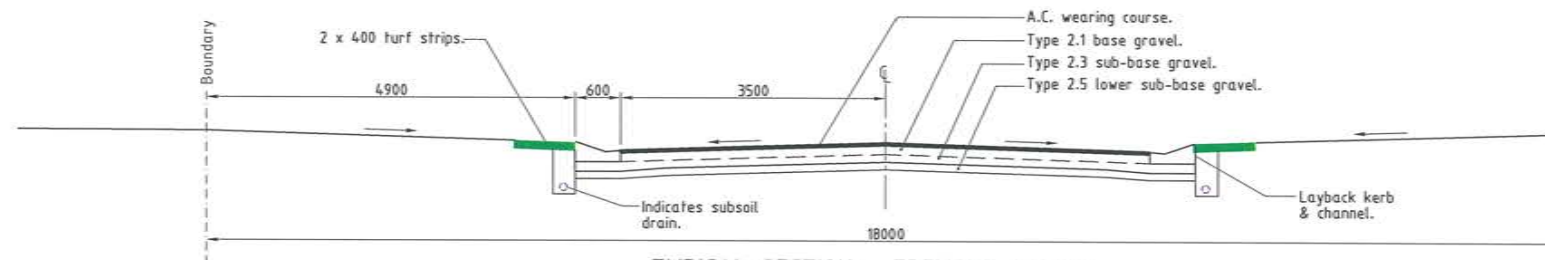
C	AMENDED TO AS CONSTRUCTED.	17/12/2013
B	AMENDED FOR 'GENERALLY IN ACCORDANCE WITH' APPLICATION.	4/07/2013
A	ISSUED FOR CONSTRUCTION.	12/04/2013
P1	PRELIMINARY - NOT FOR CONSTRUCTION - ISSUED FOR OPERATIONAL WORKS APPROVAL.	28/02/2013
Issue	Description	Date
Drawn KJM	In Association With <b>BUSHLAND GROVE PTY LTD</b>	
Date 28/02/2013	<b>BUSHLAND GROVE ESTATE STAGE 9, 25 ALLOTMENT RESIDENTIAL SUBDIVISION, MOUNT LOW</b>	
Checked [Signature]		
Approved [Signature]		
COPYRIGHT ©		
CUT/FILL LAYOUT PLAN		
Drawing Number <b>TUR0809/5</b>	Issue <b>C</b>	



FREMONT STREET  
(Regulatory Speed Zone 50 km/h)

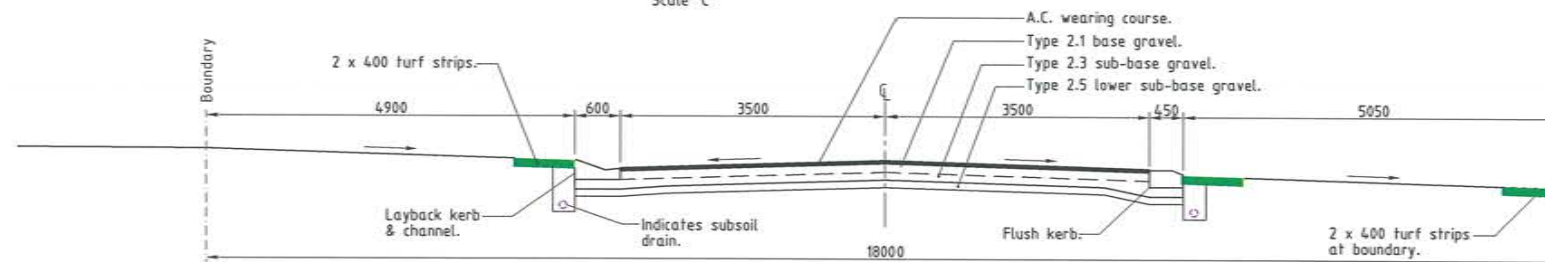
LONGITUDINAL SECTIONS

Scale 'A' - Horizontal  
Scale 'B' - Vertical



TYPICAL SECTION - FREMONT STREET

Ch 250.877 - Ch 466.400  
Scale 'C'



TYPICAL SECTION - FREMONT STREET

Ch 473.628 - Ch 537.849  
Scale 'C'

ACCEPTED  
AS CONSTRUCTED

AS CONSTRUCTED

Rowlands Surveys Pty Ltd (ACN 010 025 260) hereby certify that the works detailed on this drawing, denoted \*, have been constructed to the dimensions and levels shown.

Laurence John Nelson  
Director/Registered Surveyor

Date: 17/12/13

AS CONSTRUCTED

Northern Consulting Engineers hereby certify that the works detailed on this drawing have been constructed to the dimensions and levels detailed.

Andrew Ian Wallace  
Date: 17/12/13

PAVEMENT TABLE

PAVEMENT TYPE	PAVEMENT DESCRIPTION
Type 1	30mm DG10 Asphalt. 125mm base course, DTMR Type 2.1 (CBR80). 100mm sub-base course, DTMR Type 2.3 (CBR45). 100mm lower sub-base course, DTMR Type 2.5 (CBR15).

All work has been carried out in accordance with LOCAL AUTHORITIES standard details.



Civil & Structural Engineers  
50 Punari Street, Currajong 4812  
Phone: [07] 4725 5550 Fax: [07] 4725 5850  
Email: mail@nceng.com.au  
Milton Messer & Associates Pty. Ltd.  
ACN 100 817 356

Scale 'A' 0 5 10 15 20m  
Scale 'B' 0 1 2 3 4m  
Scale 'C' 0 0.5 1 1.5 2m  
THE ORIGINAL OF THIS DOCUMENT IS COMPLETED TO THE SCALE NOTED. AS REPRODUCTION CAN DISTORT SIZE & SHAPE USE ONLY THE DIMENSIONS PROVIDED ON ARCHITECTURAL &/OR ENGINEERING DRAWINGS. VERIFY DIMENSIONS ON SITE BEFORE CONSTRUCTION.

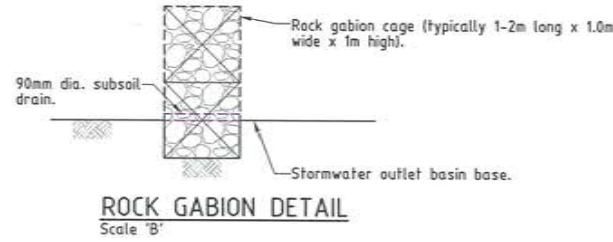
LEVEL DATUM A.H.D. (Der)  
Horizontal Datum MGA' 94 Zone 55  
Refer PM 177367 RL: 8.077  
Bolt and washer in kerb  
GUNDABLUVEY CRESMENT.

REAL PROPERTY DESCRIPTION  
Lot 900 on SP243626  
Parish of BOHLE  
County of ELPHINSTONE  
Conway Street - Mount Low

Issue	Description	Date
B A P1	AMENDED TO AS CONSTRUCTED. ISSUED FOR CONSTRUCTION PRELIMINARY - NOT FOR CONSTRUCTION - ISSUED FOR OPERATIONAL WORKS APPROVAL.	17/12/2013 12/04/2013 28/02/2013
Drawn KJM Date 28/02/2013	In Association With <b>BUSHLAND GROVE PTY LTD</b>	ROAD LONGITUDINAL & TYPICAL CROSS SECTIONS
Checked Approved	<b>BUSHLAND GROVE ESTATE STAGE 9, 25 ALLOTMENT RESIDENTIAL SUBDIVISION, MOUNT LOW</b>	
COPYRIGHT ©		Drawing Number <b>TUR0809/6</b>
		Issue <b>B</b>



**ACCEPTED  
AS CONSTRUCTED**



No.	CORNER EDGE A	CORNER EDGE B
CHGE.	BACK OF KERB LEVEL	BACK OF KERB LEVEL
00	7.968*	7.951*
03	7.962*	7.944*
06	7.956*	7.930*
09	7.943*	IL 7.788*
11.367	7.920*	
12		7.911*
15		7.900*
18		7.894*
19.975		7.889*

- LEGEND**
- As constructed surface level.
  - Stormwater flow arrow.
  - RP boundary.
  - Top of batter.
  - Toe of batter.
  - Change in grade.
  - uPVC water main.
  - Poly water main.
  - Stormwater drain line.
  - Subsoil drainage.
  - Stormwater drain line.
  - Sewer main.
  - Sewer manhole.
  - Water main.

**SETOUT TABLE**

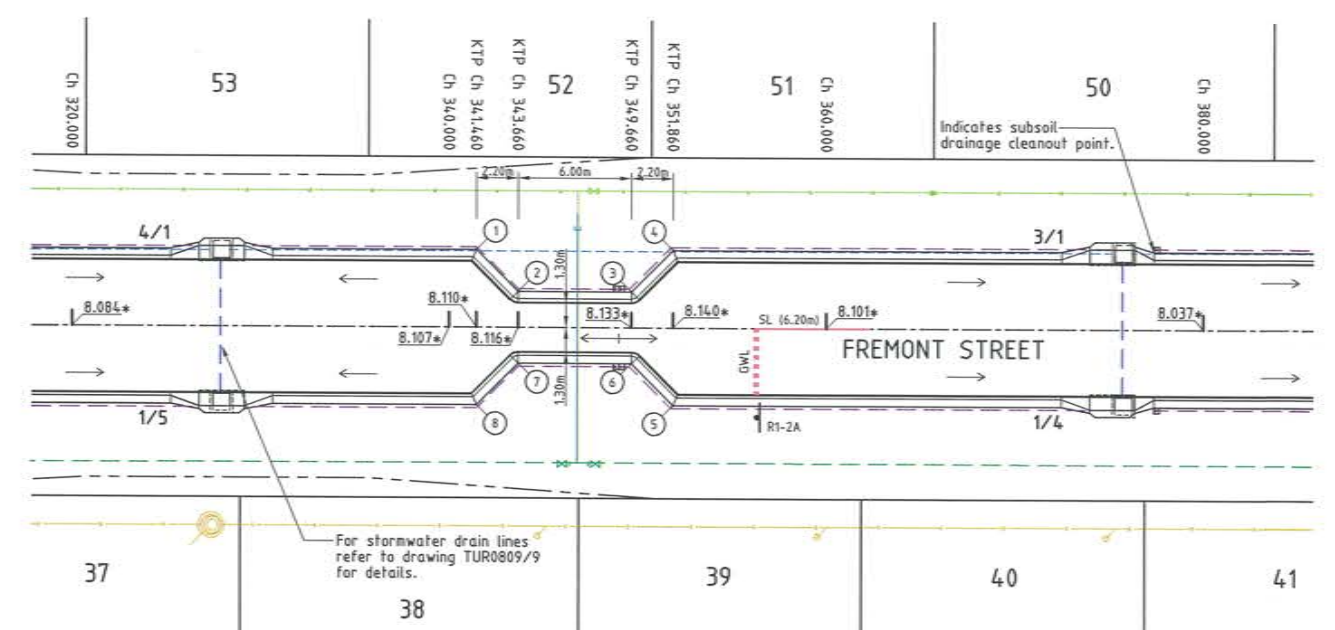
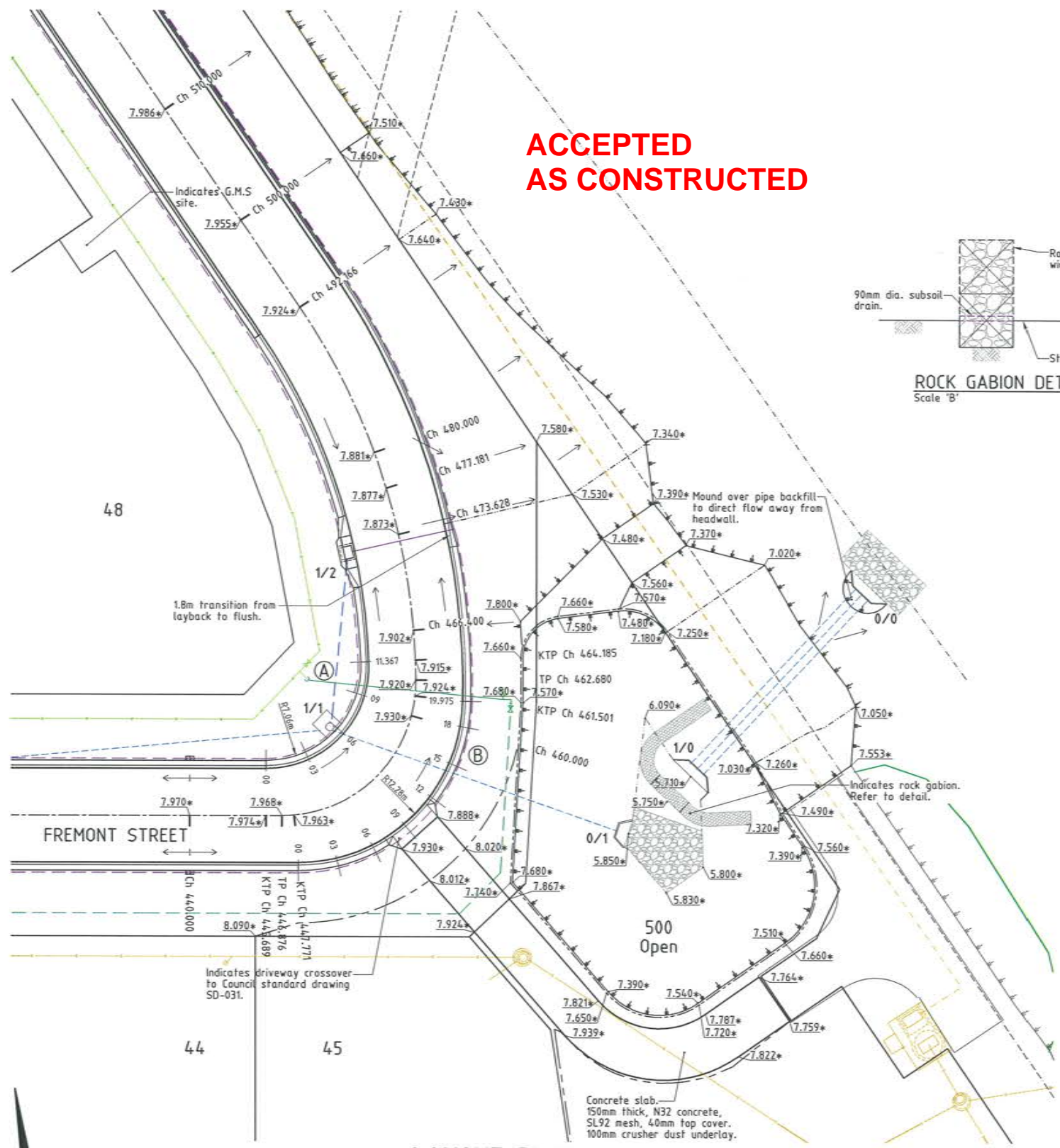
Point N°	Chainage	Offset Distance (Back of Kerb)	RL (back of K&C)
1	341.460	4.100m (L)	8.132m
2	343.660	1.900m (L)	8.181m
3	349.660	1.900m (L)	8.211m
4	351.860	4.100m (L)	8.149m
5	351.860	4.100m (R)	8.155m
6	349.660	1.900m (R)	8.208m
7	343.660	1.900m (R)	8.177m
8	341.460	4.100m (R)	8.139m

- PAVEMENT MARKING--**
- SL 100 Separation Line.
  - GWL 600mm Paint, 600mm Gap 300 Giveway Line.

**SIGNAGE--**

CODE	EXAMPLE	DESCRIPTION
R1-2A		Giveway

All linemarking & signage is installed in accordance with the M.U.T.C.D.



**LAYOUT PLAN**  
Scale 'A'

**SLOW POINT**  
Scale 'A'

**AS CONSTRUCTED**

Rowlands Surveys Pty Ltd (ACN 010 025 260) hereby certify that the works detailed on this drawing, denoted \*, have been constructed to the dimensions and levels shown.

**AS CONSTRUCTED**

Northern Consulting Engineers hereby certify that the works detailed on this drawing have been constructed to the dimensions and levels detailed.

**REAL PROPERTY DESCRIPTION**  
Lot 900 on SP243626  
Parish of BOHLE  
County of ELPHINSTONE  
Conway Street - Mount Low

Date: 17/12/13  
Laurence John Nolan  
Director/Registered Surveyor

Date: 17/12/13  
Andrew Ian Wallace

All work has been carried out in accordance with LOCAL AUTHORITIES standard details.



Civil & Structural Engineers  
50 Punari Street, Currajong 4812  
Phone: [07] 4725 5550 Fax: [07] 4725 5850  
Email: mail@nceng.com.au  
Milton Messer & Associates Pty. Ltd.  
ACN 100 817 356

Issue	Description	Date
C	AMENDED TO AS CONSTRUCTED.	17/12/2013
B	AMENDED FOR 'GENERALLY IN ACCORDANCE WITH' APPLICATION.	4/07/2013
A	ISSUED FOR CONSTRUCTION.	12/04/2013
P1	PRELIMINARY - NOT FOR CONSTRUCTION - ISSUED FOR OPERATIONAL WORKS APPROVAL.	28/02/2013

Drawn KJM Date 28/02/2013	In Association With <b>BUSHLAND GROVE PTY LTD</b>	<b>SLOW POINT, CORNER WIDENING &amp; ACCESS DRIVEWAY LAYOUT PLAN</b>
Checked MJM Approved MJM	<b>BUSHLAND GROVE ESTATE STAGE 9, 25 ALLOTMENT RESIDENTIAL SUBDIVISION, MOUNT LOW</b>	
COPYRIGHT ©		Drawing Number <b>TUR0809/8</b>
		Issue <b>C</b>