

LAYOUT PLAN

LEGEND

- 2/1 (12.800m) - Pit No. 2/Drainline No. 1
- 12.800m - As constructed top of structure levels.
- As constructed pipe invert levels.
- RP boundary.
- Top of batter.
- Toe of batter.
- Change of grade.
- Invert of drain.
- Stormwater drain line.
- Subsoil drainage.
- Sewer main.
- Sewer manhole.
- uPVC water main.
- Poly water main.
- Subsoil drainage.
- Sewer main.
- Sewer manhole.
- Water main.

NOTES:

1. All Kerb Inlet Grates are Class 'D' and 'Bicycle Safe' to AS 3996 U.N.O.

STORMWATER STRUCTURE SETOUT TABLE

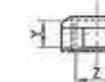
PIT No.	EASTING	NORTHING	STRUCTURE TYPE	TOP LEVEL
0/60	145205.76*	7874869.36*	Outlet Structure	6.83m
1/60	145101.93*	7874892.45*	Grated Kerb Inlet (2400L), Type 1	7.10m
2/60	145101.74*	7874864.00*	Grated Kerb Inlet (2400L), Type 1	7.15m
3/60	145142.31*	7874883.00*	Grated Kerb Inlet (3600L), Type 1	7.405m
4/60	145152.24*	7874819.29*	900x300 Stormwater Manhole, Type 1	7.425m
5/60	145155.25*	7874869.52*	Grated Kerb Inlet (3600L), Non Standard	7.410m
6/60	145166.73*	7874876.31*	Grated Kerb Inlet (3600L), Non Standard	7.272*
1/61	145143.19*	7874891.50*	Grated Kerb Inlet (3600C), Type 1	7.405m
1/70	145016.23*	7874894.43*	Grated Kerb Inlet (3600C), Type 1	7.788m
2/70	145016.04*	7874885.97*	Grated Kerb Inlet (3600C), Type 1	7.750m

- All dimensions are to centre of chamber.
- Setout of stormwater structure 0/60 to end of pipe length.
- Refer to drawing TUR0806/13 for outlet structure 0/60 details.
- Pits 5/60 & 6/60 are non standard chambers, refer to table.

NON STANDARD CHAMBER TABLE

PIT No.	Y distance (mm)	Z distance (mm)
5/60	900	1400
6/60	900	1400

- Refer to drawing TUR0806/12 for pit 6/60 details.



\*'-AS CONSTRUCTED

I, John Francis Weber, Licensed Surveyor, hereby certify that the works detailed on this drawing have been constructed to the dimensions and levels detailed.

*John Francis Weber* Date: 11/1/13

\* - Indicates as constructed information.

All work has been carried out in accordance with LOCAL AUTHORITIES standard details.



Civil & Structural Engineers  
50 Punari Street, Currajong 4812  
Phone: (07) 4725 5550 Fax: (07) 4725 5850  
Email: mail@nceng.com.au  
MNon Mossor & Associates Pty. Ltd.  
ACN 100 817 396

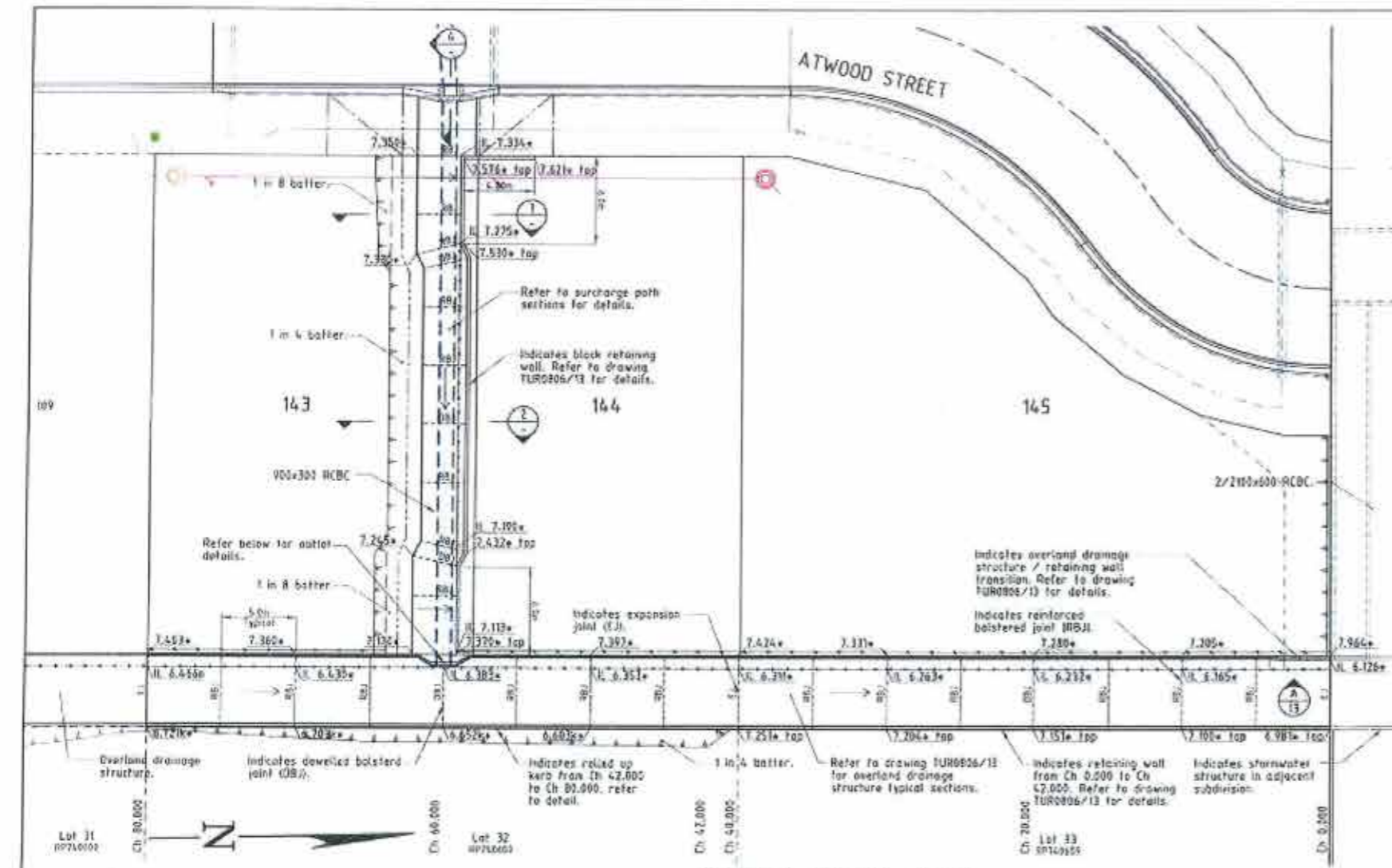
Issue	Description	Date
C	AMENDED TO AS CONSTRUCTED. - TEMPORARY TURNAROUND REMOVED.	18/01/2013
B	AMENDED TO AS CONSTRUCTED.	29/12/2012
A	PRELIMINARY - NOT FOR CONSTRUCTION - ISSUED FOR CONSTRUCTION.	29/09/2012
P2	PRELIMINARY - NOT FOR CONSTRUCTION - ISSUED FOR COUNCIL RFI.	15/03/2012
P1	PRELIMINARY - NOT FOR CONSTRUCTION - ISSUED FOR OPERATIONAL WORKS APPROVAL.	15/12/2011

Drawn KR Date 19/12/2011	In Association With <b>BUSHLAND GROVE PTY LTD</b>	<b>STORMWATER DRAIN LINE PLAN</b>
Checked <i>[Signature]</i> Approved <i>[Signature]</i>	<b>BUSHLAND GROVE ESTATE STAGE 6, 22 ALLOTMENT RESIDENTIAL SUBDIVISION, ATWOOD STREET, MOUNT LOW</b>	
Drawing Number <b>TUR0806/11</b>		Issue <b>C</b>

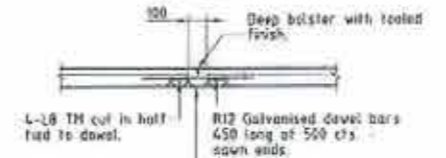
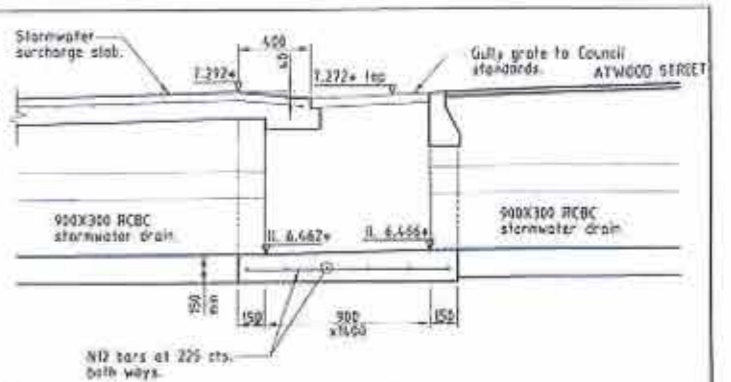
REAL PROPERTY DESCRIPTION  
Lot 908 on SP241177  
Parish of BOHLE  
County of ELPHINSTONE  
Summergold Street - Mount Low

LEVEL DATUM A.M.D.  
Horizontal Datum GDA' 94 Zone 55  
Refer P.N. 58332 DL 7.875  
Spike in concrete.  
Cap ATWOOD ST. & ELLENDALE ST.

Scale  
0 2.5 5 7.5 10m  
THE ORIGINAL OF THIS DOCUMENT IS COMPLETED TO THE SCALE NOTED.  
AS REPRODUCTION CAN DISTORT SIZE & SHAPE USE ONLY THE  
DIMENSIONS PROVIDED ON ARCHITECTURAL &/OR ENGINEERING DRAWINGS.  
VERIFY DIMENSIONS ON SITE BEFORE CONSTRUCTION.

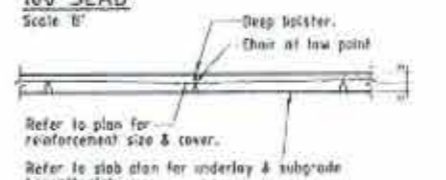


- LEGEND**
- 12.050+ - As constructed surface level.
  - 11.12.000+ - As constructed invert level.
  - 12.050+ top - As constructed top of wall level.
  - - RP boundary.
  - - - - Screen fence.
  - - - - Top of batter.
  - - - - Toe of batter.
  - - - - Change of grade.
  - - - - Invert of drain.
  - - - - Stormwater drain line.
  - - - - Subsoil drainage.
  - - - - Sewer main.
  - - - - Sewer manhole.
  - - - - uPVC water main.
  - - - - Poly water main.
  - - - - Stormwater drain line.
  - - - - Subsoil drainage.
  - - - - Sewer main.
  - - - - Sewer manhole.
  - - - - Water main.



Refer to slab plan for underlay & subgrade beneath slab.

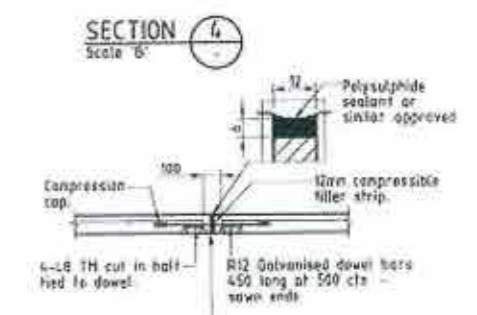
**DOWELLED BOLSTERED JOINT (DBJ) 100 SLAB**  
Scale 'B'



Refer to plan for reinforcement size & cover.

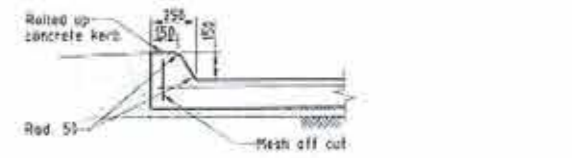
Refer to slab plan for underlay & subgrade beneath slab.

**REINFORCED BOLSTERED JOINT (RBJ) 100 SLAB**  
Scale 'B'

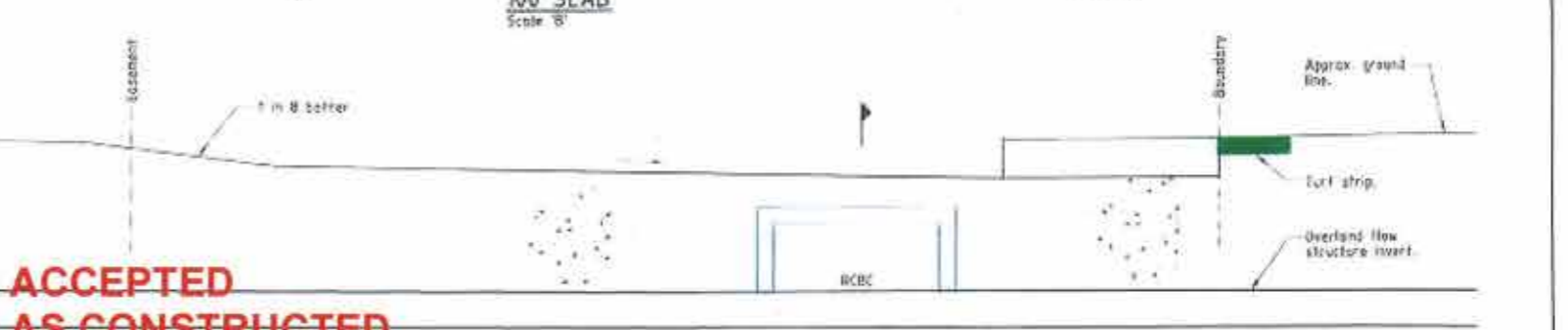
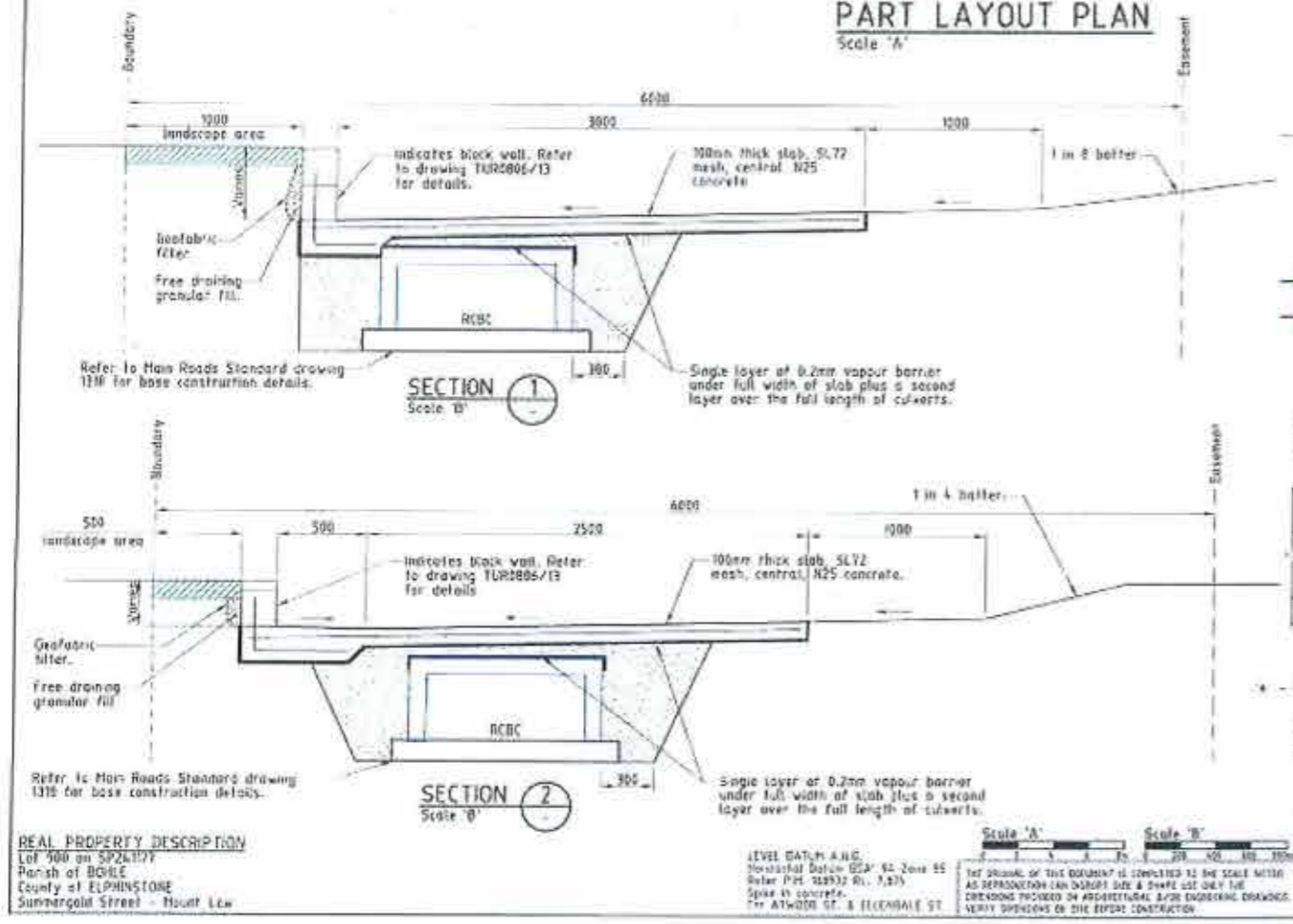


Refer to slab plan for underlay & subgrade beneath slab.

**EXPANSION JOINT (EJ) - 100 SLAB**  
Scale 'B'



**ROLLED UP KERB**  
Scale 'B'



**ACCEPTED AS CONSTRUCTED**

**OUTLET DETAIL**  
Scale 'B'

**\*-AS CONSTRUCTED**  
I, John Francis Weber, Licensed Surveyor, hereby certify that the works detailed on this drawing have been constructed to the dimensions and levels detailed.

**AS CONSTRUCTED**  
Northern Consulting Engineers hereby certify that the works detailed on this drawing have been constructed to the dimensions and levels detailed.

John Francis Weber  
Date: 20/12/12  
Andrew Ian Wallace  
Date: 20/12/12

**REAL PROPERTY DESCRIPTION**  
Lot 500 on SP241177  
Parish of BOWLE  
County of ELPHINSTONE  
Summergold Street - Mount Low

**LEVEL DATUM A.M.S.L.**  
New Zealand Datum (NZD) 42 Zone 55  
Refer P.M. 128932 (N. 1, 2)  
Spoke in concrete.  
The ATWOOD ST. & ELPHINSTONE ST.  
LEVEL DATUM IS A.M.S.L.

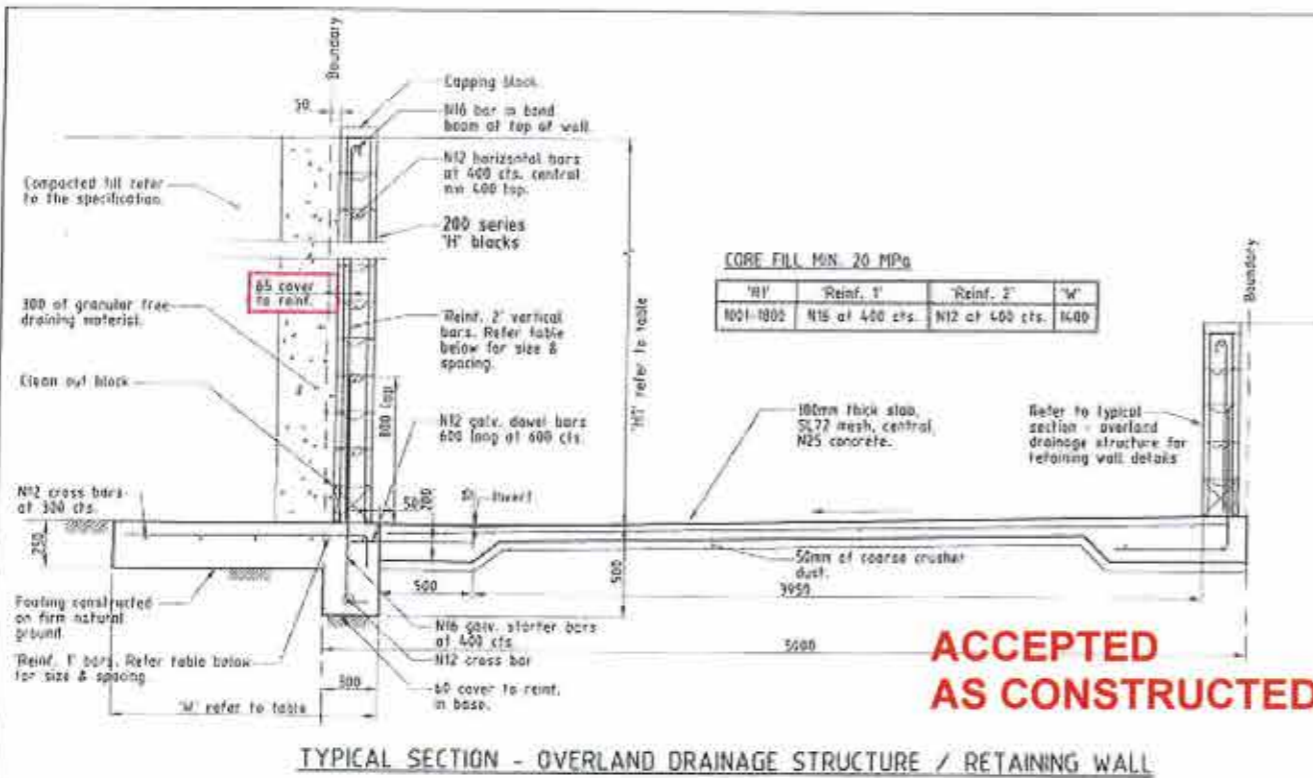
All work has been carried out in accordance with LOCAL AUTHORITIES standard details

**NORTHERN CONSULTING engineers**

Civil & Structural Engineers  
50 Puarua Street, Currajong 4812  
Phone: (07) 4725 5550 Fax: (07) 4725 5850  
Email: nce@northernconsulting.com.au  
When Messer & Associates Pty Ltd  
ACN 100 811 258

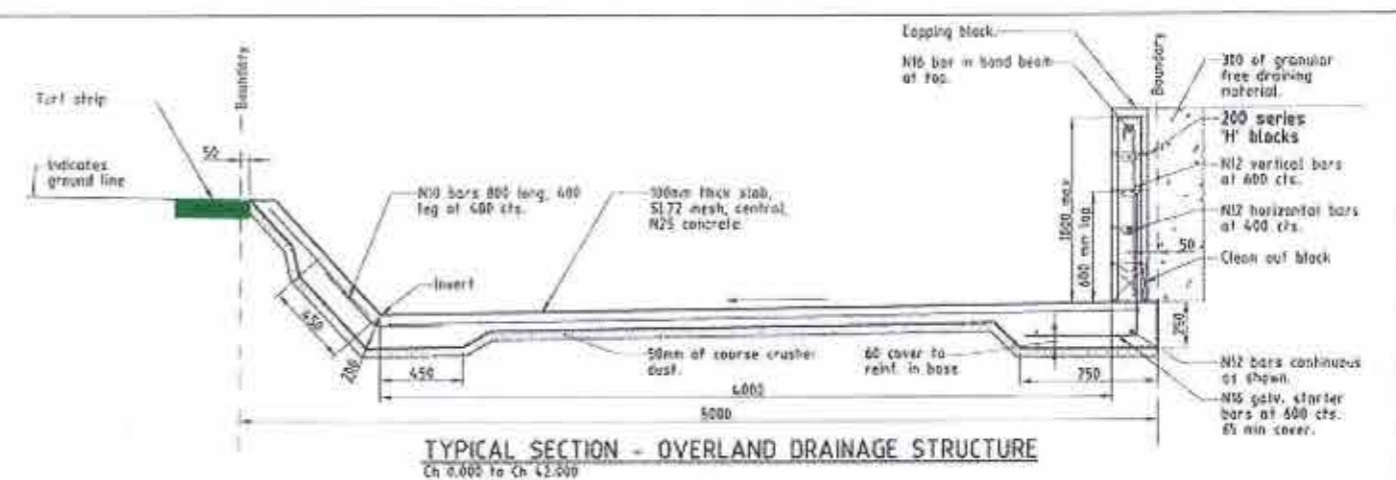
Issue	Description	Date
1	APPROVED FOR AS CONSTRUCTED	20/12/2012
2	PRELIMINARY - NOT FOR CONSTRUCTION - ISSUED FOR CONSTRUCTION	24/08/2010
3	PRELIMINARY - NOT FOR CONSTRUCTION - ISSUED FOR OPERATIONAL WORKS APPROVAL	19/10/2010

Drawn	In Association With	<b>SURCHARGE PATH &amp; OVERLAND DRAINAGE STRUCTURE LAYOUT &amp; DETAILS</b>
19/12/2011	<b>BUSHLAND GROVE PTY LTD</b>	
Checked	<b>BUSHLAND GROVE ESTATE STAGE 6, 22 ALLOTMENT RESIDENTIAL SUBDIVISION, ATWOOD STREET, MOUNT LOW</b>	Drawing Number
Approved		<b>TUR0806/12</b>
COPYRIGHT ©		Issue
		<b>B</b>

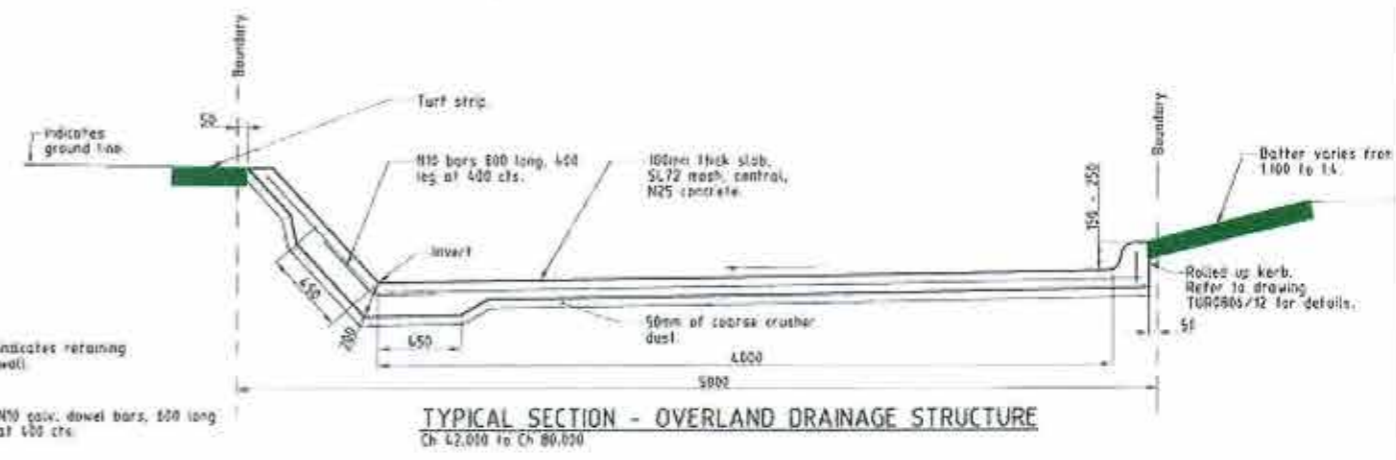


TYPICAL SECTION - OVERLAND DRAINAGE STRUCTURE / RETAINING WALL

**ACCEPTED AS CONSTRUCTED**



TYPICAL SECTION - OVERLAND DRAINAGE STRUCTURE  
Ch 0.000 to Ch 42.000



TYPICAL SECTION - OVERLAND DRAINAGE STRUCTURE  
Ch 42.000 to Ch 80.000

\*-AS CONSTRUCTED

I, John Francis Weber, Licensed Surveyor, hereby certify that the works detailed on this drawing have been constructed to the dimensions and levels detailed.

*J. Weber*  
John Francis Weber

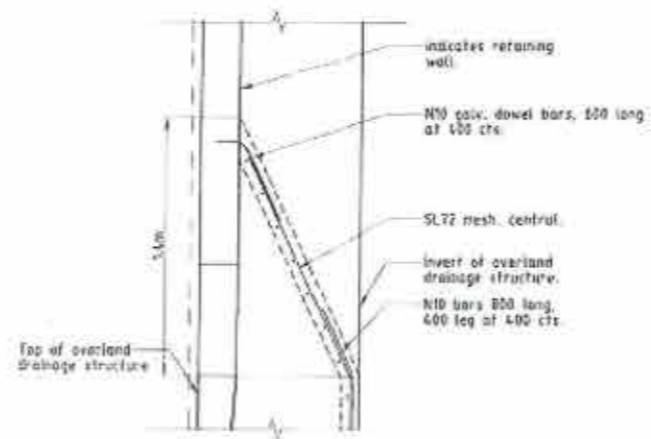
Date 20/12/12

AS CONSTRUCTED

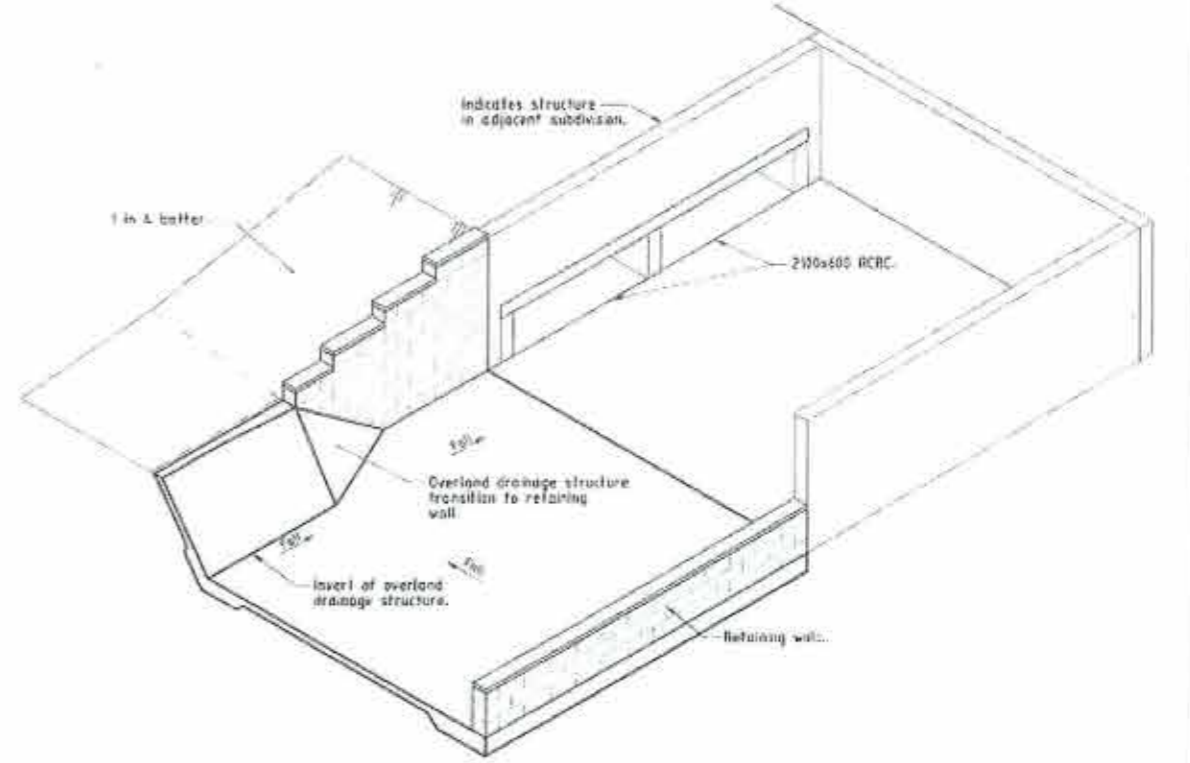
Northern Consulting Engineers hereby certify that the works detailed on this drawing have been constructed to the dimensions and levels detailed.

*A. Walker*  
Andrew Walker

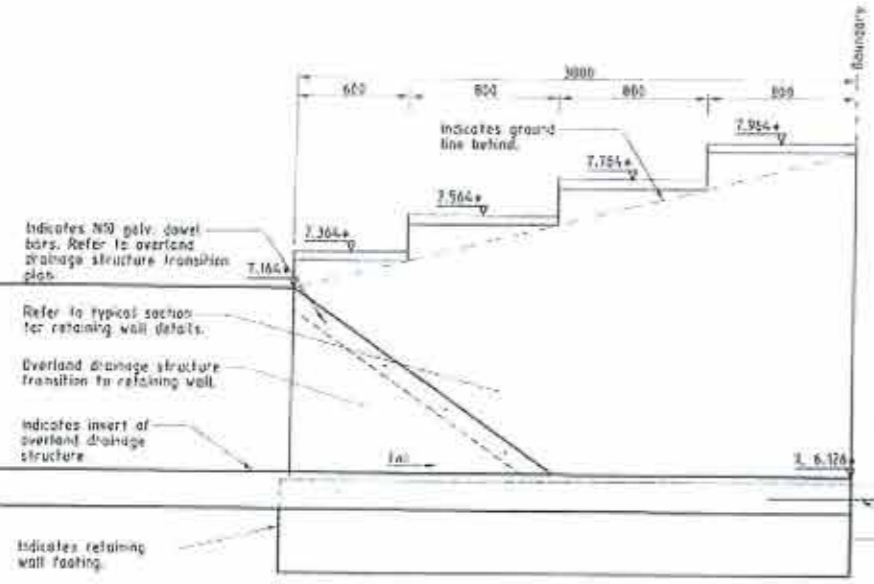
Date 20/12/12



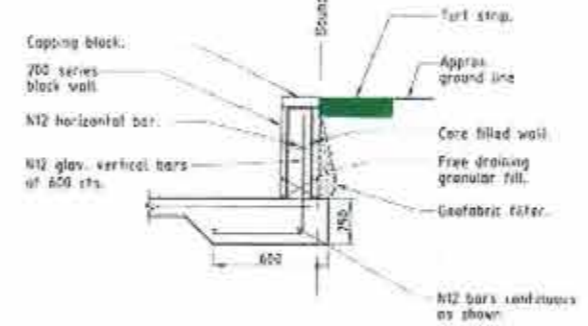
OVERLAND DRAINAGE STRUCTURE TRANSITION PLAN



OVERLAND DRAINAGE STRUCTURE / RETAINING WALL ISOMETRIC VIEW  
N.T.S.



ELEVATION A



BLOCK RETAINING WALL  
SURRENDERE PATH (500 HIGH MAX)

\* - indicates as constructed information

All work has been carried out in accordance with LOCAL AUTHORITIES standard details.



Civil & Structural Engineers  
50 Funari Street, Currajong 4812  
Phone (07) 4725 5550 Fax (07) 4725 5850  
Email mail@nceng.com.au  
Mark Mosser & Associates Pty Ltd  
ACN 108 817 258

Issue	Description	Date
0	APPROVED TO AS CONSTRUCTED	20/12/2012
A	PRELIMINARY - NOT FOR CONSTRUCTION	20/08/2010
B	PRELIMINARY - NOT FOR CONSTRUCTION	13/11/2010
C	PRELIMINARY - NOT FOR CONSTRUCTION	19/12/2011

Drawn	In Association With	CONSTRUCTION DETAILS
KR	BUSHLAND GROVE PTY LTD	
Date		
19/12/2011		
Checked	BUSHLAND GROVE ESTATE STAGE 6, 22 ALLOTMENT RESIDENTIAL SUBDIVISION, ATWOOD STREET, MOUNT LOW	Drawing Number
Approved		TUR0806/13
COPYRIGHT ©		Scale
		B

REAL PROPERTY DESCRIPTION  
Lot 900 on SP241177  
Parish of BOHLE  
County of ELPHINSTONE  
Surrendered Street - Mount Low

LEVEL DATUM A.M.S.L.  
Referenced Datum GDA 94 Zone 55  
Datum P.M. 1000000 N  
Scale of certificate  
1:100000 ST. & ELLERENDALE ST.

Scale  
0 100 200 300 400  
THE DRAWING OF THIS DOCUMENT IS SUBMITTED TO THE SCALE NOTED AS APPROVED BY THE DISTRICT ENGINEER. THE DISTRICT ENGINEER'S OFFICE DOES NOT GUARANTEE THE ACCURACY OF THE INFORMATION OR THE DIMENSIONS SHOWN THEREIN.