

**ACCEPTED
AS CONSTRUCTED**



LEGEND

GENERAL

- RP boundary.
- Top of batter.
- Top of batter.
- Change of grade.
- Invert of drain.
- Stormwater drain line.
- Subsoil drainage.
- Sewer main.
- Sewer manhole.
- uPVC water main.
- Poly water main.
- Stormwater drain line.
- Subsoil drainage.
- Sewer main.
- Sewer manhole.
- Water main.

SEWERAGE RETICULATION

- 2 - Manhole Number
- 1A - Sewer line description
- 1.500* - Sewer invert levels of manhole.
- 1A - Sewer line description.
- 1500 uPVC Class SN10 40.000* at 187.5* - Diameter of pipe, type & class.
- 78.500* at 1108.4* - Distance between manholes, centreline to centreline and grade.
- 11 4.850* - Top of manhole level.

SERVICES

- ↑ - Riser connection (RC)
- - 1000 manhole connection - Benching (BC)
- - Distance from downstream manhole to Y-junction - dimension 'L'.
- - Invert level of soil of house connection branch.
- - Allotment connection dimension 'X'.
- - Allotment connection dimension 'Y'.
- - Type of junction (EX - Existing).
- - Level of top of riser cap.

SEWER MANHOLES

Manhole No.	Easting	Northing
12/N1	465173.04*	7874891.66*

- All dimensions are to centre of chamber.

LAYOUT PLAN

***'-AS CONSTRUCTED**
I, John Francis Weber, Licensed Surveyor, hereby certify that the works detailed on this drawing have been constructed to the dimensions and levels detailed.

John Francis Weber
Date: 11/1/13



- Indicates calculated 'Y' junction level (200mm above sewer main invert)
* - Indicates as constructed information.
All work has been carried out in accordance with LOCAL AUTHORITIES standard details.

Scale
0 5 10 15 20m
THE ORIGINAL OF THIS DOCUMENT IS COMPLETED TO THE SCALE NOTED. AS REPRODUCTION CAN DISTORT SIZE & SHAPE USE ONLY THE DIMENSIONS PROVIDED ON ARCHITECTURAL &/OR ENGINEERING DRAWINGS. VERIFY DIMENSIONS ON SITE BEFORE CONSTRUCTION.

LEVEL DATUM A.M.D.
Horizontal Datum GDA '94 Zone 55
Refer P.I.C. 58132 RL. 7.875
Spoke in concrete.
Ch. ATWOOD ST. & ELLENDALE ST.

NORTHERN CONSULTING
engineers

Civil & Structural Engineers
50 Punari Street, Currejong 4812
Phone: (07) 4725 5550 Fax: (07) 4725 5850
Email: mail@nceng.com.au
Milton Mosser & Associates Pty. Ltd.
ACN 100 817 956

C	AMENDED TO AS CONSTRUCTED - TEMPORARY TURNAROUND REMOVED AND SEWER MAIN CLASS AMENDED.	18/01/2013
B	AMENDED TO AS CONSTRUCTED.	20/12/2012
A	PRELIMINARY - NOT FOR CONSTRUCTION - ISSUED FOR CONSTRUCTION.	29/08/2012
P2	PRELIMINARY - NOT FOR CONSTRUCTION - ISSUED FOR COUNCIL RFL.	13/07/2012
P1	PRELIMINARY - NOT FOR CONSTRUCTION - ISSUED FOR OPERATIONAL WORKS APPROVAL.	15/12/2011

Issue	Description	Date
Drawn	KR	
Date	19/12/2011	
Checked		
Approved		

In Association With
BUSHLAND GROVE PTY LTD

Checked
BUSHLAND GROVE ESTATE STAGE 6, 22 ALLOTMENT RESIDENTIAL SUBDIVISION, ATWOOD STREET, MOUNT LOW

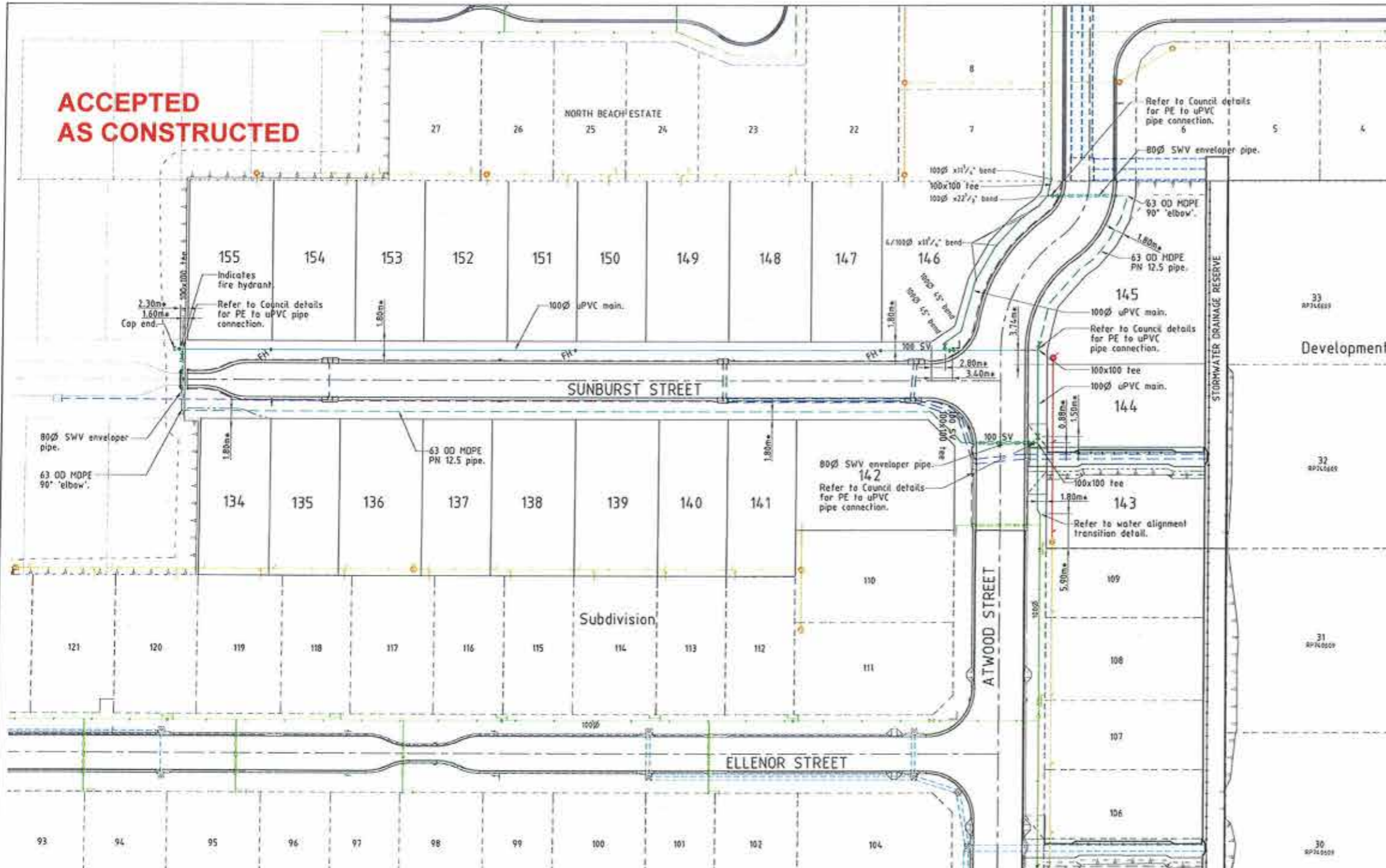
SEWERAGE RETICULATION PLAN & LONGITUDINAL SECTION

Drawing Number
TUR0806/14

Issue
C

REAL PROPERTY DESCRIPTION
Lot 900 on SP241177
Parish of BOHLE
County of ELPHINSTONE
Summergold Street - Mount Low

**ACCEPTED
AS CONSTRUCTED**



- LEGEND**
- GENERAL**
- RP boundary.
 - Top of batter.
 - Toe of batter.
 - Change of grade.
 - Invert of drain.
 - Stormwater drain line.
 - Subsoil drainage.
 - Sewer main.
 - Sewer manhole.
 - uPVC water main.
 - Poly water main.
 - Stormwater drain line.
 - Subsoil drainage.
 - Sewer main.
 - Sewer manhole.
 - Water main.

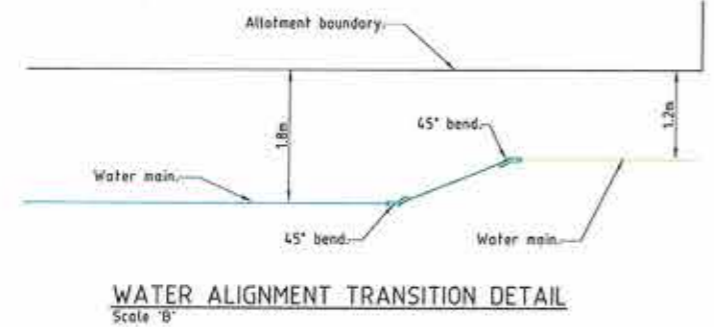
- WATER RETICULATION**
- FH Fire Hydrant.
 - SV Stop Valve.

NOTES:

AS CONSTRUCTED WATER RETICULATION:

- All water supply fixtures (FH, SV etc.) have been installed in accordance with Townsville City Council standards, i.e. adjacent to boundary intersection, U.N.D.
- All uPVC water mains & fittings are Class 16 cast iron outside diameter compatible unless shown otherwise.

LAYOUT PLAN
Scale 'A'



WATER ALIGNMENT TRANSITION DETAIL
Scale 'B'

***'-AS CONSTRUCTED**

I, John Francis Weber, Licensed Surveyor, hereby certify that the works detailed in this drawing have been constructed to the dimensions and levels detailed.

John Francis Weber Date: 11/1/13

Issue	Description	Date
C	AMENDED TO AS CONSTRUCTED. - TEMPORARY TURNAROUND REMOVED.	10/31/2013
B	AMENDED TO AS CONSTRUCTED.	28/12/2012
A	PRELIMINARY - NOT FOR CONSTRUCTION - ISSUED FOR CONSTRUCTION.	29/08/2012
P2	PRELIMINARY - NOT FOR CONSTRUCTION - ISSUED FOR COUNCIL RFL.	13/03/2012
P1	PRELIMINARY - NOT FOR CONSTRUCTION - ISSUED FOR OPERATIONAL WORKS APPROVAL.	19/12/2011

* - Indicates as constructed information.

All work has been carried out in accordance with LOCAL AUTHORITIES' standard details.

NORTHERN CONSULTING
engineers

Civil & Structural Engineers
50 Punari Street, Currajong 4812
Phone: (07) 4725 5550 Fax: (07) 4725 5850
Email: mail@nceng.com.au
Milton Messer & Associates Pty. Ltd.
ACH 100 817 359

Drawn: KR
Date: 10/12/2011
Checked: [Signature]
Approved: [Signature]

In Association With
BUSHLAND GROVE PTY LTD
BUSHLAND GROVE ESTATE
STAGE 6, 22 ALLOTMENT
RESIDENTIAL SUBDIVISION,
ATWOOD STREET, MOUNT LOW

WATER RETICULATION PLAN

Drawing Number: **TUR0806/15**

Issue: **C**

REAL PROPERTY DESCRIPTION
Lot 900 on SP241177
Parish of BOHLE
County of ELPHINSTONE
Summerville Street - Mount Low

LEVEL DATUM A.M.D.
Horizontal Datum GDA '94 Zone 55
Refer P.H. 168932 RL. 7.875
Spike to concrete.
Cor ATWOOD ST. & ELLENDALE ST.

Scale 'A' Scale 'B'

THE ORIGINAL OF THIS DOCUMENT IS COMPLETED TO THE SCALE NOTED. AS REPRODUCTION CAN DISTORT SIZE & SHAPE USE ONLY THE DIMENSIONS PROVIDED ON ARCHITECTURAL &/OR ENGINEERING DRAWINGS. VERIFY DIMENSIONS ON SITE BEFORE CONSTRUCTION.