

LEGEND

- 0.000+ - As constructed surface levels.
- - Stormwater flow arrow.
- - - - - RP boundary.
- - Top of batter.
- - Toe of batter.
- - Change of grade.
- - Stormwater drain line.
- - Subsoil drainage.
- - uPVC water main.
- - Poly water main.
- - Sewer main.
- - Sewer manhole.

NOTES:
 1. All Q50 flows remain within the road & drainage reserves.

Q50 STORMWATER LEVELS

Road Name	Chainage	Description	Q50 Level
ATWOOD STREET	137.232	Roadway	7.680
	189.500	Pits 4/60 & 5/60	7.530
	256.295	Roadway	7.600
SUNBURST STREET	20.000	Pits 3/60 & 1/60	7.530
	60.000	Pits 1/60 & 2/60	7.580
	108.432	Roadway	7.930
	145.000	Pits 1/70 & 2/70	7.890
SURCHARGE PATH	180.000	Roadway	7.830
	0.000	0/60	7.280
	34.000	Boundary	7.430

ACCEPTED AS CONSTRUCTED

LAYOUT PLAN

*- AS CONSTRUCTED
 I, John Francis Weber, Licensed Surveyor, hereby certify that the works detailed on this drawing have been constructed to the dimensions and levels detailed.
 Date: 11/1/13
 John Francis Weber

*- Indicates as constructed information.
 All work has been carried out in accordance with LOCAL AUTHORITIES standard details.

REAL PROPERTY DESCRIPTION
 Lot 900 on SP241117
 Parish of BOHLE
 County of ELPHINSTONE
 Summergold Street - Mount Low

LEVEL DATUM A.M.D.
 Horizontal Datum GDA' 94 Zone 55
 Refer P.M. 168932 RL. 7.875
 Spike in concrete.
 On ATWOOD ST. & ELLENDALE ST.
 Scale
 0 2.5 5 7.5 10m
 THE ORIGINAL OF THIS DOCUMENT IS COMPLETED TO THE SCALE NOTED. AS REPRODUCTION CAN DISTORT SIZE & SHAPE USE ONLY THE DIMENSIONS PROVIDED BY ARCHITECTURAL &/OR ENGINEERING DRAWINGS. VERIFY DIMENSIONS ON SITE BEFORE CONSTRUCTION.

NORTHERN CONSULTING engineers
 Civil & Structural Engineers
 50 Punari Street, Currajong 4812
 Phone: (07) 4725 5550 Fax: (07) 4725 5850
 Email: mail@nceng.com.au
 Milton Messer & Associates Pty. Ltd.
 ACN 100 817 356

C	AMENDED TO AS CONSTRUCTED. - TEMPORARY TURNAROUND REMOVED.	10/01/2013
B	AMENDED TO AS CONSTRUCTED.	28/12/2012
A	PRELIMINARY - NOT FOR CONSTRUCTION - ISSUED FOR CONSTRUCTION.	29/08/2012
P2	PRELIMINARY - NOT FOR CONSTRUCTION - ISSUED FOR COUNCIL RPT.	13/03/2012
P1	PRELIMINARY - NOT FOR CONSTRUCTION - ISSUED FOR OPERATIONAL WORKS APPROVAL.	18/12/2011
Issue	Description	Date
Drawn	In Association With	
KR	BUSHLAND GROVE	
Date	PTY LTD	
19/12/2011		
Checked	BUSHLAND GROVE ESTATE	
Approved	STAGE 6, 22 ALLOTMENT	
	RESIDENTIAL SUBDIVISION,	
	ATWOOD STREET, MOUNT LOW	
COPYRIGHT ©		
Drawing Number		Issue
TUR0806/04		C

**ACCEPTED
AS CONSTRUCTED**

NORTH BEACH ESTATE

LEGEND

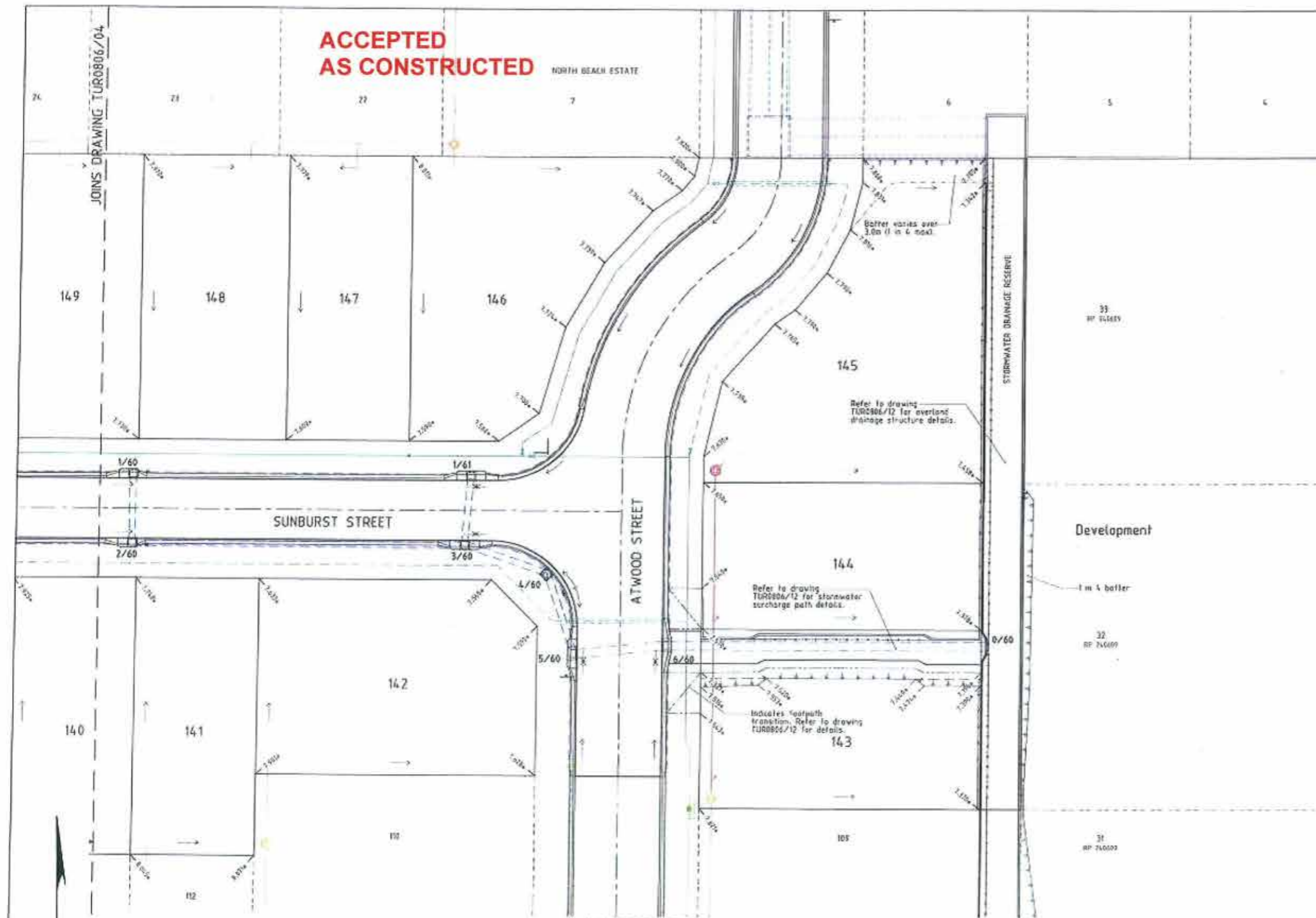
- 12.000+ - As constructed surface levels.
- - Stormwater flow arrow.
- - - - - RP boundary.
- - - - - Screen fence.
- - - - - Top of batter.
- - - - - Top of batter.
- - - - - Change of grade.
- - - - - Invert of drain.
- - - - - Stormwater drain line.
- - - - - Subsoil drainage.
- - - - - Sewer main.
- - - - - Sewer manhole.
- - - - - PVC water main.
- - - - - Poly water main.
- - - - - Sewer main.
- - - - - Sewer manhole.
- - - - - Water main.

NOTES:

1. All Q50 flows remain within the road & drainage reserves.

Q50 STORMWATER LEVELS

Road Name	Chainage	Description	Q50 Level
ATWOOD STREET	137.232	Roadway	7.488
	189.500	Pts 4/60 & 5/60	7.530
SUNBURST STREET	254.795	Roadway	7.600
	20.000	Pts 3/60 & 4/60	7.530
	64.000	Pts 1/60 & 2/60	7.580
SURCHARGE PATH	108.437	Roadway	7.930
	145.000	Pts 1/70 & 2/70	7.890
SURCHARGE PATH	180.000	Roadway	7.830
	8.000	0/60	7.200
	34.000	Boundary	7.430



LAYOUT PLAN

*** - AS CONSTRUCTED**

I, John Francis Weber, Licensed Surveyor, hereby certify that the works detailed on this drawing have been constructed to the dimensions and levels detailed.

J.F. Weber 20/12/12.

* - Indicates as constructed information.

All work has been carried out in accordance with LOCAL AUTHORITIES standard details.

REAL PROPERTY DESCRIPTION
Lot 900 on SP241077
Parish of BOMLE
County of ELPHINSTONE
Sunmergold Street - Mount Low

LEVD. DATUM A.M.D.
Municipal Datum GDA 54 Zone 55
Refer P.M. 115132 SL 7815
Scale 1:1000
In ATWOOD ST & ELLENDALE ST.

Scale
1:1000
THE ORIGINAL OF THIS DOCUMENT IS COMPLETED TO THE SCALE NOTED.
AS REPRODUCTION CAN DISTORT SIZE & SHAPE USE ONLY THE
COPYRIGHT INFORMATION ON ARCHITECTURAL, ENGINEERING, PLANNING,
AND SURVEYING DRAWINGS TO SIZE ACTUAL DIMENSIONS.



Civil & Structural Engineers
50 Punari Street, Crowsnest 4812
Phone: (07) 4725 5550 Fax: (07) 4725 5650
Email: mail@nceng.com.au
Miles Hester & Associates Pty. Ltd.
ACN 110 817 150

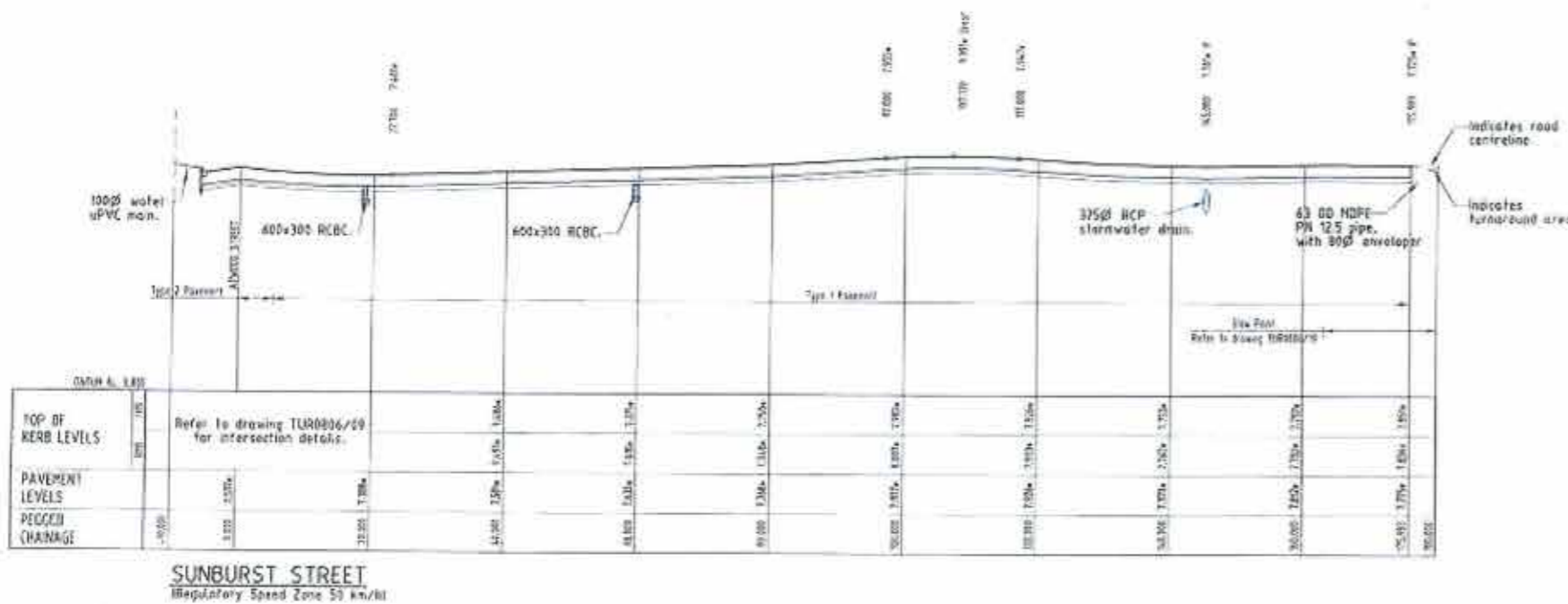
Issue	Description	Date
B	AMENDED TO AS CONSTRUCTED.	20/12/2012
A	PRELIMINARY - NOT FOR CONSTRUCTION - ISSUED FOR CONSTRUCTION.	24/08/2011
1	PRELIMINARY - NOT FOR CONSTRUCTION - ISSUED FOR OPERATIONAL WORKS APPROVAL.	19/12/2011

Drawn KR	In Association With BUSHLAND GROVE PTY LTD	CUT/FILL LAYOUT PLAN
Date 19/12/2011		
Checked [Signature]	BUSHLAND GROVE ESTATE STAGE 6, 22 ALLOTMENT RESIDENTIAL SUBDIVISION, ATWOOD STREET, MOUNT LOW	Drawing Number TUR0806/05
Approved [Signature]		Issue B

PAVEMENT TABLE

PAVEMENT TYPE	PAVEMENT DESCRIPTION
Type 1	25mm A.C. wearing course. 150mm base course, DTHR Type 2.1 (CBR00). 100mm sub-base course, DTHR Type 2.3 (CBR45). 100mm lower sub-base course, DTHR Type 2.5 (CBR10). 150mm selected subgrade (CBR10).
Type 2	25mm A.C. wearing course. 150mm base course, DTHR Type 2.1 (CBR00). 100mm sub-base course, DTHR Type 2.3 (CBR45). 125mm lower sub-base course, DTHR Type 2.5 (CBR10). 150mm selected subgrade (CBR10).

**ACCEPTED
AS CONSTRUCTED**



LONGITUDINAL SECTIONS

Scale 'A' - Horizontal
Scale 'B' - Vertical

***-AS CONSTRUCTED**

I, John Francis Weber, Licensed Surveyor, hereby certify that the works detailed on this drawing have been constructed to the dimensions and levels detailed.

John Francis Weber
Date: 20/12/12

AS CONSTRUCTED

Northern Consulting Engineers hereby certify that the works detailed on this drawing have been constructed to the dimensions and levels detailed.

Andrew Wallace
Date: 20/12/12

* - Indicates as constructed information.

All work has been carried out in accordance with LOCAL AUTHORITIES standard details.

REFER TO DRAWING TUR0806/07 FOR ROAD TYPICAL SECTIONS.

REAL PROPERTY DESCRIPTION
Lot 930 on SP24117
Parish of BOHLE
County of ELPHINSTONE
Summergold Street - Mount Low

LEVEL DATUM A.M.S.L.
Horizontal Datum GDA 95 Zone 55
Refer to P. 21 11882 RL 7.075
Spikes in concrete
10' ATWOOD ST. & ELLENDALE ST.

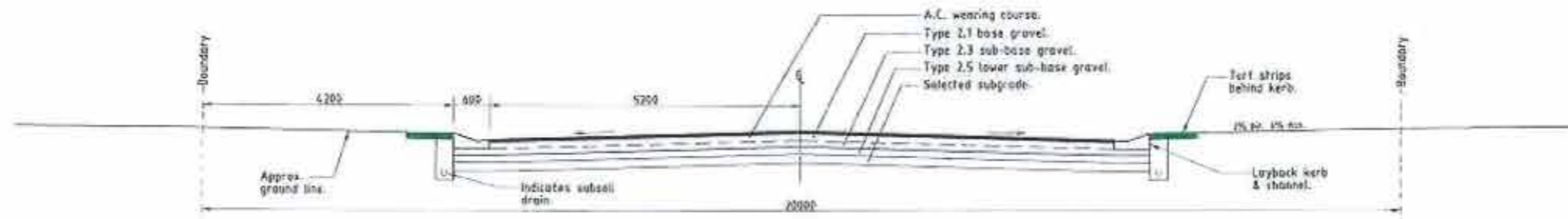
Scale 'A' - Horizontal
Scale 'B' - Vertical
THE ORIGINAL OR BEST COPY OF THIS DOCUMENT IS SUPPLIED TO THE SCALE NOTED.
AS SHOWN ON THE DRAWING. SIZE & SHAPE USE ONLY THE DIMENSIONS PROVIDED ON ARCHITECTURAL & CIVIL ENGINEERING DRAWINGS.
VERIFY DIMENSIONS ON SITE BEFORE CONSTRUCTION.



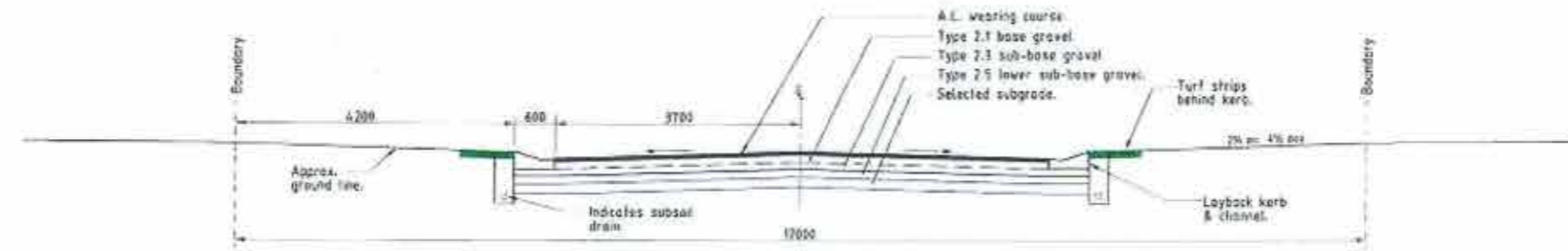
Civil & Structural Engineers
50 Punt Street, Currajong 4812
Phone: (07) 4725 5550 Fax: (07) 4725 5950
Email: mail@nceng.com.au
Milton Messer & Associates Pty. Ltd.
ACN 100 817 106

Issue	Description	Date
1	APPROVED TO AS CONSTRUCTED.	20/12/2012
2	PRELIMINARY - NOT FOR CONSTRUCTION - ISSUED FOR CONSTRUCTION.	19/12/2012
3	PRELIMINARY - NOT FOR CONSTRUCTION - ISSUED FOR COUNCIL REVIEW.	19/12/2012
4	PRELIMINARY - NOT FOR CONSTRUCTION - ISSUED FOR OPERATIONAL WORKS APPROVAL.	19/12/2012

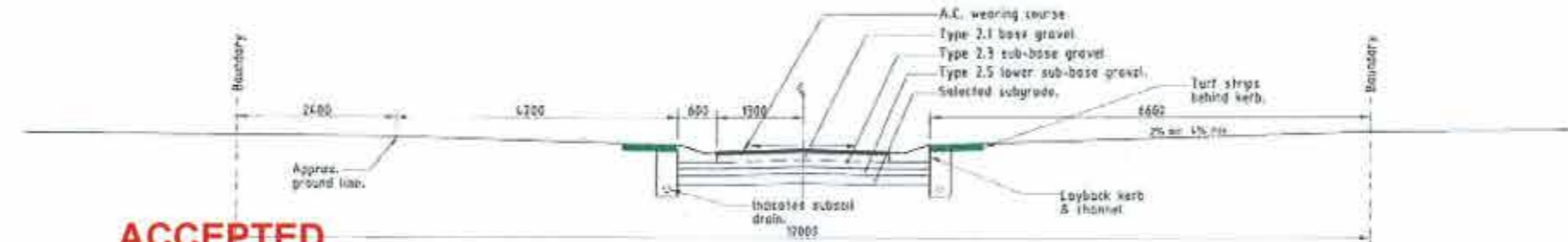
Drawn KR	In Association With BUSHLAND GROVE PTY LTD	ROAD LONGITUDINAL SECTIONS
Date 19/12/2011		
Checked AS	BUSHLAND GROVE ESTATE STAGE 6, 22 ALLOTMENT RESIDENTIAL SUBDIVISION, ATWOOD STREET, MOUNT LOW	Drawing Number TUR0806/06
Copyright ©		Issue B



TYPICAL SECTION - ATWOOD STREET



TYPICAL SECTION - SUNBURST STREET



TYPICAL SECTION - SUNBURST STREET (SLOW POINT)

**ACCEPTED
AS CONSTRUCTED**

AS CONSTRUCTED
Northern Consulting Engineers hereby certify that the works detailed on this drawing have been constructed to the dimensions and levels detailed.
Andrew Gill Watson 20/12/12

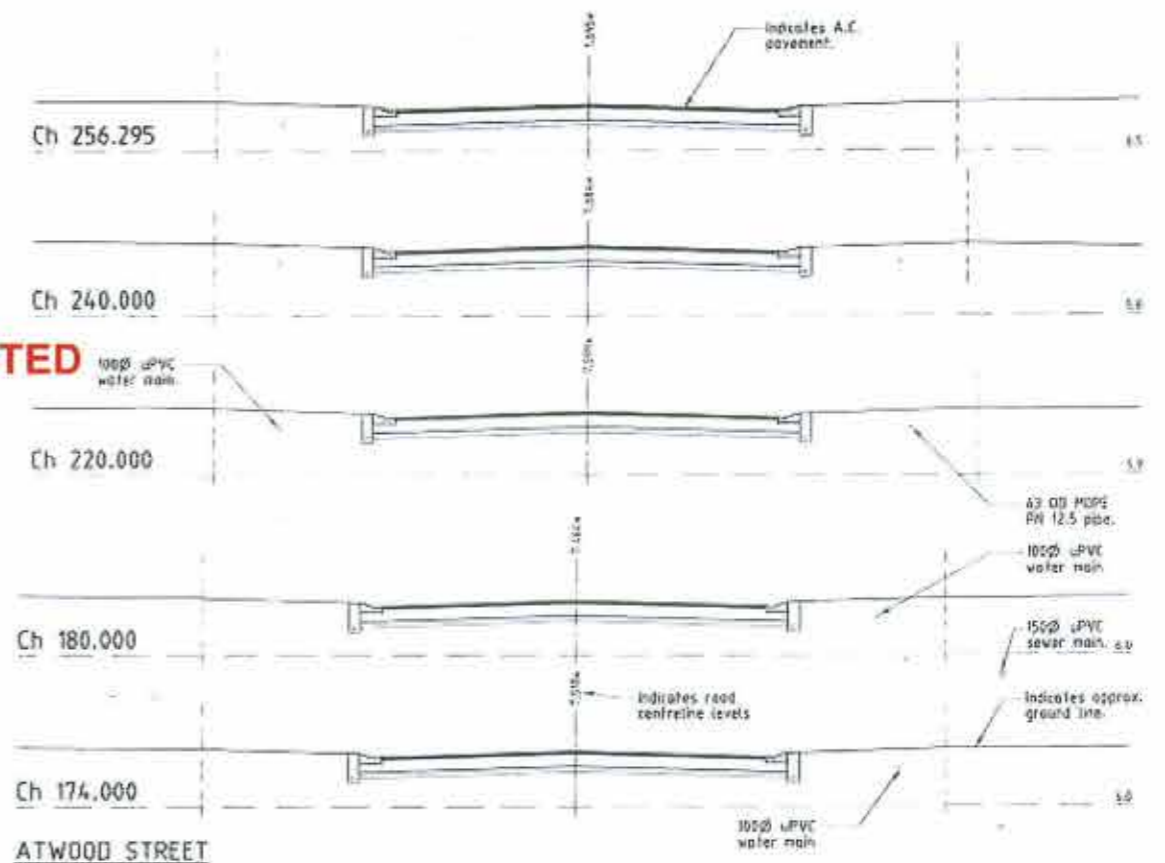
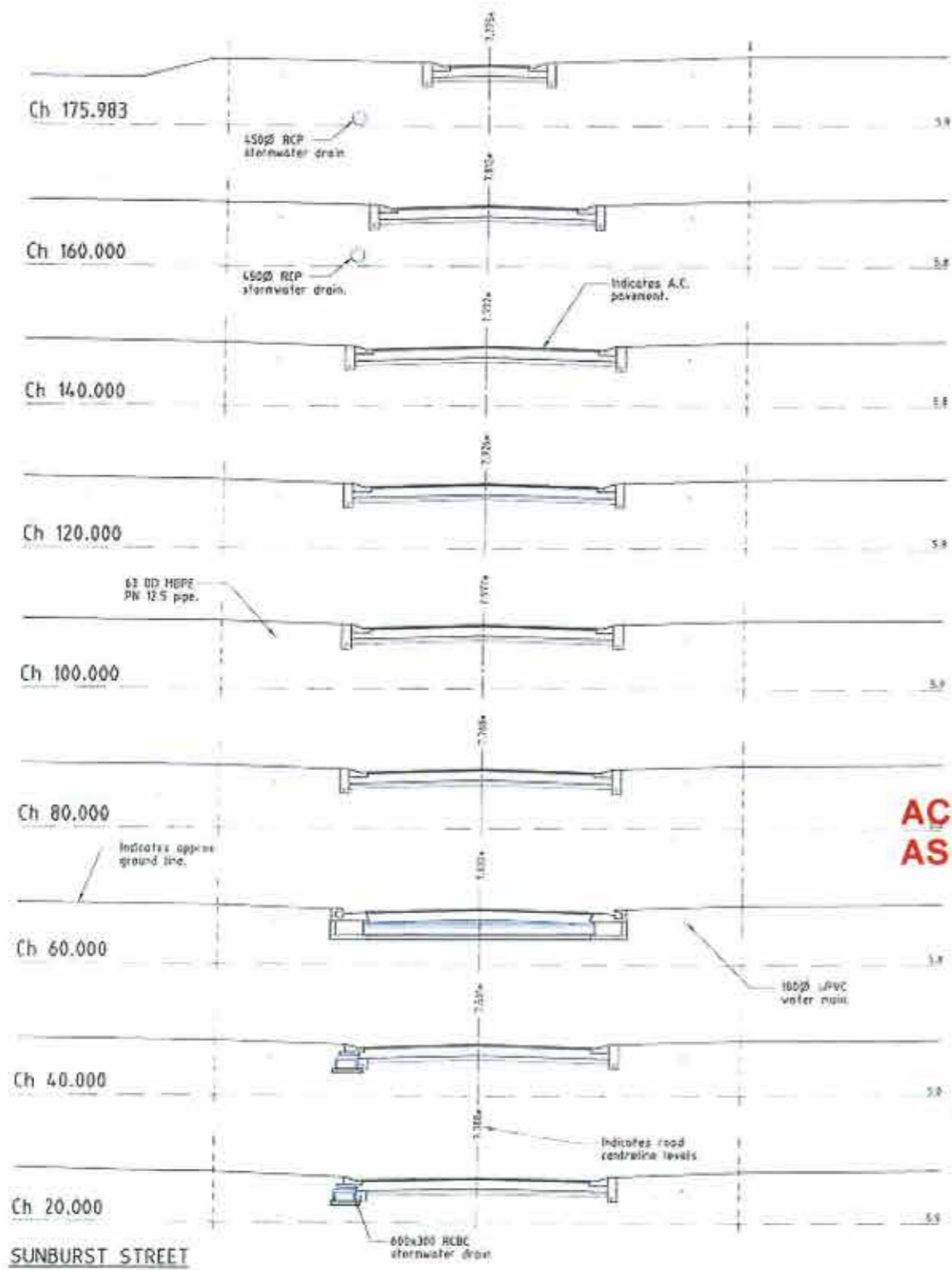
All work has been carried out in accordance with LOCAL AUTHORITIES standard details.

NORTHERN CONSULTING engineers
Civil & Structural Engineers
50 Panari Street, Currajong 4812
Phone: (07) 4725 5550 Fax: (07) 4725 5850
Email: mail@nceng.com.au
Nolan Messer & Associates Pty Ltd
ACN 100 817 395

Issue	Description	Date
B	APPROVED TO AS CONSTRUCTED	22/12/2012
A	PRELIMINARY - NOT FOR CONSTRUCTION - ISSUED FOR ENFORCEMENT	26/08/2012
P2	PRELIMINARY - NOT FOR CONSTRUCTION - ISSUED FOR CO-DEVELOPMENT	12/03/2010
P1	PRELIMINARY - NOT FOR CONSTRUCTION - ISSUED FOR OPERATIONAL WORKS APPROVAL	19/12/2011
Drawn	In Association With	
KB	BUSHLAND GROVE PTY LTD	
Date		
19/12/2011		
Checked		
	BUSHLAND GROVE ESTATE STAGE 6, 22 ALLOTMENT RESIDENTIAL SUBDIVISION, ATWOOD STREET, MOUNT LOW	
Approved		
COPYRIGHT		
Drawing Number		Issue
TUR0806/07		B

REAL PROPERTY DESCRIPTION
Lot 380 on SP241193
Parish of BOHLE
County of ELPHINSTONE
Businegold Street - Mount Low

Scale
0 500 1000 2000
LEVEL Datum A.M.D.
Horizontal Datum GDA 94 Zone 55
Refer P.P. 158131 RL 1.815
Spoke in concrete
Dr. ATWOOD ST. & ELLINGDALE ST
THE ORIGINAL OF THIS DOCUMENT IS STORED TO THE SCALE BEING
AS APPROVED FOR CONSTRUCTION AND SHALL BE USED ONLY FOR THE
PURPOSES PROVIDED OR MODIFIED BY THE ENGINEERS FORWARDED
HEREBY SUBJECT TO THE LOCAL AUTHORITY'S APPROVAL



**ACCEPTED
AS CONSTRUCTED**

CROSS SECTIONS

***-AS CONSTRUCTED**

I, John Francis Weber, Licensed Surveyor, hereby certify that the works detailed on this drawing have been constructed to the dimensions and levels detailed.

J. Weber Date: 20/12/12.
John Francis Weber

* Indicates as constructed information.

All work has been carried out in accordance with LOCAL AUTHORITIES standard details.

REFER TO DRAWING TUR0806/07 FOR ROAD TYPICAL SECTIONS.

Issue	Description	Date
B	AMENDED TO AS CONSTRUCTED	20/12/2012
A	PRELIMINARY - NOT FOR CONSTRUCTION - ISSUED FOR REGISTERATION	19/08/2012
P1	PRELIMINARY - NOT FOR CONSTRUCTION - ISSUED FOR CO-DEVELOPER, RPI	13/03/2012
P2	PRELIMINARY - NOT FOR CONSTRUCTION - ISSUED FOR OPERATIONAL WORKS APPROVAL	19/11/2011

REAL PROPERTY DESCRIPTION
Lot 900 on SP241177
Parish of BOHLE
County of ELPINSTONE
Sunbergald Street - Mount Low

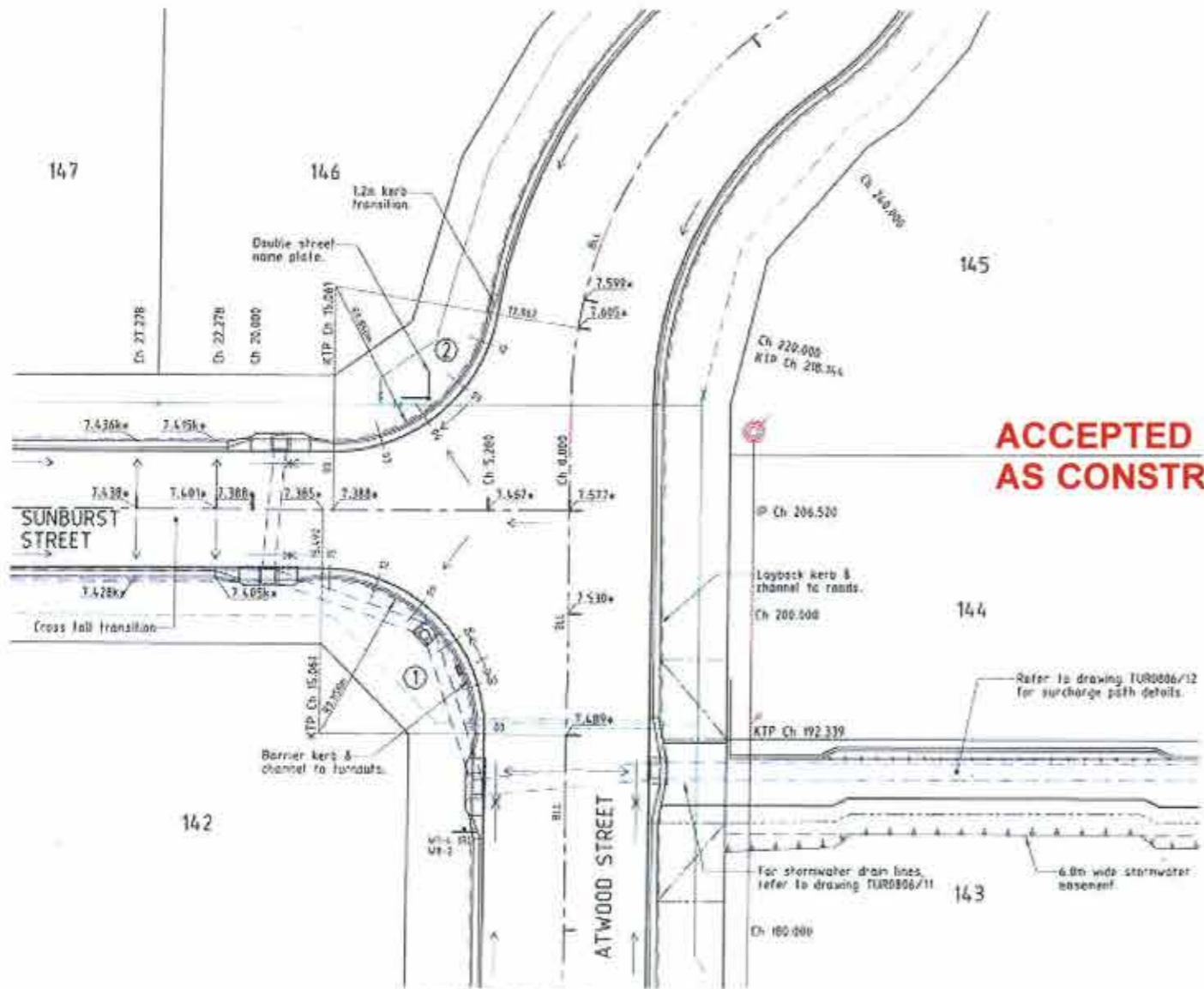
LEVEL DATUM AND
Horizontal Datum GDA 94 Zone 55
Refer P.M. 18932 RL 1.815
SP44 of 1/2012
For ATWOOD ST. & ELLINGDALE ST.

Scale
1:100
THE ORIGINAL OF THIS DOCUMENT IS IMPRINTED TO THE SCALE NOTED.
AS APPROVED FOR CONSTRUCTION BY THE LOCAL AUTHORITY.
DRAWINGS PROVIDED ON ARCHITECTURAL, CIVIL ENGINEERING DRAWING
TABLES. DIMENSIONS ON ALL DRAWINGS SHALL BE TO THE DIMENSIONS SHOWN ON THESE DRAWINGS.



Civil & Structural Engineers
50 Punari Street, Currajong 4012
Phone: (07) 4725 5550 Fax: (07) 4725 0850
Email: mail@ntceeng.com.au
Nolan Shewar & Associates Pty Ltd
ACN 100 817 355

Drawn KR Date 19/12/2011 Checked [Signature] Applied [Signature] COPYRIGHT ©	In Association With BUSHLAND GROVE PTY LTD BUSHLAND GROVE ESTATE STAGE 6, 22 ALLOTMENT RESIDENTIAL SUBDIVISION, ATWOOD STREET, MOUNT LOW	ROAD CROSS SECTIONS Drawing Number TUR0806/08 Issue B
--	--	--



**ACCEPTED
AS CONSTRUCTED**

INTERSECTION PLAN
Scale 'A'

LEGEND

- 12.000+ - As constructed surface level.
- 12.000+ - As constructed back of kerb level.
- - Direction of fall.
- - Top of batter.
- - Toe of batter.
- - Change of grade.
- - Invert of drain.
- - Stormwater drain line.
- - Subsoil drainage.
- - Sewer main.
- - Sewer manhole.
- - uPVC water main.
- - Poly water main.

PAVEMENT MARKING
 BLL - Broken Lane Line
 --- - Broken Lane Line

SIGNAGE

CODE	EXAMPLE	DESCRIPTION
W1-6R1		Reverse Curve
W2-2		Advisory Speed 30km/h

All lining and signage is installed in accordance with the M.U.T.C.D.

***-AS CONSTRUCTED**
 I, John Francis Weber, Licensed Surveyor, hereby certify that the works detailed on this drawing have been constructed to the dimensions and levels detailed.
J.F. Weber
 Date 20/12/12



REAL PROPERTY DESCRIPTION
 Lot 100 on SP24/1111
 Parish of BIRLA
 County of ELPHINSTONE
 Sunningdale Street - Mount Low

LEVEL DATUM A.M.S.L.
 Horizontal Datum GDA 94 Zone 55
 Refer P.M. 100017 M. 1.805
 Spoke is concrete
 For ATWOOD ST. & ELLENDALE ST.
 THIS DRAWING IS NOT VALID UNLESS REFERRED TO THE WORKS ORDER
 AS REPRESENTATION CAN BE MADE AND SHALL USE ONLY THE
 DIMENSIONS PROVIDED ON ARCHITECTURAL AND ENGINEERING DRAWINGS
 VERIFY DIMENSIONS ON SITE BEFORE CONSTRUCTION.

* - indicates as constructed information.
 All work has been carried out in accordance with LOCAL AUTHORITIES standard details.



Civil & Structural Engineers
 50 Puttick Street, Currajong 4812
 Phone: [07] 4725 5550 Fax: [07] 4725 5850
 Email: mail@ncoeng.com.au
 Milton Messer & Associates Pty Ltd
 A/CN 100 R17 335

TURNOUT 1
 Scale 'B' - Horizontal
 Scale 'C' - Vertical

BACK OF KERB LEVELS	1.25	1.45	1.65	1.85	2.05	2.25	2.45
PEGGED CHAINAGE	0.00	3.00	6.00	9.00	12.00	15.00	18.00

TURNOUT 2
 Scale 'B' - Horizontal
 Scale 'C' - Vertical

BACK OF KERB LEVELS	1.00	1.15	1.30	1.45	1.60	1.75	1.90
PEGGED CHAINAGE	0.00	3.00	6.00	9.00	12.00	15.00	18.00

Issue	Description	Date
D	AMENDED TO AS CONSTRUCTED	20/12/2012
P1	PRELIMINARY - NOT FOR CONSTRUCTION - ISSUED FOR OPERATIONAL UMMS APPROVAL	20/12/2012
P2	PRELIMINARY - NOT FOR CONSTRUCTION - ISSUED FOR OPERATIONAL UMMS APPROVAL	19/12/2011

Drawn by	In Association With	INTERSECTION PLAN
15/12/2011	BUSHLAND GROVE PTY LTD	
Checked	BUSHLAND GROVE ESTATE STAGE 6, 22 ALLOTMENT RESIDENTIAL SUBDIVISION, ATWOOD STREET, MOUNT LOW	Drawing Number
Applied		TUR0806/09
COPYRIGHT ©		Issue
		B

Point N°	Chainage	Offset Distance (Back of Kerb)	RL (back of K&C)
1	175.983	1.900m (R)	7.852m
2	172.517	1.900m (R)	7.846m
3	167.958	3.052m (R)	7.828m
4	163.010	4.300m (R)	7.811m
5	175.983	1.900m (L)	7.851m
6	172.517	1.900m (L)	7.849m
7	167.958	3.052m (L)	7.826m
8	163.018	4.300m (L)	7.806m

PAVEMENT MARKING:-

SL ——— 100 Separation Line.

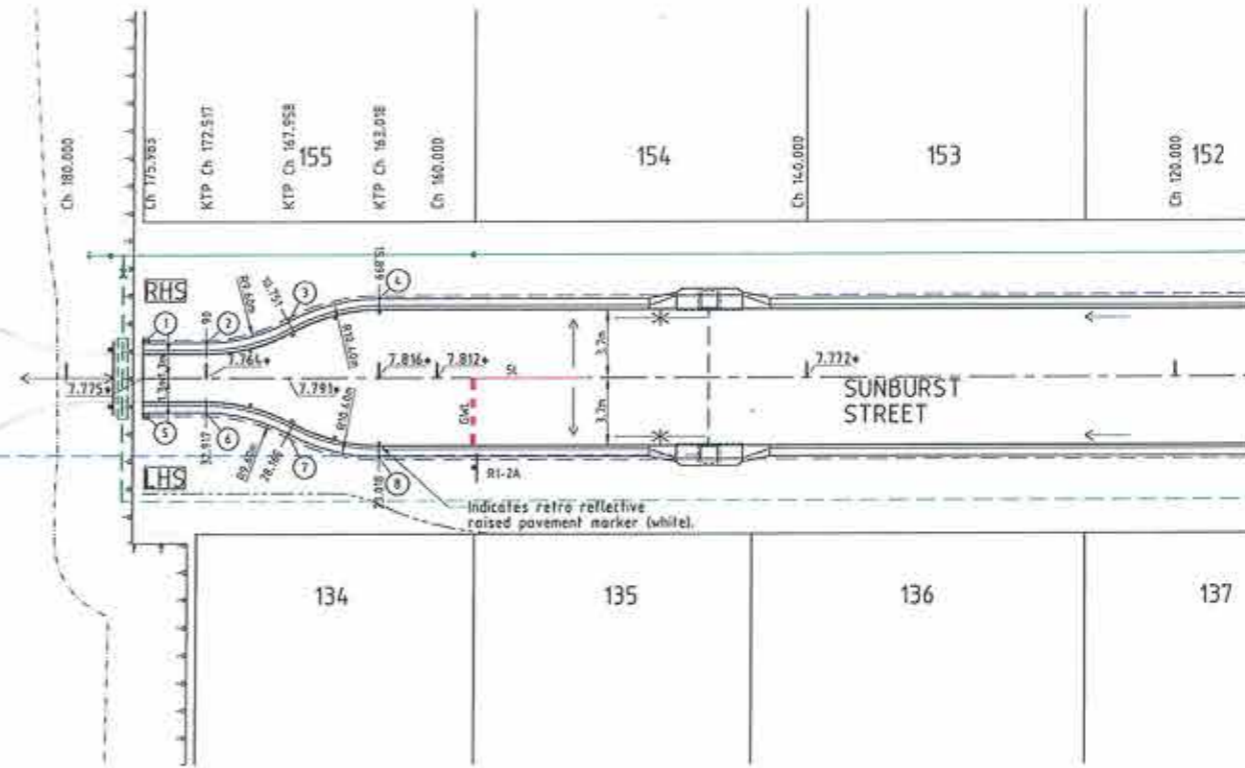
GWL — 600mm Point 600mm Gap — 300 Giveaway Line.

SIGNAGE:-

CODE	EXAMPLE	DESCRIPTION
RI-2A		Giveaway

All linemarking & signage is installed in accordance with the M.U.T.C.D.

**ACCEPTED
AS CONSTRUCTED**



SLOW POINT PLAN

LEGEND

- 12.000+ ——— As constructed surface level.
- ——— Direction of fall.
- Top of batter.
- Tee of batter.
- Change of grade.
- Stormwater drain line.
- Subsoil drainage.
- uPVC water main.
- Poly water main.

*-AS CONSTRUCTED

I, John Francis Weber, Licensed Surveyor, hereby certify that the works detailed on this drawing have been constructed to the dimensions and levels detailed.

John Francis Weber
Date: 11/1/13



REAL PROPERTY DESCRIPTION
Lot 900 on SP241177
Perish of BOHLE
County of ELPHINSTONE
Summergold Street - Mount Low

LEVEL DATUM A.M.D.
Horizontal Datum GDA' 94 Zone 55
Refer P.M. 108932 RL: 7.875
Spike in concrete.
Corr ATWOOD ST. & ELLENDALE ST.

Scale
0 2 4 6 8
THE ORIGINAL OF THIS DOCUMENT IS COMPLETED TO THE SCALE NOTED.
AS REPRODUCTION CAN DISTORT SIZE & SHAPE USE ONLY THE DIMENSIONS PROVIDED ON ARCHITECTURAL &/OR ENGINEERING DRAWINGS.
VERIFY DIMENSIONS ON SITE BEFORE CONSTRUCTION.



**NORTHERN
CONSULTING**
engineers

Civil & Structural Engineers
50 Punari Street, Currajong 4612
Phone: [07] 4725 5550 Fax: [07] 4725 5850
Email: mail@nceng.com.au
Milon Messer & Associates Pty. Ltd
ACN 100 817 350

* - indicates as constructed information.

All work has been carried out in accordance with LOCAL AUTHORITIES standard details.

C AMENDED TO AS CONSTRUCTED. - TEMPORARY TURNAROUND REMOVED. 10/01/2013
B AMENDED TO AS CONSTRUCTED. 25/12/2012
A PRELIMINARY - NOT FOR CONSTRUCTION - ISSUED FOR CONSTRUCTION. 29/08/2012
P2 PRELIMINARY - NOT FOR CONSTRUCTION - ISSUED FOR COUNCIL RFL. 13/03/2012
P1 PRELIMINARY - NOT FOR CONSTRUCTION - ISSUED FOR OPERATIONAL WORKS APPROVAL. 19/12/2011

Issue	Description	Date
Drawn KR	In Association With BUSHLAND GROVE PTY LTD	
Date 19/12/2011		
Checked <i>[Signature]</i>	BUSHLAND GROVE ESTATE STAGE 6, 22 ALLOTMENT RESIDENTIAL SUBDIVISION, ATWOOD STREET, MOUNT LOW	
Approved <i>[Signature]</i>		
Drawing Number TUR0806/10		Issue C

COPYRIGHT ©