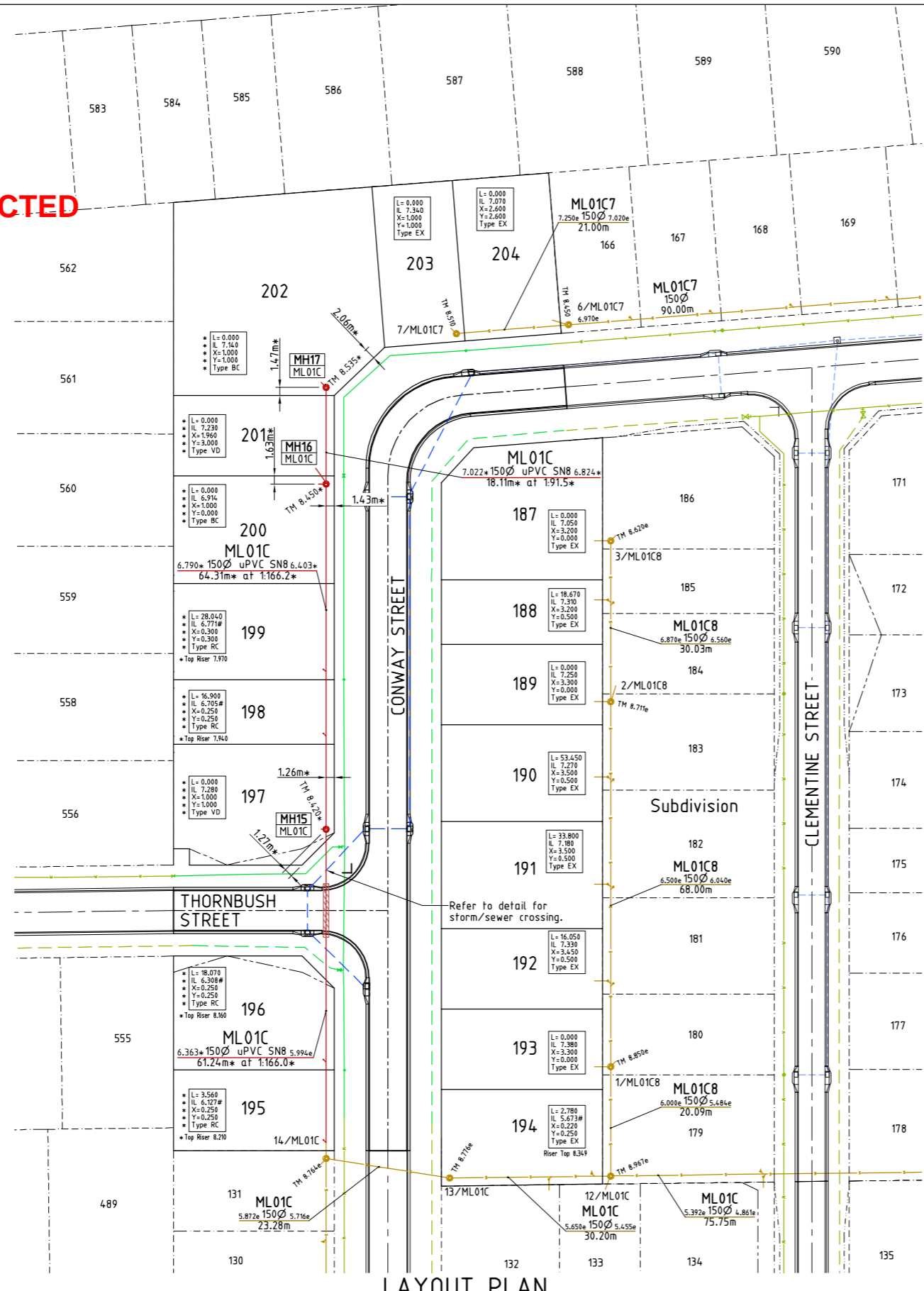


**ACCEPTED
AS CONSTRUCTED**



LEGEND

- GENERAL:-**
- - - - - RP boundary.
 - - - - - Change of grade.
 - - - - - Stormwater drain line.
 - - - - - Sewer main.
 - - - - - Sewer manhole.
 - - - - - uPVC water main.
 - - - - - Poly water main.
 - - - - - Stormwater drain line.
 - - - - - Sewer main.
 - - - - - Sewer manhole.
 - - - - - Water main.
 - - - - - Poly water main.

NOTES:

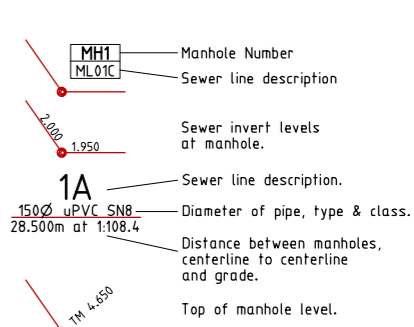
1. All sewer manholes are 1050Ø as per Council details U.N.O.
2. All sewer manhole tops are type 2 class 'B' covers U.N.O.
3. All 150Ø sewer mains & fittings are uPVC class SN8.
4. All 100Ø sewer mains & fittings are uPVC class SN10.
5. Service connection invert levels marked with a '#' indicates the invert level on the sewer main + 200mm with allotment drainage capable of connecting between the top of riser & level denoted with '#'.
 Example: 6.824* at 1.91.5*

SEWER MANHOLES

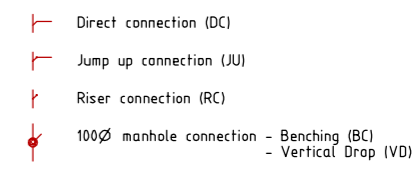
Manhole No.	Easting	Northing
17/ML01C	464368.599*	7874911.981*
16/ML01C	464366.780*	7874893.966*
15/ML01C	464360.444*	7874829.974*

- All dimensions are to centre of chamber.

SEWERAGE RETICULATION:-



SERVICES:-



AS CONSTRUCTED

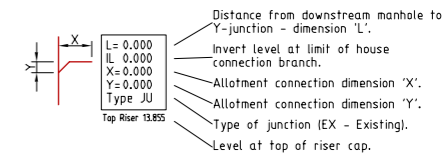
Rowlands Surveys Pty Ltd (ACN 010 025 260) hereby certify that the works detailed on this drawing, denoted *, have been constructed to the dimensions and levels shown.

Laurence John Nolan
 Director/Registered Surveyor
 Date: 09/03/2018

AS CONSTRUCTED

I, Andrew Ian Wallace of Northern Consulting Engineers hereby certify that the works as shown on the as constructed drawings reflect any changes that were made during the course of construction.

Andrew Ian Wallace
 Andrew Ian Wallace - (RPEQ No. 6743)
 Date: 26/03/2018



LAYOUT PLAN



REAL PROPERTY DESCRIPTION
 Lot 900 on SP278572
 Parish of BÖHLE
 County of ELPHINSTONE
 Conway Street - Mount Low

LEVEL DATUM A.H.D. (Der)
 Horizontal Datum GDA' 94 Zone 55
 Refer PM 19351B RL. 8.195
 Bolt and washer in kerb
 FREMONT STREET.

Scale 0 5 10 20m
 THE ORIGINAL OF THIS DOCUMENT IS COMPLETED TO THE SCALE NOTED.
 AS REPRODUCTION CAN DISTORT SIZE & SHAPE USE ONLY THE
 DIMENSIONS PROVIDED ON ARCHITECTURAL &/OR ENGINEERING DRAWINGS.
 VERIFY DIMENSIONS ON SITE BEFORE CONSTRUCTION.

All work carried out in accordance with LOCAL AUTHORITIES standard details.

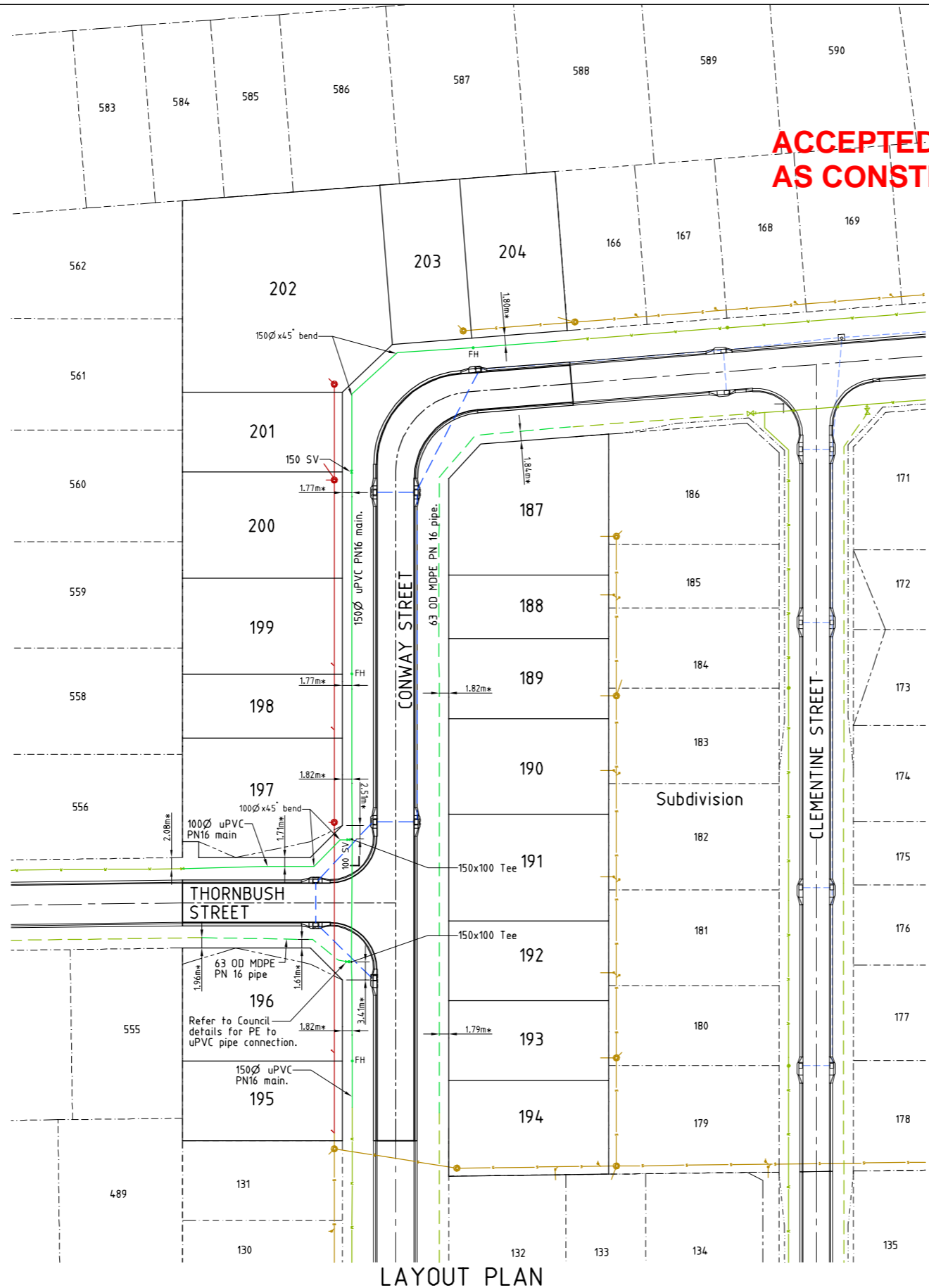


Civil & Structural Engineers
 50 Punari Street, Currajong 4812
 Phone: (07) 4725 5550 Fax: (07) 4725 5850
 Email: mail@nceng.com.au
 Milton Messer & Associates Pty. Ltd.
 ACN 100 817 356

Issue	Description	Date
B	AMENDED TO AS CONSTRUCTED.	06/03/2018
A	ISSUED FOR CONSTRUCTION.	27/03/2017
P1	PRELIMINARY - NOT FOR CONSTRUCTION - ISSUED FOR OPERATIONAL WORKS APPROVAL.	14/12/2016

Drawn	In Association With	SEWERAGE RETICULATION PLAN
KJM	BUSHLAND GROVE PTY LTD	
Date	BUSHLAND GROVE ESTATE	
14/12/2016	STAGE 15, 18 ALLOTMENT	
Checked	RESIDENTIAL SUBDIVISION,	
HAB	MOUNT LOW	
Approved		
COPYRIGHT ©		
Drawing Number		Issue
TUR0815/10		B





- LEGEND**
GENERAL:-
- - - - - RP boundary.
 - - - - - Change of grade.
 - - - - - Stormwater drain line.
 - - - - - Sewer main.
 - - - - - Sewer manhole.
 - - - - - uPVC water main.
 - - - - - Poly water main.
 - - - - - Stormwater drain line.
 - - - - - Sewer main.
 - - - - - Sewer manhole.
 - - - - - Water main.
 - - - - - Poly water main.

- NOTES:**
AS CONSTRUCTED WATER RETICULATION:
- All water supply fixtures (FH, SV etc.) have been installed in accordance with Townsville City Council standards. ie. adjacent to boundary intersection, U.N.O.
 - All uPVC water mains & fittings are Class 16, C.I.O.D. compatible unless shown otherwise.
- WATER RETICULATION:-
- FH Fire Hydrant.
 - SV Stop Valve.

AS CONSTRUCTED
Rawlands Surveys Pty Ltd (ACN 010 025 260) hereby certify that the works detailed on this drawing, denoted *, have been constructed to the dimensions and levels shown.

Laurence John Nolan
Director/Registered Surveyor
Date: 09/03/2018

AS CONSTRUCTED
I, Andrew Ian Wallace of Northern Consulting Engineers hereby certify that the works as shown on the as constructed drawings reflect any changes that were made during the course of construction.

Andrew Ian Wallace
Andrew Ian Wallace - (RPEQ No. 6743)
Date: 26/03/2018



REAL PROPERTY DESCRIPTION
Lot 900 on SP278572
Parish of BOHLE
County of ELPHINSTONE
Conway Street - Mount Low

LEVEL DATUM A.H.D. (Der)
Horizontal Datum GDA 94 Zone 55
Refer PM 19351B RL. 8.195
Bolt and washer in kerb
FREMONT STREET.

Scale 0 5 10 15 20m
THE ORIGINAL OF THIS DOCUMENT IS COMPLETED TO THE SCALE NOTED.
AS REPRODUCTION CAN DISTORT SIZE & SHAPE USE ONLY THE DIMENSIONS PROVIDED ON ARCHITECTURAL &/OR ENGINEERING DRAWINGS.
VERIFY DIMENSIONS ON SITE BEFORE CONSTRUCTION.

All work carried out in accordance with LOCAL AUTHORITIES standard details.



Civil & Structural Engineers
50 Punari Street, Currajong 4812
Phone: [07] 4725 5550 Fax: [07] 4725 5850
Email: mail@nceng.com.au
Milton Messer & Associates Pty. Ltd.
ACN 100 817 356

B	AMENDED TO AS CONSTRUCTED.	06/03/2018
A	ISSUED FOR CONSTRUCTION.	27/03/2017
P2	PRELIMINARY - NOT FOR CONSTRUCTION - ISSUED FOR REQUEST FOR INFORMATION.	27/02/2017
P1	PRELIMINARY - NOT FOR CONSTRUCTION - ISSUED FOR OPERATIONAL WORKS APPROVAL.	14/12/2016
Issue	Description	Date
Drawn KJM Date 14/12/2016	In Association With BUSHLAND GROVE PTY LTD	WATER RETICULATION PLAN
Checked HAB Approved	BUSHLAND GROVE ESTATE STAGE 15, 18 ALLOTMENT RESIDENTIAL SUBDIVISION, MOUNT LOW	
COPYRIGHT ©	Drawing Number TUR0815/11	Issue B