

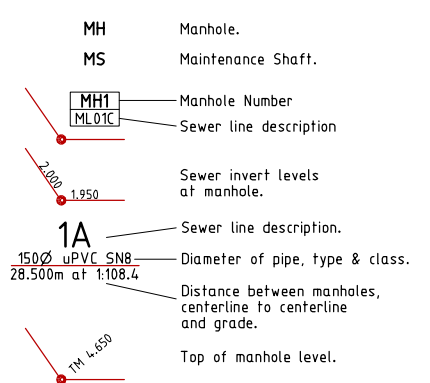
LEGEND

- GENERAL:-**
- - - - - RP boundary.
 - - - - - Top of batter.
 - - - - - Toe of batter.
 - - - - - Change of grade.
 - - - - - Stormwater drain line.
 - - - - - Sewer main.
 - - - - - Sewer manhole.
 - - - - - uPVC water main.
 - - - - - Poly water main.
 - - - - - Stormwater drain line.
 - - - - - Sewer main.
 - - - - - Sewer manhole.
 - - - - - Water main.
 - - - - - Poly water main.

NOTES:

1. All sewer manholes are 1050Ø as per Council details U.N.O.
2. All sewer maintenance shafts are 600Ø as per Council details U.N.O.
3. All sewer manhole tops are type 2 class 'B' covers U.N.O.
4. All 150Ø sewer mains & fittings are uPVC class SN8.
5. All 100Ø sewer mains & fittings are uPVC class SN10.
6. Service connection invert levels marked with a '#' indicates the invert level on the sewer main + 200mm with allotment drainage capable of connecting between the top of riser & level denoted with '#'.
 Example: 1.931#

SEWERAGE RETICULATION:-



SEWER MANHOLES

Manhole No.	Easting	Northing
MH3/ML01C6	464569.528*	7874870.978*
MS1/ML01C7	46485.714*	7874791.074*
MS2/ML01C7	464488.045*	7874811.805*
MS3/ML01C7	464490.508*	7874835.598*
MH4/ML01C7	464496.469*	7874894.150*
MH5/ML01C7	464504.453*	7874917.143*
MH1/ML01C7a	464570.602*	7874915.536*
MH2/ML01C7a	464604.127*	7874914.987*

- All dimensions are to centre of chamber.

ACCEPTED AS CONSTRUCTED

AS CONSTRUCTED

Rowlands Surveys Pty Ltd (ACN 010 025 260) hereby certify that the works detailed on this drawing, denoted *, have been constructed to the dimensions and levels shown.

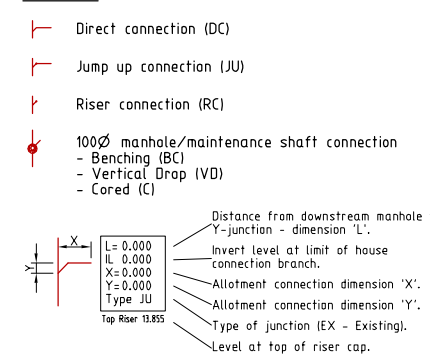
Laurence John Nolan
 Director/Registered Surveyor
 Date: 06/09/17

AS CONSTRUCTED

I, Andrew Ian Wallace of Northern Consulting Engineers hereby certify that the works as shown on the as constructed drawings reflect any changes that were made during the course of construction.

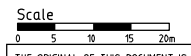
Andrew Ian Wallace (RPEQ No. 6743)
 Date: 10/09/17

SERVICES:-



REAL PROPERTY DESCRIPTION
 Lot 900 on SP289582
 Parish of BOHLE
 County of ELPHINSTONE
 Conway Street - Mount Low

LEVEL DATUM A.H.D. (Der)
 Horizontal Datum GDA' 94 Zone 55
 Refer PM 193518 RL. 8.195
 Bolt and washer in kerb
 FREMONT STREET.



THE ORIGINAL OF THIS DOCUMENT IS COMPLETED TO THE SCALE NOTED.
 AS REPRODUCTION CAN DISTORT SIZE & SHAPE USE ONLY THE DIMENSIONS PROVIDED ON ARCHITECTURAL &/OR ENGINEERING DRAWINGS.
 VERIFY DIMENSIONS ON SITE BEFORE CONSTRUCTION.

All work is carried out in accordance with LOCAL AUTHORITIES standard details.



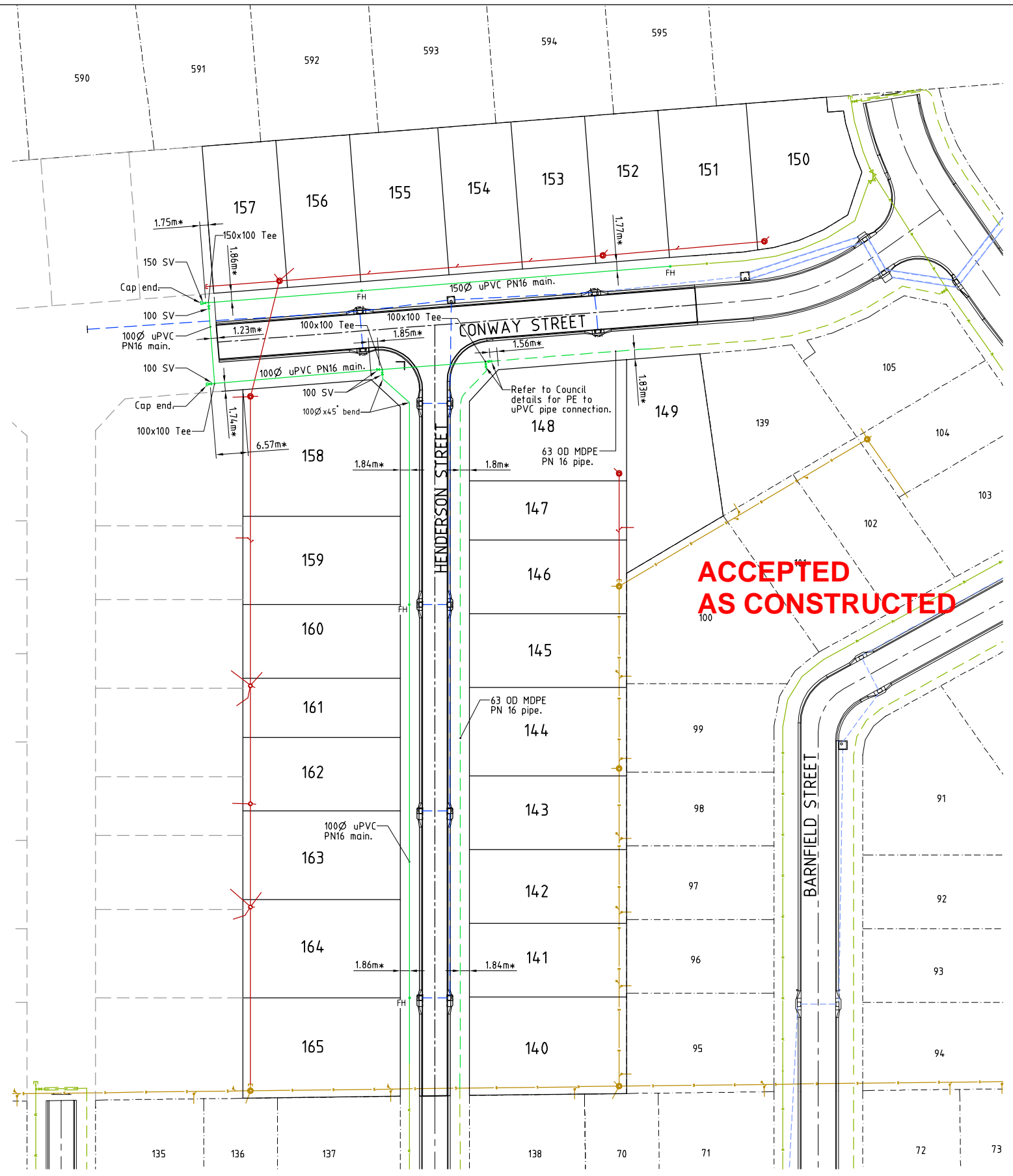
Civil & Structural Engineers
 50 Punari Street, Currajong 4812
 Phone: [07] 4725 5550 Fax: [07] 4725 5850
 Email: mail@nceng.com.au
 Milton Messer & Associates Pty. Ltd.
 ACN 110 817 399

Issue	Description	Date
B	AMENDED TO AS CONSTRUCTED.	05/09/2017
A	ISSUED FOR CONSTRUCTION.	27/03/2017
P2	PRELIMINARY - NOT FOR CONSTRUCTION - ISSUED FOR REQUEST FOR INFORMATION.	27/02/2017
P1	PRELIMINARY - NOT FOR CONSTRUCTION - ISSUED FOR OPERATIONAL WORKS APPROVAL.	14/12/2016

Drawn	In Association With	SEWERAGE RETICULATION PLAN
LJ	BUSHLAND GROVE PTY LTD	
Date	BUSHLAND GROVE ESTATE	
14/12/2016	STAGE 13, 26 ALLOTMENT	
Checked	RESIDENTIAL SUBDIVISION,	
P.A	MOUNT LOW	
Approved		
COPYRIGHT ©		

Drawing Number	Issue
TUR0813/10	B





LEGEND

- GENERAL:-**
- - - - - RP boundary.
 - - - - - Stormwater drain line.
 - - - - - Sewer main.
 - - - - - Sewer manhole.
 - - - - - uPVC water main.
 - - - - - Poly water main.
 - - - - - Stormwater drain line.
 - - - - - Sewer main.
 - - - - - Sewer manhole.
 - - - - - Water main.
 - - - - - Poly water main.

NOTES:

- AS CONSTRUCTED WATER RETICULATION:**
1. All water supply fixtures (FH, SV etc.) have been installed in accordance with Townsville City Council standards. ie. adjacent to boundary intersection, U.N.O.
 2. All uPVC water mains & fittings are Class 16, C.I.O.D. compatible unless shown otherwise.

WATER RETICULATION:-

- FH Fire Hydrant.
- SV Sluice Valve.

AS CONSTRUCTED

Rawlands Surveys Pty Ltd (ACN 010 025 260) hereby certify that the works detailed on this drawing, denoted *, have been constructed to the dimensions and levels shown.

Laurence John Nolan
 Laurence John Nolan
 Director/Registered Surveyor
 Date: 06/09/17

AS CONSTRUCTED

I, Andrew Ian Wallace of Northern Consulting Engineers hereby certify that the works as shown on the as constructed drawings reflect any changes that were made during the course of construction.

Andrew Ian Wallace
 Andrew Ian Wallace - (RPEQ No. 67431)
 Date: 10/09/17



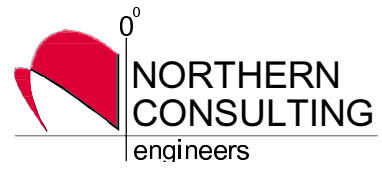
LAYOUT PLAN

All work is carried out in accordance with LOCAL AUTHORITIES standard details.

REAL PROPERTY DESCRIPTION
 Lot 900 on SP289582
 Parish of BOHLE
 County of ELPHINSTONE
 Conway Street - Mount Low

LEVEL DATUM A.H.D. (Der)
 Horizontal Datum GDA' 94 Zone 55
 Refer PM 193518 RL. 8.195
 Bolt and washer in kerb
 FREMONT STREET.

Scale
 0 5 10 15 20m
 THE ORIGINAL OF THIS DOCUMENT IS COMPLETED TO THE SCALE NOTED.
 AS REPRODUCTION CAN DISTORT SIZE & SHAPE USE ONLY THE
 DIMENSIONS PROVIDED ON ARCHITECTURAL &/OR ENGINEERING DRAWINGS.
 VERIFY DIMENSIONS ON SITE BEFORE CONSTRUCTION.



Civil & Structural Engineers
 50 Punari Street, Currajong 4812
 Phone: [07] 4725 5550 Fax: [07] 4725 5850
 Email: mail@ncoeng.com.au
 Milton Messer & Associates Pty. Ltd.
 ACN 100 817 399

B	AMENDED TO AS CONSTRUCTED.	05/09/2017
A	ISSUED FOR CONSTRUCTION.	27/03/2017
P1	PRELIMINARY - NOT FOR CONSTRUCTION - ISSUED FOR OPERATIONAL WORKS APPROVAL.	14/12/2016
Issue	Description	Date
Drawn LJ	In Association With BUSHLAND GROVE PTY LTD	
Date 14/12/2016	BUSHLAND GROVE ESTATE	
Checked P.A	STAGE 13, 26 ALLOTMENT	
Approved MS	RESIDENTIAL SUBDIVISION,	
COPYRIGHT ©	MOUNT LOW	
WATER RETICULATION PLAN		
Drawing Number TUR0813/11		Issue B