

**ACCEPTED
AS CONSTRUCTED**

PART LAYOUT PLAN

LEGEND

- 2/1 (12.000*) - Pit No. 2/Drainline No. 1
- (12.000*) - As constructed top of structure levels.
- 12.000* - As constructed top of kerb level.
- 12.000* - As constructed pipe invert levels.
- - - - - RP boundary.
- - - - - Stormwater drain line.
- - - - - Sewer main.
- - - - - Sewer manhole.
- - - - - uPVC water main.
- - - - - Poly water main.
- - - - - Water main.

NOTES:

1. All Kerb Inlet Grates are Class 'D' and 'Bicycle Safe' to AS 3996 U.N.O.

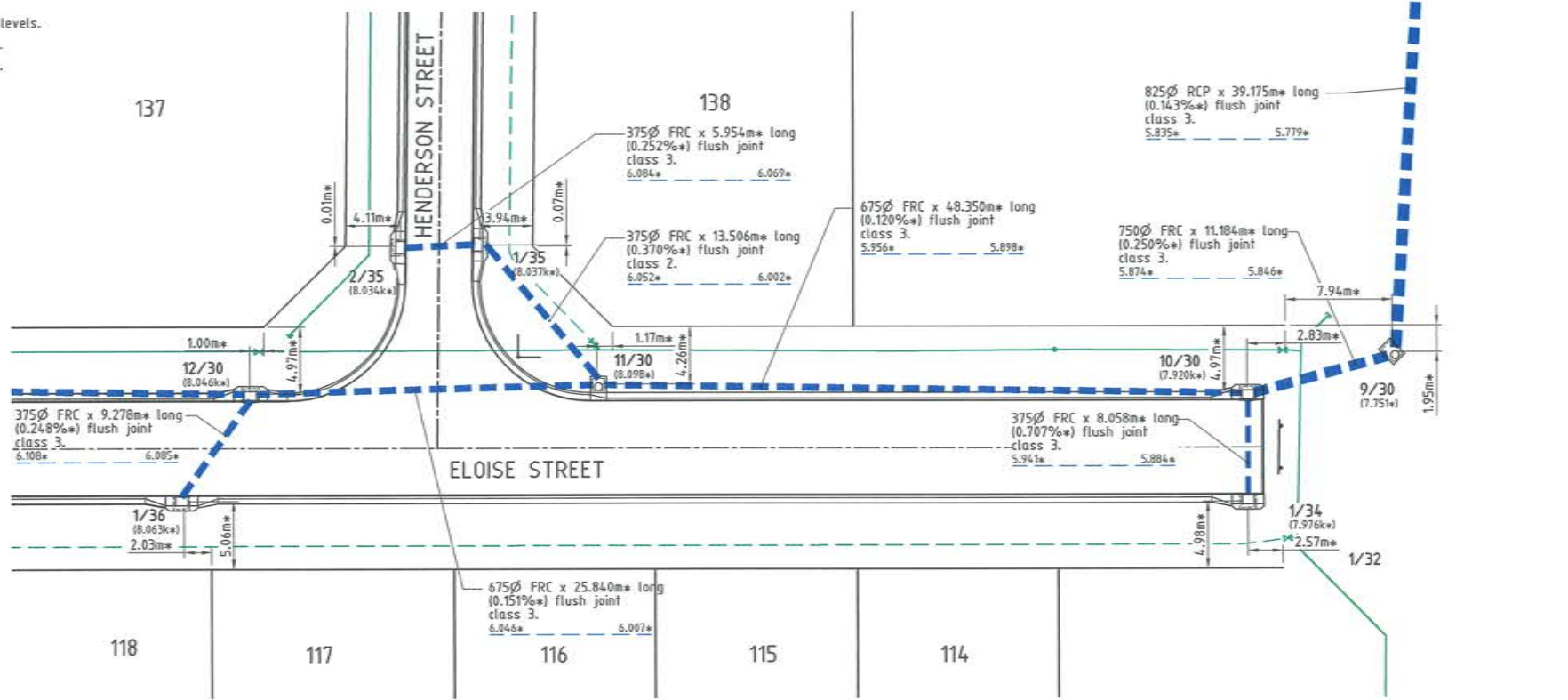
AS CONSTRUCTED
Rowlands Surveys Pty Ltd (ACN 010 025 260) hereby certify that the works detailed on this drawing, denoted *, have been constructed to the dimensions and levels shown.

Signature: *Laurence John Nolan* Date: *6/5/15*
Director/Registered Surveyor

STORMWATER STRUCTURE SETOUT TABLE

PIT No.	EASTING	NORTHING	STRUCTURE TYPE	TOP LEVEL
19/30	464355.393*	7874681.800*	Grated Kerb Inlet (2400L)	8.358*
18/30	464355.572*	7874709.668*	Grated Kerb Inlet (2400C)	8.247*
17/30	464363.491*	7874708.638*	Grated Kerb Inlet (2400C)	8.250*
16/30	464375.981*	7874718.607*	Grated Kerb Inlet (2400C)	8.162*
15/30	464376.839*	7874726.478*	Grated Kerb Inlet (2400C)	8.163*
14/30	464426.218*	7874721.965*	Grated Kerb Inlet (2400C)	8.180*
13/30	464452.199*	7874720.396*	900x900 Stormwater Manhole, Type 1	8.235*
12/30	464501.882*	7874715.216*	Grated Kerb Inlet (2400C)	8.046*
11/30	464527.679*	7874713.725*	900x900 Stormwater Manhole, Type 1	8.098*
10/30	464575.770*	7874708.730*	Grated Kerb Inlet (2400C)	7.920*
9/30	464586.770*	7874710.750*	1300x900 Stormwater Manhole	7.751*
1/38	464418.502*	7874714.787*	Grated Kerb Inlet (2400C)	8.159*
2/37	464438.281*	7874732.022*	Grated Kerb Inlet (2400C)	8.167*
1/37	464444.152*	7874731.607*	Grated Kerb Inlet (2400C)	8.174*
1/36	464496.290*	7874707.813*	Grated Kerb Inlet (2400C)	8.063*
2/35	464514.002*	7874725.257*	Grated Kerb Inlet (2400C)	8.034*
1/35	464519.938*	7874724.793*	Grated Kerb Inlet (2400C)	8.037*
1/34	464575.100*	7874708.700*	Grated Kerb Inlet (2400C)	7.978*

- All dimensions are to centre of chamber.
- All graded kerb inlets constructed over 900x900 Type 1 stormwater manhole to Council standard details U.N.O.
- Refer to drawing TUR0812/7 for 9/30 non-standard pit details.



PART LAYOUT PLAN

All work carried out in accordance with LOCAL AUTHORITIES standard details.



Civil & Structural Engineers
50 Punari Street, Currajong 4812
Phone: (07) 4725 5550 Fax: (07) 4725 5850
Email: mail@nceng.com.au
Milton Messer & Associates Pty. Ltd.
ACN 100 817 356

Issue	Description	Date
B	AMENDED TO AS CONSTRUCTED.	06/05/2015
A	AMENDED FOR CONSTRUCTION.	01/10/2014
P1	PRELIMINARY - NOT FOR CONSTRUCTION - ISSUED FOR OPERATIONAL WORKS APPROVAL.	18/12/2013

Drawn LJ Date 18/12/2013	In Association With BUSHLAND GROVE PTY LTD	STORMWATER DRAIN LINE PLAN
Checked HAB Approved [Signature]	BUSHLAND GROVE ESTATE STAGE 12, 25 ALLOTMENT RESIDENTIAL SUBDIVISION, MOUNT LOW	
Drawing Number TUR0812/12		Issue B

REAL PROPERTY DESCRIPTION
Lot 900 on SP262005
Parish of BOHLE
County of ELPHINSTONE
Conway Street - Mount Low

LEVEL DATUM A.H.D. (Der)
Horizontal Datum MGA '94 Zone 55
Refer PM 177387 RL: 8.077
Bolt and washer to kerb
GUNDBLUEY CRESSENT.

Scale
0 2.5 5 7.5 10m
THE ORIGINAL OF THIS DOCUMENT IS COMPLETED TO THE SCALE NOTED.
AS REPRODUCTION CAN DISTORT SIZE & SHAPE USE ONLY THE
DIMENSIONS PROVIDED ON ARCHITECTURAL &/OR ENGINEERING DRAWINGS.
VERIFY DIMENSIONS ON SITE BEFORE CONSTRUCTION.