

LAYOUT PLAN

LEGEND

- 2/1 - Pit No. 2/Drainline No. 1
- - Stormwater flow arrow.
- - - - - RP boundary.
- - - - - Top of batter.
- - - - - Toe of batter.
- - - - - Sewer main.
- - - - - Sewer manhole.
- - - - - uPVC water main.
- - - - - Poly water main.
- - - - - Stormwater drain line.
- - - - - Stormwater drain line.
- - - - - Subsoil drainage.
- - - - - Subsoil drainage.
- - - - - Sewer main.
- - - - - Sewer manhole.
- - - - - Water main.
- - - - - Poly water main.



REAL PROPERTY DESCRIPTION
 Lot 906 on SP262005
 Parish of BOHLE
 County of ELPHINSTONE
 Conway Street - Mount Low

LEVEL DATUM A.H.D. (Der)
 Horizontal Datum MGA' 94 Zone 55
 Refer PM 177367 RL 8.077
 Bolt and washer in kerb
 GUNDBLUEY CRESENT.

Scale
 0 5 10 15 20m
 THE ORIGINAL OF THIS DOCUMENT IS COMPLETED TO THE SCALE NOTED.
 AS REPRODUCTION CAN DISTORT SIZE & SHAPE USE ONLY THE
 DIMENSIONS PROVIDED ON ARCHITECTURAL &/OR ENGINEERING DRAWINGS.
 VERIFY DIMENSIONS ON SITE BEFORE CONSTRUCTION.

All work carried out in accordance with LOCAL AUTHORITIES standard details.

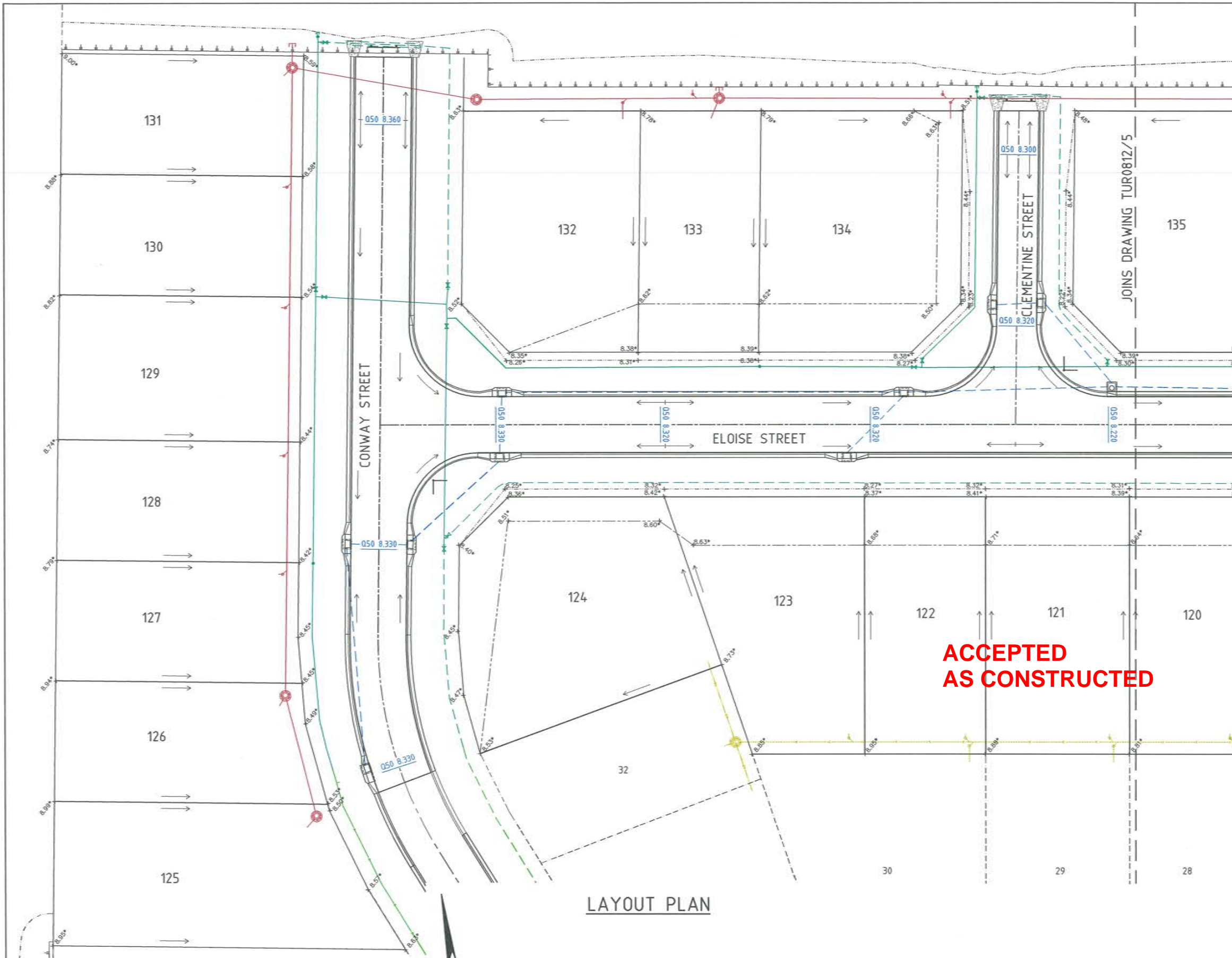


Civil & Structural Engineers
 50 Punari Street, Currajong 4812
 Phone: [07] 4725 5550 Fax: [07] 4725 5850
 Email: mail@nceng.com.au
 Milton Messer & Associates Pty. Ltd.
 ACN 100 817 356

REFER TO DRAWING TUR0812/7 FOR ROAD TYPICAL SECTIONS.

B	AMENDED TO AS CONSTRUCTED.	06/05/2015
A	AMENDED FOR CONSTRUCTION.	01/10/2014
P1	PRELIMINARY - NOT FOR CONSTRUCTION - ISSUED FOR OPERATIONAL WORKS APPROVAL.	18/12/2013
Issue	Description	Date
Drawn LJ Date 18/12/2013	In Association With BUSHLAND GROVE PTY LTD	LAYOUT PLAN, ROADWORKS & STORMWATER
Checked HAB Approved	BUSHLAND GROVE ESTATE STAGE 12, 25 ALLOTMENT RESIDENTIAL SUBDIVISION, MOUNT LOW	
Drawing Number TUR0812/3		Issue B

AS CONSTRUCTED
 Northern Consulting Engineers hereby certify that the works detailed on this drawing have been constructed to the dimensions and levels detailed.
Andrew Ian Wallace Date: 7/5/15



- LEGEND**
- As constructed surface levels.
 - Q50 12.00
 - Stormwater flow arrow.
 - RP boundary.
 - Top of batter.
 - Toe of batter.
 - Sewer main.
 - Sewer manhole.
 - uPVC water main.
 - Poly water main.
 - Stormwater drain line.
 - Sewer main.
 - Sewer manhole.
 - Water main.
 - Poly water main.

NOTES:

- All fill material placed, compacted & tested in accordance with AS 3798 'Guidelines on Earthworks for Commercial & Residential Developments'.

ACCEPTED AS CONSTRUCTED

AS CONSTRUCTED
 Rowlands Surveys Pty Ltd (ACN 010 025 260) hereby certify that the works detailed on this drawing, denoted *, have been constructed to the dimensions and levels shown.

Laurence John Nolan
 Director/Registered Surveyor
 Date: 6/5/15

REAL PROPERTY DESCRIPTION
 Lot 900 on SP262005
 Parish of BOHLE
 County of ELPHINSTONE
 Conway Street - Mount Low

LEVEL DATUM A.H.D. (Derf)
 Horizontal Datum MGA 94 Zone 55
 Refer: PM 177367 RL: 8.077
 Bolt and washer in kerb
 GUNDBLUEY CRESENT.

Scale
 0 2.5 5 7.5 10m

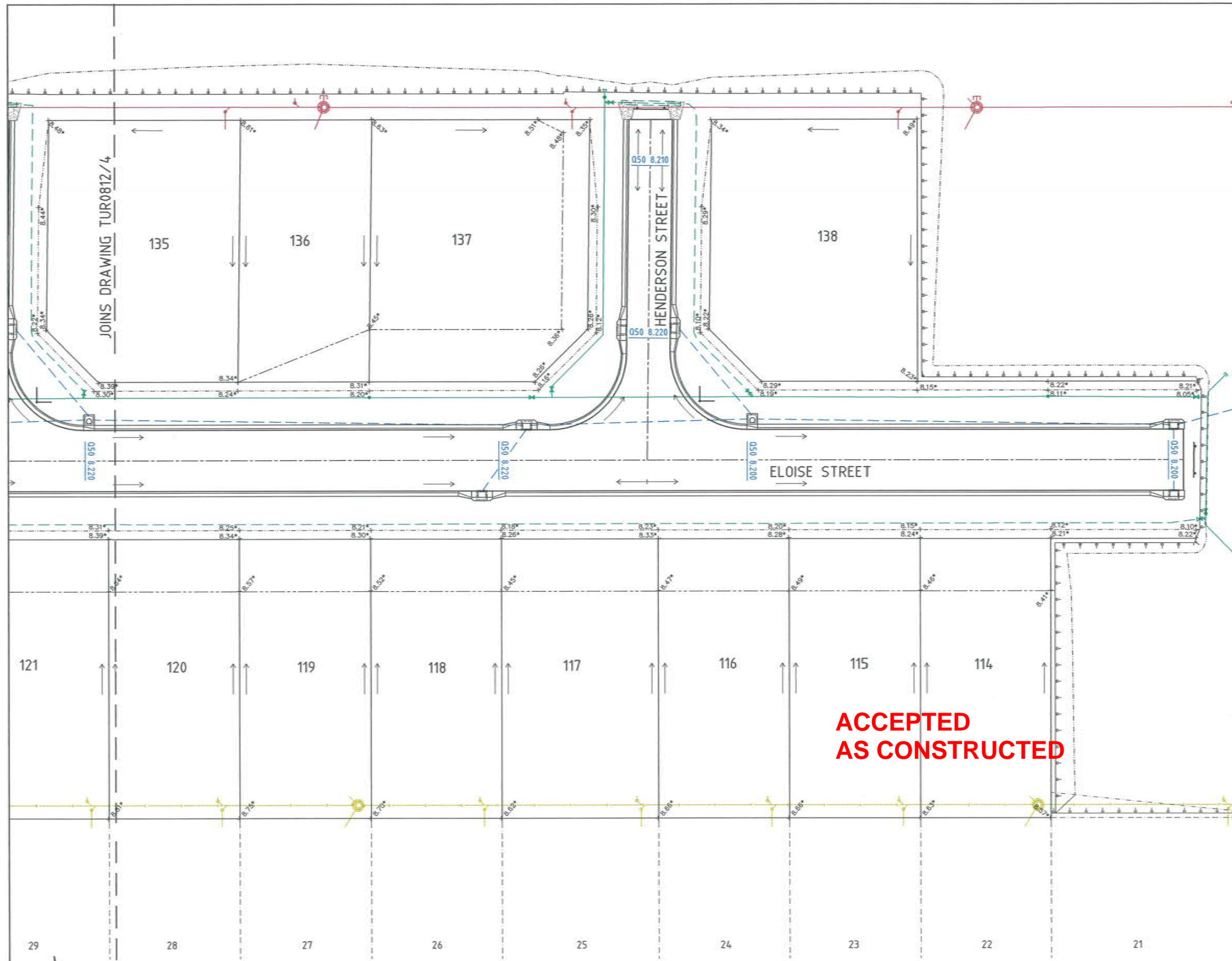
THE ORIGINAL OF THIS DOCUMENT IS COMPLETED TO THE SCALE NOTED. AS REPRODUCTION CAN DISTORT SIZE & SHAPE USE ONLY THE DIMENSIONS PROVIDED ON ARCHITECTURAL &/OR ENGINEERING DRAWINGS. VERIFY DIMENSIONS ON SITE BEFORE CONSTRUCTION.

All work carried out in accordance with LOCAL AUTHORITIES standard details.



Civil & Structural Engineers
 50 Punari Street, Currajong 4812
 Phone: [07] 4725 5550 Fax: [07] 4725 5850
 Email: mail@nceng.com.au
 Milton Messer & Associates Pty. Ltd.
 ACN 100 817 358

B	AMENDED TO AS CONSTRUCTED.	06/05/2015
A	AMENDED FOR CONSTRUCTION.	01/10/2014
P1	PRELIMINARY - NOT FOR CONSTRUCTION - ISSUED FOR OPERATIONAL WORKS APPROVAL.	18/12/2013
Issue	Description	Date
Drawn LJ	In Association With BUSHLAND GROVE PTY LTD	
Date 18/12/2013		
Checked HJB	BUSHLAND GROVE ESTATE	
Approved [Signature]	STAGE 12, 25 ALLOTMENT	
	RESIDENTIAL SUBDIVISION,	
	MOUNT LOW	
Drawing Number TUR0812/4		Issue B



LEGEND

- As constructed surface levels.
- Q50 water surface levels.
- Stormwater flow arrow.
- RP boundary.
- Top of batter.
- Toe of batter.
- Sewer main.
- Sewer manhole.
- uPVC water main.
- Poly water main.
- Stormwater drain line.
- Stormwater drain line.
- Sewer main.
- Sewer manhole.
- Water main.
- Poly water main.

NOTES:

1. All fill material placed, compacted & tested in accordance with AS 3798 'Guidelines on Earthworks for Commercial & Residential Developments'.

LAYOUT PLAN

ACCEPTED AS CONSTRUCTED

AS CONSTRUCTED

Rowlands Surveys Pty Ltd (ACN 010 025 260) hereby certify that the works detailed on this drawing, denoted *, have been constructed to the dimensions and levels shown.

Laurence John Nolan
Director/Registered Surveyor
Date: 6/5/15

REAL PROPERTY DESCRIPTION
Lot 900 on SP262005
Parish of BOHLE
County of ELPHINSTONE
Conway Street - Mount Low

LEVEL DATUM A.H.D. (Der)
Horizontal Datum MGA '94 Zone 55
Refer FM 177367 RL: 8.077
Bolt and washer in kerb
GUNDABLUY CRESENT.



THE ORIGINAL OF THIS DOCUMENT IS COMPLETED TO THE SCALE NOTED. AS REPRODUCTION CAN DISTORT SIZE & SHAPE USE ONLY THE DIMENSIONS PROVIDED ON ARCHITECTURAL &/OR ENGINEERING DRAWINGS. VERIFY DIMENSIONS ON SITE BEFORE CONSTRUCTION.

All work carried out in accordance with LOCAL AUTHORITIES standard details.



Civil & Structural Engineers
50 Punari Street, Currajong 4812
Phone: [07] 4725 5550 Fax: [07] 4725 5850
Email: mail@nceng.com.au
Milton Messer & Associates Pty. Ltd.
ACN 100 817 358

B	AMENDED TO AS CONSTRUCTED.	06/05/2015
A	AMENDED FOR CONSTRUCTION.	01/10/2014
P1	PRELIMINARY - NOT FOR CONSTRUCTION - ISSUED FOR OPERATIONAL WORKS APPROVAL.	18/12/2013
Issue	Description	Date
Drawn LJ	In Association With BUSHLAND GROVE PTY LTD	
Date 18/12/2013		
Checked HAB	BUSHLAND GROVE ESTATE	
Approved [Signature]	STAGE 12, 25 ALLOTMENT	
	RESIDENTIAL SUBDIVISION,	
	MOUNT LOW	
Drawing Number TUR0812/5		Issue B

PAVEMENT TABLE	
PAVEMENT TYPE	PAVEMENT DESCRIPTION
Type 1	30mm DG10 Asphalt. Prime 100mm base course, DTMR Type 2.1 cement modified (max UCS=1MPa). 120mm sub-base course, DTMR Type 2.3 cement modified (max UCS=1MPa). 250mm insitu lime stabilised subgrade (3.1% quicklime, spread rate 14kg/m ²)
Type 2	30mm DG10 Asphalt. Prime 135mm base course, DTMR Type 2.1 cement modified (max UCS=1MPa). 130mm sub-base course, DTMR Type 2.3 cement modified (max UCS=1MPa). 250mm insitu lime stabilised subgrade (3.1% quicklime, spread rate 14kg/m ²)

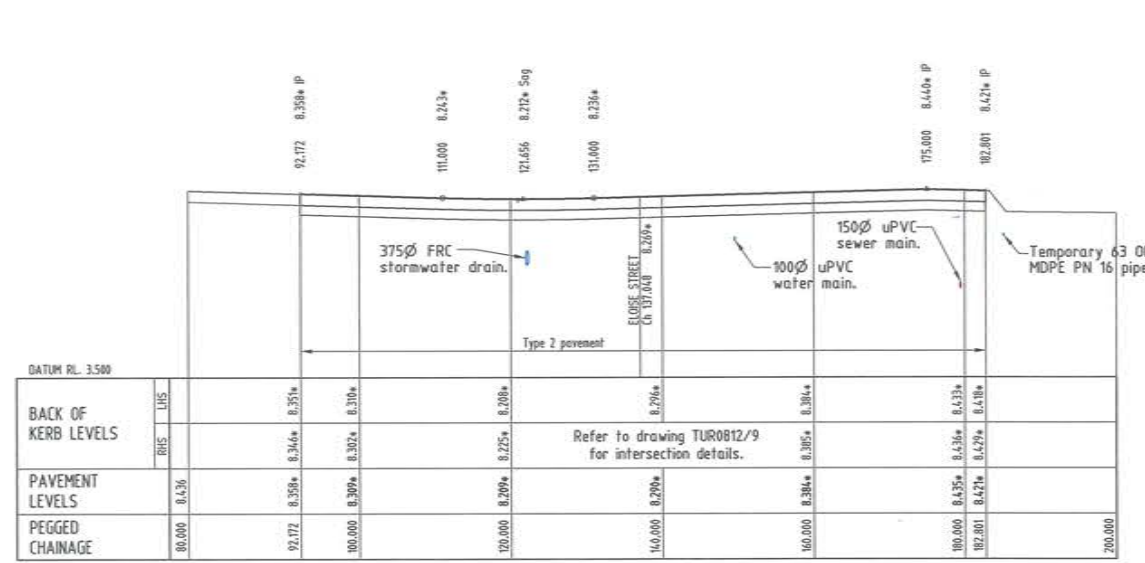


ACCEPTED AS CONSTRUCTED

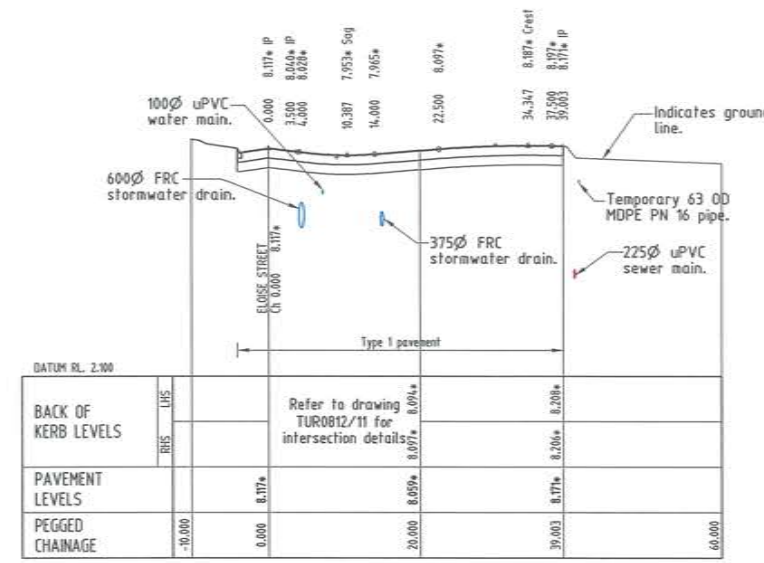
AS CONSTRUCTED
Rowlands Surveys Pty Ltd (ACN 010 025 260) hereby certify that the works detailed on this drawing denoted *, have been constructed to the dimensions and levels shown.
Date: 6/5/15
Laurence John Nolan
Director/Registered Surveyor

AS CONSTRUCTED
Northern Consulting Engineers hereby certify that the works detailed on this drawing have been constructed to the dimensions and levels detailed.
Date: 7/5/15
Andrew Ian Wallace

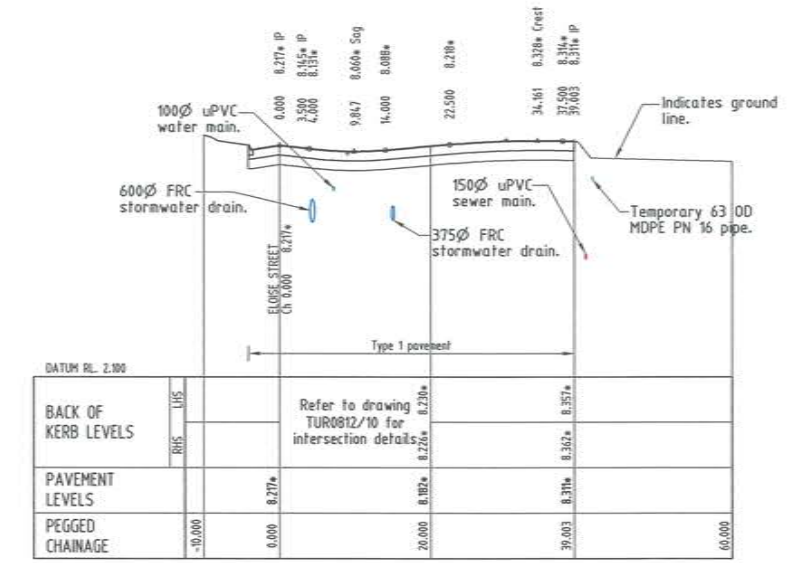
ELOISE STREET
(Regulatory Speed Zone 50 km/h)



CONWAY STREET
(Regulatory Speed Zone 50 km/h)



HENDERSON STREET
(Regulatory Speed Zone 50 km/h)



CLEMENTINE STREET
(Regulatory Speed Zone 50 km/h)

LONGITUDINAL SECTIONS

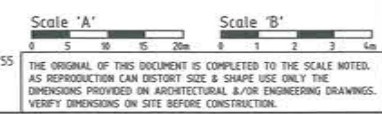
Scale 'A' - Horizontal
Scale 'B' - Vertical

All work carried out in accordance with LOCAL AUTHORITIES standard details.

REFER TO DRAWING TUR0812/7 FOR ROAD TYPICAL SECTIONS.

REAL PROPERTY DESCRIPTION
Lot 900 on SP262005
Parish of BOHLE
County of ELPHINSTONE
Conway Street - Mount Low

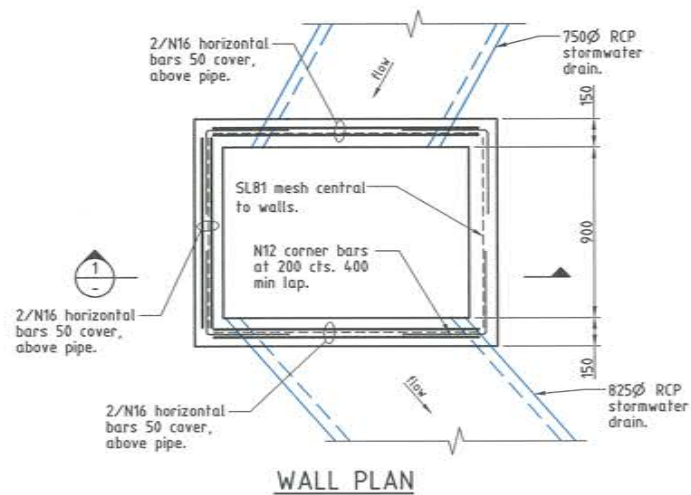
LEVEL DATUM A.H.D. (Der)
Horizontal Datum MGA '94 Zone 55
Refer PM 177367 RL: 8.077
Soll and washer in kerb
GUNDABLUY CRESSENT.



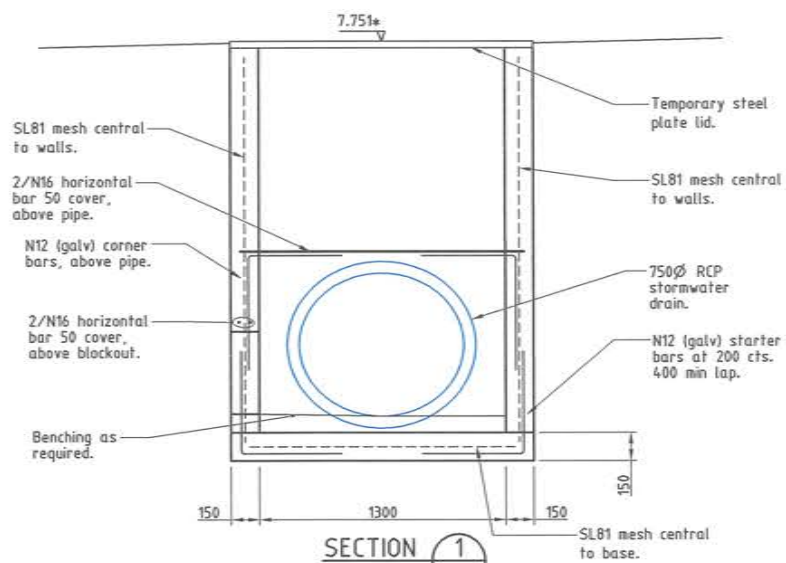
Civil & Structural Engineers
50 Punari Street, Currajong 4812
Phone: [07] 4725 5550 Fax: [07] 4725 5850
Email: mail@nceng.com.au
Milton Messer & Associates Pty. Ltd.
ACN 100 817 358

Issue	Description	Date
B	AMENDED TO AS CONSTRUCTED.	06/05/2015
A	AMENDED FOR CONSTRUCTION.	01/10/2014
P2	PRELIMINARY - NOT FOR CONSTRUCTION - AMENDED TO COUNCIL'S REQUIREMENTS.	14/05/2014
P1	PRELIMINARY - NOT FOR CONSTRUCTION - ISSUED FOR OPERATIONAL WORKS APPROVAL.	18/12/2013

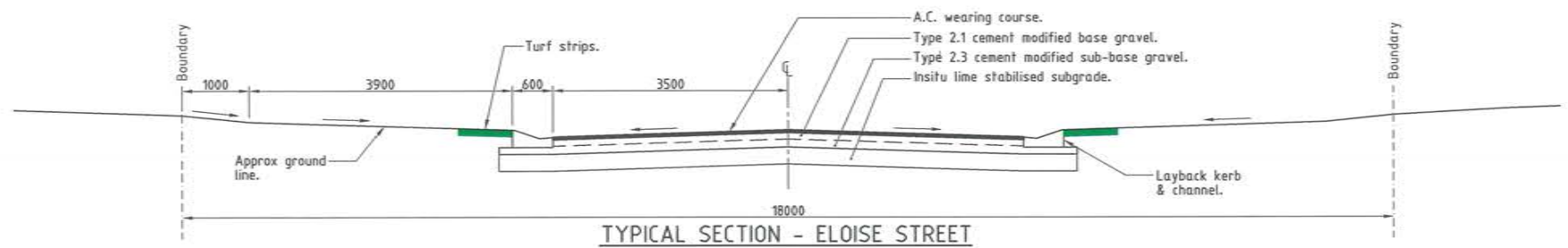
Drawn LJ	In Association With BUSHLAND GROVE PTY LTD	ROAD LONGITUDINAL SECTIONS
Date 18/12/2013		
Checked HAB	BUSHLAND GROVE ESTATE STAGE 12, 25 ALLOTMENT RESIDENTIAL SUBDIVISION, MOUNT LOW	Drawing Number TUR0812/6
Approved [Signature]		Issue B



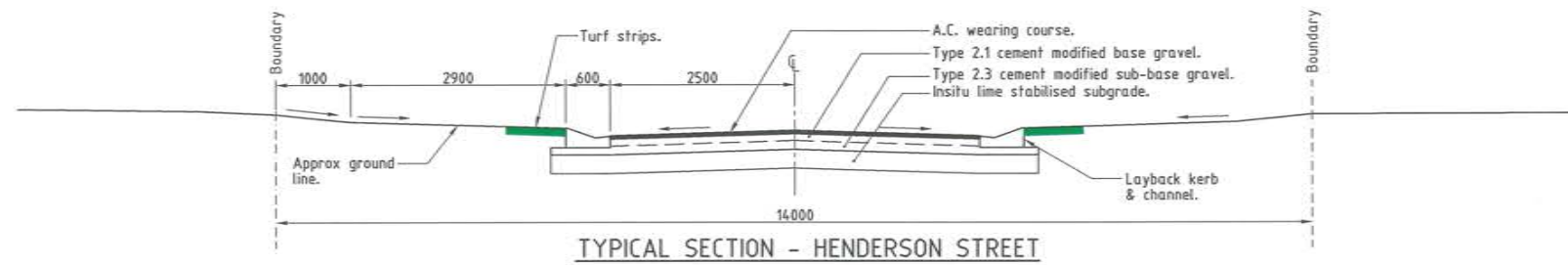
WALL PLAN



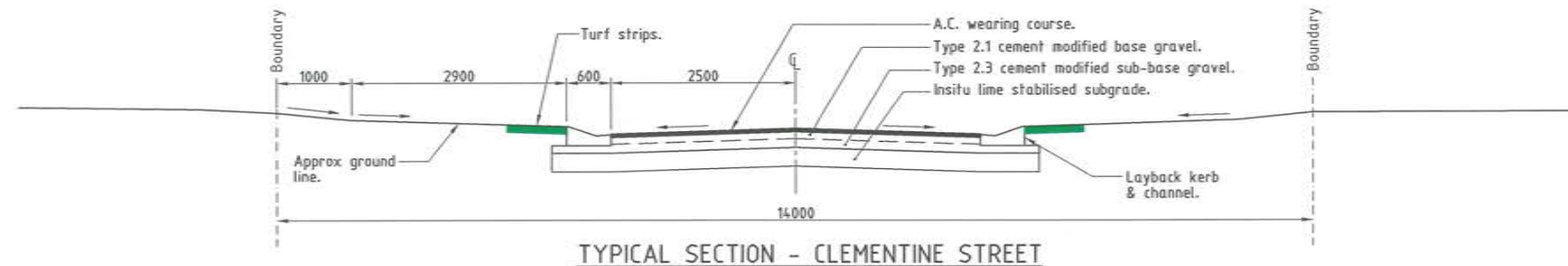
SECTION 1
NON-STANDARD CHAMBER - 9/30



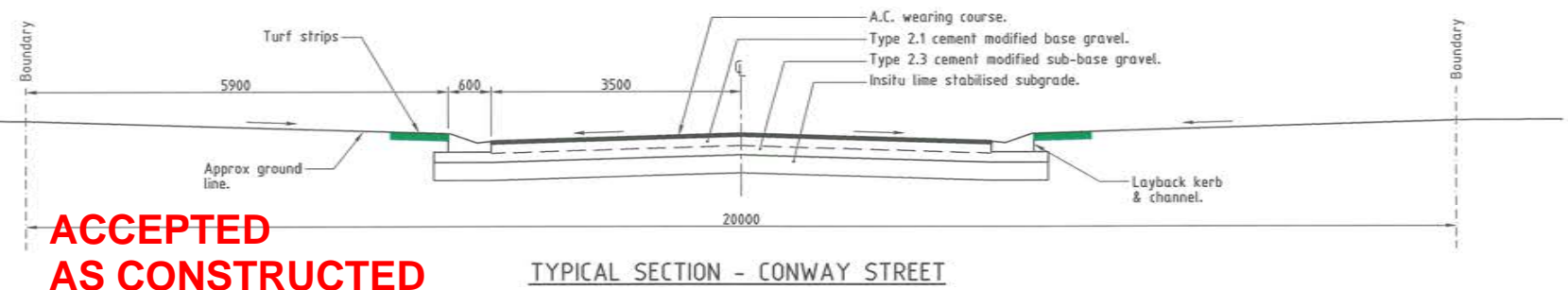
TYPICAL SECTION - ELOISE STREET



TYPICAL SECTION - HENDERSON STREET



TYPICAL SECTION - CLEMENTINE STREET



TYPICAL SECTION - CONWAY STREET

**ACCEPTED
AS CONSTRUCTED**

AS CONSTRUCTED
Northern Consulting Engineers hereby certify that the works detailed on this drawing have been constructed to the dimensions and levels detailed.

Andrew Ian Wallace Date: 7/5/15
Andrew Ian Wallace

REAL PROPERTY DESCRIPTION
Lot 900 on SP262005
Parish of BOHLE
County of ELPHINSTONE
Conway Street - Mount Low

LEVEL DATUM A.H.D. (Der)
Horizontal Datum MGA' 94 Zone 55
Refer PH 177367 RL: 8.077
Bolt and washer in kerb
GUNDABLUY CRESENT.



THE ORIGINAL OF THIS DOCUMENT IS COMPLETED TO THE SCALE NOTED.
AS REPRODUCTION CAN DISTORT SIZE & SHAPE USE ONLY THE
DIMENSIONS PROVIDED ON ARCHITECTURAL &/OR ENGINEERING DRAWINGS.
VERIFY DIMENSIONS ON SITE BEFORE CONSTRUCTION.

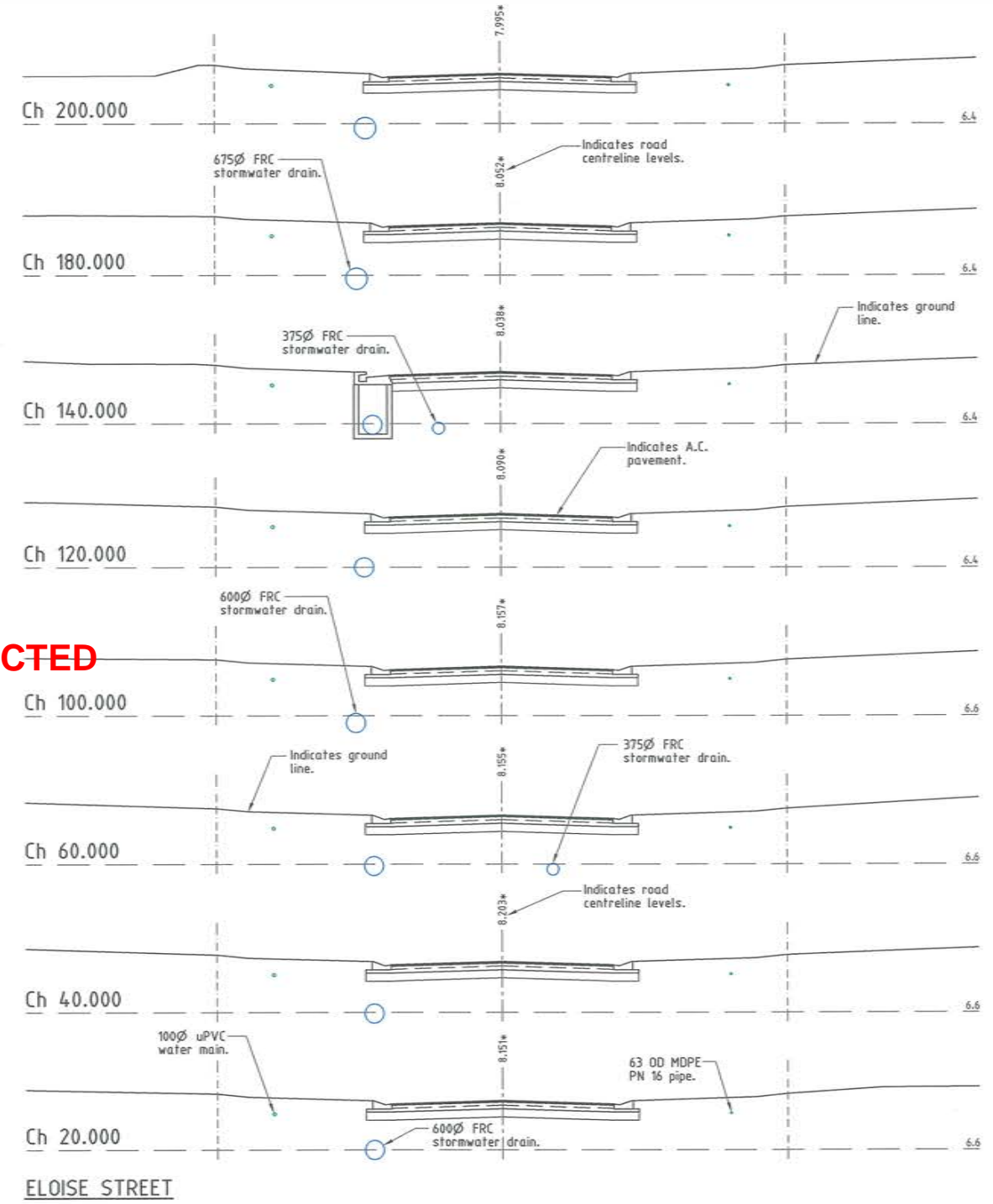
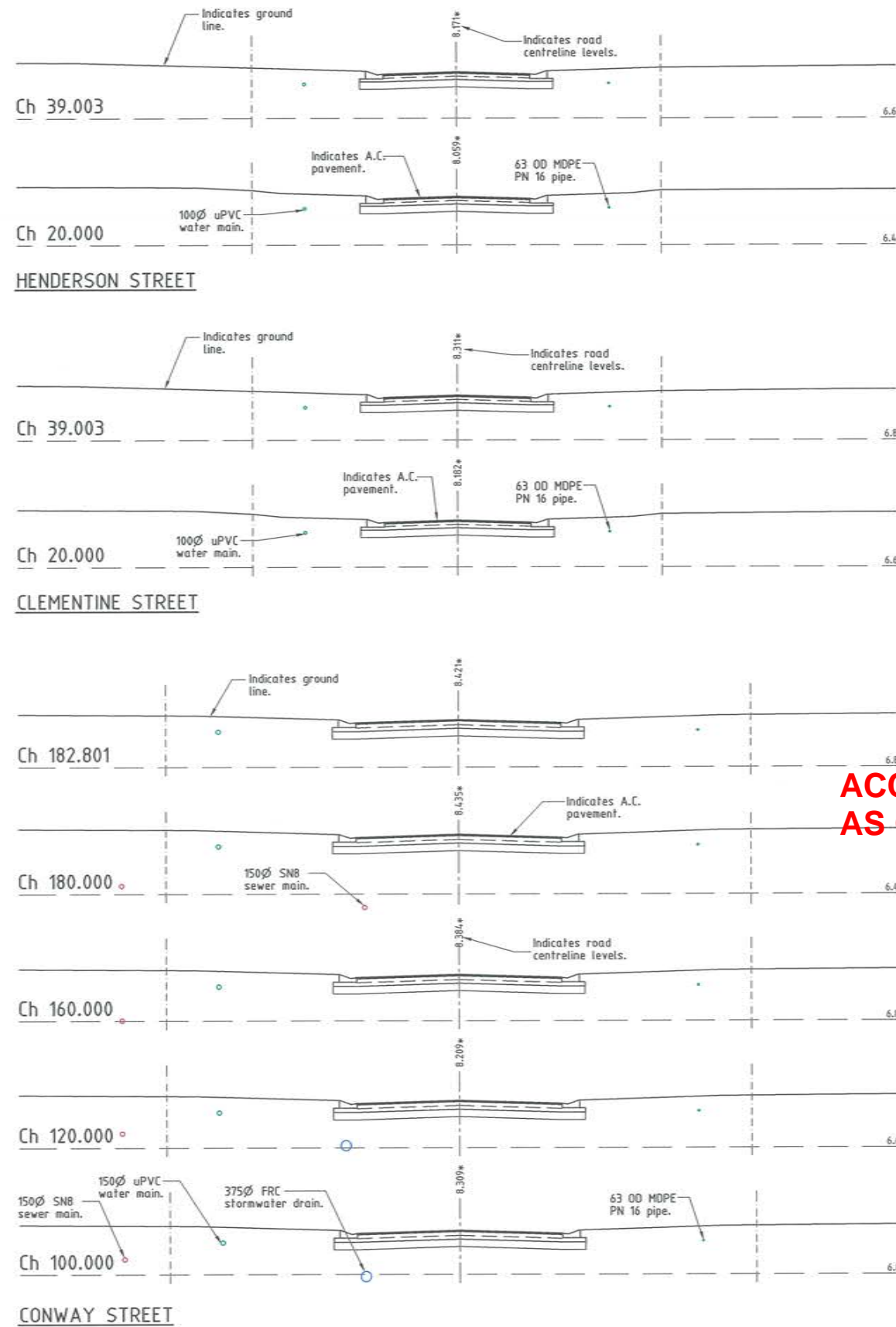
All work carried out in accordance with
LOCAL AUTHORITIES standard details.



Civil & Structural Engineers
50 Punari Street, Currajong 4812
Phone: [07] 4725 5550 Fax: [07] 4725 5850
Email: mail@nceng.com.au
Milton Messer & Associates Pty. Ltd.
ACN 100 817 358

Issue	Description	Date
B	AMENDED TO AS CONSTRUCTED.	06/05/2015
A	AMENDED FOR CONSTRUCTION.	01/10/2014
P2	PRELIMINARY - NOT FOR CONSTRUCTION - AMENDED TO COUNCIL'S REQUIREMENTS.	14/05/2014
P1	PRELIMINARY - NOT FOR CONSTRUCTION - ISSUED FOR OPERATIONAL WORKS APPROVAL.	18/12/2013

Drawn LJ Date 18/12/2013	In Association With BUSHLAND GROVE PTY LTD	ROAD TYPICAL SECTIONS
Checked <i>HAB</i> Approved <i>MS</i>	BUSHLAND GROVE ESTATE STAGE 12, 25 ALLOTMENT RESIDENTIAL SUBDIVISION, MOUNT LOW	
COPYRIGHT ©		Drawing Number TUR0812/7
		Issue B



**ACCEPTED
AS CONSTRUCTED**

AS CONSTRUCTED

Rowlands Surveys Pty Ltd (ACN 010 025 260) hereby certify that the works detailed on this drawing, denoted *, have been constructed to the dimensions and levels shown.

Signature: *Laurence John Nolan*
Date: 6/5/15
Laurence John Nolan
Director/Registered Surveyor

CROSS SECTIONS

All work carried out in accordance with LOCAL AUTHORITIES standard details.

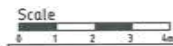
REFER TO DRAWING TUR0812/7 FOR ROAD TYPICAL SECTIONS.



Civil & Structural Engineers
50 Punari Street, Currajong 4812
Phone: [07] 4725 5550 Fax: [07] 4725 5850
Email: mail@nceng.com.au
Milton Messer & Associates Pty. Ltd.
ACN 100 817 358

REAL PROPERTY DESCRIPTION
Lot 900 on SP262005
Parish of BOHLE
County of ELPHINSTONE
Conway Street - Mount Low

LEVEL DATUM A.H.D. (Derl)
Horizontal Datum MGA' 94 Zone 55
Refer: PH 177367 RL: 8.077
Ball and washer in kerb
GUNDABLUY CRESSENT.



THE ORIGINAL OF THIS DOCUMENT IS COMPLETED TO THE SCALE NOTED. AS REPRODUCTION CAN DISTORT SIZE & SHAPE USE ONLY THE DIMENSIONS PROVIDED ON ARCHITECTURAL &/OR ENGINEERING DRAWINGS. VERIFY DIMENSIONS ON SITE BEFORE CONSTRUCTION.

Issue	Description	Date
B	AMENDED TO AS CONSTRUCTED.	06/05/2015
A	AMENDED FOR CONSTRUCTION.	01/10/2014
P2	PRELIMINARY - NOT FOR CONSTRUCTION - AMENDED TO COUNCIL'S REQUIREMENTS.	14/05/2014
P1	PRELIMINARY - NOT FOR CONSTRUCTION - ISSUED FOR OPERATIONAL WORKS APPROVAL.	18/12/2013

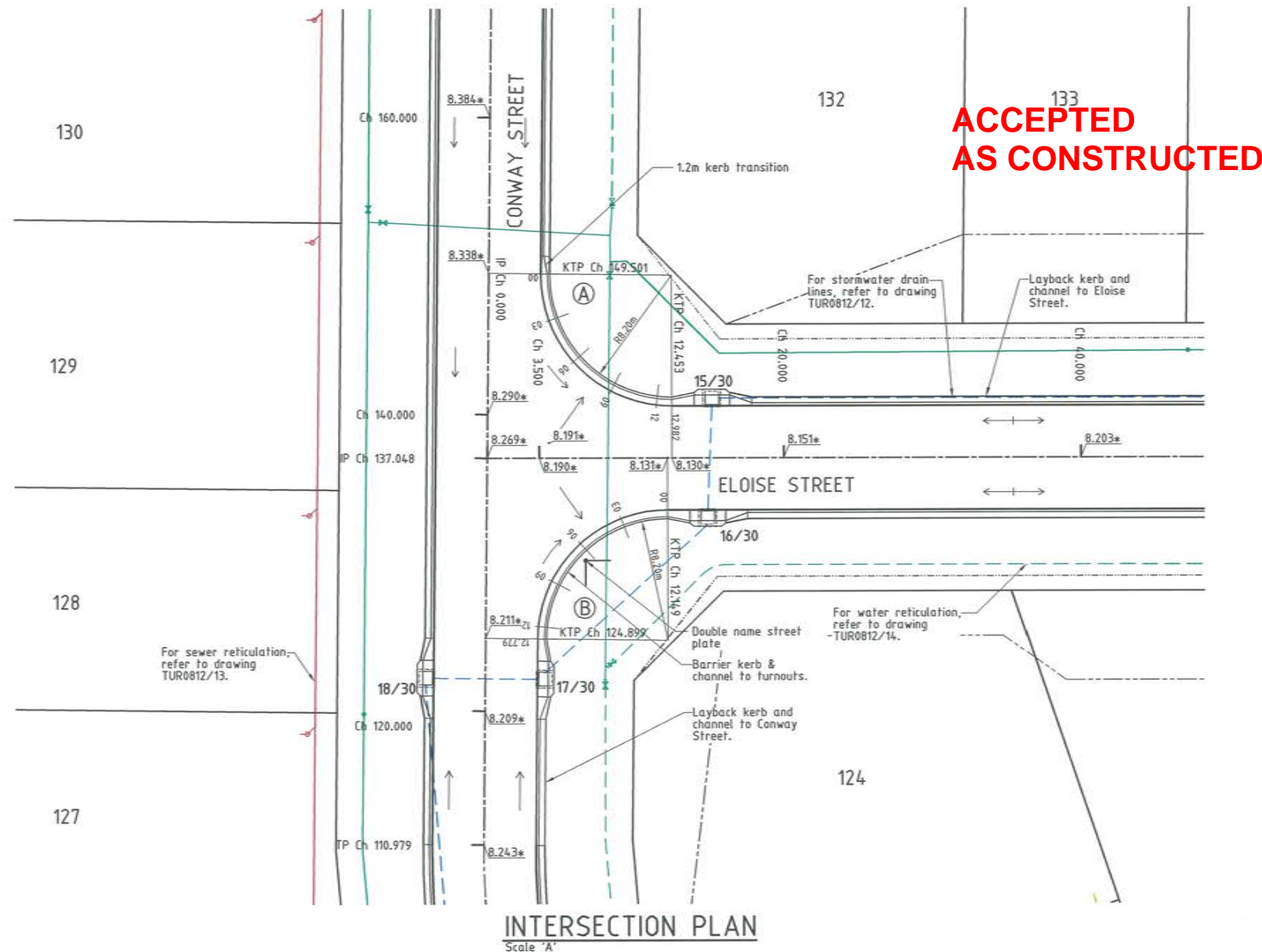
Drawn LJ Date 18/12/2013	In Association With BUSHLAND GROVE PTY LTD	ROAD CROSS SECTIONS
Checked HAB	BUSHLAND GROVE ESTATE STAGE 12, 25 ALLOTMENT RESIDENTIAL SUBDIVISION, MOUNT LOW	
Approved [Signature]		Drawing Number TUR0812/8
COPYRIGHT ©		Issue B

LEGEND

- As constructed surface level.
- Stormwater flow arrow.
- RP boundary.
- Toe of batter.
- uPVC water main.
- Poly water main.
- Stormwater drain line.
- Sewer main.

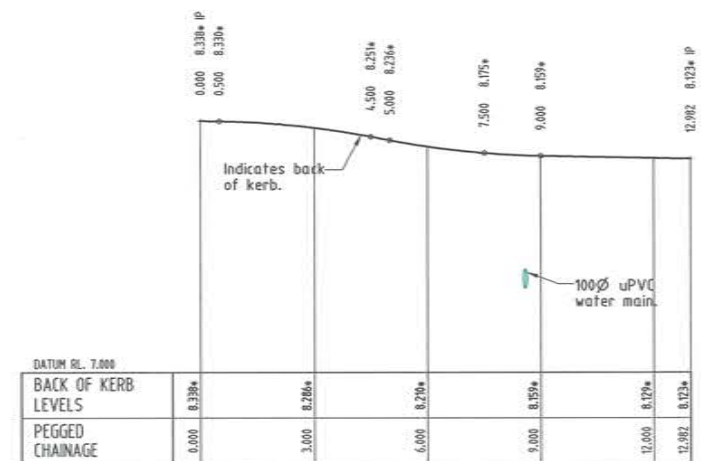
NOTES:

1. All linemarking and signage is installed in accordance with the M.U.T.C.D.

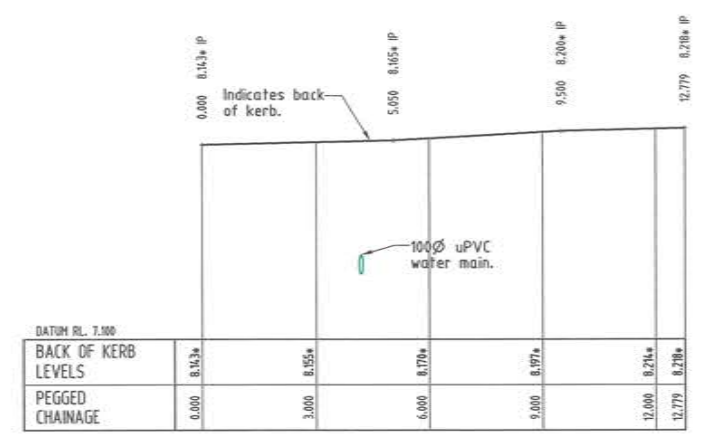


INTERSECTION PLAN
Scale 'A'

**ACCEPTED
AS CONSTRUCTED**



TURNOUT A
Scale 'B' - Horizontal
Scale 'C' - Vertical



TURNOUT B
Scale 'B' - Horizontal
Scale 'C' - Vertical

AS CONSTRUCTED
Rowlands Surveys Pty Ltd (ACN 010 025 260) hereby certify that the works detailed on this drawing denoted *, have been constructed to the dimensions and levels shown.

Laurence John Nolan
Director/Registered Surveyor
Date: 01/15/15

All work carried out in accordance with LOCAL AUTHORITIES standard details.

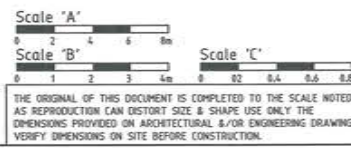


Civil & Structural Engineers
50 Punari Street, Currajong 4812
Phone: [07] 4725 5550 Fax: [07] 4725 5850
Email: mail@nceng.com.au
Milton Messer & Associates Pty. Ltd.
ACN 100 817 356

B	AMENDED TO AS CONSTRUCTED.	06/05/2015
A	AMENDED FOR CONSTRUCTION.	01/10/2014
P1	PRELIMINARY - NOT FOR CONSTRUCTION - ISSUED FOR OPERATIONAL WORKS APPROVAL.	18/12/2013
Issue	Description	Date
Drawn LJ	In Association With BUSHLAND GROVE PTY LTD	
Date 18/12/2013		
Checked HAB	BUSHLAND GROVE ESTATE STAGE 12, 25 ALLOTMENT RESIDENTIAL SUBDIVISION, MOUNT LOW	
Approved		
COPYRIGHT ©		
INTERSECTION PLAN 1		
Drawing Number TUR0812/9		Issue B

REAL PROPERTY DESCRIPTION
Lot 900 on SP262005
Parish of BOHLE
County of ELPHINSTONE
Conway Street - Mount Low

LEVEL DATUM A.H.D. (Der)
Horizontal Datum MGA '94 Zone 55
Refer PH 177367 RL - 8.077
Bolt and washer in kerb
GUNDABLUY CRESNT.

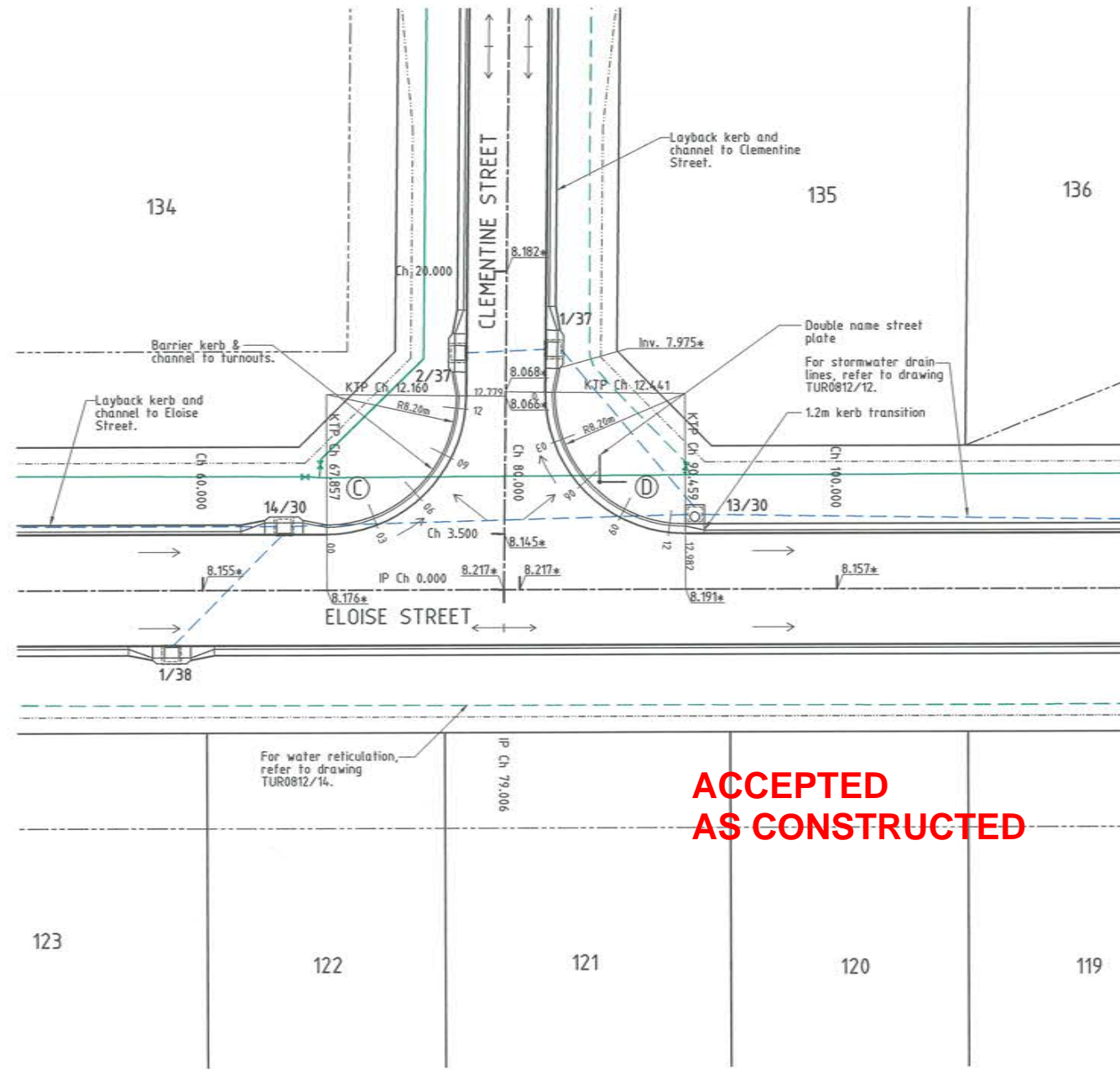


LEGEND

- 12.000* - As constructed surface level.
- - Stormwater flow arrow.
- - - - - RP boundary.
- - - - - Toe of batter.
- - - - - uPVC water main.
- - - - - Poly water main.
- - - - - Stormwater drain line.

NOTES:

1. All linemarking and signage is installed in accordance with the M.U.T.C.D.



INTERSECTION PLAN
Scale 'A'

ACCEPTED AS CONSTRUCTED

AS CONSTRUCTED
Rowlands Surveys Pty Ltd (ACN 010 025 260) hereby certify that the works detailed on this drawing, denoted *, have been constructed to the dimensions and levels shown.

Laurence John Nolan
Director/Registered Surveyor
Date: 6/5/15

DATUM RL 7.00

BACK OF KERB LEVELS	0.00	0.175*	3.00	0.15*	6.00	0.10*	9.00	0.10*	12.00	0.07*	12.77	0.09*
PEGGED CHAINAGE	0.00	3.00	6.00	9.00	12.00	12.77						

TURNOUT C
Scale 'B' - Horizontal
Scale 'C' - Vertical

DATUM RL 7.00

BACK OF KERB LEVELS	0.00	0.12*	3.00	0.13*	6.00	0.15*	9.00	0.17*	12.00	0.20*	12.92	0.21*
PEGGED CHAINAGE	0.00	3.00	6.00	9.00	12.00	12.92						

TURNOUT D
Scale 'B' - Horizontal
Scale 'C' - Vertical

REAL PROPERTY DESCRIPTION
Lot 900 on SP262005
Parish of BOHLE
County of ELPHINSTONE
Conway Street - Mount Low

LEVEL DATUM A.H.D. (Derl)
Horizontal Datum MGA '94 Zone 55
Refer PH 177367 RL: 8.077
Ball and washer in kerb
GUNDABLUY CRESSENT.

Scale 'A'
Scale 'B'
Scale 'C'

THE ORIGINAL OF THIS DOCUMENT IS COMPLETED TO THE SCALE NOTED. AS REPRODUCTION CAN DISTORT SIZE & SHAPE USE ONLY THE DIMENSIONS PROVIDED ON ARCHITECTURAL &/OR ENGINEERING DRAWINGS. VERIFY DIMENSIONS ON SITE BEFORE CONSTRUCTION.

All work carried out in accordance with LOCAL AUTHORITIES standard details.



Civil & Structural Engineers
50 Punari Street, Currajong 4812
Phone: [07] 4725 5550 Fax: [07] 4725 5850
Email: mail@nceng.com.au
Milton Messer & Associates Pty. Ltd.
ACN 100 817 358

B	AMENDED TO AS CONSTRUCTED.	06/05/2015
A	AMENDED FOR CONSTRUCTION.	01/10/2014
P1	PRELIMINARY - NOT FOR CONSTRUCTION - ISSUED FOR OPERATIONAL WORKS APPROVAL.	18/12/2013
Issue	Description	Date
Drawn LJ	In Association With BUSHLAND GROVE PTY LTD	
Date 18/12/2013		
Checked HNS	BUSHLAND GROVE ESTATE STAGE 12, 25 ALLOTMENT RESIDENTIAL SUBDIVISION, MOUNT LOW	
Approved		
INTERSECTION PLAN 2		
Drawing Number TUR0812/10		Issue B

