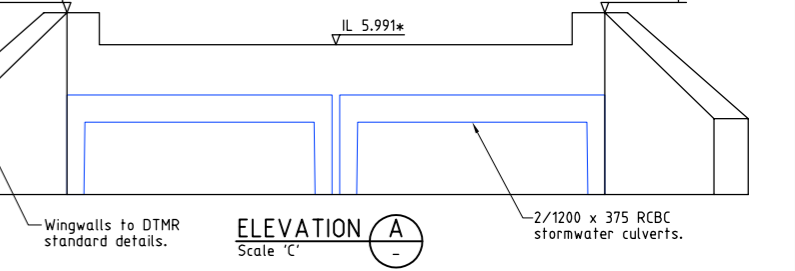
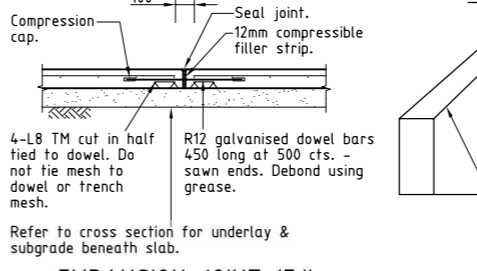
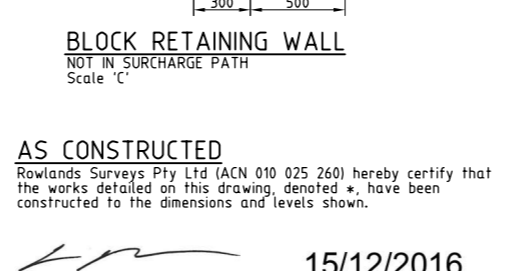
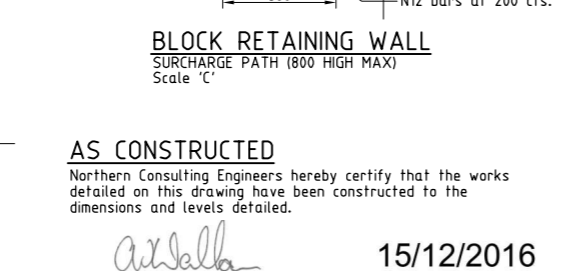
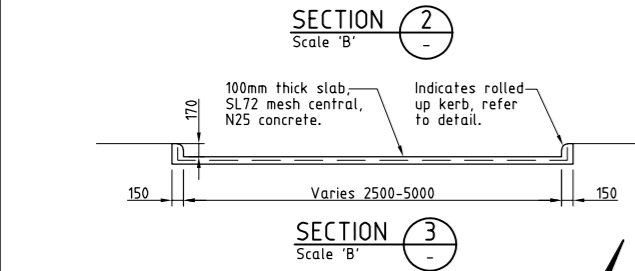
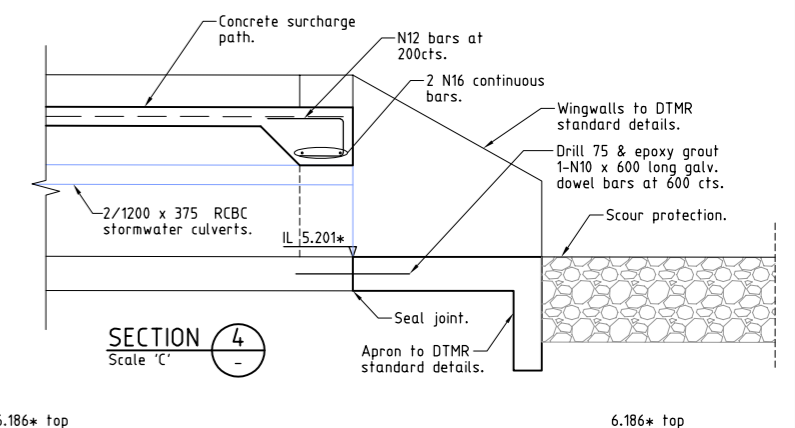
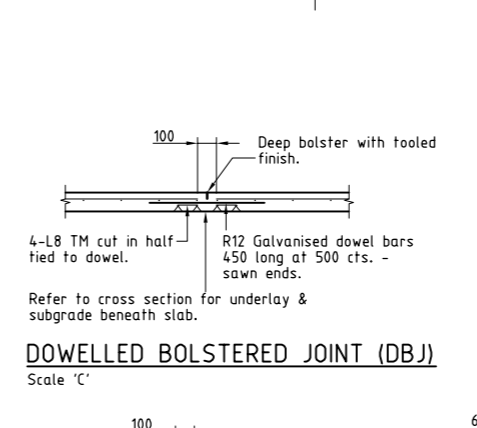
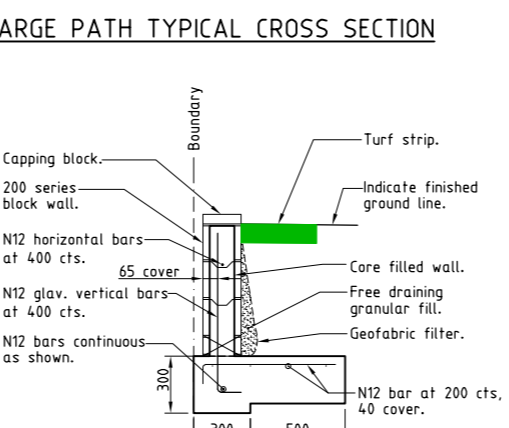
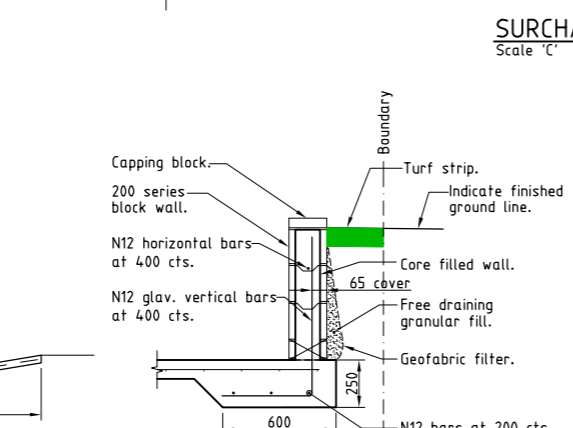
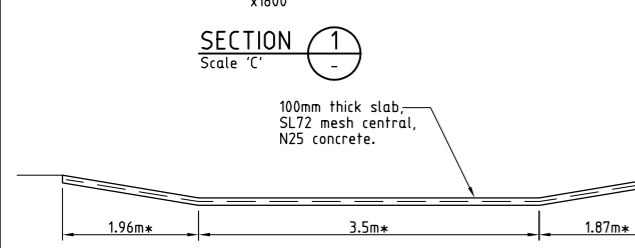
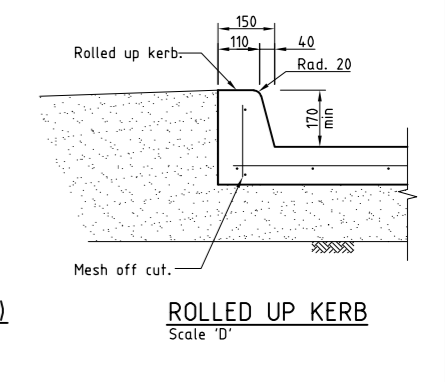
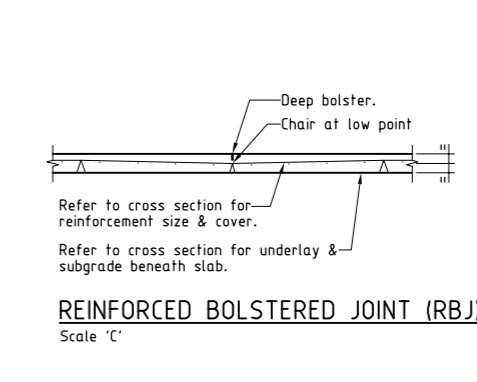
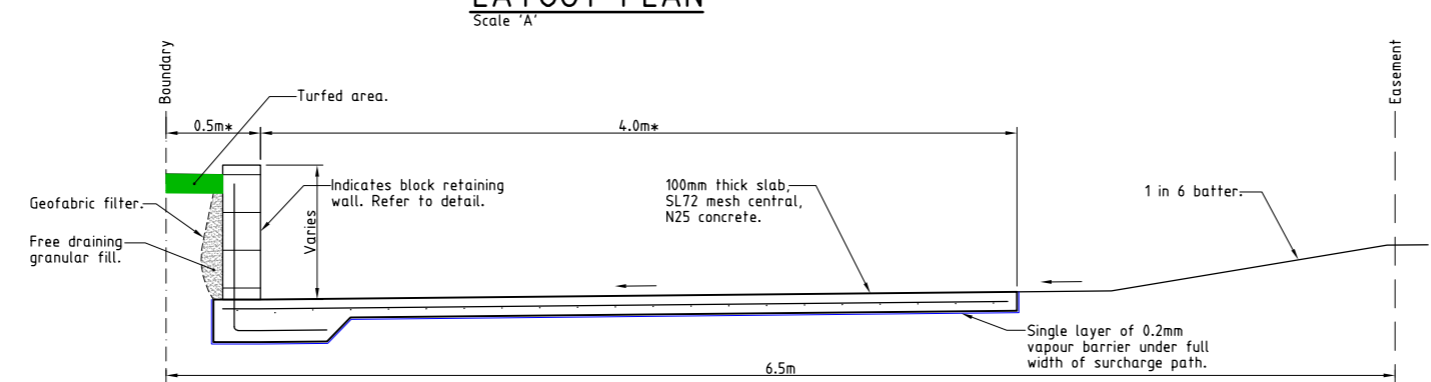
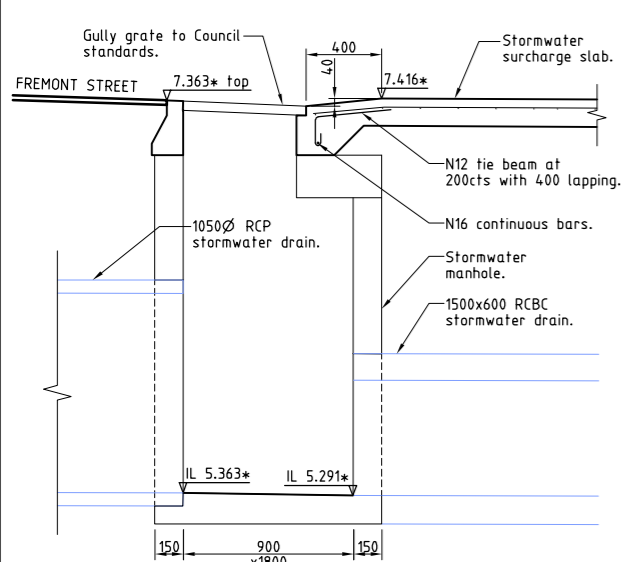


- LEGEND**
- 12,000* - As constructed surface level.
 - IL 12,000* - As constructed invert level.
 - Stormwater flow arrow.
 - Existing RP boundary.
 - Top of batter.
 - Toe of batter.
 - Sewer main.
 - Poly water main.
 - Sewer rising main.
 - Stormwater drain line.



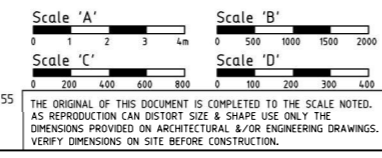
ACCEPTED AS CONSTRUCTED

ACCEPTED AS CONSTRUCTED

REAL PROPERTY DESCRIPTION
 Lot 900 on SP262005
 Parish of BOHLE
 County of ELPHINSTONE
 Conway Street - Mount Low

* - Indicates as constructed information.

LEVEL DATUM A.H.D. (Der)
 Horizontal Datum GDA' 94 Zone 55
 Refer PM 193516 RL. 8.195
 Bolt and washer in kerb
 FREMONT STREET.



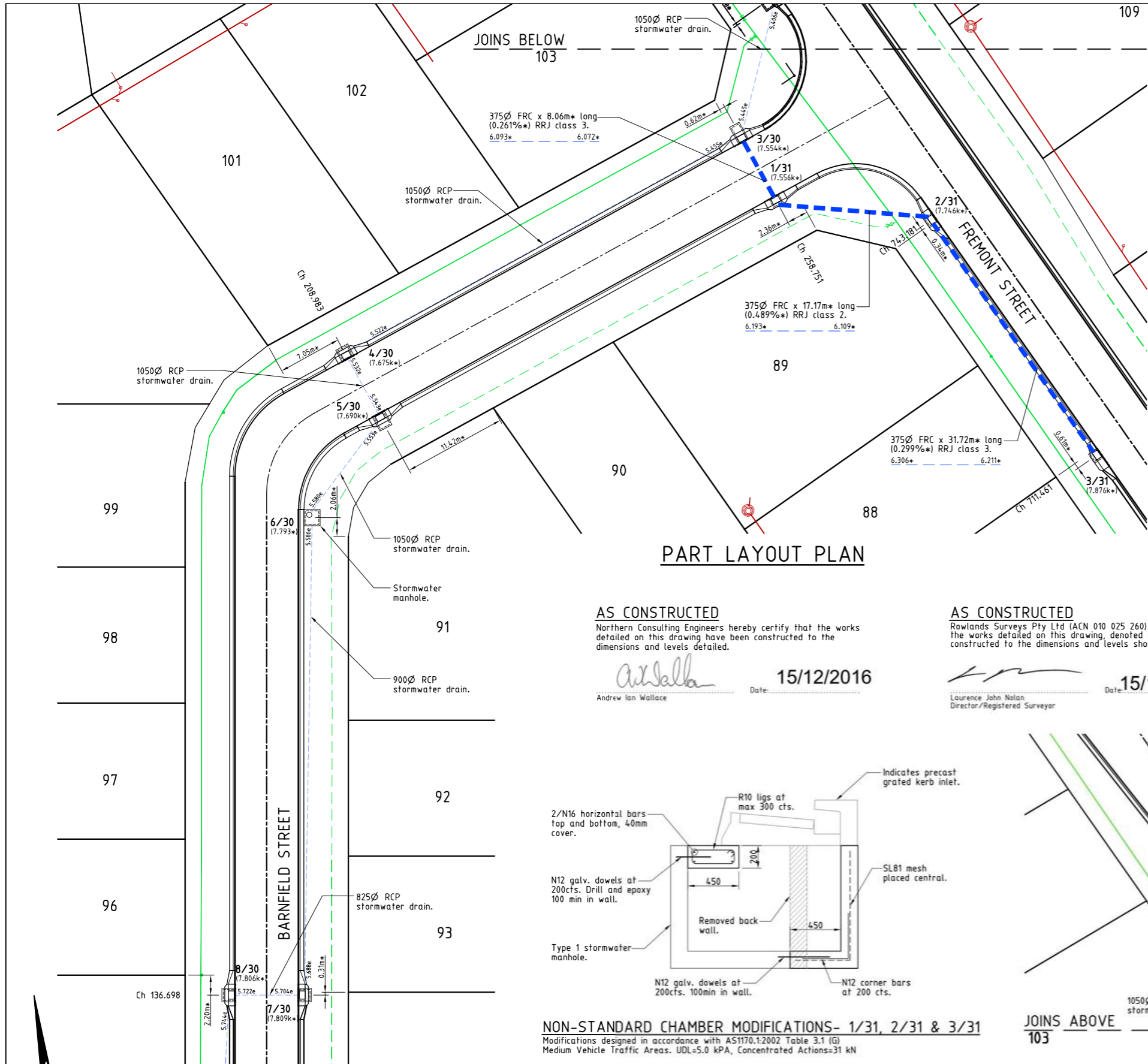
THE ORIGINAL OF THIS DOCUMENT IS COMPLETED TO THE SCALE NOTED.
 AS REPRODUCTION CAN DISTORT SIZE & SHAPE USE ONLY THE
 DIMENSIONS PROVIDED ON ARCHITECTURAL &/OR ENGINEERING DRAWINGS.
 VERIFY DIMENSIONS ON SITE BEFORE CONSTRUCTION.

SCI QUAL INTERNATIONAL
 QUALITY APPROVED TO ISO 9001:2015

NORTHERN CONSULTING
 engineers

Civil & Structural Engineers
 50 Punari Street, Currajong 4812
 Phone: [07] 4725 5550 Fax: [07] 4725 5850
 Email: mail@nceng.com.au
 Milton Messer & Associates Pty. Ltd.
 ACN 100 817 356

B	ISSUED FOR AS CONSTRUCTED.	14/12/2016
A	AMENDED FOR CONSTRUCTION.	1/10/2014
P1	PRELIMINARY - NOT FOR CONSTRUCTION - ISSUED FOR OPERATIONAL WORKS APPROVAL.	18/12/2013
Issue	Description	Date
Drawn LJ	In Association With BUSHLAND GROVE PTY LTD	
Date 18/12/2013	BUSHLAND GROVE ESTATE	
Checked D.A	STAGE 11, 28 ALLOTMENT	
Approved ALS	RESIDENTIAL SUBDIVISION,	
COPYRIGHT ©	MOUNT LOW	
Drawing Number TUR0811/12		Issue B



LEGEND

- 2/1 (12.000k*) - Pit No. 2/Drainline No. 1
- (12.000k*) - As constructed top of structure level.
- (12.000k*) - As constructed pipe invert level.
- - - - - RP boundary.
- - - - - uPVC water main.
- - - - - Poly water main.
- - - - - Stormwater drain line.
- - - - - Sewer main.
- - - - - Sewer manhole.
- - - - - Stormwater drain line.
- - - - - Sewer rising main.

NOTES:

1. All Kerb Inlet Grates are to be Class 'D' and 'Bicycle Safe' to AS 3996 U.N.O.

STORMWATER STRUCTURE SETOUT TABLE

PIT No.	EASTING	NORTHING	STRUCTURE TYPE	TOP LEVEL
8/30	464594.586*	7874759.736*	Grated Kerb Inlet (2400C)	7.806k*
7/30	464602.848*	7874758.961*	Grated Kerb Inlet (2400C)	7.809k*
6/30	464609.103*	7874811.298*	Existing Stormwater Manhole	7.793*
5/30	464617.956*	7874821.256*	Grated Kerb Inlet (2400C)	7.690k*
4/30	464614.625*	7874828.939*	Grated Kerb Inlet (2400C)	7.675k*
3/30	464660.644*	7874848.949*	Grated Kerb Inlet (2400C)	7.554k*
2/30	464665.693*	7874863.474*	Grated Kerb Inlet (2400C)	7.499k*
1/30	464670.553*	7874871.000*	Modified Grated Kerb Inlet	7.347*
1a/30	464701.383*	7874888.373*	Existing Stormwater Manhole	7.240*
0/30	464713.246*	7874895.102*	Concrete Headwall	6.008*
3/31	464696.66*	7874809.93*	Grated Kerb Inlet (2400L)	7.876k*
2/31	464681.18*	7874837.55*	Grated Kerb Inlet (2400C)	7.746k*
1/31	464663.12*	7874841.87*	Grated Kerb Inlet (2400C)	7.556k*

- All dimensions are to centre of chamber.
- All grated kerb inlets constructed over 900x900 Type 1 stormwater manhole to Council standard details U.N.O.
- Grated kerb inlets constructed on top of existing stormwater manholes 8/30, 7/30, 5/30, 4/30, 3/30 & 2/30.
- Setout for outlet structure 0/30 is to end of outlet.
- Non-Standard modifications to pits 1/31, 2/31 & 3/31 as detailed.

PART LAYOUT PLAN

AS CONSTRUCTED

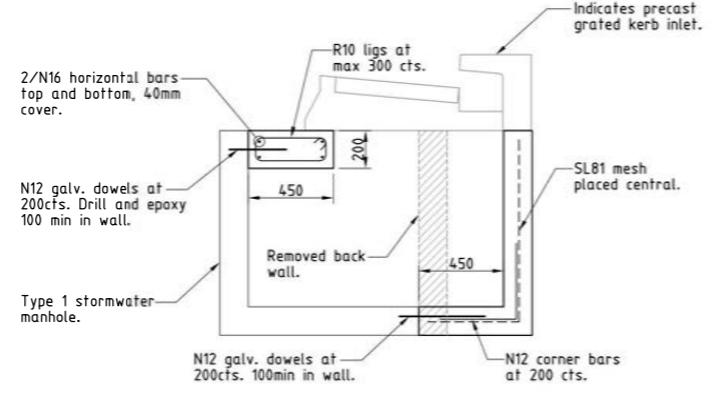
Northern Consulting Engineers hereby certify that the works detailed on this drawing have been constructed to the dimensions and levels detailed.

Andrew Ian Wallace
 Andrew Ian Wallace Date: 15/12/2016

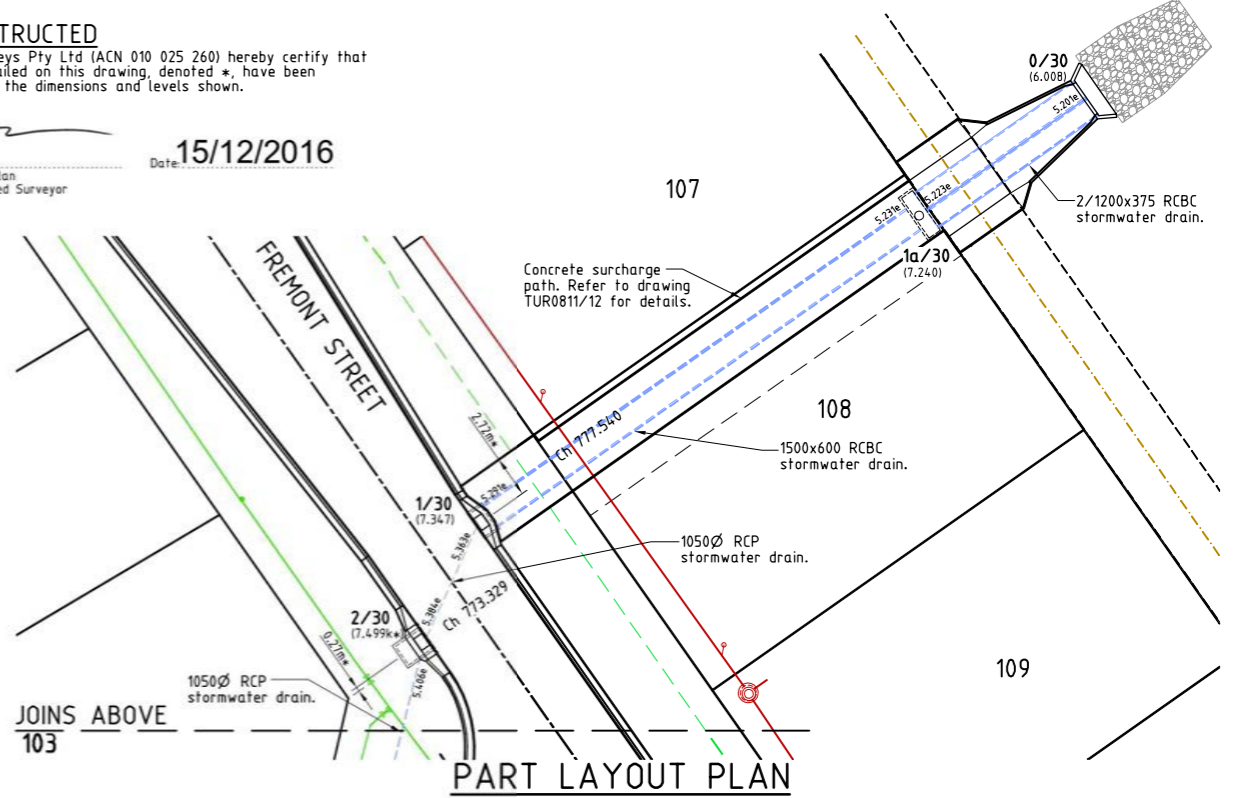
AS CONSTRUCTED

Rowlands Surveys Pty Ltd (ACN 010 025 260) hereby certify that the works detailed on this drawing, denoted *, have been constructed to the dimensions and levels shown.

Laurence John Nolan
 Laurence John Nolan Director/Registered Surveyor Date: 15/12/2016



NON-STANDARD CHAMBER MODIFICATIONS- 1/31, 2/31 & 3/31
 Modifications designed in accordance with AS1170.1:2002 Table 3.1 (G) Medium Vehicle Traffic Areas. UDL=5.0 kPa, Concentrated Actions=31 kN



PART LAYOUT PLAN

ACCEPTED AS CONSTRUCTED

REAL PROPERTY DESCRIPTION
 Lot 900 on SP262005
 Parish of BOHLE
 County of ELPHINSTONE
 Conway Street - Mount Low

LEVEL DATUM A.H.D. (Der)
 Horizontal Datum GDA' 94 Zone 55
 Refer PM 193518 RL. 8.195
 Bolt and washer in kerb
 FREMONT STREET.



THE ORIGINAL OF THIS DOCUMENT IS COMPLETED TO THE SCALE NOTED.
 AS REPRODUCTION CAN DISTORT SIZE & SHAPE USE ONLY THE DIMENSIONS PROVIDED ON ARCHITECTURAL &/OR ENGINEERING DRAWINGS.
 VERIFY DIMENSIONS ON SITE BEFORE CONSTRUCTION.

All work is carried out in accordance with LOCAL AUTHORITIES standard details.



Civil & Structural Engineers
 50 Punari Street, Currajong 4812
 Phone: (07) 4725 5550 Fax: (07) 4725 5850
 Email: mail@nceng.com.au
 Milton Messer & Associates Pty. Ltd.
 ACN 100 817 356

B	ISSUED FOR AS CONSTRUCTED.	14/12/2016
A	AMENDED FOR CONSTRUCTION.	1/10/2014
P1	PRELIMINARY - NOT FOR CONSTRUCTION - ISSUED FOR OPERATIONAL WORKS APPROVAL.	18/12/2013
Issue	Description	Date
Drawn LJ	In Association With BUSHLAND GROVE PTY LTD	
Date 18/12/2013	BUSHLAND GROVE ESTATE STAGE 11, 28 ALLOTMENT RESIDENTIAL SUBDIVISION, MOUNT LOW	
Checked D.A		
Approved ALS		
COPYRIGHT ©		
Drawing Number TUR0811/13		Issue B

LEGEND

- 2/1 (12.000k*) - Pit No. 2/Drainline No. 1
- (12.000k*) - As constructed top of structure level.
- (12.000k*) - As constructed pipe invert level.
- - - - - RP boundary.
- - - - - uPVC water main.
- - - - - Poly water main.
- - - - - Stormwater drain line.
- - - - - Sewer main.
- - - - - Sewer manhole.
- - - - - Sewer rising main.

NOTES:

1. All Kerb Inlet Grates are to be Class 'D' and 'Bicycle Safe' to AS 3996 U.N.O.


STORMWATER STRUCTURE SETOUT TABLE

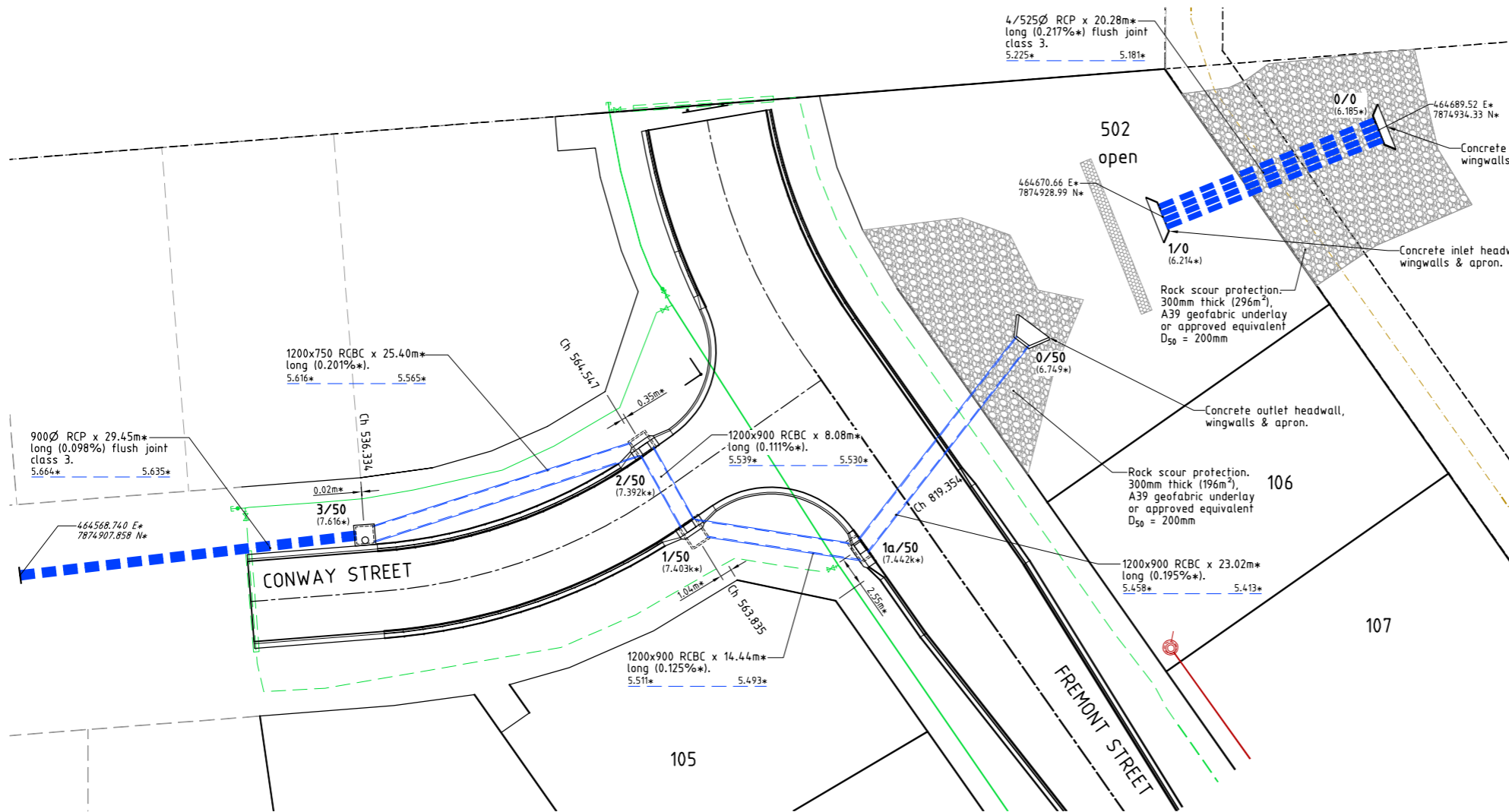
PIT No.	EASTING	NORTHING	STRUCTURE TYPE	TOP LEVEL
3/50	464599.22*	7874908.05*	1500x1500 Stormwater Manhole, Type 3	7.616*
2/50	464623.62*	7874913.81*	Grated Kerb Inlet (2400C)	7.392k*
1/50	464627.44*	7874905.63*	Grated Kerb Inlet (2400C)	7.403k*
1a/50	464641.72*	7874902.80*	Grated Kerb Inlet (2400L)	7.442k*
0/50	464657.56*	7874919.29*	Concrete Headwall	6.749*

- All dimensions are to centre of chamber.
- All grated kerb inlets constructed over 900x900 Type 1 stormwater manhole to Council standard details U.N.O.
- Setout to 0/50 is to end of stormwater drain line.
- Refer to drawing TUR0811/15 for non standard chamber construction details to to grated kerb inlets 2/50, 1/50 & 1a/50.

AS CONSTRUCTED

Rowlands Surveys Pty Ltd (ACN 010 025 260) hereby certify that the works detailed on this drawing, denoted *, have been constructed to the dimensions and levels shown.

 Date: **15/12/2016**
 Laurence John Nolan
 Director/Registered Surveyor



LAYOUT PLAN



REAL PROPERTY DESCRIPTION
 Lot 900 on SP262005
 Parish of BOHLE
 County of ELPHINSTONE
 Conway Street - Mount Low

LEVEL DATUM A.H.D. (Der)
 Horizontal Datum GDA' 94 Zone 55
 Refer PM 193518 RL. 8.195
 Bolt and washer in kerb
 FREMONT STREET.



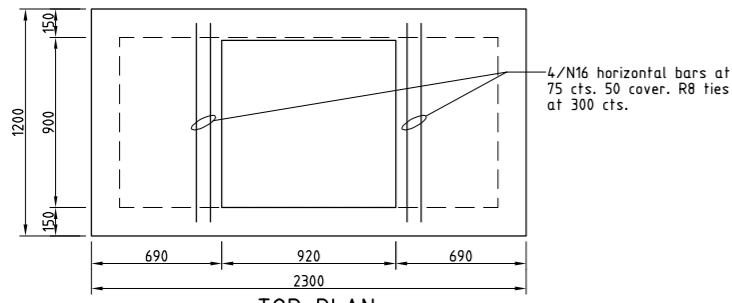
THE ORIGINAL OF THIS DOCUMENT IS COMPLETED TO THE SCALE NOTED.
 AS REPRODUCTION CAN DISTORT SIZE & SHAPE USE ONLY THE
 DIMENSIONS PROVIDED ON ARCHITECTURAL &/OR ENGINEERING DRAWINGS.
 VERIFY DIMENSIONS ON SITE BEFORE CONSTRUCTION.

All work is carried out in accordance with LOCAL AUTHORITIES standard details.

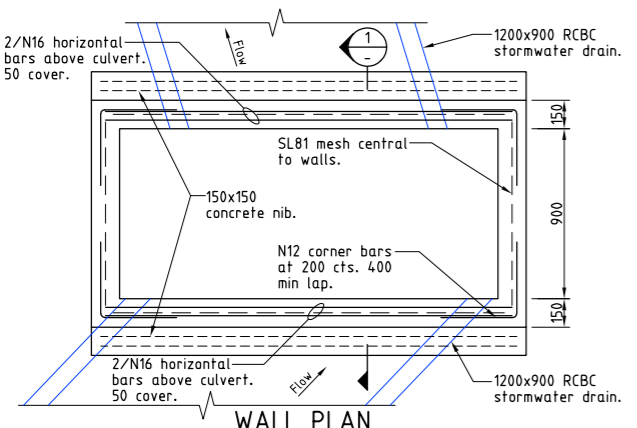


Civil & Structural Engineers
 50 Punari Street, Currajong 4812
 Phone: [07] 4725 5550 Fax: [07] 4725 5850
 Email: mail@nceng.com.au
 Milton Messer & Associates Pty. Ltd.
 ACN 100 817 356

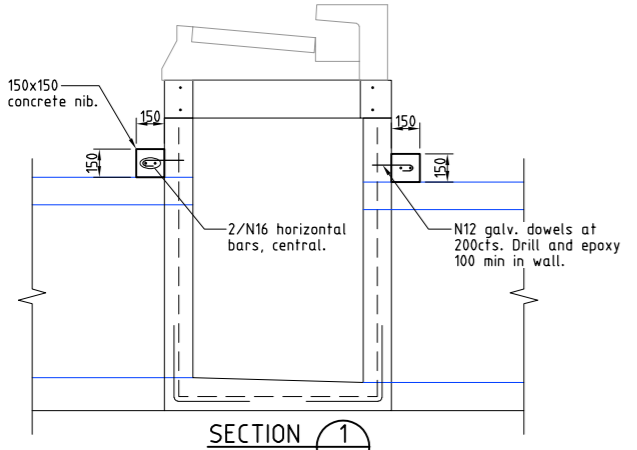
B	ISSUED FOR AS CONSTRUCTED.	14/12/2016
A	AMENDED FOR CONSTRUCTION.	1/10/2014
P1	PRELIMINARY - NOT FOR CONSTRUCTION - ISSUED FOR OPERATIONAL WORKS APPROVAL.	18/12/2013
Issue	Description	Date
Drawn U	In Association With BUSHLAND GROVE PTY LTD	
Date 18/12/2013		
Checked P.A	BUSHLAND GROVE ESTATE	
Approved ALS	STAGE 11, 28 ALLOTMENT	
COPYRIGHT ©	RESIDENTIAL SUBDIVISION, MOUNT LOW	
Drawing Number TUR0811/14		Issue B



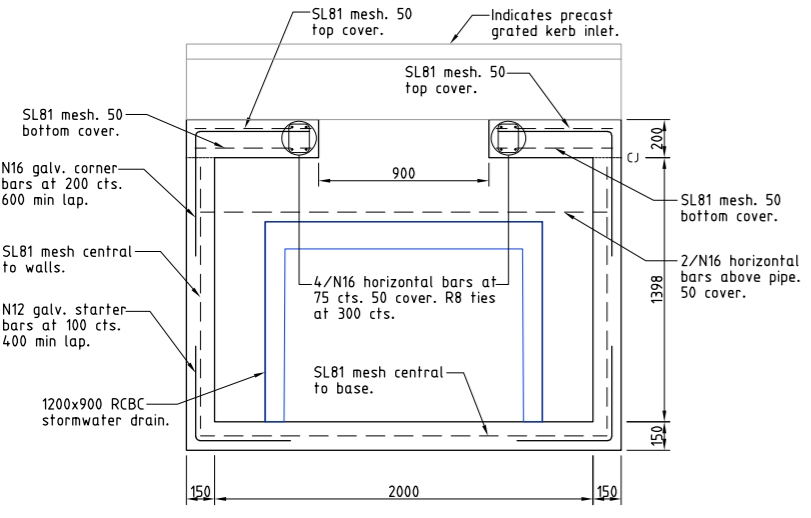
TOP PLAN



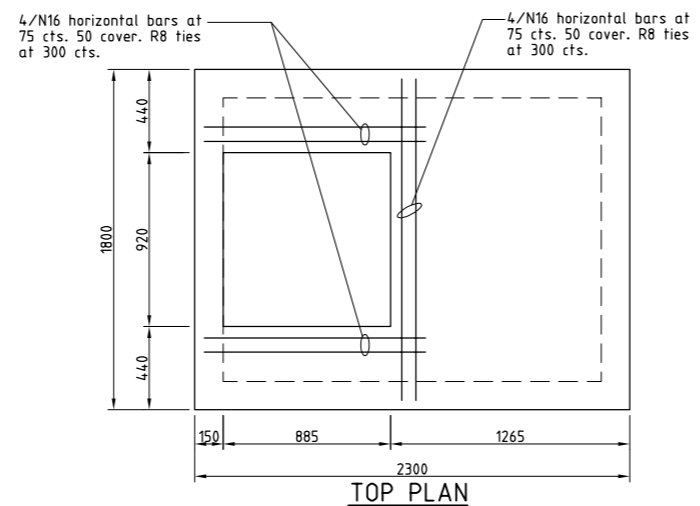
WALL PLAN



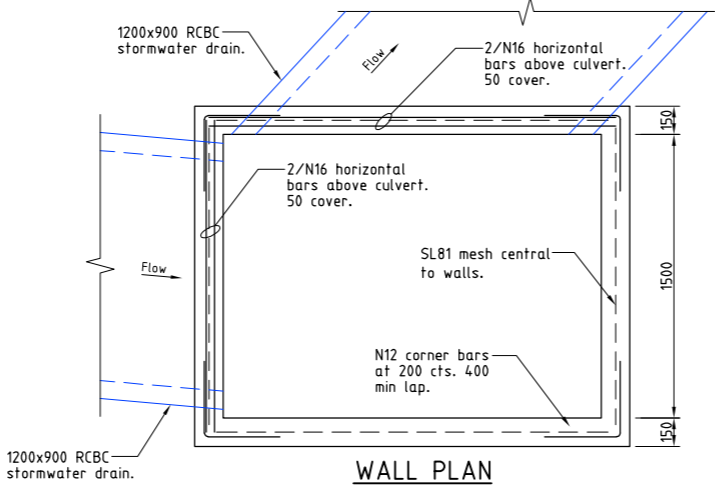
SECTION 1



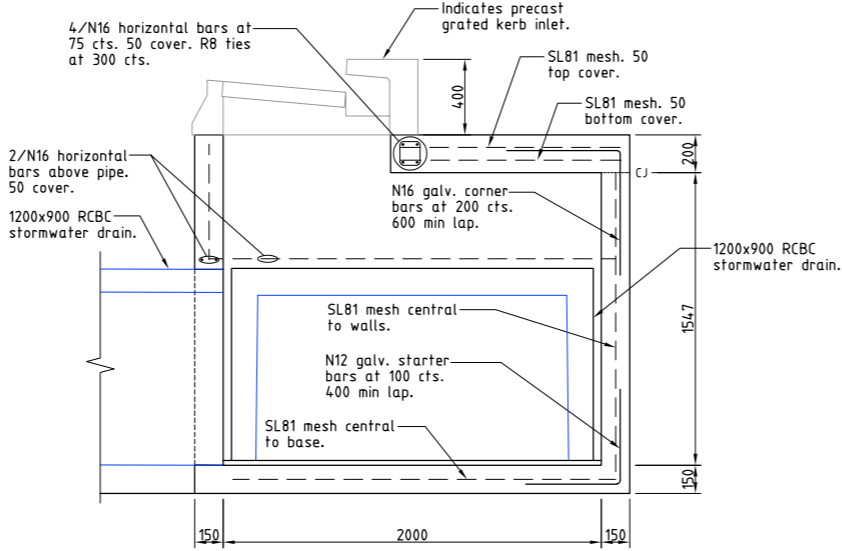
NON-STANDARD CHAMBER - 1a/50



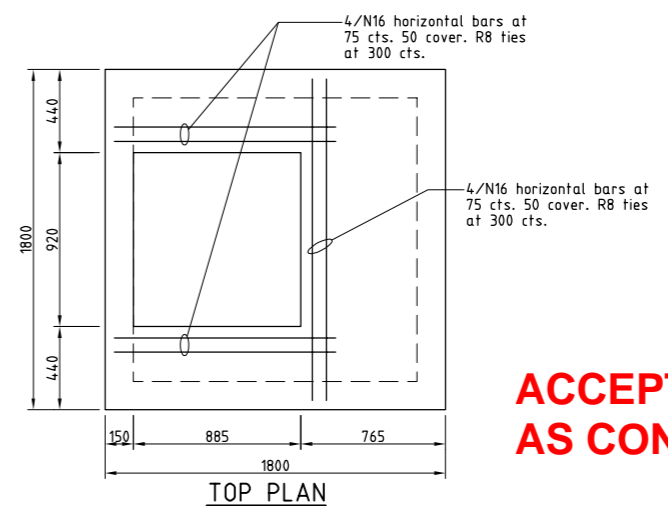
TOP PLAN



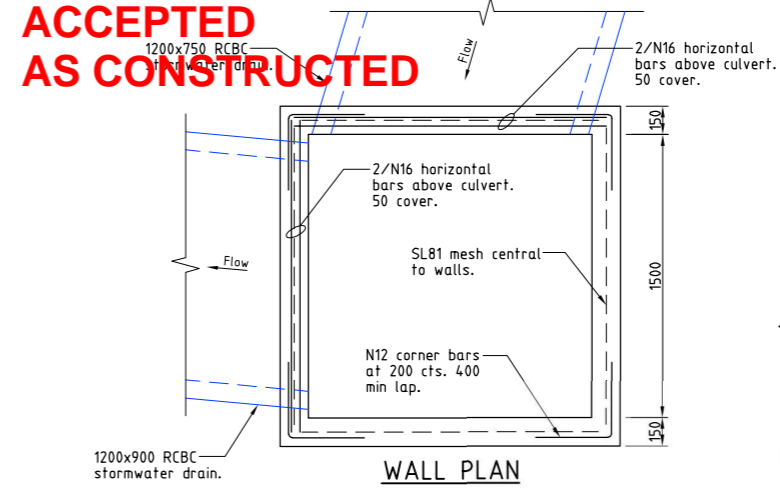
WALL PLAN



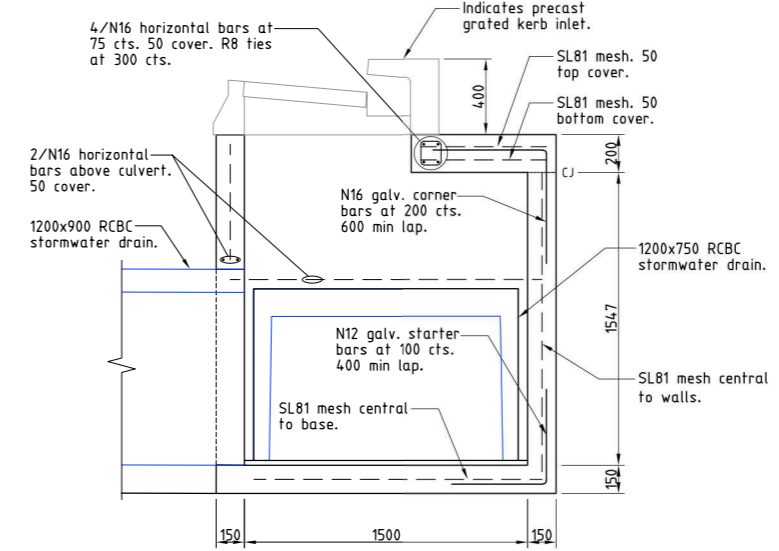
NON-STANDARD CHAMBER - 1/50



TOP PLAN



WALL PLAN



NON-STANDARD CHAMBER - 2/50

ACCEPTED AS CONSTRUCTED

ACCEPTED AS CONSTRUCTED

AS CONSTRUCTED
 Northern Consulting Engineers hereby certify that the works detailed on this drawing have been constructed to the dimensions and levels detailed.
 Andrew Ian Wallace Date: 15/12/2016

REAL PROPERTY DESCRIPTION
 Lot 900 on SP262005
 Parish of BOHLE
 County of ELPHINSTONE
 Conway Street - Mount Low

LEVEL DATUM A.H.D. (Der)
 Horizontal Datum GDA' 94 Zone 55
 Refer PM 193518 RL. 8.195
 Bolt and washer in kerb
 FREMONT STREET.

Scale
 0 200 400 600 800mm
 THE ORIGINAL OF THIS DOCUMENT IS COMPLETED TO THE SCALE NOTED.
 AS REPRODUCTION CAN DISTORT SIZE & SHAPE USE ONLY THE
 DIMENSIONS PROVIDED ON ARCHITECTURAL &/OR ENGINEERING DRAWINGS.
 VERIFY DIMENSIONS ON SITE BEFORE CONSTRUCTION.

All work is carried out in accordance with LOCAL AUTHORITIES standard details.



Civil & Structural Engineers
 50 Punari Street, Curralong 4812
 Phone: [07] 4725 5550 Fax: [07] 4725 5850
 Email: mail@nceng.com.au
 Milton Messer & Associates Pty. Ltd.
 ACN 100 817 356

B	ISSUED FOR AS CONSTRUCTED.	14/12/2016
A	AMENDED FOR CONSTRUCTION.	1/10/2014
P1	PRELIMINARY - NOT FOR CONSTRUCTION - ISSUED FOR OPERATIONAL WORKS APPROVAL.	18/12/2013
Issue	Description	Date
Drawn LJ	In Association With BUSHLAND GROVE PTY LTD	
Date 18/12/2013		
Checked D.A	BUSHLAND GROVE ESTATE	
Approved ALS	STAGE 11, 28 ALLOTMENT	
COPYRIGHT ©	RESIDENTIAL SUBDIVISION, MOUNT LOW	
	Drawing Number TUR0811/15	Issue B