

SEWER MANHOLES

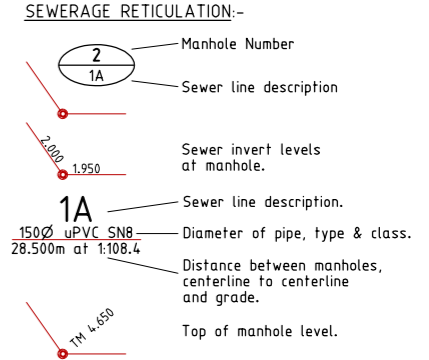
Manhole No.	Easting	Northing
4/ML01C4	464686.91*	7874858.03*
5/ML01C4	464667.63*	7874891.57*
1/ML01C4a	464656.95*	7874807.33*
1/ML01C5	464642.96*	7874786.94*
1/ML01C6	464563.485*	7874811.127*
2/ML01C6	464567.090*	7874848.117*
1/ML01C6a	464620.485*	7874872.792*

- All dimensions are to centre of chamber.

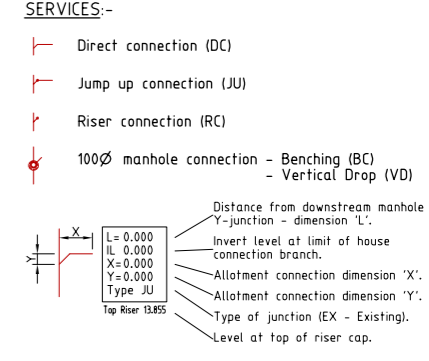
AS CONSTRUCTED
 Rowlands Surveys Pty Ltd (ACN 010 025 260) hereby certify that the works detailed on this drawing, denoted *, have been constructed to the dimensions and levels shown.

15/12/2016
 Laurence John Nolan
 Director/Registered Surveyor

- LEGEND**
- GENERAL-**
- RP boundary.
 - Top of batter.
 - Toe of batter.
 - Change of grade.
 - Stormwater drain line.
 - Sewer main.
 - Sewer manhole.
 - uPVC water main.
 - Poly water main.
 - Stormwater drain line.
 - Sewer main.
 - Sewer manhole.
 - Sewer rising main.
 - Water main.
 - Poly water main.



ACCEPTED AS CONSTRUCTED



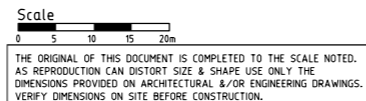
- NOTES:**
- All sewer manholes are 1050mm as per Council details U.N.O.
 - All sewer manhole tops are type 2 class 'B' covers U.N.O.
 - All 225mm & 150mm sewer mains & fittings are uPVC class SN8.
 - All 100mm sewer mains & fittings are uPVC class SN10.
 - Service connection invert levels marked with a '#' indicates the invert level on the sewer main + 200mm with allotment drainage capable of connecting between the top of riser & level denoted with '#'.
 Example: L= 0.000, IL= 6.937, X= 0.880, Y= 0.860, Type EX, Top Riser 13.855

REAL PROPERTY DESCRIPTION
 Lot 900 on SP262005
 Parish of BOHLE
 County of ELPHINSTONE
 Conway Street - Mount Low

LAYOUT PLAN

LEVEL DATUM A.H.D. (Der)
 Horizontal Datum GDA' 94 Zone 55
 Refer PM 193518 RL. 8.195
 Bolt and washer in kerb
 FREMONT STREET.

* - Indicates as constructed information.



All work is carried out in accordance with LOCAL AUTHORITIES standard details.

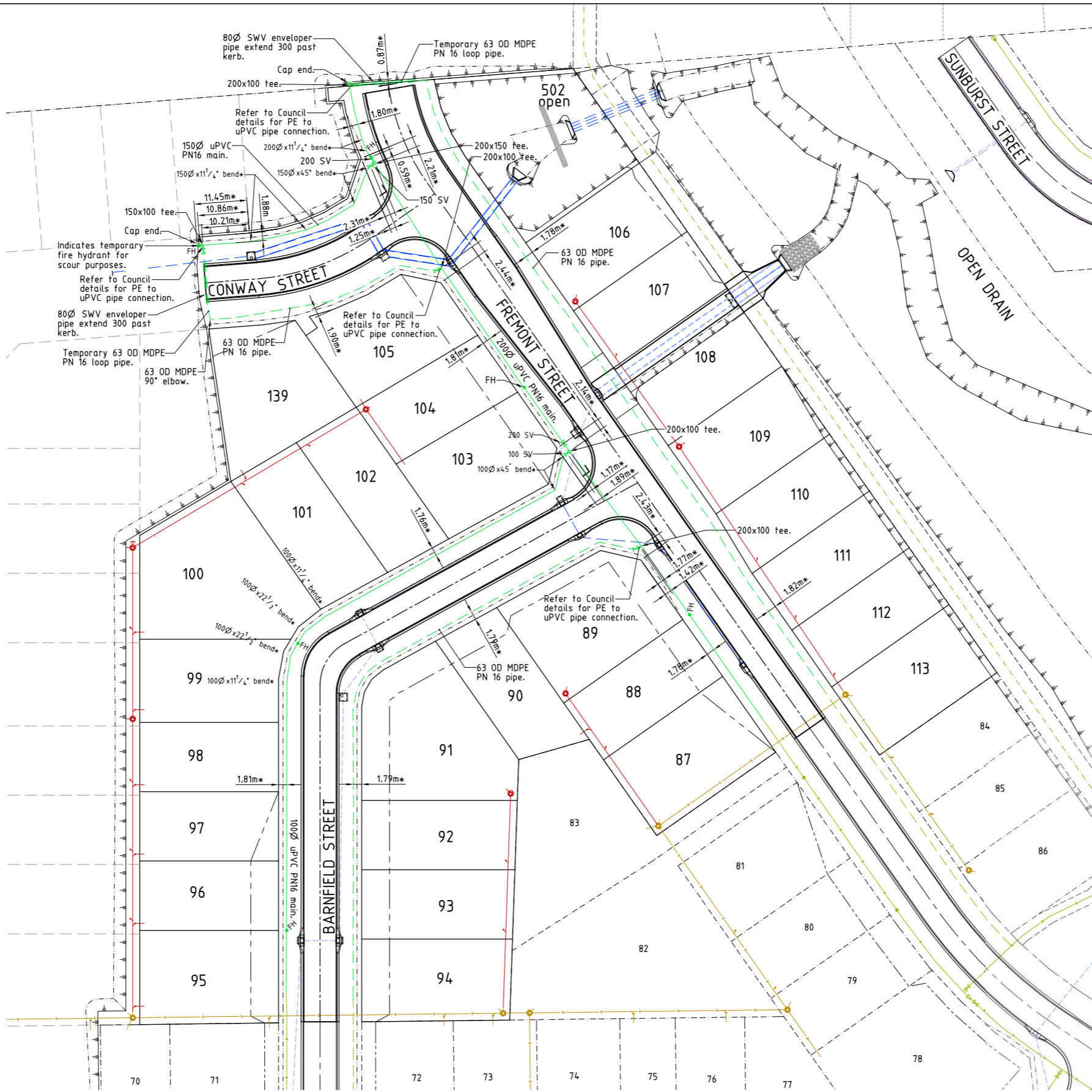
SCI QUAL INTERNATIONAL
 QUALITY APPROVED TO ISO 9001:2015

NORTHERN CONSULTING
 engineers

Civil & Structural Engineers
 50 Punari Street, Curralong 4812
 Phone: (07) 4725 5550 Fax: (07) 4725 5850
 Email: mail@nceng.com.au
 Milton Messer & Associates Pty. Ltd.
 ACN 100 817 356

Issue	Description	Date
C	ISSUED FOR AS CONSTRUCTED.	14/12/2016
B	SEWER AND LOT LEVELS AMENDED.	17/03/2016
A	AMENDED FOR CONSTRUCTION.	1/10/2014
P2	PRELIMINARY - NOT FOR CONSTRUCTION - AMENDED TO COUNCIL'S REQUIREMENTS.	14/05/2014
P1	PRELIMINARY - NOT FOR CONSTRUCTION - ISSUED FOR OPERATIONAL WORKS APPROVAL.	18/12/2013

Drawn LJ	In Association With BUSHLAND GROVE PTY LTD	SEWERAGE RETICULATION PLAN
Date 18/12/2013	BUSHLAND GROVE ESTATE STAGE 11, 28 ALLOTMENT RESIDENTIAL SUBDIVISION, MOUNT LOW	
Checked D.A.		Drawing Number TUR0811/16
Approved ALS		Issue C
COPYRIGHT ©		



LEGEND

- GENERAL:-**
- RP boundary.
 - Top of batter.
 - Toe of batter.
 - Change of grade.
 - Stormwater drain line.
 - Sewer main.
 - Sewer manhole.
 - uPVC water main.
 - Poly water main.
 - Stormwater drain line.
 - Sewer main.
 - Sewer manhole.
 - Sewer rising main.
 - Water main.
 - Poly water main.

NOTES:

- AS CONSTRUCTED WATER RETICULATION:**
1. All water supply fixtures (FH, SV etc.) have been installed in accordance with Townsville City Council standards. ie. adjacent to boundary intersection, U.N.O.
 2. All uPVC water mains & fittings are Class 16, C.I.O.D. compatible unless shown otherwise.

WATER RETICULATION:-

- FH Fire Hydrant.
- SV Stop Valve.

AS CONSTRUCTED

Rowlands Surveys Pty Ltd (ACN 010 025 260) hereby certify that the works detailed on this drawing, denoted *, have been constructed to the dimensions and levels shown.

Laurence John Nolan Date: **15/12/2016**
 Director/Registered Surveyor

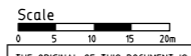
**ACCEPTED
AS CONSTRUCTED**

LAYOUT PLAN

All work is carried out in accordance with LOCAL AUTHORITIES standard details.

REAL PROPERTY DESCRIPTION
 Lot 900 on SP262005
 Parish of BOHLE
 County of ELPHINSTONE
 Conway Street - Mount Low

LEVEL DATUM A.H.D. (Der)
 Horizontal Datum GDA' 94 Zone 55
 Refer PM 193518 RL. 8.195
 Bolt and washer in kerb
 FREMONT STREET.



THE ORIGINAL OF THIS DOCUMENT IS COMPLETED TO THE SCALE NOTED. AS REPRODUCTION CAN DISTORT SIZE & SHAPE USE ONLY THE DIMENSIONS PROVIDED ON ARCHITECTURAL &/OR ENGINEERING DRAWINGS. VERIFY DIMENSIONS ON SITE BEFORE CONSTRUCTION.



Civil & Structural Engineers
 50 Punari Street, Currajong 4812
 Phone: [07] 4725 5550 Fax: [07] 4725 5850
 Email: mail@nceng.com.au
 Milton Messer & Associates Pty. Ltd.
 ACN 100 817 356

B	ISSUED FOR AS CONSTRUCTED.	14/12/2016
A	AMENDED FOR CONSTRUCTION.	1/10/2014
P2	PRELIMINARY - NOT FOR CONSTRUCTION - AMENDED TO COUNCIL'S REQUIREMENTS.	14/05/2014
P1	PRELIMINARY - NOT FOR CONSTRUCTION - ISSUED FOR OPERATIONAL WORKS APPROVAL.	18/12/2013

Issue	Description	Date
Drawn LJ	In Association With BUSHLAND GROVE PTY LTD	
Date 18/12/2013		
Checked D.A	BUSHLAND GROVE ESTATE STAGE 11, 28 ALLOTMENT RESIDENTIAL SUBDIVISION, MOUNT LOW	
Approved ALS		
COPYRIGHT ©		
	WATER RETICULATION PLAN	
	Drawing Number TUR0811/17	Issue B