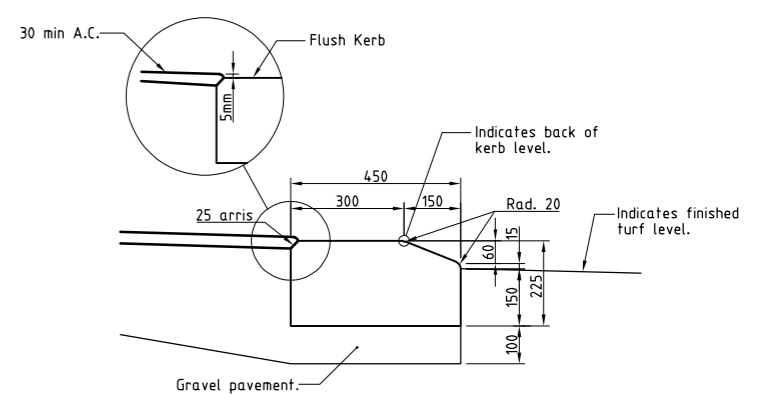


- LEGEND**
- 2/1 - Pit No. 2/Drainline No. 1
  - - Stormwater flow arrow.
  - Q50 7.500 - Low drain Q50 level.
  - - - - - RP boundary.
  - - - - - Top of batter.
  - - - - - Toe of batter.
  - - - - - Change of grade.
  - - - - - Stormwater drain line.
  - - - - - Sewer manhole.
  - - - - - Sewer main.
  - - - - - uPVC water main.
  - - - - - Poly water main.
  - - - - - Stormwater drain line.
  - - - - - Sewer manhole.
  - - - - - Sewer main.
  - - - - - Sewer manhole.
  - - - - - Sewer rising main.
  - - - - - Water main.
  - - - - - Poly water main.

**ACCEPTED  
AS CONSTRUCTED**



**FLUSH KERB**  
N.T.S.

**AS CONSTRUCTED**  
Northern Consulting Engineers hereby certify that the works detailed on this drawing have been constructed to the dimensions and levels detailed.  
*Andrew Ian Wallace* 15/12/2016  
Andrew Ian Wallace Date

**AS CONSTRUCTED**  
Rowlands Surveys Pty Ltd (ACN 010 025 260) hereby certify that the works detailed on this drawing, denoted \*, have been constructed to the dimensions and levels shown.  
*Laurence John Nolan* 15/12/2016  
Laurence John Nolan Director/Registered Surveyor Date

**LAYOUT PLAN**

All work is carried out in accordance with LOCAL AUTHORITIES standard details.

REFER TO DRAWING TUR0811/8 FOR ROAD TYPICAL SECTIONS.

C	ISSUED FOR AS CONSTRUCTED.	14/12/2016
B	SEWER AND LOTS LEVELS AMENDED.	17/03/2016
A	AMENDED FOR CONSTRUCTION.	1/10/2014
P1	PRELIMINARY - NOT FOR CONSTRUCTION - ISSUED FOR OPERATIONAL WORKS APPROVAL.	18/12/2013
Issue	Description	Date

**REAL PROPERTY DESCRIPTION**  
Lot 900 on SP262005  
Parish of BOHLE  
County of ELPHINSTONE  
Conway Street - Mount Low

LEVEL DATUM A.H.D. (Der)  
Horizontal Datum GDA' 94 Zone 55  
Refer PM 193518 RL. 8.195  
Bolt and washer in kerb  
FREMONT STREET.

Scale 0 5 10 15 20m  
THE ORIGINAL OF THIS DOCUMENT IS COMPLETED TO THE SCALE NOTED.  
AS REPRODUCTION CAN DISTORT SIZE & SHAPE USE ONLY THE DIMENSIONS PROVIDED ON ARCHITECTURAL &/OR ENGINEERING DRAWINGS.  
VERIFY DIMENSIONS ON SITE BEFORE CONSTRUCTION.



Civil & Structural Engineers  
50 Punari Street, Currajong 4812  
Phone: [07] 4725 5550 Fax: [07] 4725 5850  
Email: mail@nceng.com.au  
Milton Messer & Associates Pty. Ltd.  
ACN 100 817 356

Drawn LJ Date 18/12/2013	In Association With <b>BUSHLAND GROVE PTY LTD</b>	<b>LAYOUT PLAN, ROADWORKS &amp; STORMWATER</b>
Checked D.A. Approved ALS	<b>BUSHLAND GROVE ESTATE STAGE 11, 28 ALLOTMENT RESIDENTIAL SUBDIVISION, MOUNT LOW</b>	
COPYRIGHT ©		Drawing Number <b>TUR0811/3</b>
		Issue <b>C</b>

\* - Indicates as constructed information.





**LEGEND**

12.000*	- As constructed surface levels.
12.000	- Surface levels.
Q50 12.00	- Q50 water surface levels.
→	- Stormwater flow arrow.
- - - - -	- RP boundary.
- - - - -	- Top of batter.
- - - - -	- Toe of batter.
- - - - -	- Toe of batter.
- - - - -	- Sewer main.
○	- Sewer manhole.
- - - - -	- uPVC water main.
- - - - -	- Poly water main.
- - - - -	- Stormwater drain line.
- - - - -	- Stormwater drain line.
- - - - -	- Sewer main.
○	- Sewer manhole.
- - - - -	- Water main.
- - - - -	- Poly water main.

**ACCEPTED  
AS CONSTRUCTED**

**NOTES:**  
1. All fill material placed, compacted & tested in accordance with AS 3798 'Guidelines on Earthworks for Commercial & Residential Developments'.

**AS CONSTRUCTED**  
Rowlands Surveys Pty Ltd (ACN 010 025 260) hereby certify that the works detailed on this drawing, denoted \*, have been constructed to the dimensions and levels shown.

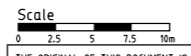
*Laurence John Nolan* 15/12/2016  
Director/Registered Surveyor

**LAYOUT PLAN**

All work is carried out in accordance with LOCAL AUTHORITIES standard details.

**REAL PROPERTY DESCRIPTION**  
Lot 900 on SP262005  
Parish of BOHLE  
County of ELPHINSTONE  
Conway Street - Mount Low

LEVEL DATUM A.H.D. (Der)  
Horizontal Datum GDA' 94 Zone 55  
Refer PM 193518 RL. 8.195  
Bolt and washer in kerb  
FREMONT STREET.

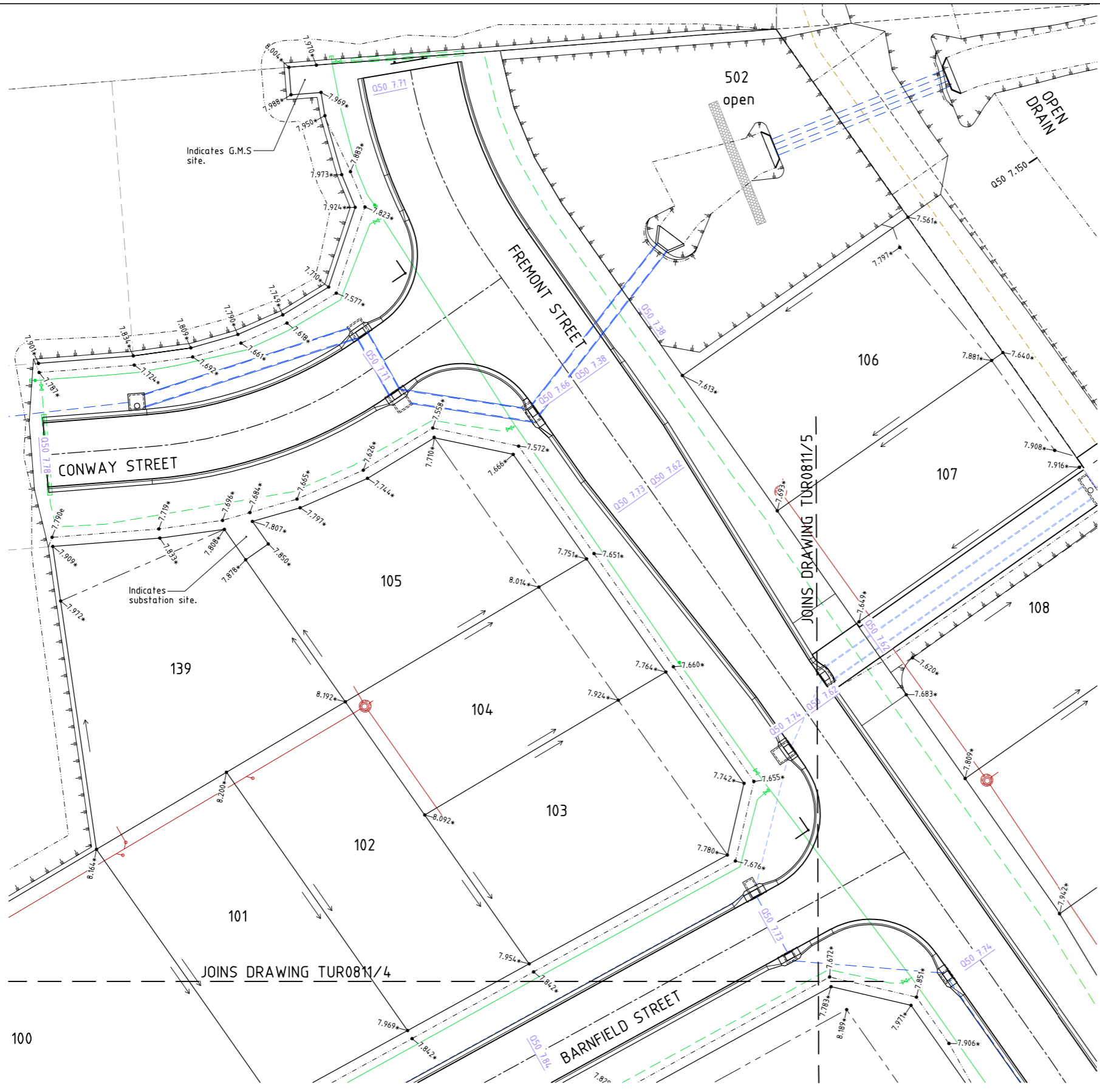


THE ORIGINAL OF THIS DOCUMENT IS COMPLETED TO THE SCALE NOTED. AS REPRODUCTION CAN DISTORT SIZE & SHAPE USE ONLY THE DIMENSIONS PROVIDED ON ARCHITECTURAL &/OR ENGINEERING DRAWINGS. VERIFY DIMENSIONS ON SITE BEFORE CONSTRUCTION.



Civil & Structural Engineers  
50 Punari Street, Currajong 4812  
Phone: [07] 4725 5550 Fax: [07] 4725 5850  
Email: mail@nceng.com.au  
Milton Messer & Associates Pty. Ltd.  
ACN 100 817 356

B	ISSUED FOR AS CONSTRUCTED.	14/12/2016
A	AMENDED FOR CONSTRUCTION.	1/10/2014
P1	PRELIMINARY - NOT FOR CONSTRUCTION - ISSUED FOR OPERATIONAL WORKS APPROVAL.	18/12/2013
Issue	Description	Date
Drawn LJ	In Association With <b>BUSHLAND GROVE PTY LTD</b>	
Date 18/12/2013		
Checked P.A	<b>BUSHLAND GROVE ESTATE STAGE 11, 28 ALLOTMENT RESIDENTIAL SUBDIVISION, MOUNT LOW</b>	
Approved ALS		
COPYRIGHT ©		
Drawing Number <b>TUR0811/5</b>		Issue <b>B</b>



**LEGEND**

12,000*	- As constructed surface levels.
12,000	- Surface levels.
050 12.00	- Q50 water surface levels.
→	- Stormwater flow arrow.
- - - - -	- RP boundary.
- - - - -	- Top of batter.
- - - - -	- Toe of batter.
- - - - -	- Toe of batter.
- - - - -	- Sewer main.
○	- Sewer manhole.
- - - - -	- uPVC water main.
- - - - -	- Poly water main.
- - - - -	- Stormwater drain line.
- - - - -	- Stormwater drain line.
- - - - -	- Sewer main.
○	- Sewer manhole.
- - - - -	- Water main.
- - - - -	- Poly water main.

**ACCEPTED  
AS CONSTRUCTED**

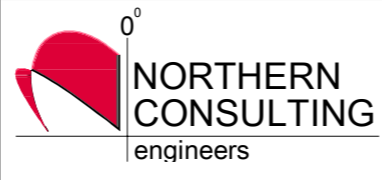
**NOTES:**  
1. All fill material placed, compacted & tested in accordance with AS 3798 'Guidelines on Earthworks for Commercial & Residential Developments'.

**AS CONSTRUCTED**  
Rawlands Surveys Pty Ltd (ACN 010 025 260) hereby certify that the works detailed on this drawing, denoted \*, have been constructed to the dimensions and levels shown.

*Laurence John Nolan* Date: **15/12/2016**  
Director/Registered Surveyor

**LAYOUT PLAN**

All work is carried out in accordance with LOCAL AUTHORITIES standard details.



Civil & Structural Engineers  
50 Punari Street, Currajong 4812  
Phone: [07] 4725 5550 Fax: [07] 4725 5850  
Email: mail@nceng.com.au  
Milton Messer & Associates Pty. Ltd.  
ACN 100 817 356

C	ISSUED FOR AS CONSTRUCTED.	14/12/2016
B	SEWER AND LOT LEVELS AMENDED.	17/03/2016
A	AMENDED FOR CONSTRUCTION.	1/10/2014
P1	PRELIMINARY - NOT FOR CONSTRUCTION - ISSUED FOR OPERATIONAL WORKS APPROVAL.	18/12/2013

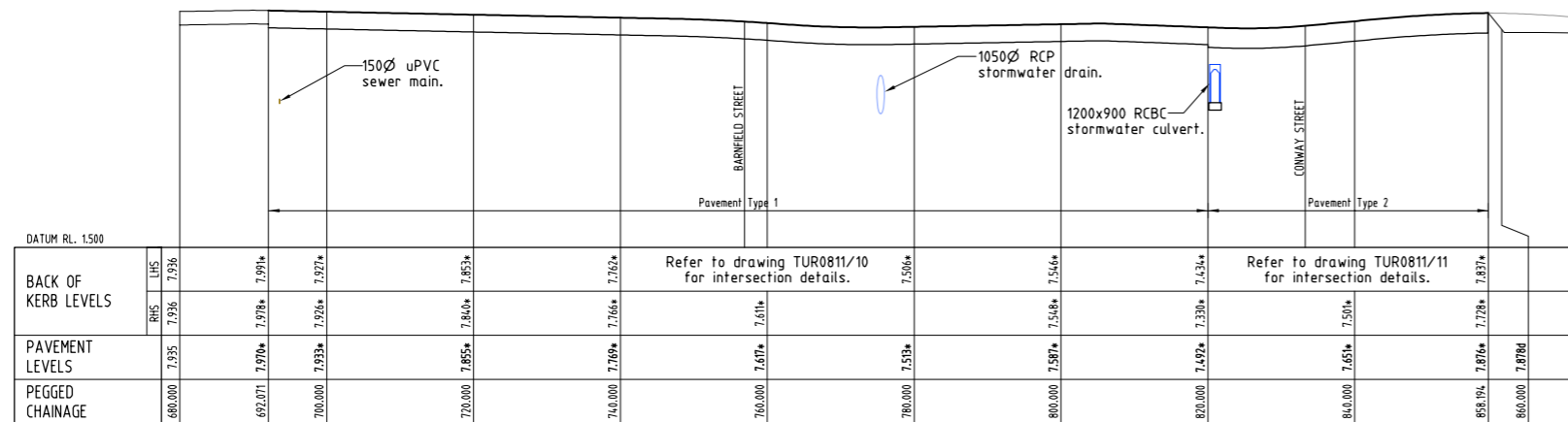
Issue	Description	Date
Drawn LJ	In Association With <b>BUSHLAND GROVE PTY LTD</b>	
Date 18/12/2013		
Checked D.A	<b>BUSHLAND GROVE ESTATE</b>	
Approved ALS	<b>STAGE 11, 28 ALLOTMENT</b>	
COPYRIGHT ©	<b>RESIDENTIAL SUBDIVISION, MOUNT LOW</b>	
	Drawing Number <b>TUR0811/6</b>	Issue <b>C</b>

**REAL PROPERTY DESCRIPTION**  
Lot 900 on SP262005  
Parish of BOHLE  
County of ELPHINSTONE  
Conway Street - Mount Low

LEVEL DATUM A.H.D. (Der)  
Horizontal Datum GDA' 94 Zone 55  
Refer PM 193518 RL. 8.195  
Bolt and washer in kerb  
FREMONT STREET.

Scale  
0 2.5 5 7.5 10m  
THE ORIGINAL OF THIS DOCUMENT IS COMPLETED TO THE SCALE NOTED.  
AS REPRODUCTION CAN DISTORT SIZE & SHAPE USE ONLY THE  
DIMENSIONS PROVIDED ON ARCHITECTURAL &/OR ENGINEERING DRAWINGS.  
VERIFY DIMENSIONS ON SITE BEFORE CONSTRUCTION.

\* - Indicates as constructed information.



**FREMONT STREET**  
(Regulatory Speed Zone 50 km/h)

PAVEMENT TYPE	PAVEMENT DESCRIPTION
Type 1	30mm AC10M Asphalt. Prime 100mm cement modified base course, DTMR Type 2.1. 120mm cement modified sub-base course, DTMR Type 2.3. 250mm insitu lime stabilised subgrade (3.1% quicklime, spread rate 14kg/m <sup>2</sup> )
Type 2	30mm AC10M Asphalt. Prime 135mm cement modified base course, DTMR Type 2.1. 130mm cement modified sub-base course, DTMR Type 2.3. 250mm insitu lime stabilised subgrade (3.1% quicklime, spread rate 14kg/m <sup>2</sup> )

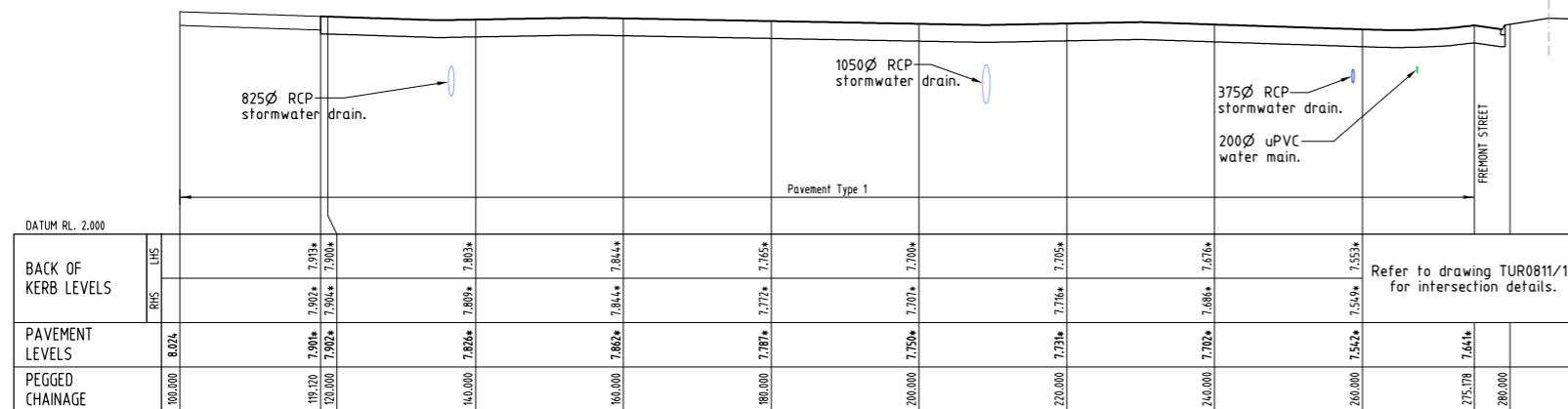
**AS CONSTRUCTED**

Rowlands Surveys Pty Ltd (ACN 010 025 260) hereby certify that the works detailed on this drawing, denoted \*, have been constructed to the dimensions and levels shown.

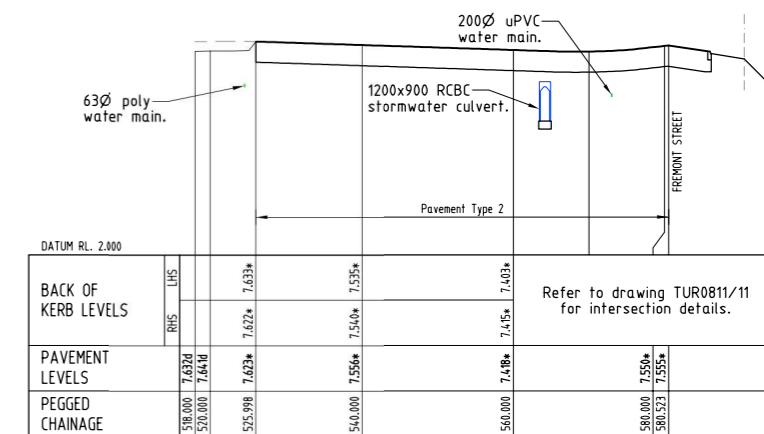
*Laurence John Nolan*  
Laurence John Nolan  
Director/Registered Surveyor

Date: 15/12/2016

**ACCEPTED  
AS CONSTRUCTED**



**BARNFIELD STREET**  
(Regulatory Speed Zone 50 km/h)



**CONWAY STREET**  
(Regulatory Speed Zone 50 km/h)

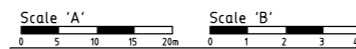
\* - Indicates future road centreline design level.

**LONGITUDINAL SECTIONS**

Scale 'A' - Horizontal  
Scale 'B' - Vertical

REAL PROPERTY DESCRIPTION  
Lot 900 on SP262005  
Parish of BOHLE  
County of ELPHINSTONE  
Conway Street - Mount Low

LEVEL DATUM A.H.D. (Der)  
Horizontal Datum GDA' 94 Zone 55  
Refer PM 193518 RL. 8.195  
Bolt and washer in kerb  
FREMONT STREET.



THE ORIGINAL OF THIS DOCUMENT IS COMPLETED TO THE SCALE NOTED.  
AS REPRODUCTION CAN DISTORT SIZE & SHAPE USE ONLY THE  
DIMENSIONS PROVIDED ON ARCHITECTURAL &/OR ENGINEERING DRAWINGS.  
VERIFY DIMENSIONS ON SITE BEFORE CONSTRUCTION.



Civil & Structural Engineers  
50 Punari Street, Currajong 4812  
Phone: (07) 4725 5550 Fax: (07) 4725 5850  
Email: mail@nceng.com.au  
Milton Messer & Associates Pty. Ltd.  
ACN 100 817 356

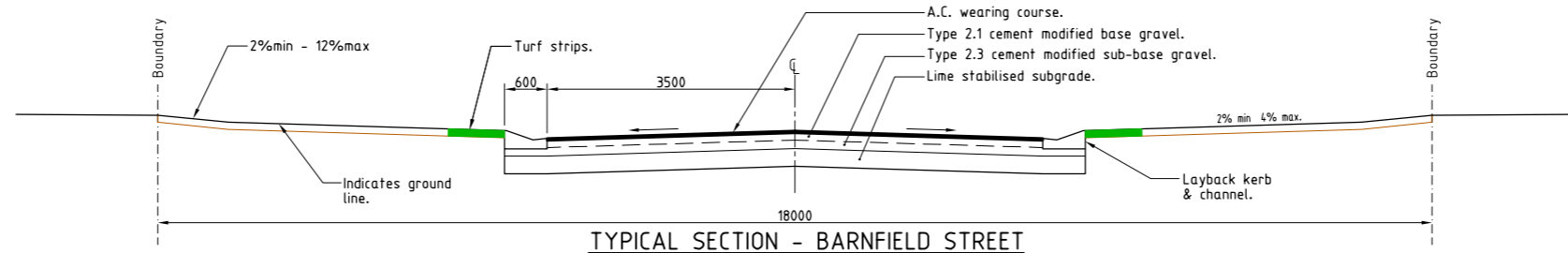
All work is carried out in accordance with LOCAL AUTHORITIES standard details.

REFER TO DRAWING TUR0811/8 FOR ROAD TYPICAL SECTIONS.

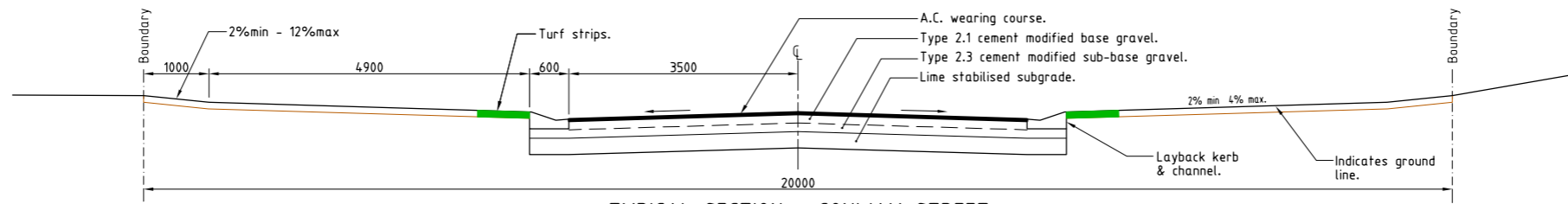
Issue	Description	Date
B	ISSUED FOR AS CONSTRUCTED.	14/12/2016
A	AMENDED FOR CONSTRUCTION.	1/10/2014
P2	PRELIMINARY - NOT FOR CONSTRUCTION - AMENDED TO COUNCIL'S REQUIREMENTS.	14/05/2014
P1	PRELIMINARY - NOT FOR CONSTRUCTION - ISSUED FOR OPERATIONAL WORKS APPROVAL.	18/12/2013

Drawn	In Association With	Drawing Number	Issue
LJ Date 18/12/2013	<b>BUSHLAND GROVE PTY LTD</b>		
Checked P.A. Approved MS	<b>BUSHLAND GROVE ESTATE STAGE 11, 28 ALLOTMENT RESIDENTIAL SUBDIVISION, MOUNT LOW</b>		

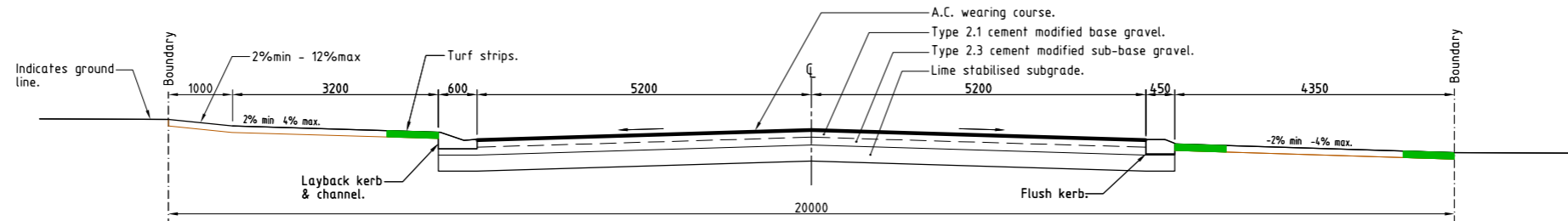
\* - Indicates as constructed information.



TYPICAL SECTION - BARNFIELD STREET

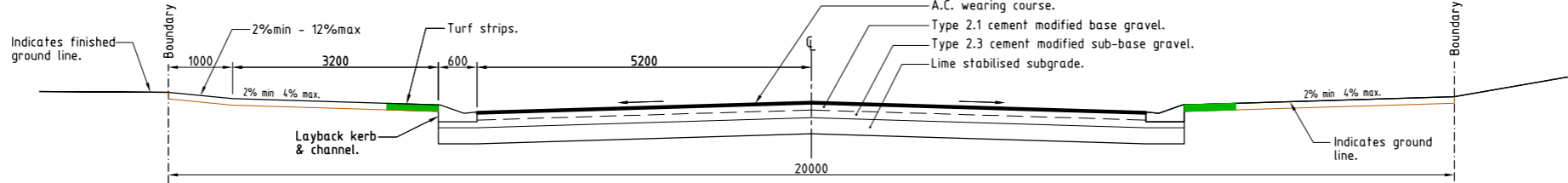


TYPICAL SECTION - CONWAY STREET



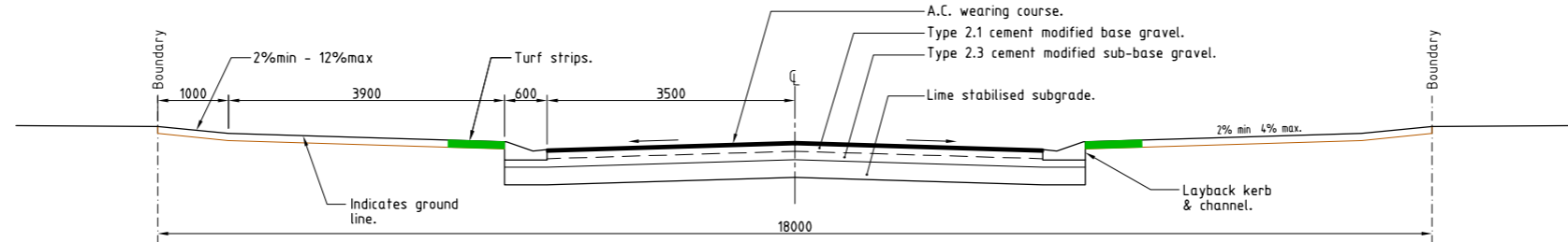
TYPICAL SECTION - FREMONT STREET

Ch 820.000 - Ch 858.194



TYPICAL SECTION - FREMONT STREET

Ch 810.000 - Ch 818.200



TYPICAL SECTION - FREMONT STREET

Ch 692.071 - Ch 780.000

**ACCEPTED  
AS CONSTRUCTED**

**AS CONSTRUCTED**  
Northern Consulting Engineers hereby certify that the works detailed on this drawing have been constructed to the dimensions and levels detailed.

*Andrew Ian Wallace* Date: **15/12/2016**  
Andrew Ian Wallace

REAL PROPERTY DESCRIPTION  
Lot 900 on SP262005  
Parish of BOHLE  
County of ELPHINSTONE  
Conway Street - Mount Low

\* - Indicates as constructed information.

LEVEL DATUM A.H.D. (Der)  
Horizontal Datum GDA' 94 Zone 55  
Refer PM 193518 RL, 8.195  
Bolt and washer in kerb  
FREMONT STREET.



THE ORIGINAL OF THIS DOCUMENT IS COMPLETED TO THE SCALE NOTED.  
AS REPRODUCTION CAN DISTORT SIZE & SHAPE USE ONLY THE  
DIMENSIONS PROVIDED ON ARCHITECTURAL &/OR ENGINEERING DRAWINGS.  
VERIFY DIMENSIONS ON SITE BEFORE CONSTRUCTION.

All work is carried out in accordance with LOCAL AUTHORITIES standard details.



Civil & Structural Engineers  
50 Punari Street, Currajong 4812  
Phone: [07] 4725 5550 Fax: [07] 4725 5850  
Email: mail@nceng.com.au  
Milton Messer & Associates Pty. Ltd.  
ACN 100 817 356

B	ISSUED FOR AS CONSTRUCTED.	14/12/2016
A	AMENDED FOR CONSTRUCTION.	1/10/2014
P2	PRELIMINARY - NOT FOR CONSTRUCTION - AMENDED TO COUNCIL'S REQUIREMENTS.	14/05/2014
P1	PRELIMINARY - NOT FOR CONSTRUCTION - ISSUED FOR OPERATIONAL WORKS APPROVAL.	18/12/2013
Issue	Description	Date

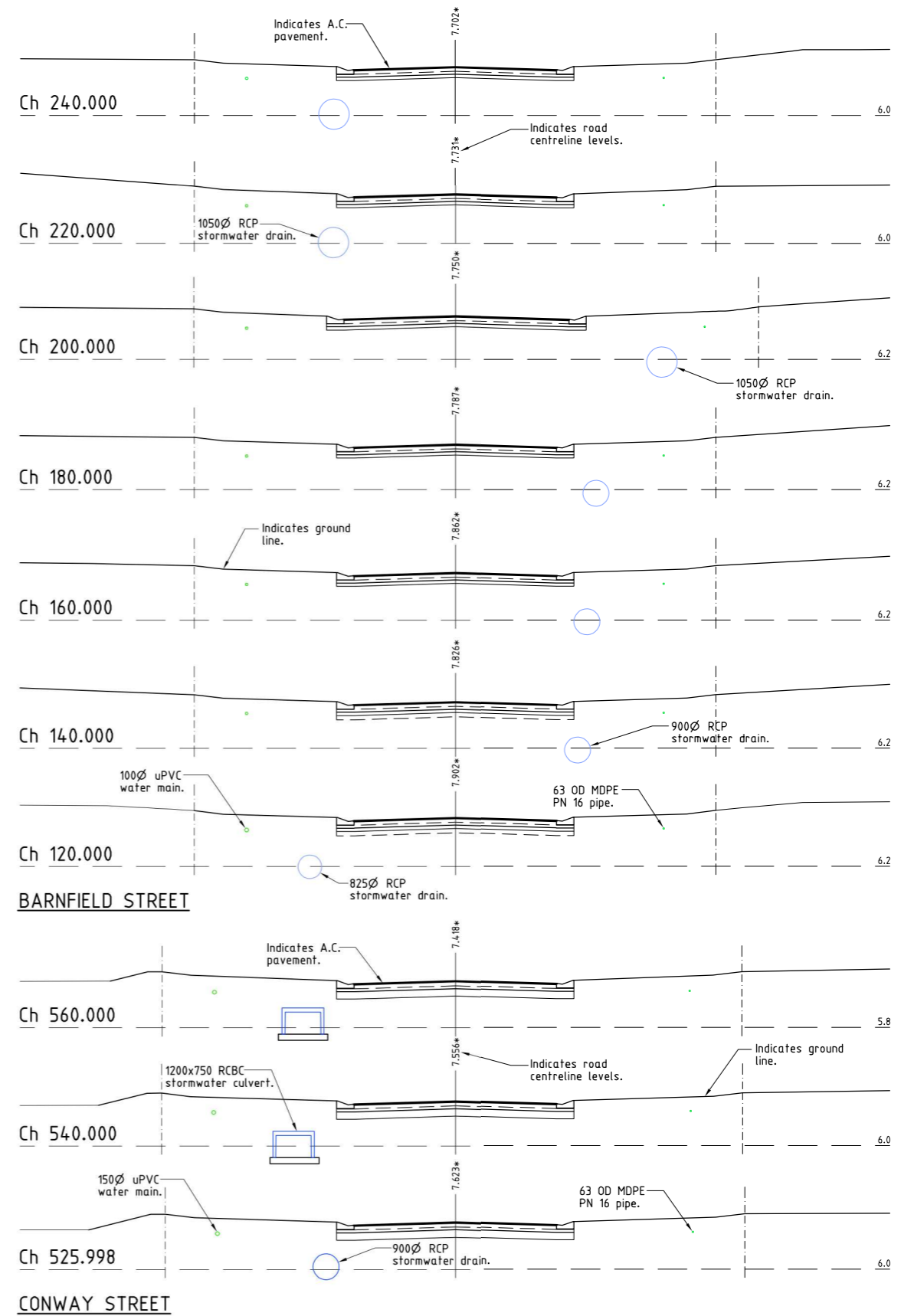
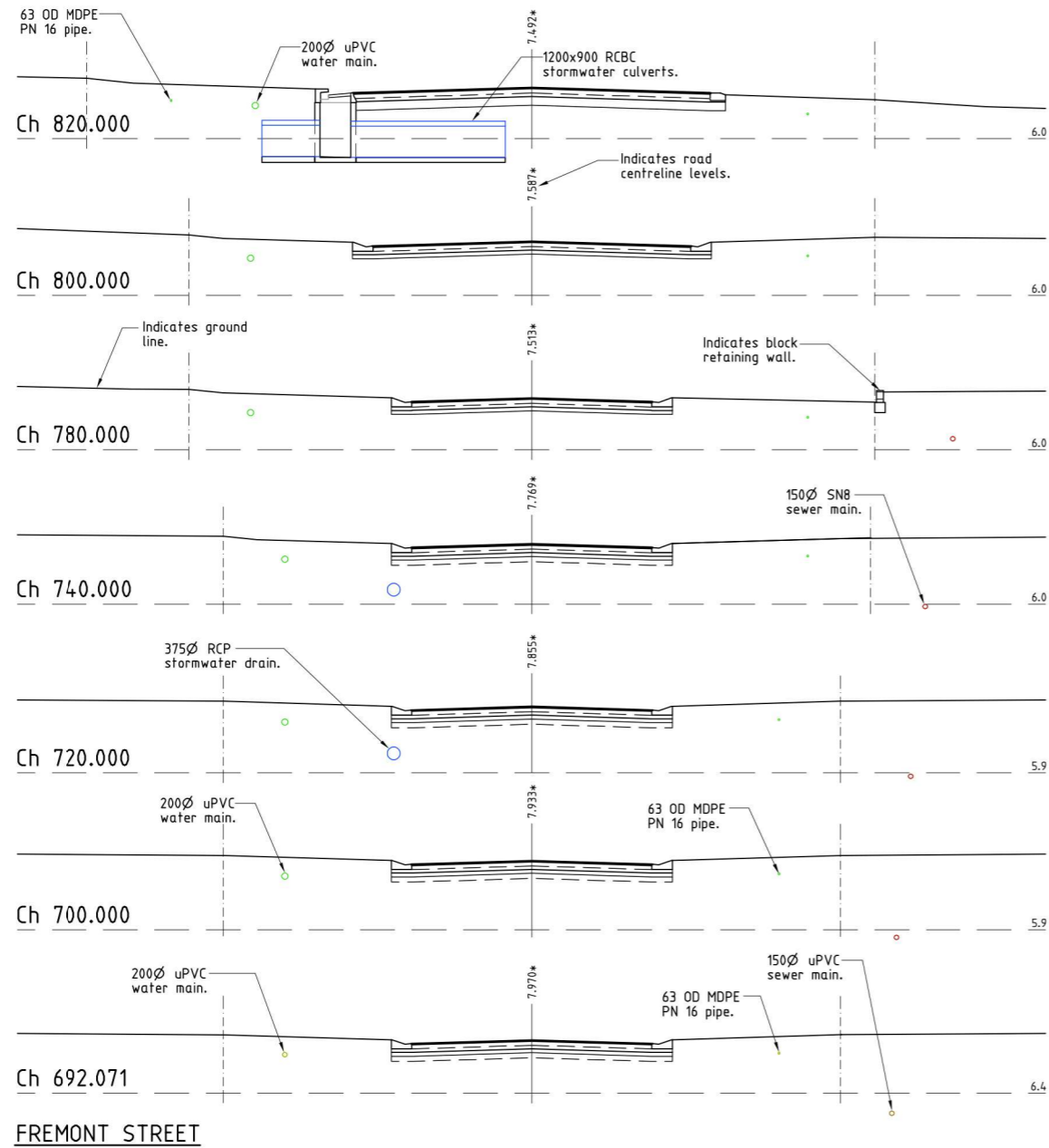
Drawn LJ Date 18/12/2013	In Association With <b>BUSHLAND GROVE PTY LTD</b>	<b>ROAD TYPICAL SECTIONS</b>
Checked D.A. Approved ALS	<b>BUSHLAND GROVE ESTATE STAGE 11, 28 ALLOTMENT RESIDENTIAL SUBDIVISION, MOUNT LOW</b>	
COPYRIGHT ©		Drawing Number <b>TUR0811/8</b>
		Issue <b>B</b>

**AS CONSTRUCTED**

Rowlands Surveys Pty Ltd (ACN 010 025 260) hereby certify that the works detailed on this drawing denoted \* have been constructed to the dimensions and levels shown.

Laurence John Nolan  
Director/Registered Surveyor  
Date: 15/12/2016

**ACCEPTED  
AS CONSTRUCTED**



**CROSS SECTIONS**

All work is carried out in accordance with LOCAL AUTHORITIES standard details.

REFER TO DRAWING TUR0811/8 FOR ROAD TYPICAL SECTIONS.

B	ISSUED FOR AS CONSTRUCTED.	14/12/2016
A	AMENDED FOR CONSTRUCTION.	1/10/2014
P2	PRELIMINARY - NOT FOR CONSTRUCTION - AMENDED TO COUNCIL'S REQUIREMENTS.	14/05/2014
P1	PRELIMINARY - NOT FOR CONSTRUCTION - ISSUED FOR OPERATIONAL WORKS APPROVAL.	18/12/2013

Issue	Description	Date
-------	-------------	------

REAL PROPERTY DESCRIPTION  
Lot 900 on SP262005  
Parish of BOHLE  
County of ELPHINSTONE  
Conway Street - Mount Low

LEVEL DATUM A.H.D. (Der)  
Horizontal Datum GDA' 94 Zone 55  
Refer PM 193518 RL, 8,195  
Bolt and washer in kerb  
FREMONT STREET.



THE ORIGINAL OF THIS DOCUMENT IS COMPLETED TO THE SCALE NOTED. AS REPRODUCTION CAN DISTORT SIZE & SHAPE USE ONLY THE DIMENSIONS PROVIDED ON ARCHITECTURAL &/OR ENGINEERING DRAWINGS. VERIFY DIMENSIONS ON SITE BEFORE CONSTRUCTION.

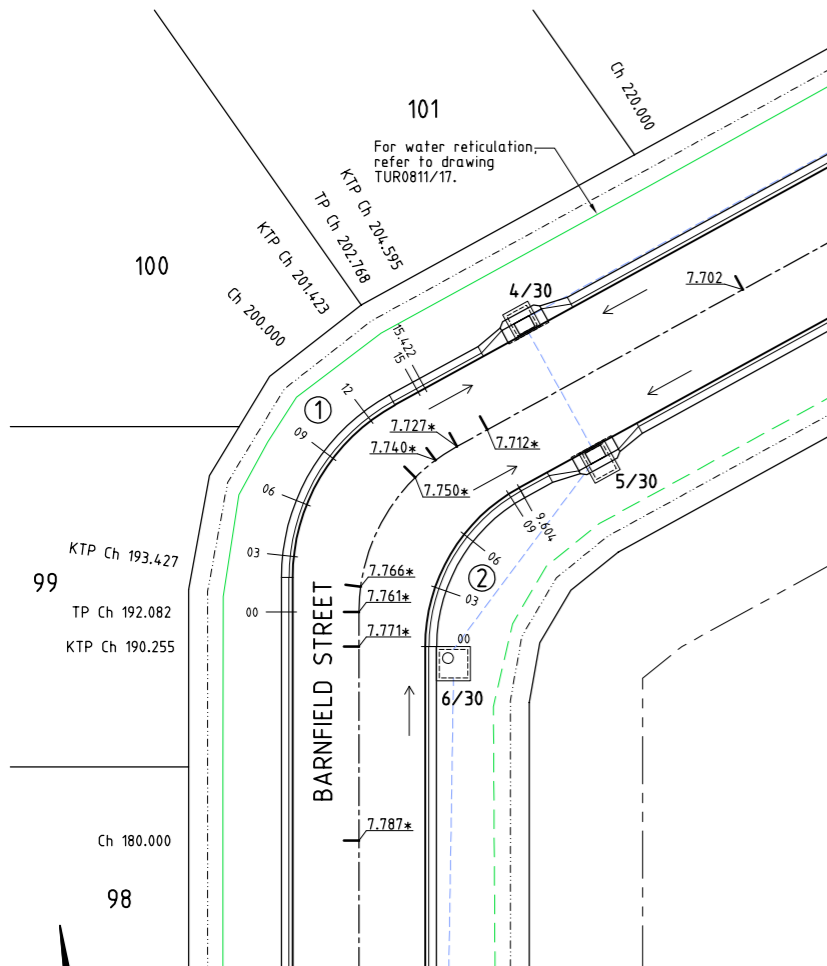


Civil & Structural Engineers  
50 Punari Street, Currajong 4812  
Phone: [07] 4725 5550 Fax: [07] 4725 5850  
Email: mail@nceng.com.au  
Milton Messer & Associates Pty. Ltd.  
ACN 100 817 356

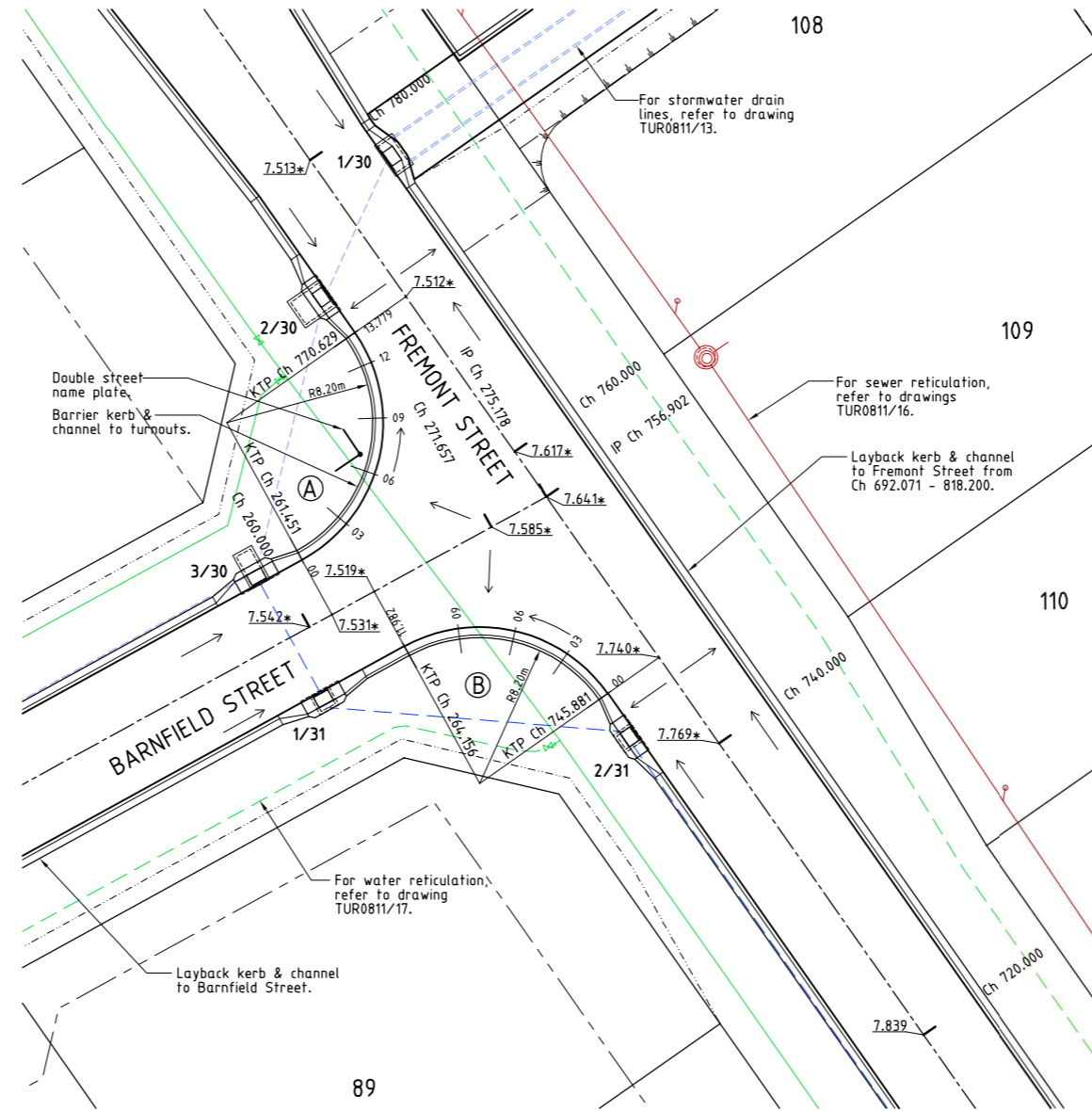
Drawn LJ	In Association With <b>BUSHLAND GROVE PTY LTD</b>	<b>ROAD CROSS SECTIONS</b>
Date 18/12/2013	<b>BUSHLAND GROVE ESTATE STAGE 11, 28 ALLOTMENT RESIDENTIAL SUBDIVISION, MOUNT LOW</b>	
Checked D.A		Drawing Number <b>TUR0811/9</b>
Approved [Signature]		Issue <b>B</b>
COPYRIGHT ©		

DATUM RL. 6.700						
BACK OF KERB LEVELS	7.736*	7.731*	7.723*	7.716*	7.708*	7.698*
PEGGED CHAINAGE	0.000	3.000	6.000	9.000	12.000	15.000

**KERB WIDENING 1**  
Scale 'B' - Horizontal  
Scale 'C' - Vertical



**CORNER PLAN**  
Scale 'A'



**INTERSECTION PLAN 1**  
Scale 'A'

DATUM RL. 6.700				
BACK OF KERB LEVELS	7.757*	7.738*	7.712*	7.699*
PEGGED CHAINAGE	0.000	3.000	6.000	9.000

**KERB WIDENING 2**  
Scale 'B' - Horizontal  
Scale 'C' - Vertical

- LEGEND**
- 12.000\* - As constructed surface level.
  - - Stormwater flow arrow.
  - - Top of batter.
  - - Toe of batter.
  - - Change of grade.
  - - uPVC water main.
  - - Poly water main.
  - - Stormwater drain line.
  - - Sewer manhole.
  - - Sewer main.
  - - Stormwater drain line.

**AS CONSTRUCTED**  
Rowlands Surveys Pty Ltd (ACN 010 025 260) hereby certify that the works detailed on this drawing, denoted \*, have been constructed to the dimensions and levels shown.

Signature: Laurence John Nolan  
Director/Registered Surveyor  
Date: 15/12/2016

DATUM RL. 6.700					
BACK OF KERB LEVELS	7.544*	7.525*	7.519*	7.518*	7.505*
PEGGED CHAINAGE	0.000	3.000	6.000	9.000	12.000

**TURNOUT A**  
Scale 'B' - Horizontal  
Scale 'C' - Vertical

DATUM RL. 6.700				
BACK OF KERB LEVELS	7.735*	7.703*	7.616*	7.554*
PEGGED CHAINAGE	0.000	3.000	6.000	9.000

**TURNOUT B**  
Scale 'B' - Horizontal  
Scale 'C' - Vertical

**ACCEPTED AS CONSTRUCTED**

**REAL PROPERTY DESCRIPTION**  
Lot 900 on SP262005  
Parish of BOHLE  
County of ELPHINSTONE  
Conway Street - Mount Low

\* - Indicates as constructed information.

LEVEL DATUM A.H.D. (Der)  
Horizontal Datum GDA' 94 Zone 55  
Refer PM 193518 RL. 8.195  
Bolt and washer in kerb  
FREMONT STREET.

Scale 'A'  
Scale 'B'  
Scale 'C'

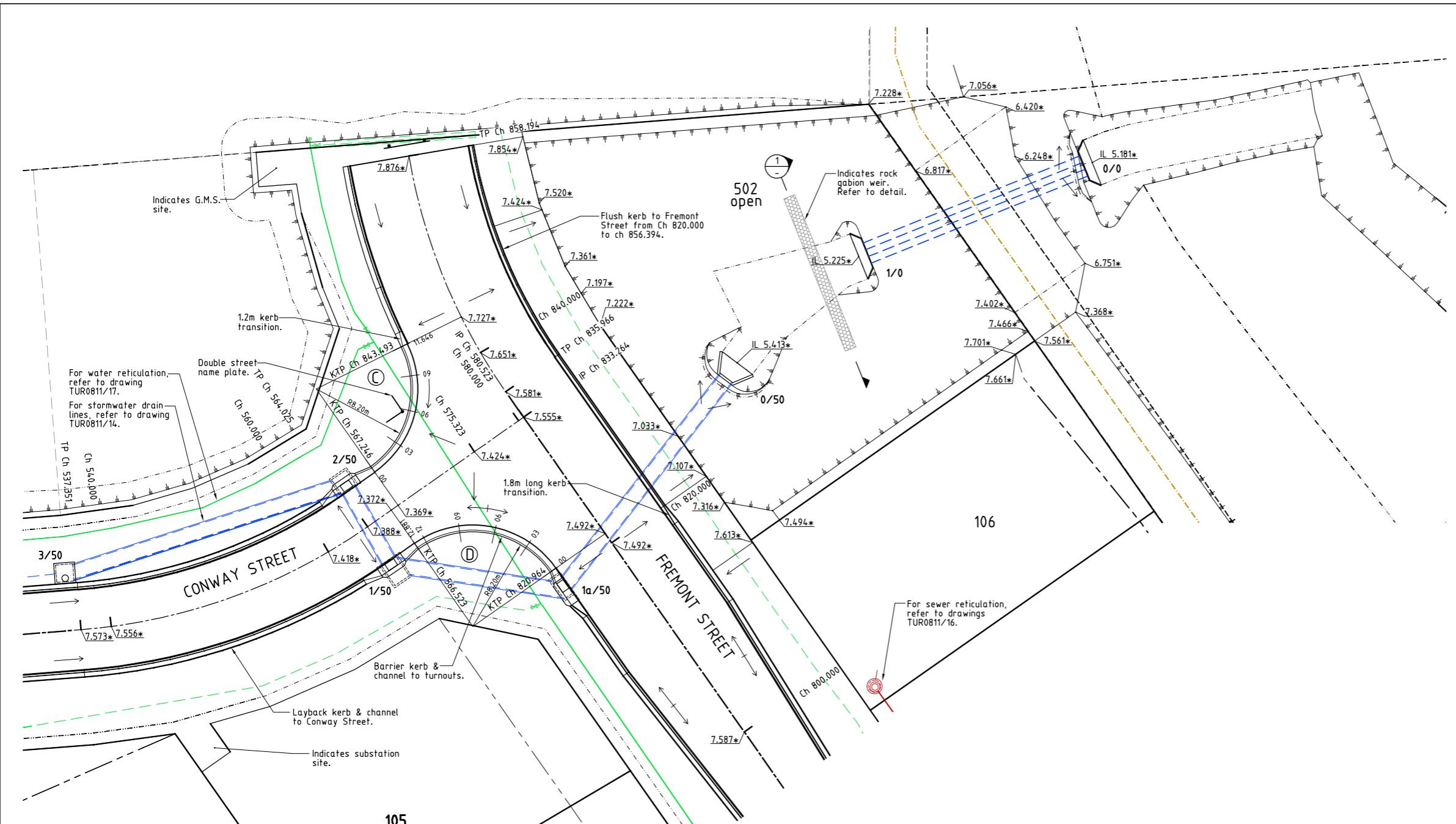
THE ORIGINAL OF THIS DOCUMENT IS COMPLETED TO THE SCALE NOTED. AS REPRODUCTION CAN DISTORT SIZE & SHAPE USE ONLY THE DIMENSIONS PROVIDED ON ARCHITECTURAL &/OR ENGINEERING DRAWINGS. VERIFY DIMENSIONS ON SITE BEFORE CONSTRUCTION.

All work is carried out in accordance with LOCAL AUTHORITIES standard details.



Civil & Structural Engineers  
50 Punari Street, Currajong 4812  
Phone: [07] 4725 5550 Fax: [07] 4725 5850  
Email: mail@nceng.com.au  
Milton Messer & Associates Pty. Ltd.  
ACN 100 817 356

C	ISSUED FOR AS CONSTRUCTED.	14/12/2016
B	SEWER AND LOT LEVELS AMENDED.	17/03/2016
A	AMENDED FOR CONSTRUCTION.	1/10/2014
P1	PRELIMINARY - NOT FOR CONSTRUCTION - ISSUED FOR OPERATIONAL WORKS APPROVAL.	18/12/2013
Issue	Description	Date
Drawn LJ Date 18/12/2013 Checked D.A. Approved M.S. COPYRIGHT ©	In Association With <b>BUSHLAND GROVE PTY LTD</b> BUSHLAND GROVE ESTATE STAGE 11, 28 ALLOTMENT RESIDENTIAL SUBDIVISION, MOUNT LOW	<b>INTERSECTION PLAN 1 &amp; CORNER PLAN</b> Drawing Number <b>TUR0811/10</b> Issue <b>C</b>

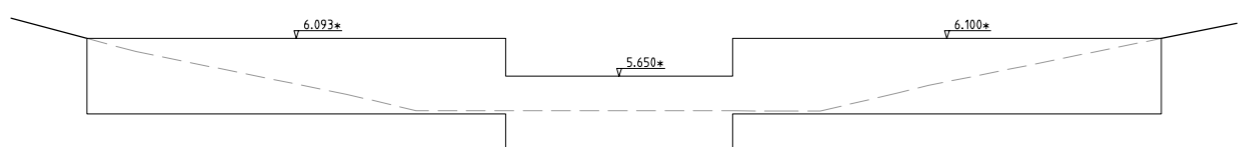


- LEGEND**
- $\overline{12.000*}$  - As constructed surface level.
  - $\underline{11.200*}$  - As constructed invert level.
  - $\rightarrow$  - Stormwater flow arrow.
  - - - - - Existing RP boundary.
  - - - - - Top of batter.
  - - - - - Toe of batter.
  - - - - - Change of grade.
  - - - - - uPVC water main.
  - - - - - Poly water main.
  - - - - - Stormwater drain line.
  - $\odot$  - Sewer manhole.
  - - - - - Sewer main.
  - - - - - Sewer rising main.

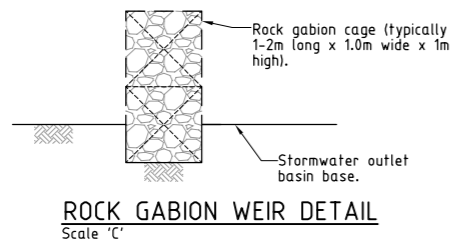
**AS CONSTRUCTED**  
 Rowlands Surveys Pty Ltd (ACN 010 025 260) hereby certify that the works detailed on this drawing, denoted \*, have been constructed to the dimensions and levels shown.

*Laurence John Nolan*  
 Director/Registered Surveyor  
 Date: 15/12/2016

**LAYOUT PLAN**  
 Scale 'A'



**SECTION 1**  
 Scale 'C'



DATUM RL. 6.500

BACK OF KERB LEVELS	7.379*	7.393*	7.440*	7.546*	7.655*
PEGGED CHAINAGE	0.000	3.000	6.000	9.000	11.646

Indicates back of kerb.

200Ø uPVC water main.

**TURNOUT C**  
 Scale 'B' - Horizontal  
 Scale 'D' - Vertical

DATUM RL. 6.500

BACK OF KERB LEVELS	7.444*	7.479*	7.484*	7.592*	7.683*	7.781*
PEGGED CHAINAGE	0.000	3.000	6.000	9.000	12.000	12.881

Indicates back of kerb.

200Ø uPVC water main.

**TURNOUT D**  
 Scale 'B' - Horizontal  
 Scale 'D' - Vertical

**ACCEPTED AS CONSTRUCTED**

All work is carried out in accordance with LOCAL AUTHORITIES standard details.

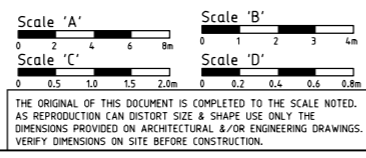


Civil & Structural Engineers  
 50 Punari Street, Currajong 4812  
 Phone: [07] 4725 5550 Fax: [07] 4725 5850  
 Email: mail@nceng.com.au  
 Milton Messer & Associates Pty. Ltd.  
 ACN 100 817 356

B A P1	ISSUED FOR AS CONSTRUCTED. AMENDED FOR CONSTRUCTION. PRELIMINARY - NOT FOR CONSTRUCTION - ISSUED FOR OPERATIONAL WORKS APPROVAL.	14/12/2016 1/10/2014 18/12/2013
Issue	Description	Date
Drawn LJ Date 18/12/2013 Checked D.A. Approved ALS COPYRIGHT ©	In Association With <b>BUSHLAND GROVE PTY LTD</b> BUSHLAND GROVE ESTATE STAGE 11, 28 ALLOTMENT RESIDENTIAL SUBDIVISION, MOUNT LOW	<b>INTERSECTION PLAN 2 &amp; STORMWATER OUTLET BASIN</b>
Drawing Number	Issue	
TUR0811/11	B	

**REAL PROPERTY DESCRIPTION**  
 Lot 900 on SP262005  
 Parish of BOHLE  
 County of ELPHINSTONE  
 Conway Street - Mount Low

LEVEL DATUM A.H.D. (Der)  
 Horizontal Datum GDA' 94 Zone 55  
 Refer PM 193518 RL. 8.195  
 Bolt and washer in kerb  
 FREMONT STREET.



\* - Indicates as constructed information.