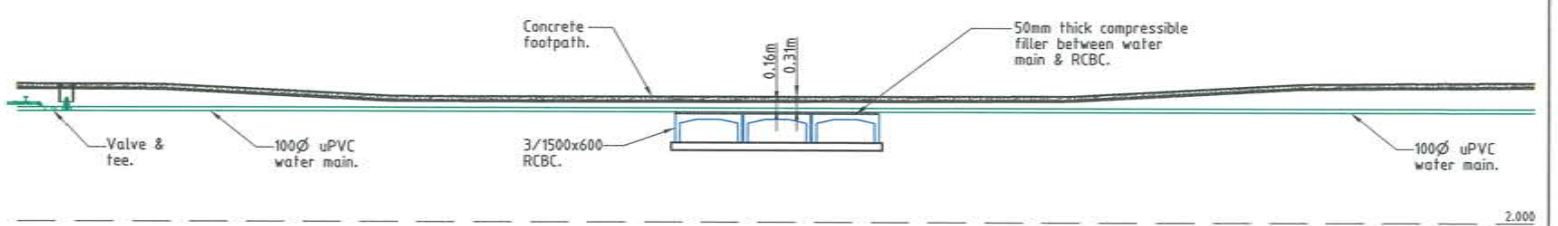
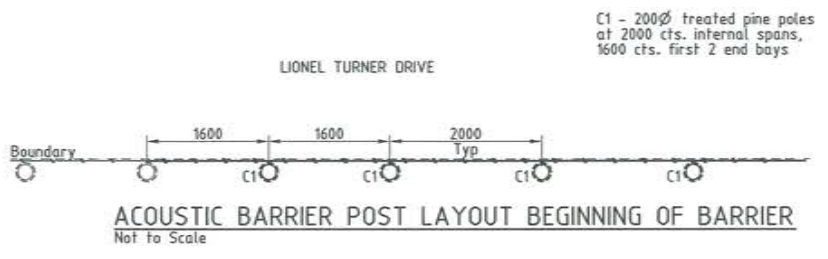


ELEVATION 1  
5

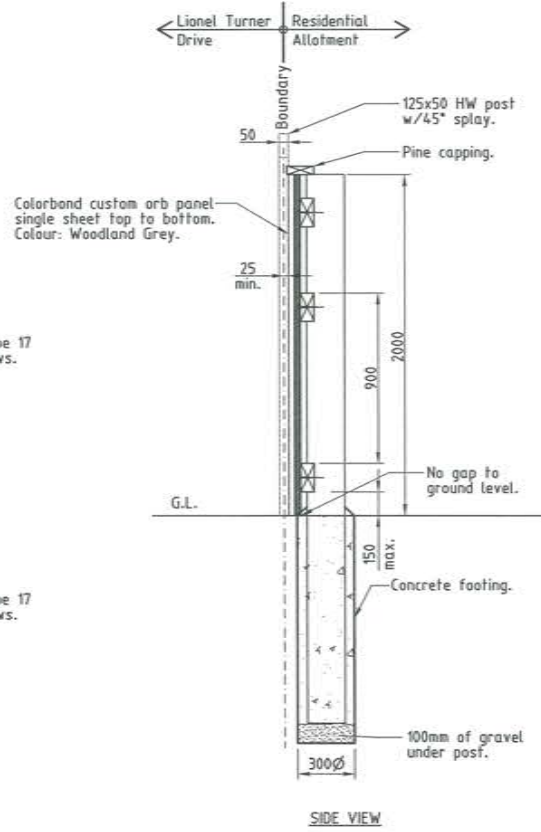


ELEVATION 2  
5

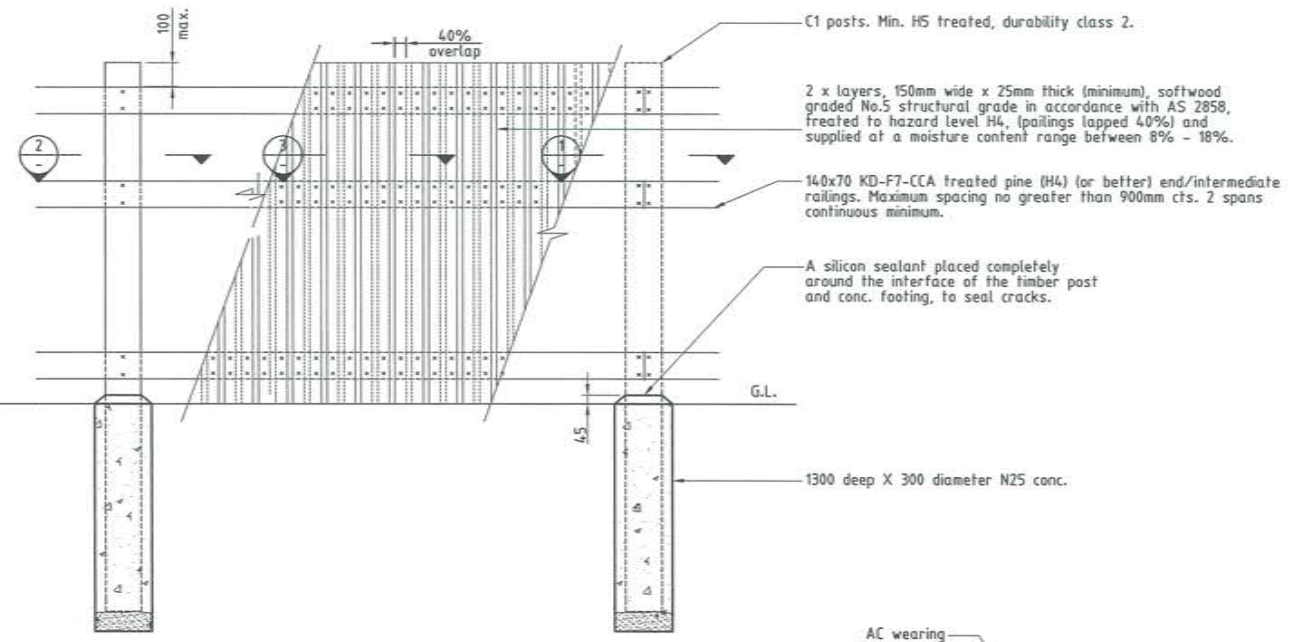
WATER MAIN / CULVERT ELEVATIONS  
Scale 'A'



ACOUSTIC BARRIER POST LAYOUT BEGINNING OF BARRIER  
Not to Scale



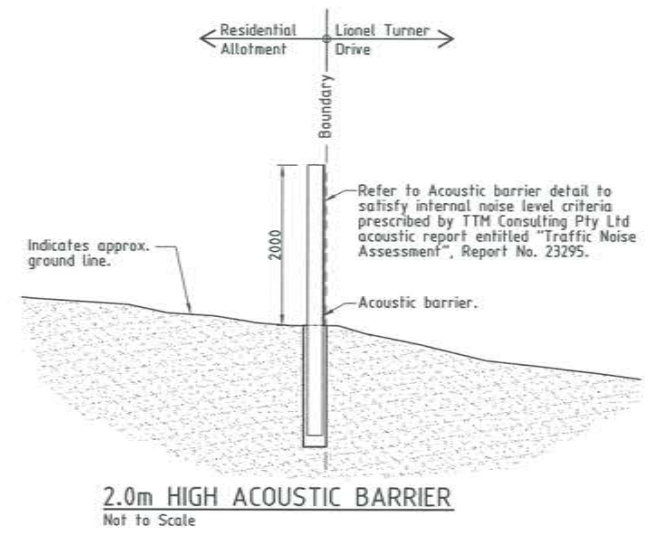
SIDE VIEW



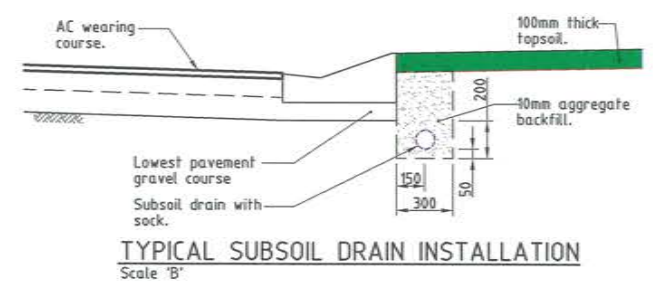
FRONT VIEW

ACOUSTIC BARRIER DETAIL  
Not to Scale

**ACCEPTED AS CONSTRUCTED**



2.0m HIGH ACOUSTIC BARRIER  
Not to Scale



TYPICAL SUBSOIL DRAIN INSTALLATION  
Scale 'B'

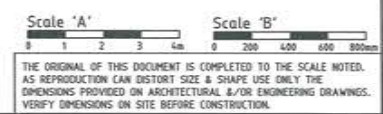
**AS CONSTRUCTED**  
Northern Consulting Engineers hereby certify that the works detailed on this drawing have been constructed to the dimensions and levels detailed.  
Derek Robert Conley Saw  
Date: 1-6-15



REAL PROPERTY DESCRIPTION  
Lot 902 on SP 256043  
Parish of BOHLE  
County of ELPHINSTONE  
Salonika Circuit - Bushland Beach

In Association with:-  
**ROWLANDS SURVEYS PTY LTD**  
22 GORDEN STREET  
GARbutt. 4814  
Ph. (07)47755077

LEVEL DATUM A.H.D.  
Horizontal Datum GDA '94 Zone 55  
Refer P.M. 174430 RL. 4.820  
Bolt & washer in kerb.  
Cor HILLOCK CR. & GLENDOWER ST.  
BASE SURVEY  
Rowlands Surveys (42823/05)  
TRUNCATED COORDINATES  
E 0.000, N 0.000  
EQUIVALENT TO  
E 460000, N 7800000



All work has been carried out in accordance with LOCAL AUTHORITIES standard details.

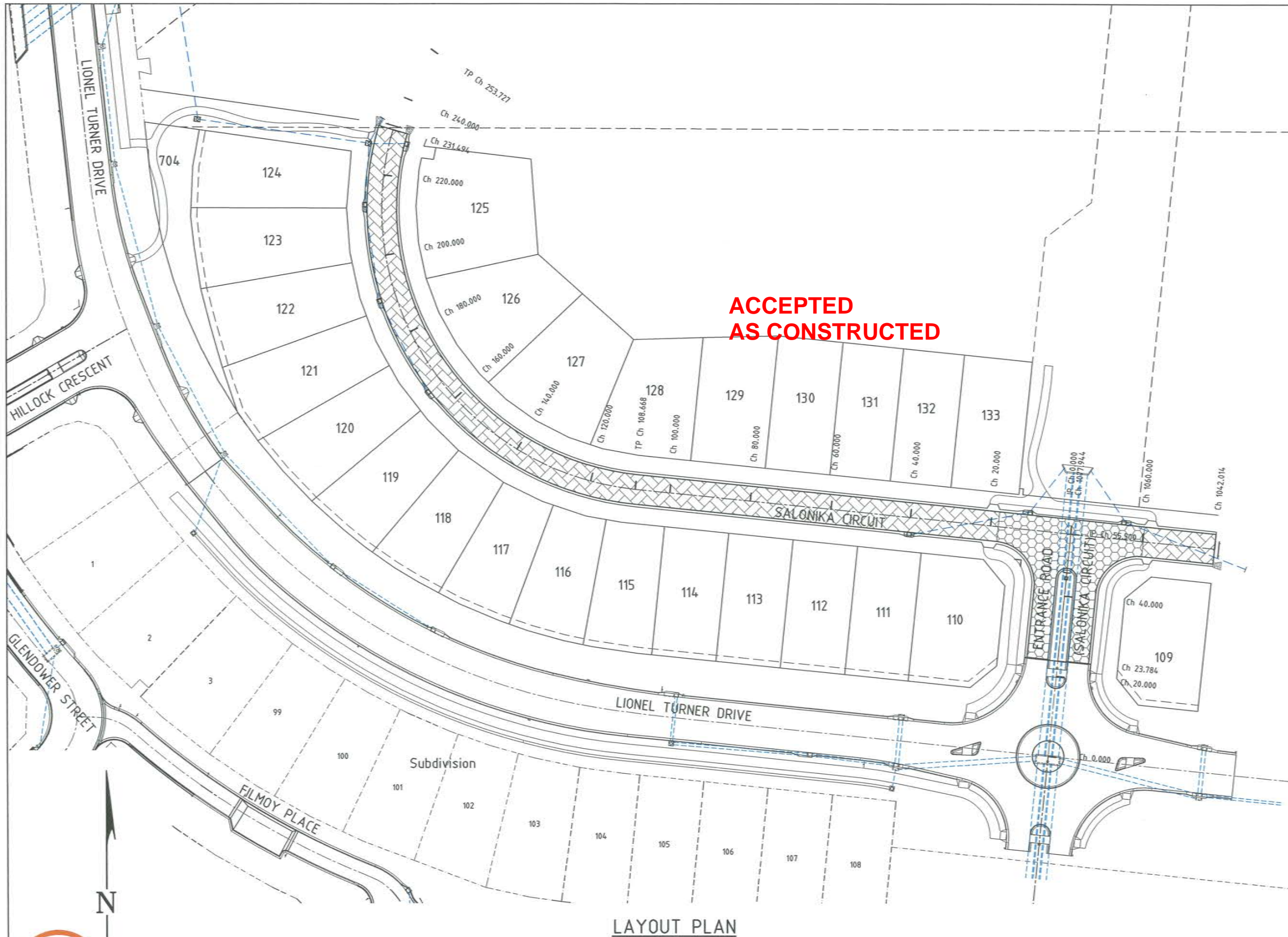


**NORTHERN CONSULTING** engineers  
Civil & Structural Engineers  
50 Punari Street, Currarong 4812  
Phone: [07] 4725 5550 Fax: [07] 4725 5850  
Email: mail@nceng.com.au  
Milton Messer & Associates Pty. Ltd.  
ACN 100 817 356

Issue	Description	Date
B	AMENDED TO AS CONSTRUCTED.	29/05/2015
A	ISSUED FOR TENDER / CONSTRUCTION.	15/09/2014
P2	PRELIMINARY - NOT FOR CONSTRUCTION - ISSUED FOR OPW APPROVAL.	28/03/2013
P1	PRELIMINARY - NOT FOR CONSTRUCTION - ISSUED FOR CLIENT REVIEW AND APPROVAL ONLY.	19/03/2013

Drawn LJ	In Association With <b>SUNLAND GROUP LIMITED</b>	<b>CONSTRUCTION DETAILS</b>
Date 19/03/2013	<b>STAGE 5, 25 TRADITIONAL RESIDENTIAL LOT SUBDIVISION SALONIKA CIRCUIT BUSHLAND BEACH</b>	
Checked MRS	Drawing Number <b>SUNJ0005/14</b>	Issue <b>B</b>
Approved		
COPYRIGHT ©		



**LEGEND**

- RP boundary.
- Stormwater drain line.
- Stormwater drain line.

**PAVEMENT:-**

- Pavement Type 1.
- Pavement Type 2.

**PAVEMENT STRUCTURE:-**

**Type 1.**

- 30mm DG10 AC Prime
- 100mm Base Type 2.1 (min CBR80)
- 170mm Sub-base Type 2.3 (min CBR45)
- 250mm in-situ cement stabilised (2.0%) subgrade

**Type 2.**

- 40mm DG10 AC Prime
- 135mm Base Type 2.1 (min CBR80)
- 100mm Sub-base Type 2.3 (min CBR45)
- 140mm Lower Sub-base Type 2.5 (min CBR15)
- 250mm in-situ cement stabilised (2.0%) subgrade

**ACCEPTED AS CONSTRUCTED**

**AS CONSTRUCTED**

Northern Consulting Engineers hereby certify that the works detailed on this drawing have been constructed to the dimensions and levels detailed.

Derek Robert Valley Saw Date: 1-6-15

**LAYOUT PLAN**



**REAL PROPERTY DESCRIPTION**

Lot 902 on SP 256043  
Parish of BOHLE  
County of ELPHINSTONE  
Salonika Circuit - Bushland Beach

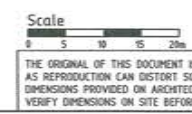
In Association with:-

**ROWLANDS SURVEYS PTY LTD**

22 GORDEN STREET  
GARBUTT. 4814  
Ph. (07)47755077

LEVEL DATUM A.H.D.  
Horizontal Datum GDA' 94 Zone 55  
Refer P.M. 174436 RL. 4.820  
Bolt & washer in kerb.  
Cnr HILLOCK CR. & GLENDOWER ST.

BASE SURVEY  
Rowlands Surveys (42823/05)  
TRUNCATED COORDINATES  
E 0.000, N 0.000  
EQUIVALENT TO  
E 460000, N 7800000



Scale

0 5 10 15 20m

THE ORIGINAL OF THIS DOCUMENT IS COMPLETED TO THE SCALE NOTED. AS REPRODUCTION CAN DISTORT SIZE & SHAPE USE ONLY THE DIMENSIONS PROVIDED ON ARCHITECTURAL &/OR ENGINEERING DRAWINGS. VERIFY DIMENSIONS ON SITE BEFORE CONSTRUCTION.

All work has been carried out in accordance with LOCAL AUTHORITIES standard details.



**NORTHERN CONSULTING** engineers

Civil & Structural Engineers  
50 Punari Street, Currajong 4812  
Phone: [07] 4725 5550 Fax: [07] 4725 5850  
Email: mail@nceng.com.au  
Milton Messer & Associates Pty. Ltd.  
ACN 100 817 356

Issue	Description	Date
B	AMENDED TO AS CONSTRUCTED.	29/05/2015
A	ISSUED FOR TENDER / CONSTRUCTION.	15/09/2014
P2	PRELIMINARY - NOT FOR CONSTRUCTION - ISSUED FOR OPW APPROVAL.	28/03/2013
P1	PRELIMINARY - NOT FOR CONSTRUCTION - ISSUED FOR CLIENT REVIEW AND APPROVAL ONLY.	19/03/2013

Drawn LJ Date 19/03/2013 Checked HAB Approved [Signature]	In Association With <b>SUNLAND GROUP LIMITED</b> STAGE 5, 25 TRADITIONAL RESIDENTIAL LOT SUBDIVISION SALONIKA CIRCUIT BUSHLAND BEACH	<b>PAVEMENT LAYOUT PLAN</b> Drawing Number <b>SUNJ0005/18</b>	Issue <b>B</b>
--	---	---	-------------------

