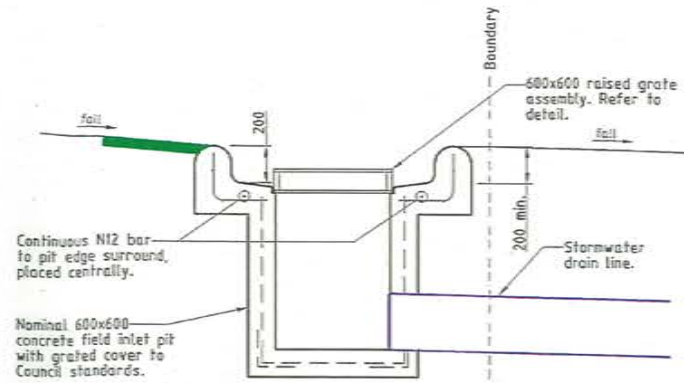
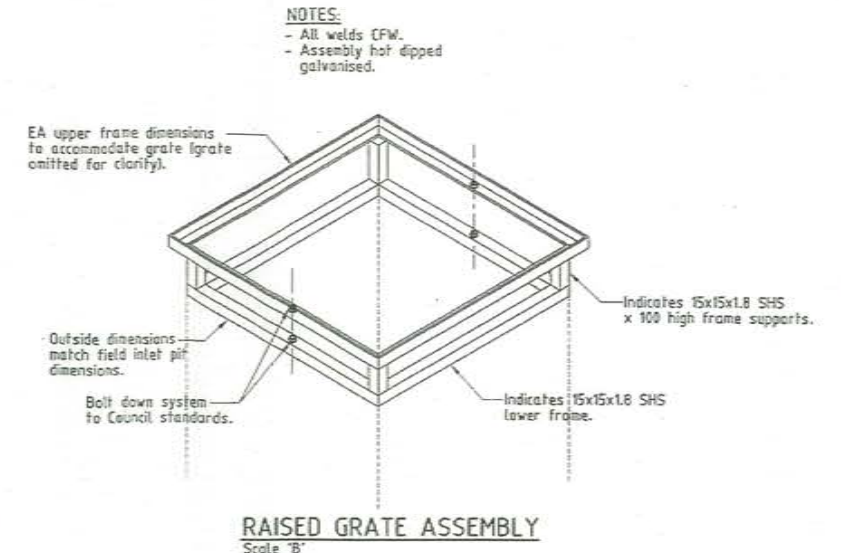


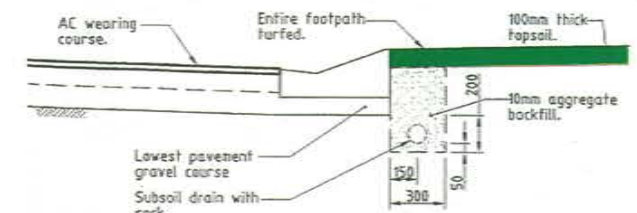
**FOOTPATH SERVICE ALLOCATIONS**  
Scale 'A'



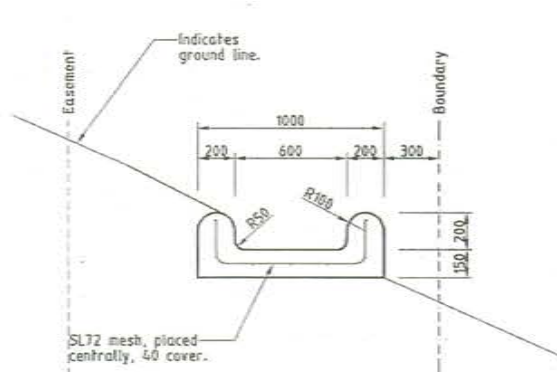
**600x600 (NOMINAL) CONCRETE FIELD INLET PIT (TYPICAL)**  
Scale 'A'



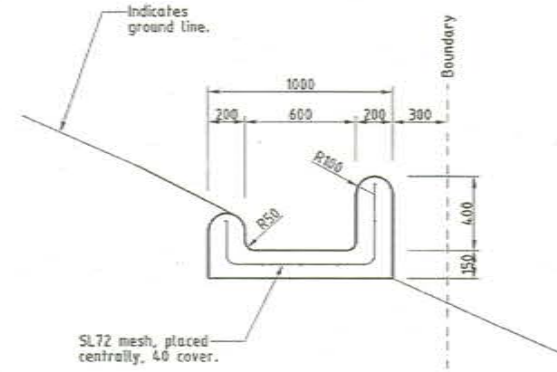
**RAISED GRATE ASSEMBLY**  
Scale 'B'



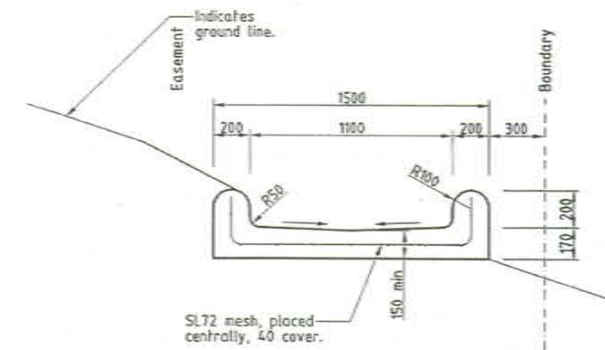
**TYPICAL SUBSOIL DRAIN INSTALLATION**  
Scale 'A'



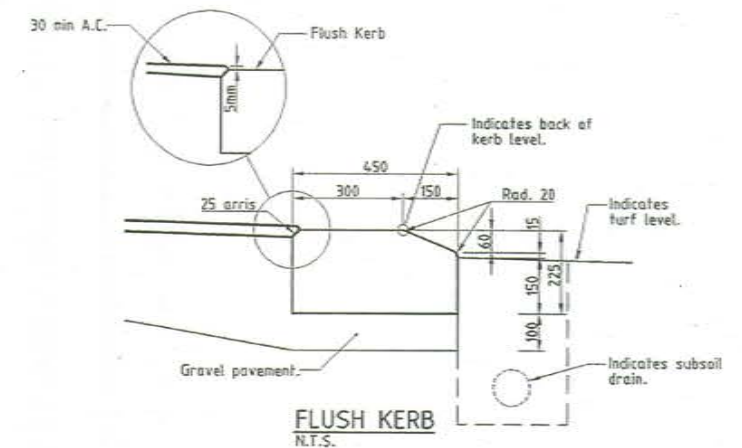
**600 CONCRETE CUT OFF DRAIN CD-A (TYPICAL)**  
Scale 'A'



**600 CONCRETE CUT OFF DRAIN CD-B (TYPICAL)**  
Scale 'A'

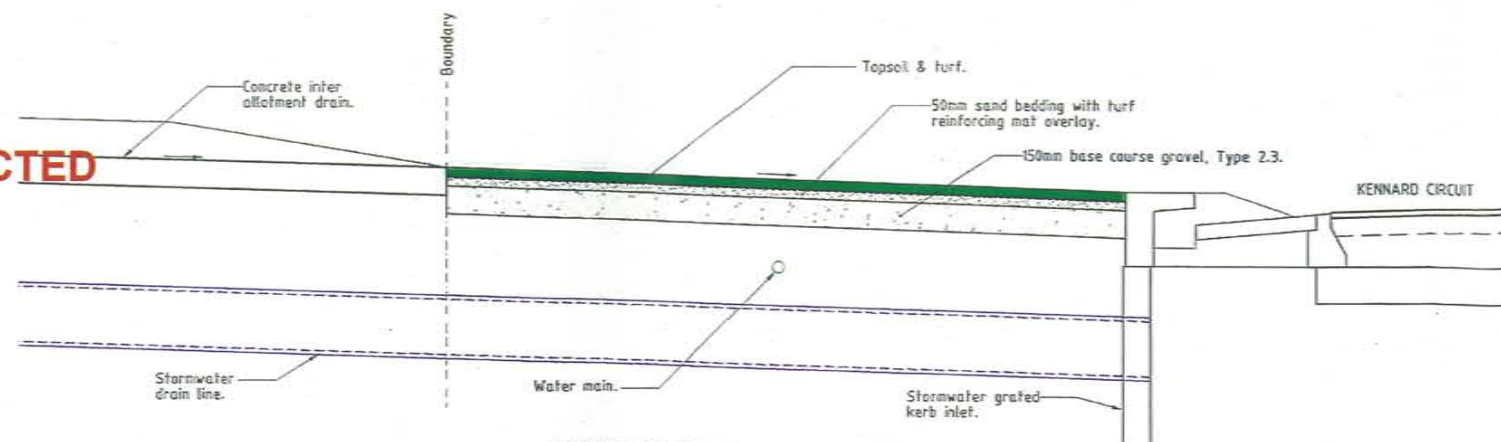


**1100 CONCRETE CUT OFF DRAIN (TYPICAL)**  
Scale 'A'



**FLUSH KERB**  
N.T.S.

**ACCEPTED  
AS CONSTRUCTED**



**FOOTPATH TURF REINFORCING (TYPICAL)**  
Scale 'A'

**AS CONSTRUCTED**  
Northern Consulting Engineers hereby certify that the works detailed on this drawing have been constructed to the dimensions and levels detailed.

John Loy *[Signature]* Date 05/09/12

Issue	Description	Date
B	AMENDED TO AS CONSTRUCTED.	05/09/2012
A	ISSUED FOR CONSTRUCTION.	03/12/2012
P2	PRELIMINARY - NOT FOR CONSTRUCTION - ISSUED FOR COUNCIL APPROVAL (OPWL).	23/08/2012
P1	PRELIMINARY - NOT FOR CONSTRUCTION - ISSUED FOR CLIENT REVIEW AND APPROVAL.	30/07/2012

Drawn DC	In Association With <b>SUNLAND GROUP LIMITED</b>	<b>CONSTRUCTION DETAILS</b>
Date 30/07/2012		
Checked HLS	<b>STAGE 4, 26 TRADITIONAL RESIDENTIAL LOT SUBDIVISION</b>	Drawing Number <b>SUNJ0004/20</b>
Approved HLS	<b>KENNARD CIRCUIT BUSHLAND BEACH</b>	Issue <b>B</b>
COPYRIGHT ©		



**SUNLAND GROUP**  
REAL PROPERTY DESCRIPTION  
Lot 902 & 903 on SP 239020  
Parish of BOHLE  
County of ELPHINSTONE



**ROWLANDS SURVEYS PTY LTD**  
22 GORDON STREET  
GARBUTT, 4014  
Ph. (07)47755077

LEVEL DATUM A.H.D.  
Horizontal Datum GDA' 94 Zone 55  
Refer P.M. 114438 RL L.820  
Bolt & washer in kerb.  
Cnr HILLOCK CR. & GLENDOWER ST.  
BASE SURVEY  
Rowlands Surveys (42822/05)  
TRUNCATED COORDINATES  
E 0.000, N 0.000  
EQUIVALENT TO  
E 460000, N 7800000

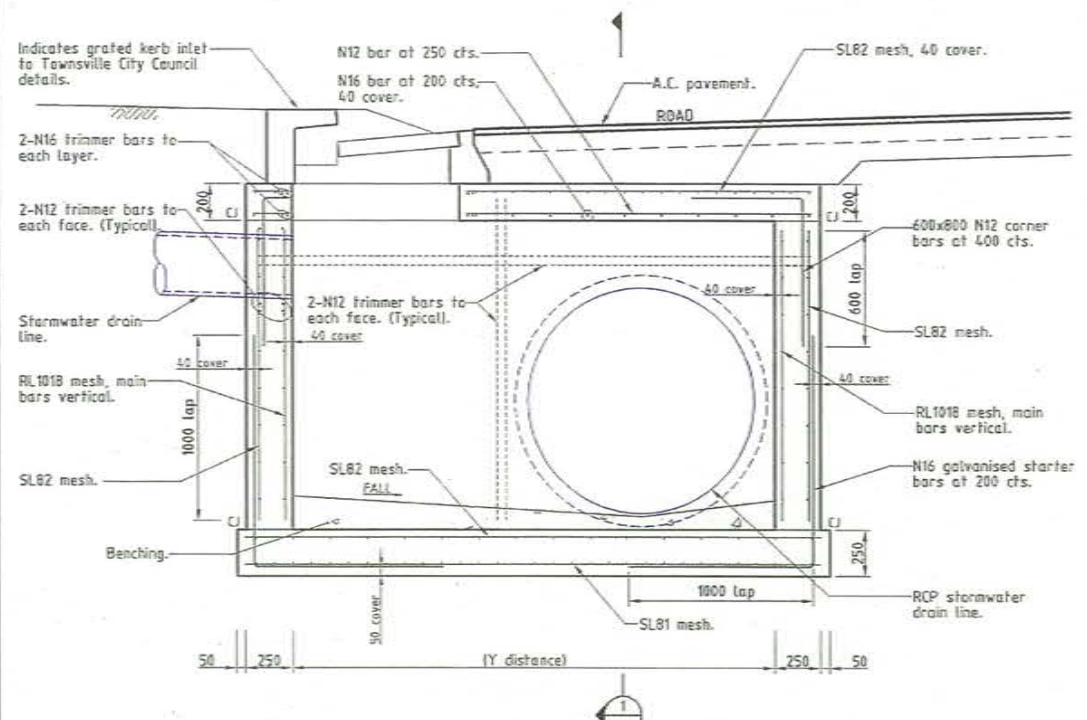
Scale 'A' 0 200 400 600 800  
Scale 'B' 0 100 200 300 400  
THE ORIGINAL OF THIS DOCUMENT IS COMPLETED TO THE SCALE NOTED.  
AS REPRODUCTION CAN DISTORT SIZE & SHAPE USE ONLY THE DIMENSIONS PROVIDED ON ARCHITECTURAL &/OR ENGINEERING DRAWINGS.  
VERIFY DIMENSIONS ON SITE BEFORE CONSTRUCTION.

All work has been carried out in accordance with LOCAL AUTHORITIES standard details.

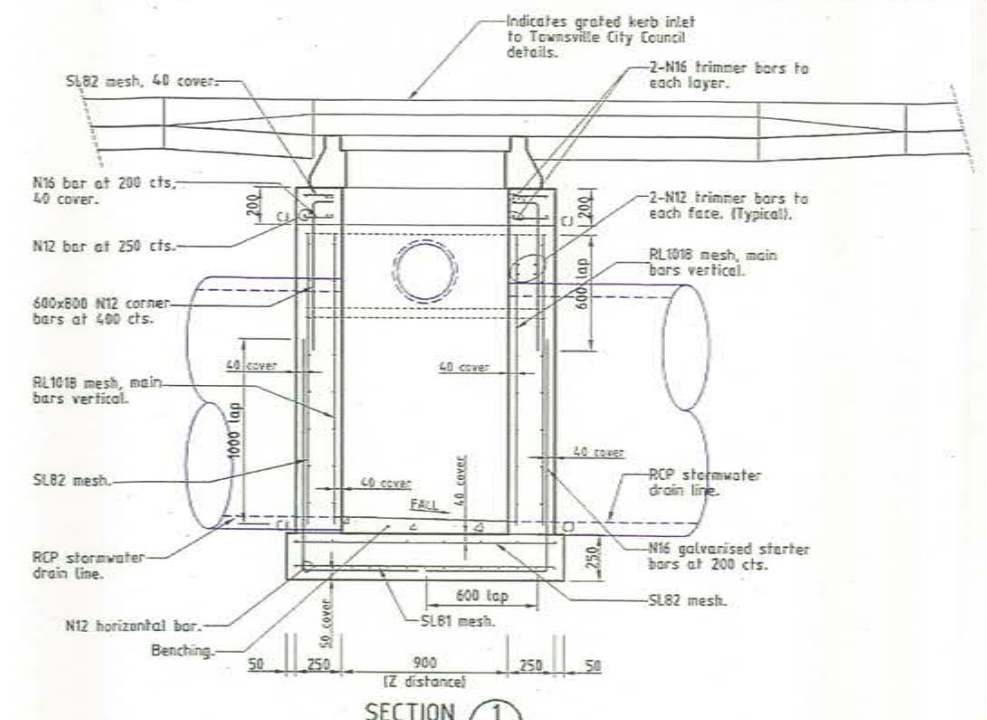


**NORTHERN CONSULTING**  
engineers

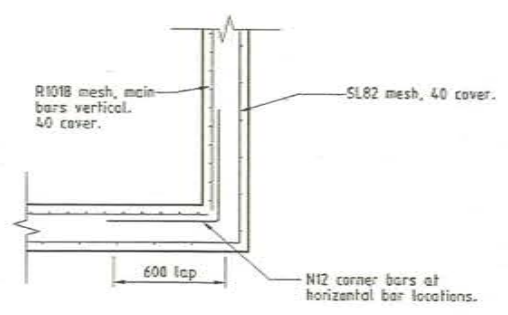
Civil & Structural Engineers  
50 Punaui Street, Currajong 4812  
Phone: [07] 4725 5550 Fax: [07] 4725 5850  
Email: mail@ncoeng.com.au  
Milton Messer & Associates Pty. Ltd.  
ACN 100 817 356



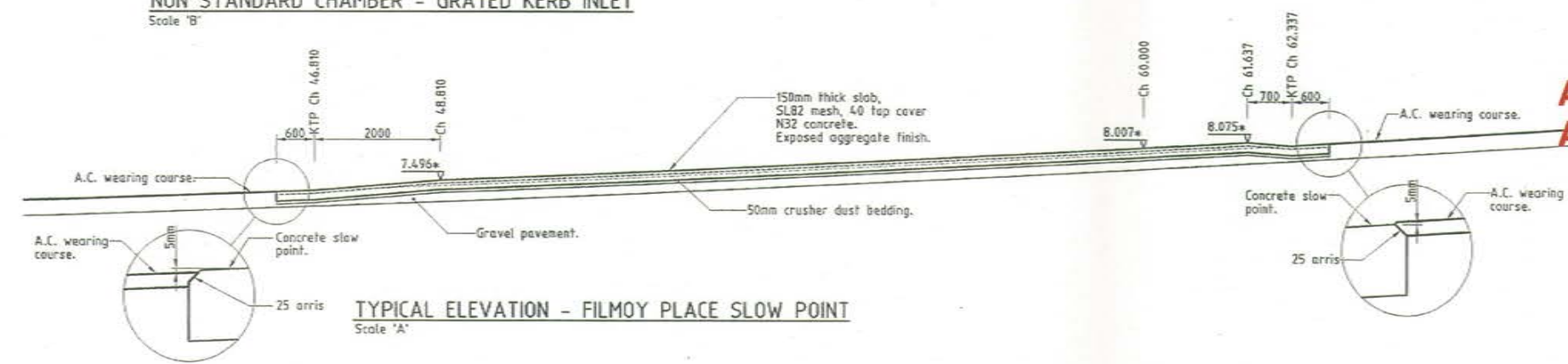
**NON STANDARD CHAMBER - GRATED KERB INLET**  
Scale 'B'



**SECTION 1**  
Scale 'B'

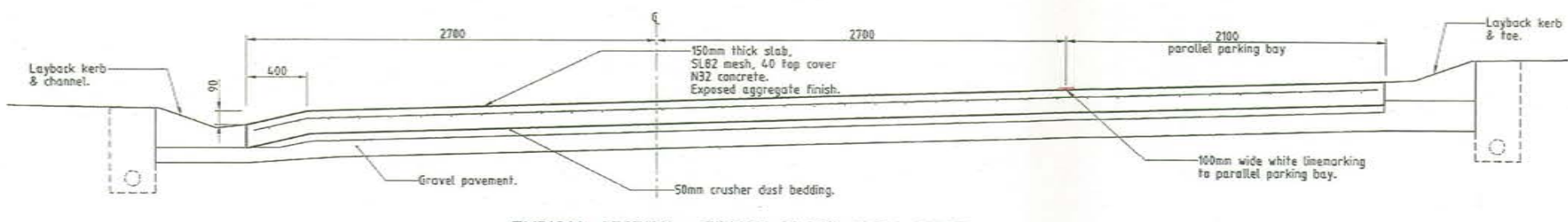


**CORNER REINFORCING DETAIL**  
Scale 'B'



**TYPICAL ELEVATION - FILMOY PLACE SLOW POINT**  
Scale 'A'

**ACCEPTED  
AS CONSTRUCTED**



**TYPICAL SECTION - FILMOY PLACE SLOW POINT**  
Scale 'B'

**AS CONSTRUCTED**  
Northern Consulting Engineers hereby certify that the works detailed in this drawing have been constructed to the dimensions and levels detailed.

John Lay Date: 05/09/13

**AS CONSTRUCTED**  
I Laurence John Nolan of ROWLANDS SURVEYS Pty. Ltd. hereby certify that this drawing accurately describes and records the nature and the location of the works depicted hereon as they have been constructed for the purposes of the development.

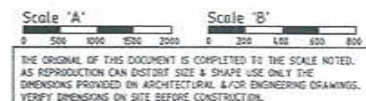
Laurence John Nolan Date: 5/9/13  
Director/Registered Surveyor



**REAL PROPERTY DESCRIPTION**  
Lot 902 & 903 on SP 239020  
Parish of BOHLE  
County of ELPINSTONE

In Association with:  
**ROWLANDS SURVEYS PTY LTD**  
22 GORDEN STREET  
GARBUTT. 4814  
Ph. (07)47755077

LEVEL DATUM A.R.D.  
Horizontal Datum GDA' 94 Zone 55  
Refer P.M. 174438 RL. 4.820  
Bolt & washer in kerb.  
Cor. HILLOCK CR. & GLENDOWER ST.  
BASE SURVEY  
Rowlands Surveys (42822/05)  
TRUNCATED COORDINATES  
E 0.000, N 0.000  
EQUIVALENT TO  
E 460000, N 780000



\* - Indicates as constructed information.

All work has been carried out in accordance with LOCAL AUTHORITIES standard details.



**NORTHERN CONSULTING**  
engineers  
Civil & Structural Engineers  
50 Punari Street, Currajong 4812  
Phone: (07) 4725 5550 Fax: (07) 4725 5850  
Email: mail@nceng.com.au  
Milton Messer & Associates Pty. Ltd  
ACN 100 817 956

B	AMENDED TO AS CONSTRUCTED.	05/09/2013
A	ISSUED FOR CONSTRUCTION.	09/12/2012
P2	PRELIMINARY - NOT FOR CONSTRUCTION - ISSUED FOR COUNCIL APPROVAL (OPWL)	23/08/2012
P1	PRELIMINARY - NOT FOR CONSTRUCTION - ISSUED FOR CLIENT REVIEW AND APPROVAL.	30/07/2012

Drawn DC	In Association With <b>SUNLAND GROUP LIMITED</b>	CONSTRUCTION DETAILS
Date 30/07/2012	STAGE 4, 26 TRADITIONAL RESIDENTIAL LOT SUBDIVISION	
Checked HFB	KENNARD CIRCUIT BUSHLAND BEACH	Drawing Number SUNJ0004/21
Approved HFB		Issue B