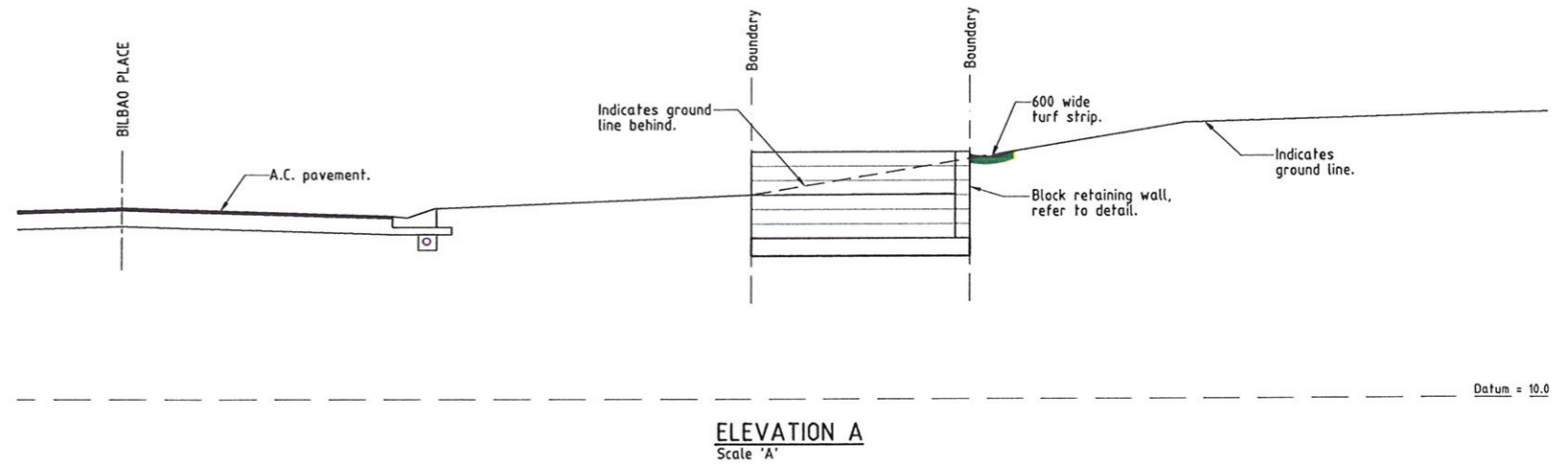
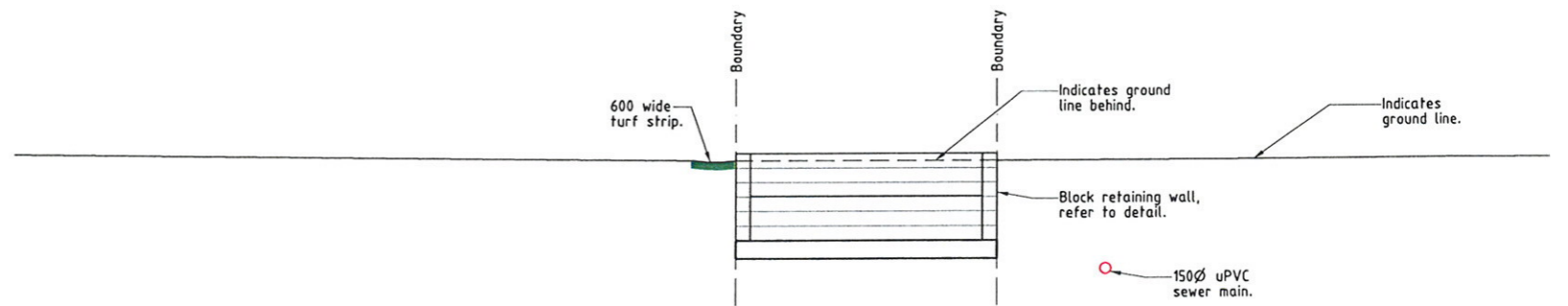


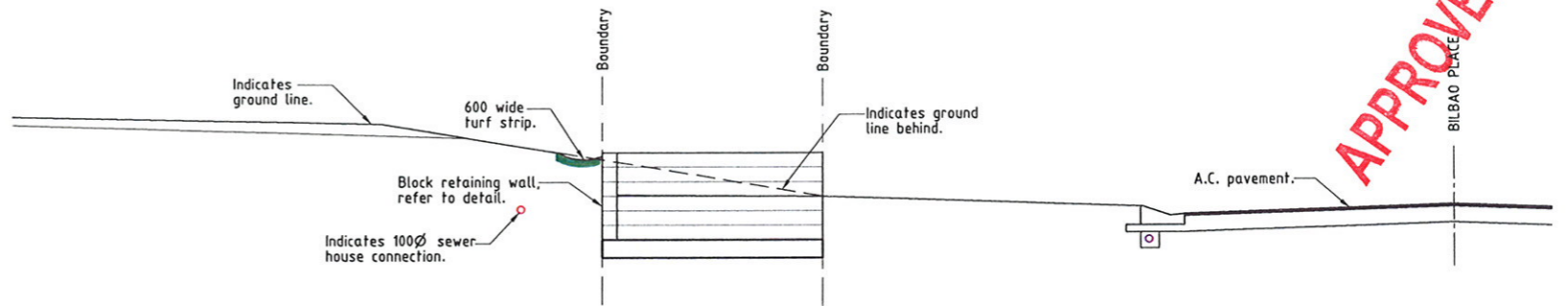
**ERGON PADMOUNT SITE PART PLAN**  
Scale 'A'



**ELEVATION A**  
Scale 'A'



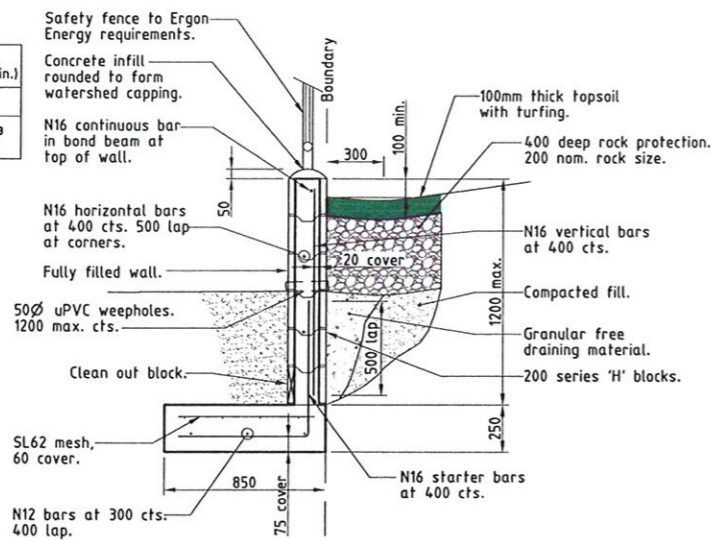
**ELEVATION B**  
Scale 'A'



**ELEVATION C**  
Scale 'A'

CONCRETE STRENGTHS				
	F'c	Slump	Aggregate Size (max.)	Cement Content (min.)
Foundation	25 MPa	75	20mm	-
Blockwork/ Core Filling	17.5 MPa	150	10mm	300kg/m <sup>3</sup>

**NOTE:**  
Retaining wall starter bars **MUST** be located correctly relative to the inside face of the wall. Provide star pickets & wire ties to ensure the footing cage does not move during the concrete pour. 'H' blocks are to be used in walls.



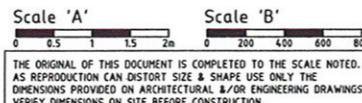
**RETAINING WALL (RW)**  
Scale 'B'

**AS CONSTRUCTED**

I John James Rowlands of ROWLANDS SURVEYS Pty. Ltd. hereby certify that this drawing accurately describes and records the nature and the location of the works depicted hereon as they have been constructed for the purposes of the development.

*John James Rowlands* Date: 22.12.10  
John James Rowlands  
Director/Registered Surveyor

LEVEL DATUM A.H.D.  
Horizontal Datum GDA' 94 Zone 55  
Refer P.M. 138403 RL. 8.545  
Bolt & washer in manhole top.  
LYNWOOD AVENUE



"\*" - Indicates As Constructed information.

All work carried out in accordance with the former THURINGOWA CITY COUNCIL standard details.

**NORTHERN CONSULTING** engineers  
Civil & Structural Engineers  
50 Punari Street, Currajong 4812  
Phone: 07 4725 5550 Fax: 07 4725 5850  
Email: mail@nceng.com.au  
Milan Member & Associates Pty. Ltd.  
ACN 100 817 956

**APPROVED**

TOWNSVILLE CITY COUNCIL  
REC'D 14 JAN 2011  
TOWN PLANNING

**REAL PROPERTY DESCRIPTION**

Lots 501 & 502 on SP 162413  
Parish of BOHLE  
County of ELPHINSTONE  
Bilbao Place - Bushland Beach

In Association with:-

**ROWLANDS SURVEYS PTY LTD**  
22 GORDEN STREET  
GARbutt. 4814  
Ph. (07)47755077

**SUNLAND GROUP**

D	AMENDED TO AS CONSTRUCTED.	21/12/2010
C	ISSUED FOR CONSTRUCTION.	30/03/2010
B	BILBAO PLACE DESIGN AMENDED & BENCHING TO ALLOTMENTS ADDED	24/03/2010
A	ISSUED FOR CONSTRUCTION.	17/04/2009
Issue	Description	Date
Drawn JHS Date 17/04/2009	In Association with <b>SUNLAND GROUP LIMITED</b>	
Checked [Signature] Approved [Signature]	<b>STAGE 85, 26 TRADITIONAL RESIDENTIAL LOT SUBDIVISION BILBAO PLACE BUSHLAND BEACH</b>	
COPYRIGHT ©		
PADMOUNT SITE CONSTRUCTION DETAILS		
Drawing Number	Issue	
<b>SUN85/16</b>	<b>D</b>	