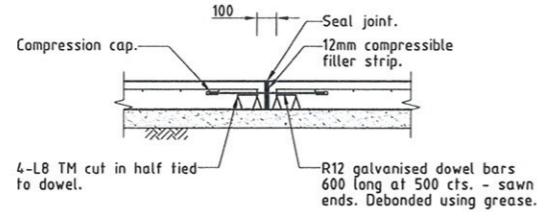
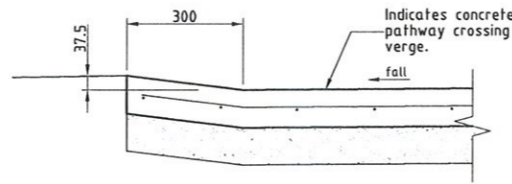


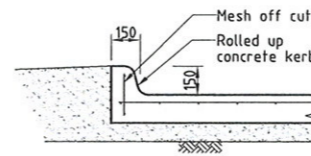
TRANSVERSE SUBSOIL DRAINAGE
Scale 'C'



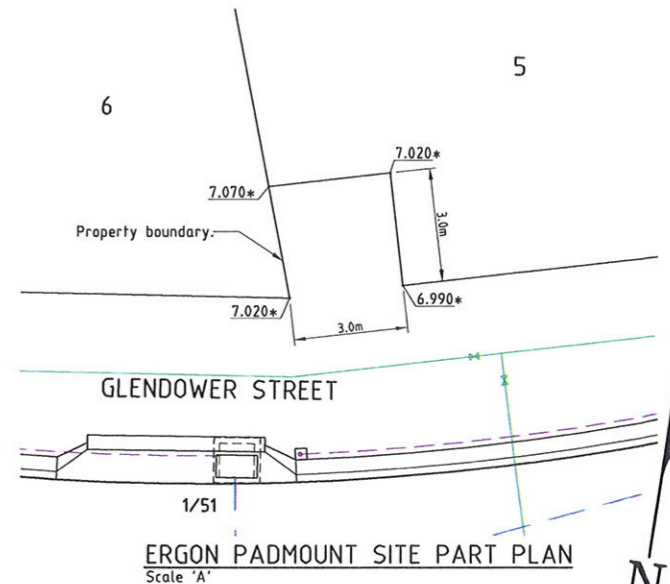
EXPANSION JOINT (EJ)
Scale 'B'



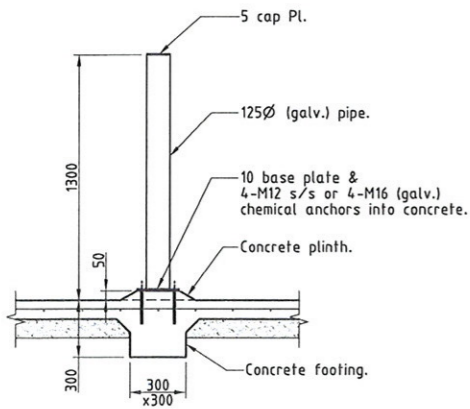
SLAB EDGE DEPRESSION
Scale 'C'



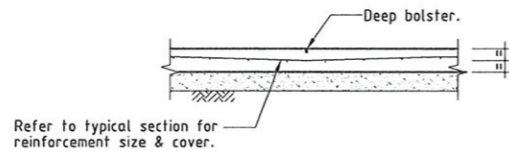
ROLLED UP KERB
Scale 'B'



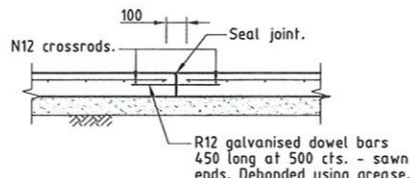
ERGON PADMOUNT SITE PART PLAN
Scale 'A'



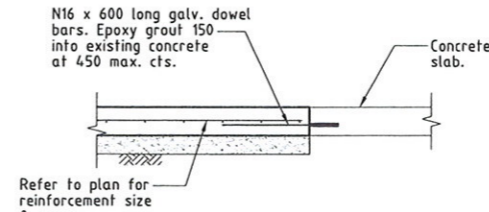
BOLLARD DETAIL
Scale 'B'



BOLSTERED JOINT (BJ)
Scale 'B'

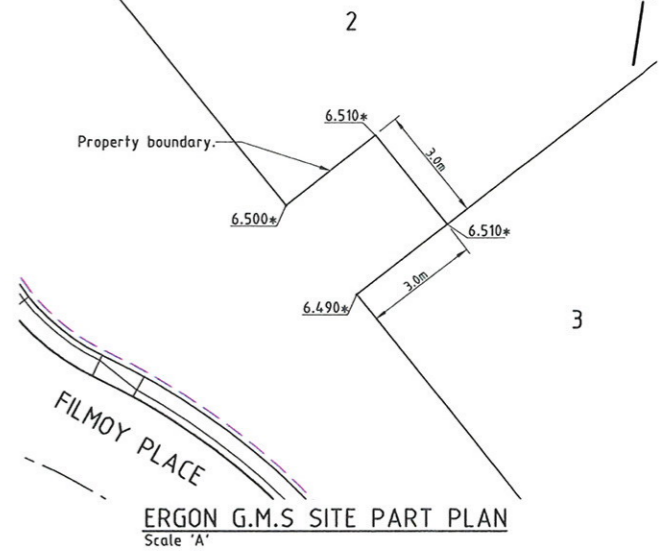


SLAB JOINT (SJ)
Scale 'B'

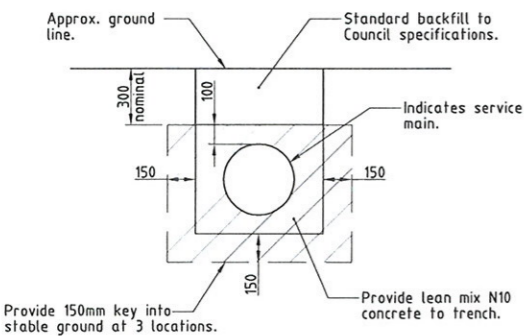


DOWEL JOINT (DX)
Scale 'B'

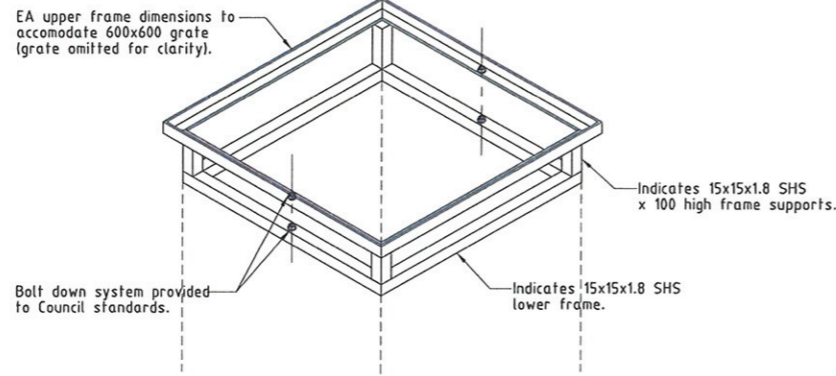
APPROVED FIBRECRETE ALTERNATIVE:
NOVAMESH HPP - Rate 2 bags/m³
N25 concrete strength with 20mm aggregate
FIBRECRETE ALTERNATIVES MUST BE AN APPROVED REINFORCEMENT REPLACEMENT SYSTEM.



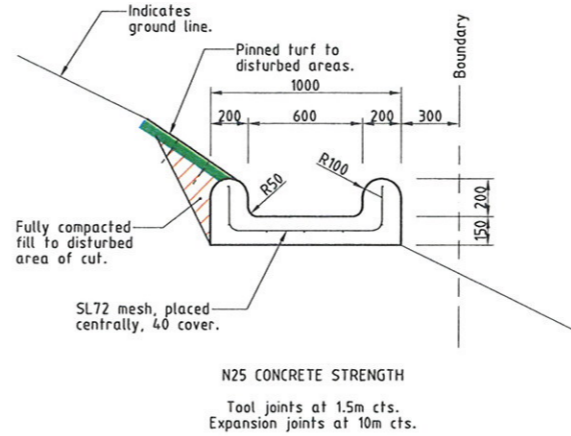
ERGON G.M.S SITE PART PLAN
Scale 'A'



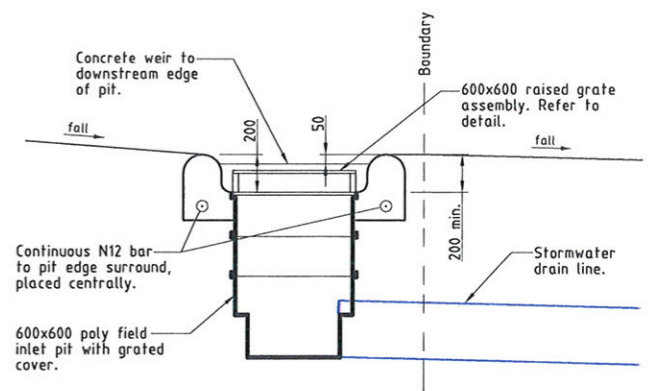
CONCRETE ENCASEMENT TO PIPE
Scale 'B'



POLY PIT RAISED GRATE ASSEMBLY
Scale 'C'



CONCRETE CUT OFF DRAIN (TYPICAL)
Scale 'B'



600x600 POLY FIELD INLET PIT (TYPICAL)
Scale 'B'

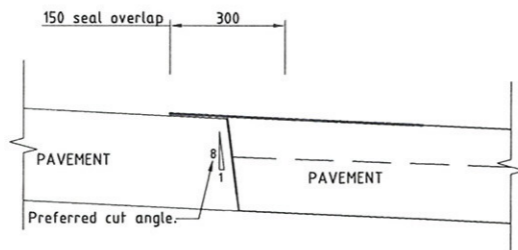
AS CONSTRUCTED

I Laurence John Nolan of ROWLANDS SURVEYS Pty. Ltd. hereby certify that this drawing accurately describes and records the nature and the location of the works depicted hereon as they have been constructed for the purposes of the development.

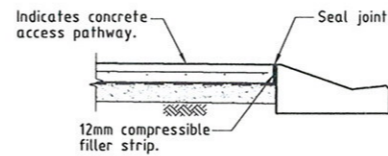
Laurence John Nolan
Director/Registered Surveyor

Date: 7/9/11

APPROVED AS CONSTRUCTED



PAVEMENT TRIMMING DETAIL
N.T.S.



ISOLATION JOINT (IJ)
Scale 'B'

* - Indicates as constructed information.
All work is carried out in accordance with LOCAL AUTHORITY standard details.

Issue	Description	Date
E	AMENDED TO AS CONSTRUCTED.	07/09/2011
D	MODIFICATION TO RETAINING WALLS AND SERVICES.	23/06/2011
C	SERVICES & LOT LAYOUT DESIGN AMENDED - ISSUED FOR CONSTRUCTION.	30/03/2011
B	SERVICES & LOT LAYOUT DESIGN AMENDED - ISSUED FOR APPROVAL.	24/03/2011
A	ISSUED FOR CONSTRUCTION.	27/10/2010
P2	PRELIMINARY - NOT FOR CONSTRUCTION - ISSUED FOR OPERATION WORKS APPROVAL.	17/08/2010
P1	PRELIMINARY - NOT FOR CONSTRUCTION - ISSUED FOR CLIENT APPROVAL.	06/08/2010

TOWNSVILLE CITY COUNCIL
REC'D - 8 SEP 2011
TOWN PLANNING

SUNLAND GROUP
REAL PROPERTY DESCRIPTION
Lot 902 on SP 218628, Lot 901 on SP 226447 & Lot 4 on RP 743005
Parish of BOHLE
County of ELPHINSTONE
Glendower Street - Bushland Beach

In Association with:-
ROWLANDS SURVEYS PTY LTD
22 GORDEN STREET
GARbutt. 4814
Ph. (07)47755077

LEVEL DATUM A.H.D.
Horizontal Datum GDA' 94 Zone 55
Refer P.M. 174.438 RL. 4.820
Bolt & washer in kerb.
Cnr HILLOCK CR. & GLENDOWER ST.

Scale 'A' 0 1 2 3 4m
Scale 'B' 0 200 400 600 800
Scale 'C' 0 100 200 300 400

THE ORIGINAL OF THIS DOCUMENT IS COMPLETED TO THE SCALE NOTED. AS REPRODUCTION CAN DISTORT SIZE & SHAPE USE ONLY THE DIMENSIONS PROVIDED ON ARCHITECTURAL &/OR ENGINEERING DRAWINGS. VERIFY DIMENSIONS ON SITE BEFORE CONSTRUCTION.

NORTHERN CONSULTING engineers
Civil & Structural Engineers
50 Punari Street, Currumbong 4812
Phone: 07 4725 5550 Fax: 07 4725 5850
Email: mail@nceng.com.au
Milton Messer & Associates Pty. Ltd.
ACN 100 817 356

Drawn: JHS
Date: 06/08/2010
Checked: [Signature]
Approved: [Signature]
COPYRIGHT ©

In Association With:
SUNLAND GROUP LIMITED
STAGE 1, 31 TRADITIONAL RESIDENTIAL LOT SUBDIVISION GLENDOWER STREET BUSHLAND BEACH

CONSTRUCTION DETAILS
Drawing Number: SUNJ0001/15
Issue: E