

- LEGEND**
- GENERAL:-**
- RP boundary.
 - Top of batter.
 - Toe of batter.
 - Change of grade.
 - Stormwater drain line.
 - Subsoil drainage.
 - Water supply main.
 - Irrigation conduit.
 - Stormwater drain line.
 - Subsoil drainage.
 - Sewer main.
 - Sewer manhole.
 - Water main.
 - Underground electrical supply.
 - National Broadband Network.

- WATER RETICULATION:-**
- FH Fire Hydrant.
 - SV Stop Valve.

- NOTES:**
- AS CONSTRUCTED WATER RETICULATION:**
- All water supply fixtures (FH, SV etc.) have been installed in accordance with Townsville City Council standards, ie. adjacent to boundary intersection, U.N.O.
 - All D.I.C.L. water mains & fittings are K9 class PN35.

LAYOUT PLAN
Scale 'A'

AS CONSTRUCTED

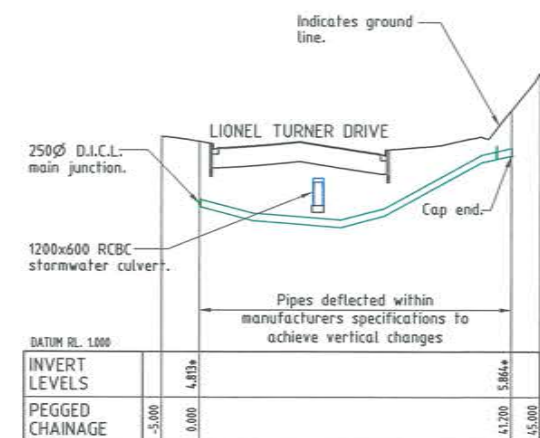
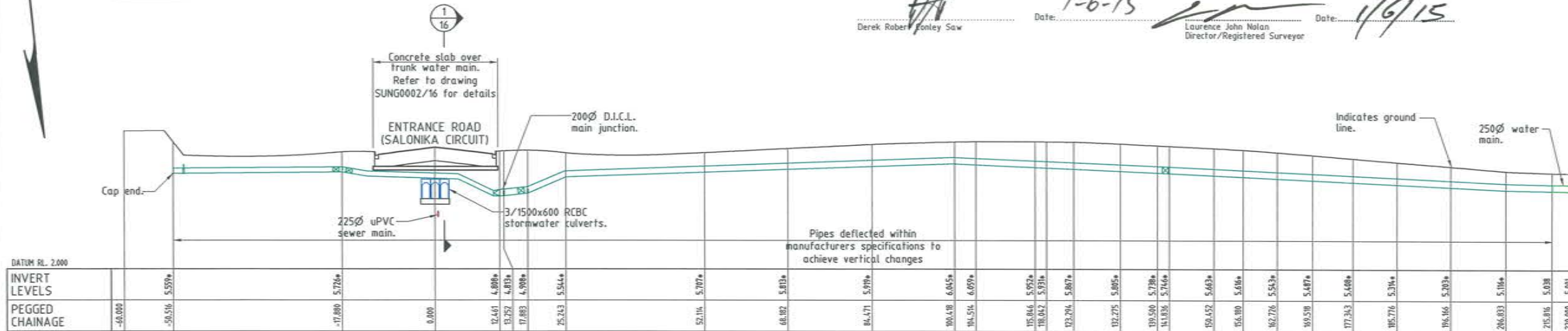
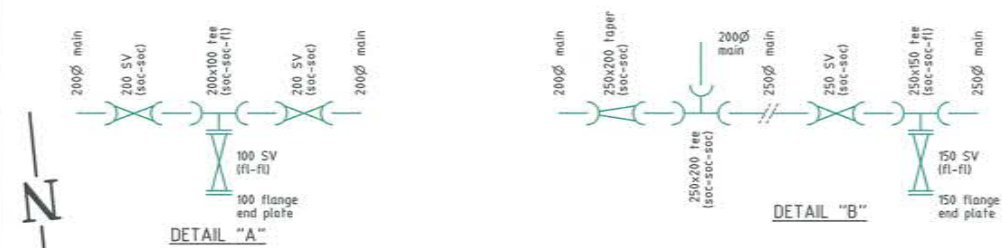
Northern Consulting Engineers hereby certify that the works detailed on this drawing have been constructed to the dimensions and levels detailed.

Derek Robert Conley Saw
Date: 1-6-15

AS CONSTRUCTED

Rowlands Surveys Pty Ltd (ACN 010 025 260) hereby certify that the works detailed on this drawing, denoted *, have been constructed to the dimensions and levels shown.

Laurence John Nolan
Director/Registered Surveyor
Date: 1/6/15



ACCEPTED AS CONSTRUCTED

LONGITUDINAL SECTIONS

Scale 'A' - Horizontal
Scale 'B' - Vertical



REAL PROPERTY DESCRIPTION

Lot 902 on SP256043
Parish of BOHLE
County of ELPHINSTONE
Lionel Turner Drive - Bushland Beach



ROWLANDS SURVEYS PTY LTD
22 GORDEN STREET
GARBUTT, 4814
Ph. (07)47755077

LEVEL DATUM A.H.D.
Horizontal Datum GDA '94 Zone 55
Refer P.M. 1144-38 RL. 4.820
Bolt & washer in kerb.
Cor HILLOCK CR. & GLENDOWER ST.

BASE SURVEY
Rowlands Surveys (43074/02)
TRUNCATED COORDINATES
E 0.000, N 0.000
EQUIVALENT TO
E 4.60000, N 7800000



THE ORIGINAL OF THIS DOCUMENT IS COMPLETED TO THE SCALE NOTED.
AS REPRODUCTION CAN DISTORT SIZE & SHAPE USE ONLY THE DIMENSIONS PROVIDED ON ARCHITECTURAL &/OR ENGINEERING DRAWINGS.
VERIFY DIMENSIONS ON SITE BEFORE CONSTRUCTION.

All work has been carried out in accordance with LOCAL AUTHORITIES standard details.



Civil & Structural Engineers
50 Punari Street, Currajong 4812
Phone: (07) 4725 5550 Fax: (07) 4725 5850
Email: mail@nceng.com.au
Milton Messer & Associates Pty. Ltd.
ACN 100 817 356

Issue	Description	Date
B	AMENDED TO AS CONSTRUCTED.	29/05/2015
A	ISSUED FOR CONSTRUCTION - RESPONSE TO COUNCIL INFORMATION REQUEST.	02/12/2014
P1	PRELIMINARY - NOT FOR CONSTRUCTION - ISSUED FOR OPERATIONAL WORKS APPROVAL ONLY.	05/09/2014

Drawn	In Association With	Drawing Number	Issue
HAB	SUNLAND GROUP LIMITED		
Date	ROAD EXTENSION LIONEL TURNER DRIVE BUSHLAND BEACH		
05/09/2014			
Checked			
HAB			
Approved			
COPYRIGHT ©			